

39.

55.

11.

82.

60.

11.

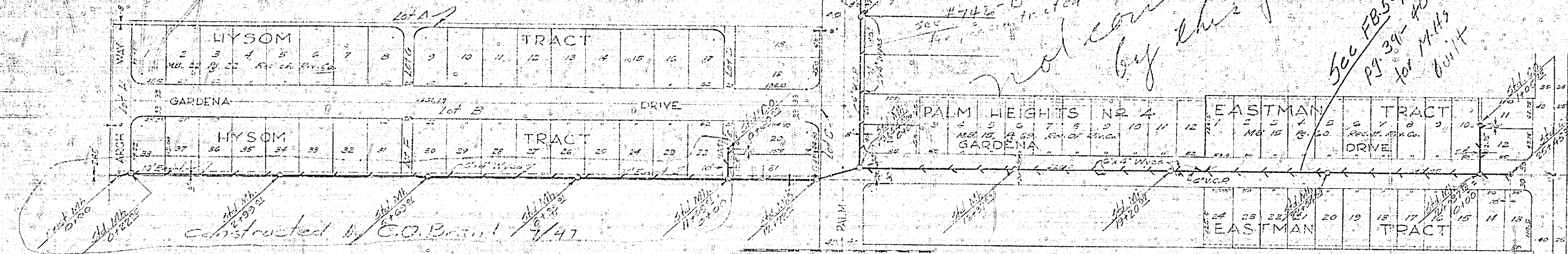
55.

→ TENTATIVE ←
 Plan & Profile of
 SANITARY SEWER
 To serve a part of the
 HYSOM TRACT & OTHER STREETS

Scales: Vert. 1" = 5'
 Hor. 1" = 100'

June 1947

APPROVED: _____
 City Engineer



- 510.27 - 6" V.C. Pipe
- 12 - 6" V.C. Pipe
- 12 - Std. Manholes
- 4 - Std. Manholes

742-A

39.
55.
11.
82.
60.
11.
55.
11.
55.