

SS.

11.

11.

82.

82.

11.

11.

SS.

From Curb to 1st St

FOURTEENTH ST

THIRTEENTH ST

TWELFTH ST

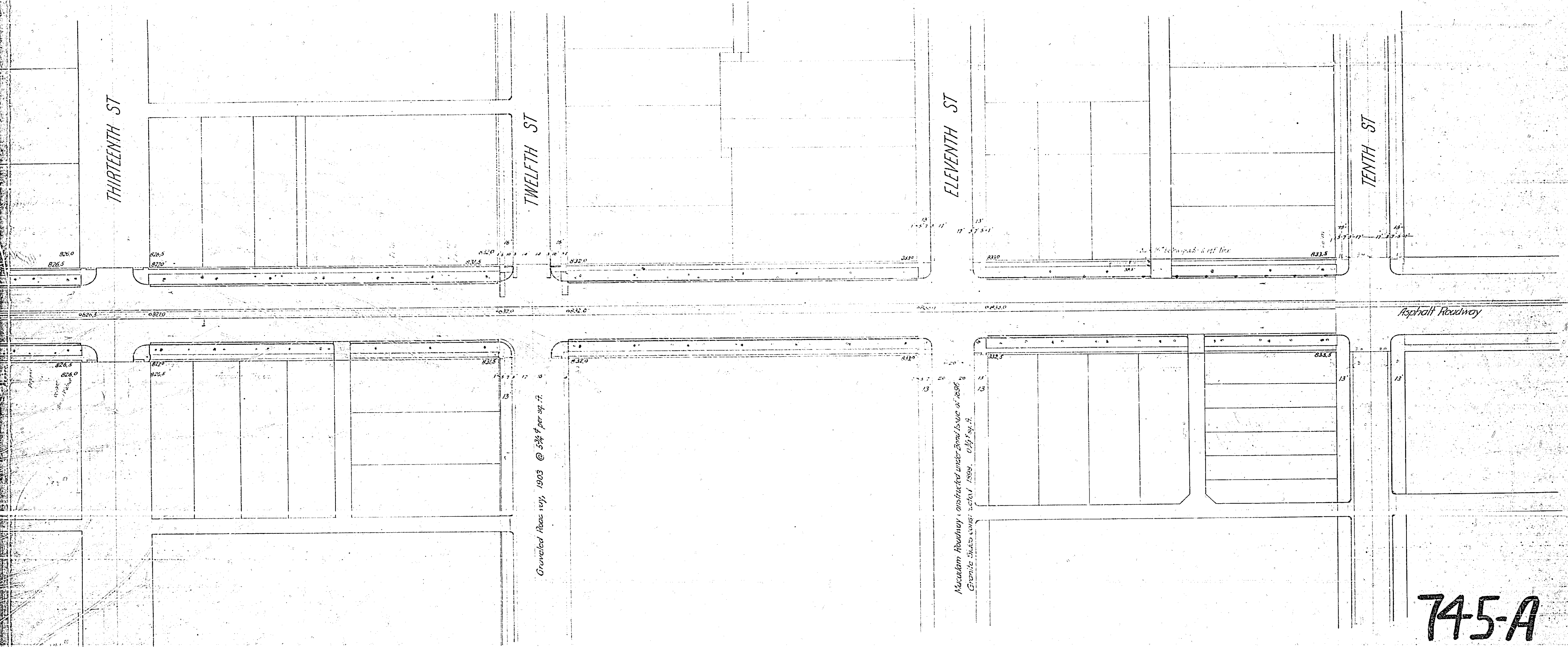
Gravel Roadway, 1903 @ 5 1/2¢ per sq. ft.

Shrubbery
B. or H.

Palm Trees
Care: P. R. B.

Palm Trees

From 1903 to 1905, 52' from curb to 1st St. 1905



Gravelled Road 1903, 1903 @ 52' 8" per sq. ft.

Macadam Roadway, constructed under Bond Issue of 1896
Gravel Subsoil covered 1899, 0.34 sq. ft.