

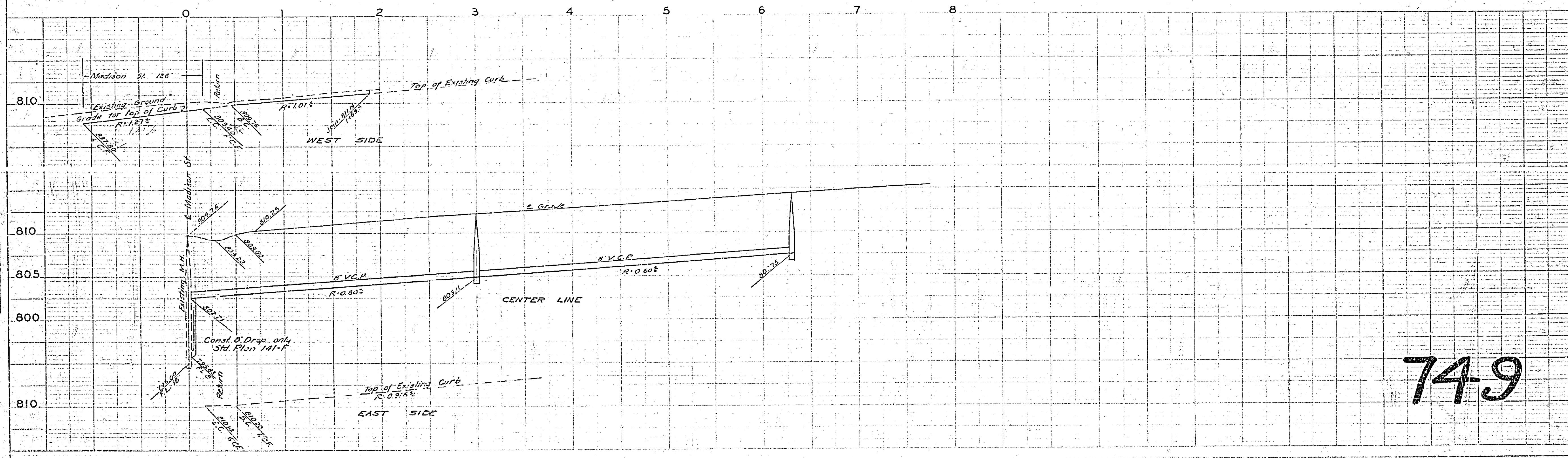
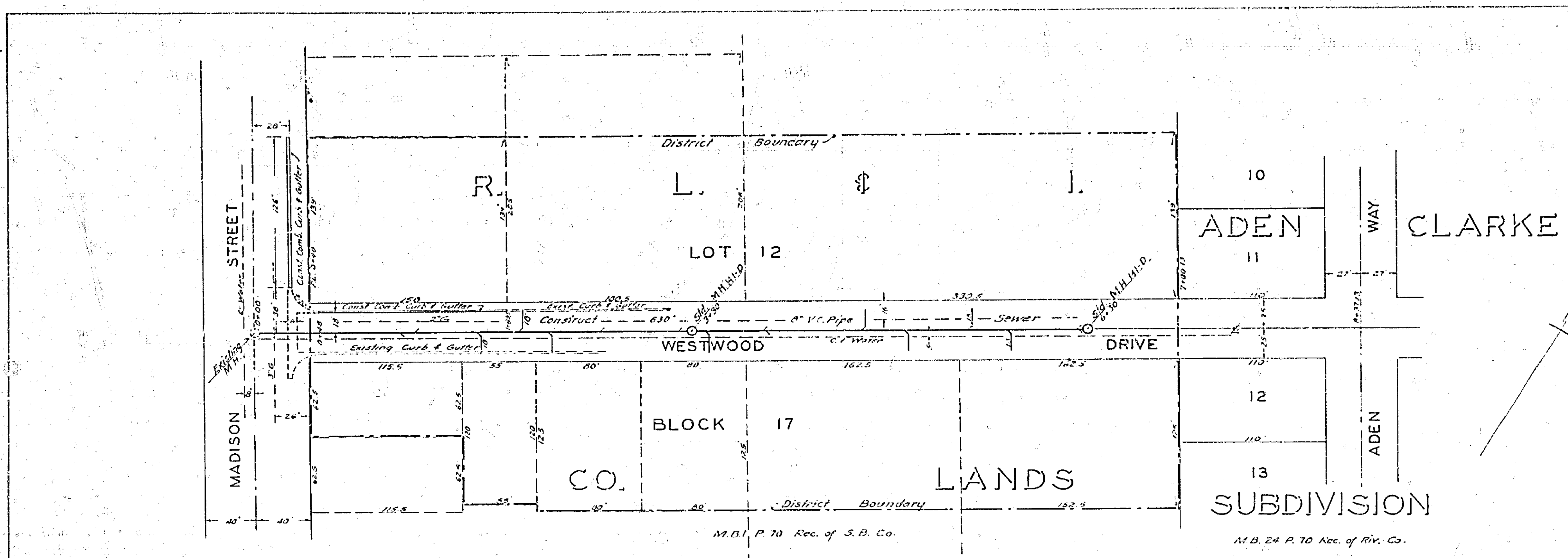
PLAN AND PROFILE
 NO. 749
 FOR THE IMPROVEMENT OF
WESTWOOD DRIVE
 BETWEEN MADISON STREET AND ADEN WAY
 BY THE CONSTRUCTION OF A SANITARY SEWER
 AND CONCRETE CURBS AND GUTTERS—IN PART
 IN THE CITY OF RIVERSIDE, CALIFORNIA

F.B. 511/70
 SCALES: HORIZ. 1" = 50'
 VERT. 1" = 5'

APPROVED *M. H. Swaine*
 MET. CIVIL ENG. REG. NO. 3001
 CITY ENGINEER

THIS PLAN APPROVED AND ADOPTED
 BY THE MAYOR AND COUNCIL OF THE
 CITY OF RIVERSIDE, STATE OF CALIFORNIA
 ON THIS 22ND DAY OF FEBRUARY 1952

Swaine
 CITY CLERK



74-9