

# DIAGRAM

## EXHIBITING WESTWOOD DRIVE IMPROVEMENT DISTRICT

IN THE CITY OF RIVERSIDE IN WHICH WORK HAS BEEN DONE UNDER MY OFFICIAL CONTRACT AS SUPERINTENDENT OF STREETS OF SAID CITY WITH C.O. BRAND DATED FEBRUARY 9, 1953

FOR THE CONSTRUCTION OF COMBINATION CURB & GUTTER, SANITARY SEWER, MANHOLES, WYE BRANCHES, HOUSE CONNECTIONS, & DROP ONLY INTO EXISTING MANHOLE. AS IS MORE PARTICULARLY DESCRIBED IN SAID CONTRACT TO WHICH REFERENCE IS HEREBY MADE FOR FURTHER PARTICULARS; SAID DIAGRAM ALSO SHOWS THE RELATIVE LOCATION OF EACH LOT, PORTION OF LOT, PIECE OR PARCEL OF LAND ASSESSED FOR THE WORK DONE NUMBERED IN CIRCLES TO CORRESPOND TO THE RED INK NUMBERS IN THE ASSESSMENT

HEREIN FIGURES NEXT TO PROPERTY LINES SHOW LENGTH OF SAID LINES IN FEET. THE MARK (') MEANS FEET. PROPERTY LINES THAT DIFFER FROM THE RECORDED SUBDIVISIONS ARE SHOWN BY BROKEN LINES. THE DISTRICT BENEFITED IS BOUNDED BY A HEAVY DASHED LINE.


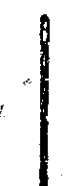



PROPERTY COVERED BY THIS ASSESSMENT IS SHOWN ON THE FOLLOWING RECORDED MAPS:

R.L. & I. CO. LANDS M.B. 1, PG. 70, REC. RIV. CO.

I HEREBY CERTIFY THAT THIS ASSESSMENT DIAGRAM WAS APPROVED BY THE CITY COUNCIL OF THE CITY OF RIVERSIDE AT A MEETING THEREOF HELD ON THE \_\_\_\_\_ DAY OF \_\_\_\_\_ 19\_\_\_\_

\_\_\_\_\_  
CITY CLERK OF THE CITY OF RIVERSIDE.

HEREIN THE LEGEND OF THE DIFFERENT KINDS OF WORK PERFORMED IS SHOWN AS FOLLOWS:

- COMBINATION CURB & GUTTER 
- SANITARY SEWER 
- MANHOLE 
- WYE BRANCH 
- HOUSE CONNECTION 

SUPERINTENDENT OF STREETS OF THE CITY OF RIVERSIDE THE FOLLOWING IS A STATEMENT OF AMOUNTS OF DIFFERENT KINDS OF WORK DONE BY C.O. BRAND UNDER

CONTRACT DATED FEBRUARY 9, 1953 PURSUANT TO RESOLUTION OF INTENTION NO. 5474 ADOPTED BY THE CITY COUNCIL OF THE CITY OF RIVERSIDE ON THE 28 TH DAY OF OCTOBER 1952

COMBINATION CURB & GUTTER	2675 LIN. FT.
8" VITRIFIED CLAY PIPE SEWER	630 LIN. FT.
STD. MANHOLES	2
8" x 4" WYE BRANCHES	17
4" HOUSE CONNECTION	252 LIN. FT.
STD. 8" DROP INTO EXISTING MANHOLE	1

AT SAID CITY OF RIVERSIDE THIS \_\_\_\_\_ DAY OF \_\_\_\_\_

\_\_\_\_\_  
SUPERINTENDENT OF STREETS OF THE CITY OF RIVERSIDE.

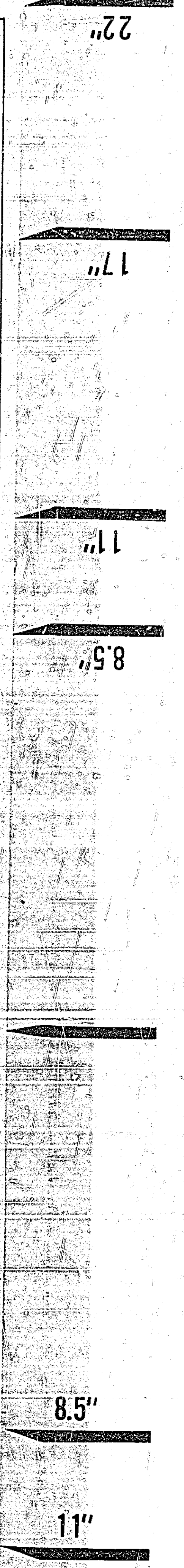
I HEREBY CERTIFY THAT THE ABOVE WORK WAS DONE IN ACCORDANCE WITH LINES AND GRADES FURNISHED BY ME AND THAT THE DIAGRAM OF THE ASSESSMENT DISTRICT FOR THE SAME IS CORRECT.

\_\_\_\_\_  
CITY ENGINEER OF THE CITY OF RIVERSIDE.

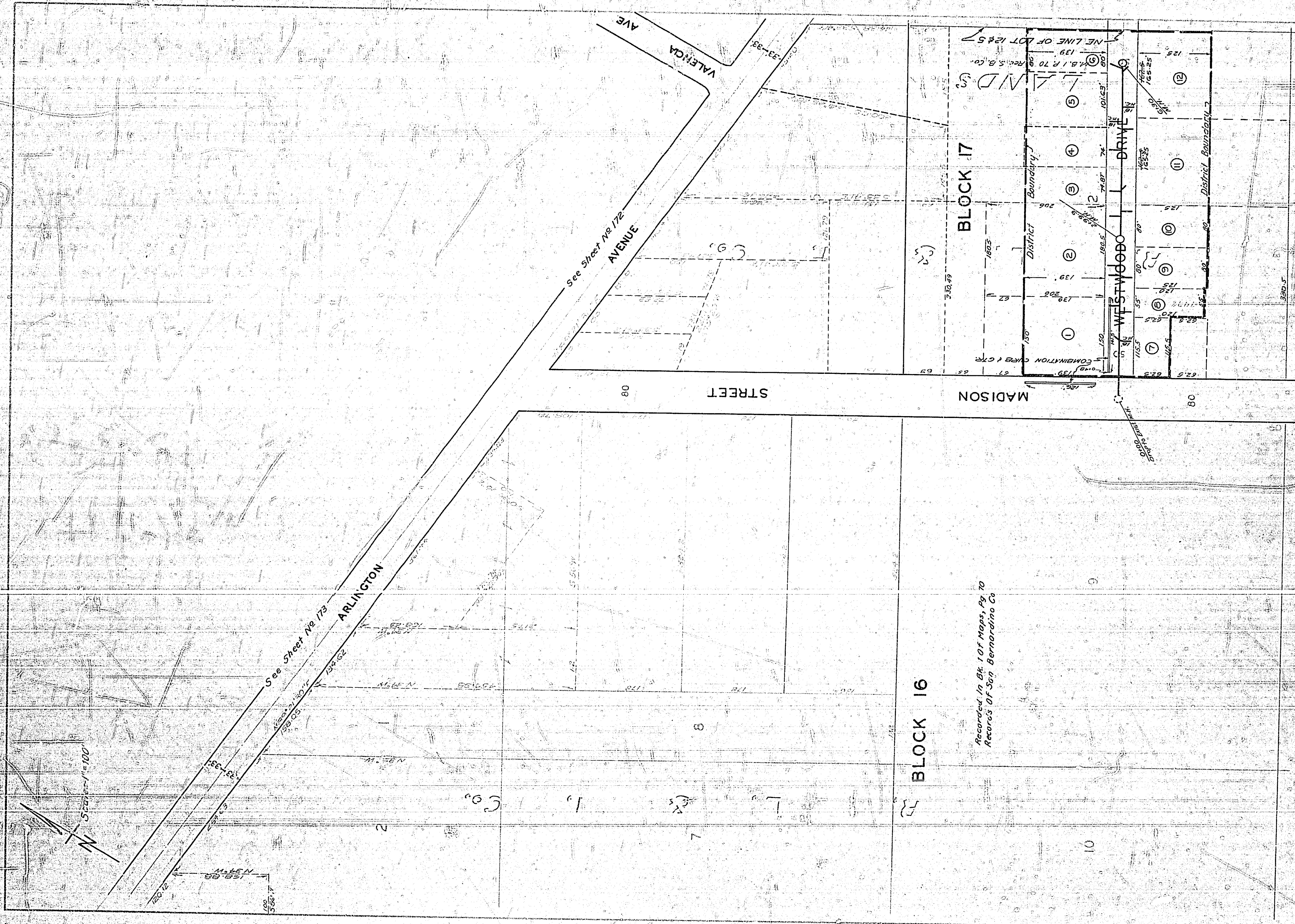
RECORDED AT \_\_\_\_\_ O'CLOCK \_\_\_\_\_ M. THIS \_\_\_\_\_ DAY OF \_\_\_\_\_ 19\_\_\_\_

\_\_\_\_\_  
SUPERINTENDENT OF STREETS OF THE CITY OF RIVERSIDE.

# 749







Recorded in Bk. 10 of Maps, Pg. 70  
 Records of San Bernardino Co

749-A