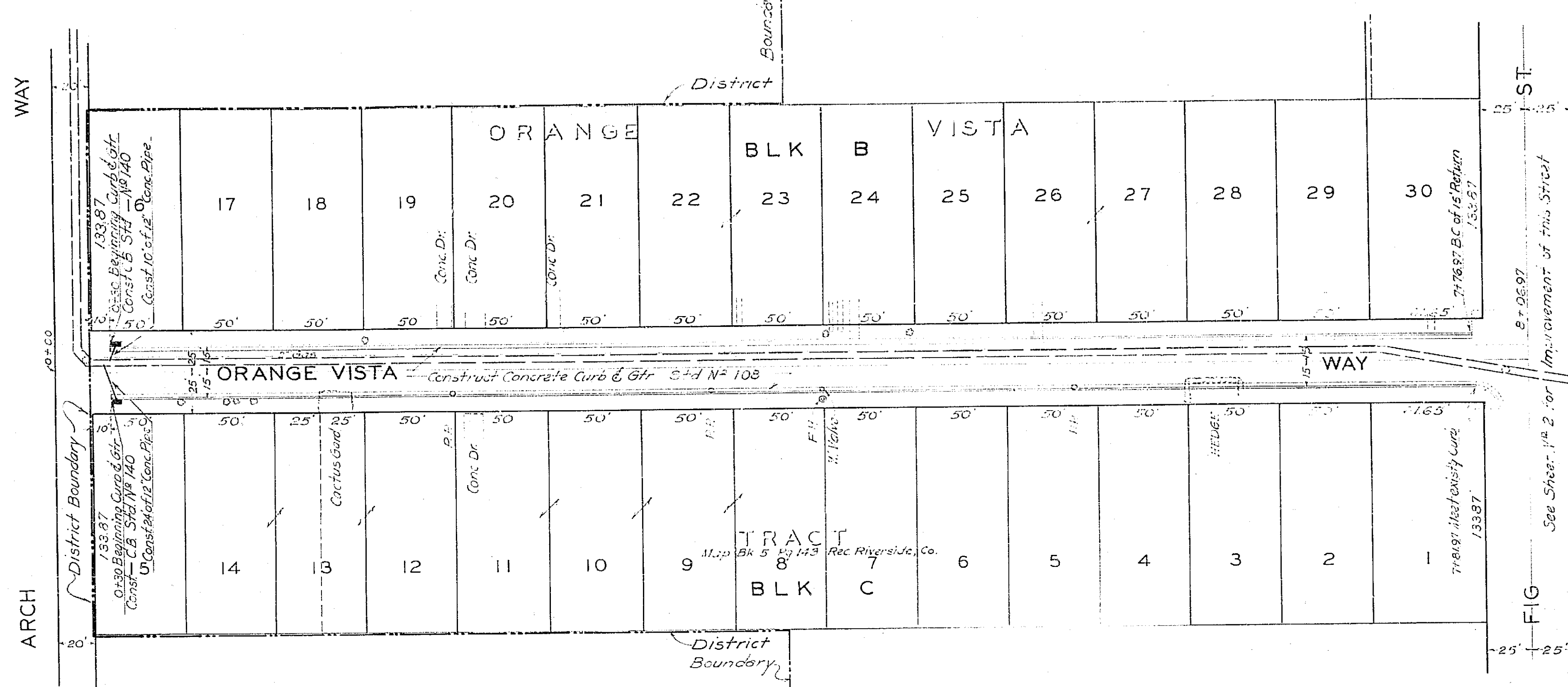
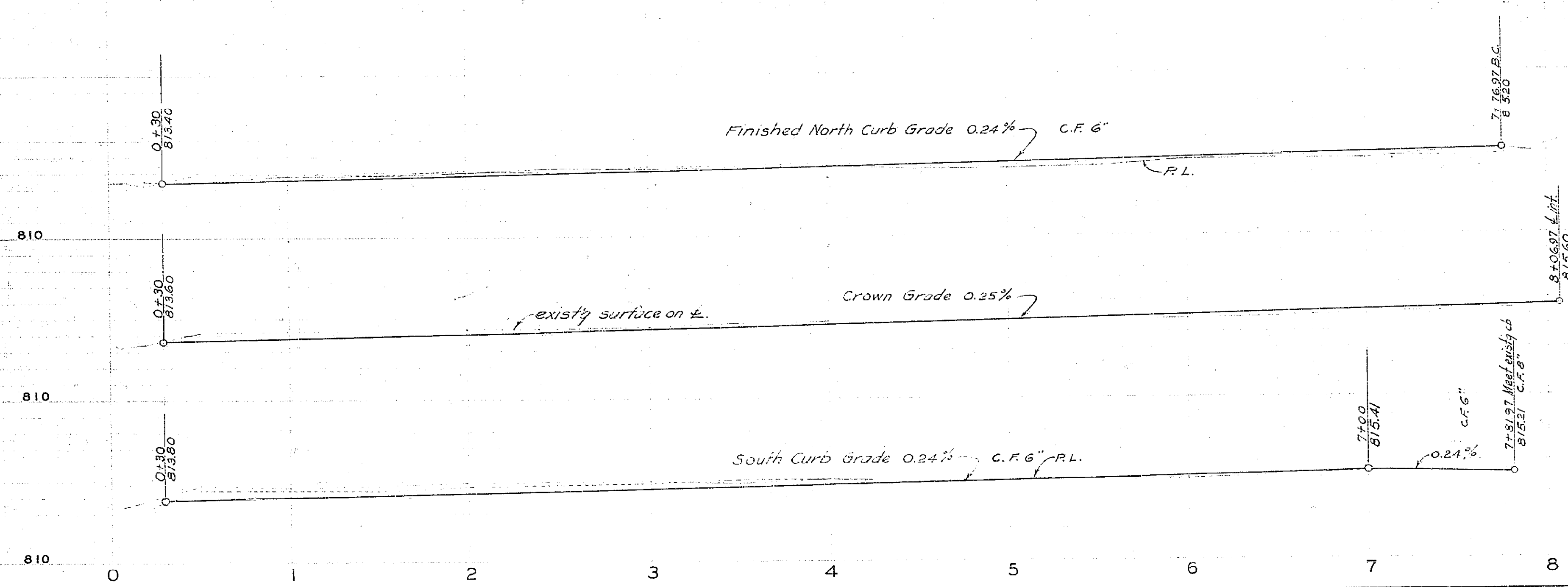


SCALE 1"=40'



PROFILE
SCALE: HOR. 1"=40'
VER. 1"=4'



760

F. B. 457

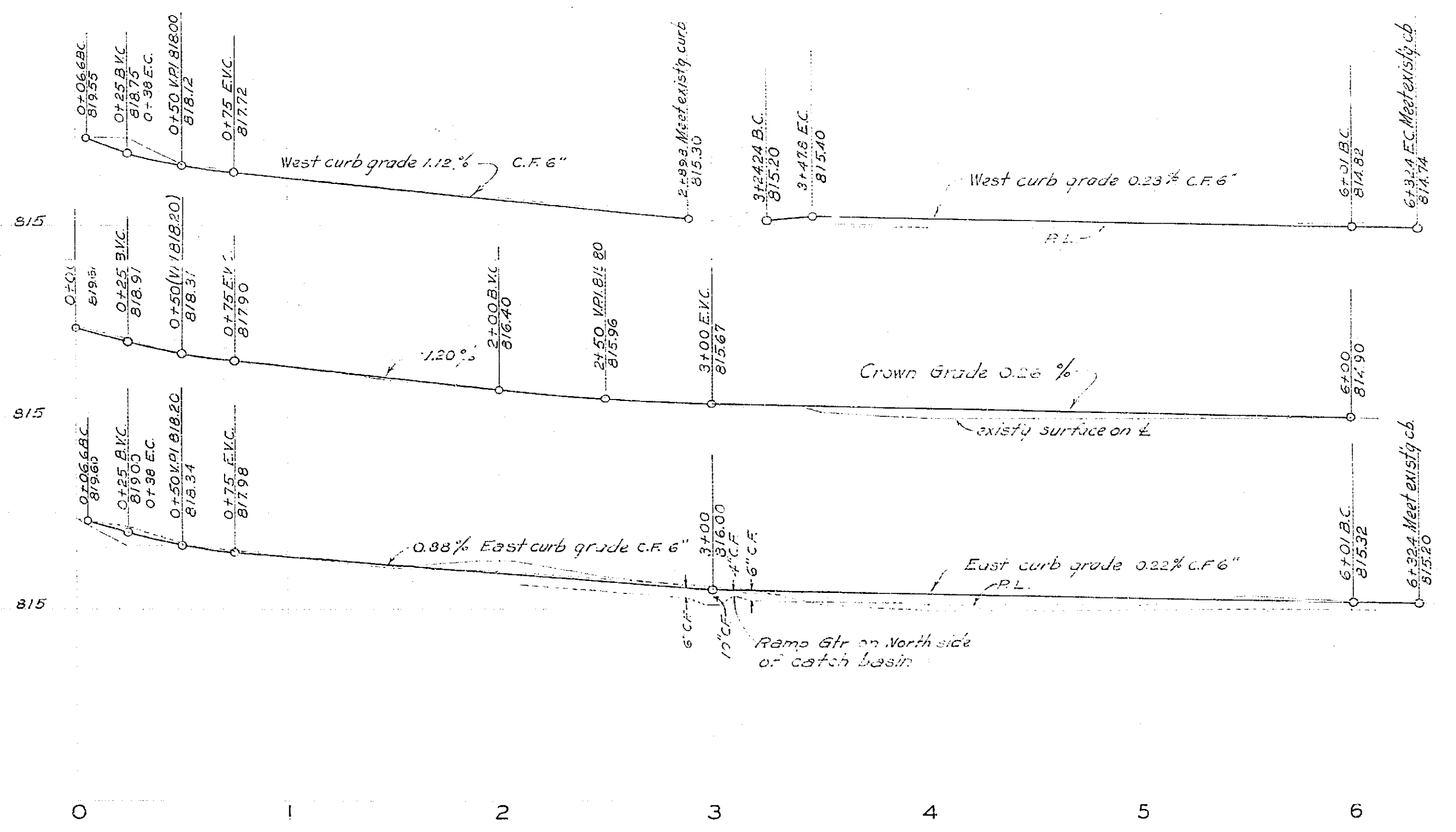
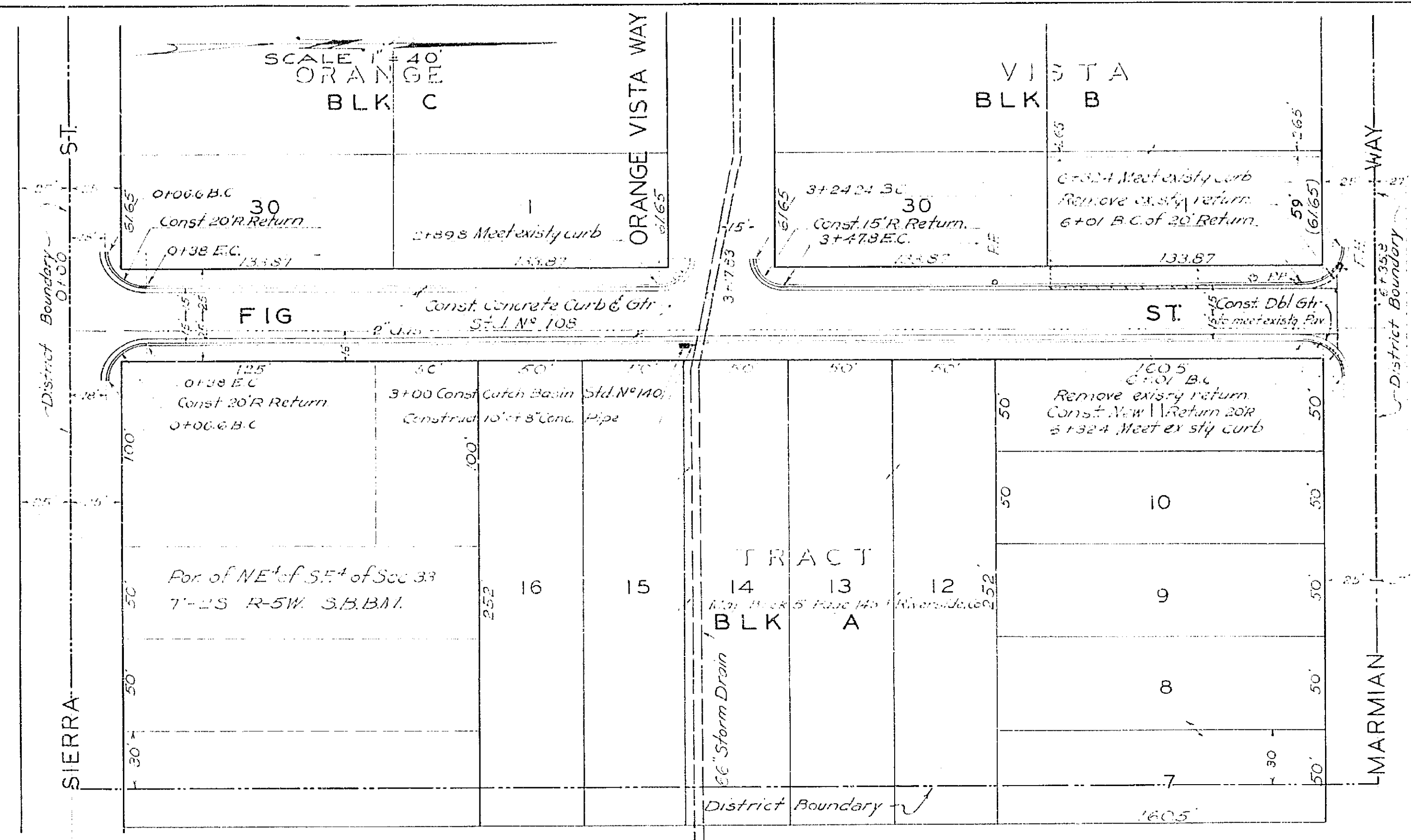
Vertical scale markings on the right edge of the sheet: .94", .72", .51", .31", .11", .98", 8.5", 11", 17", 22".

PLANS AND PROFILES
 NO 760
 FOR THE CONSTRUCTION OF CURBS AND
 GUTTERS AND PAVEMENT ON
ORANGE VISTA WAY
 BETWEEN ARCH WAY AND FIG STREET
FIG STREET
 BETWEEN SIERRA ST AND MARMIAN WAY
 RIVERSIDE, CALIFORNIA

THESE PLANS APPROVED AND ADOPTED BY
 THE MAYOR AND COUNCIL OF THE CITY OF
 RIVERSIDE, STATE OF CALIFORNIA ON
 THIS 28th DAY of June 1949

APPROVED *M. H. Irvine*
 M. H. IRVINE REG. C.E. NO. 3011
 CITY ENGINEER

W. H. White
 CITY CLERK



PROFILE
 SCALE: HOR. 1" = 40'
 VER. 1" = 4'

760