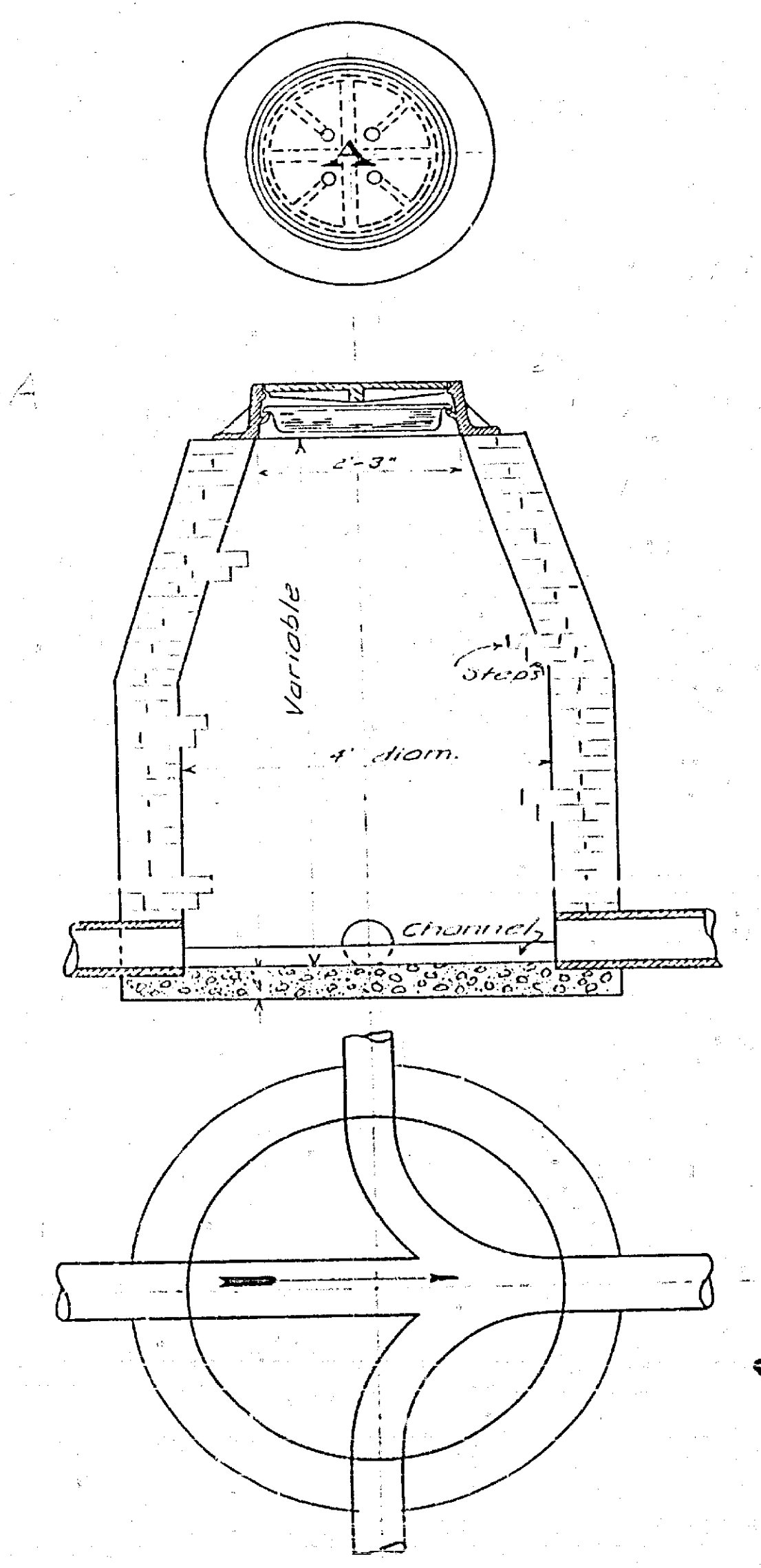
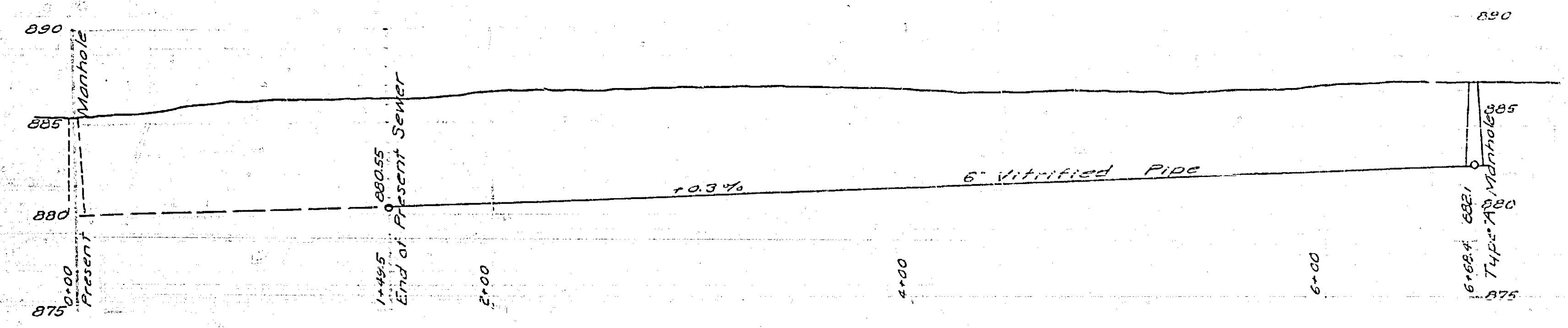
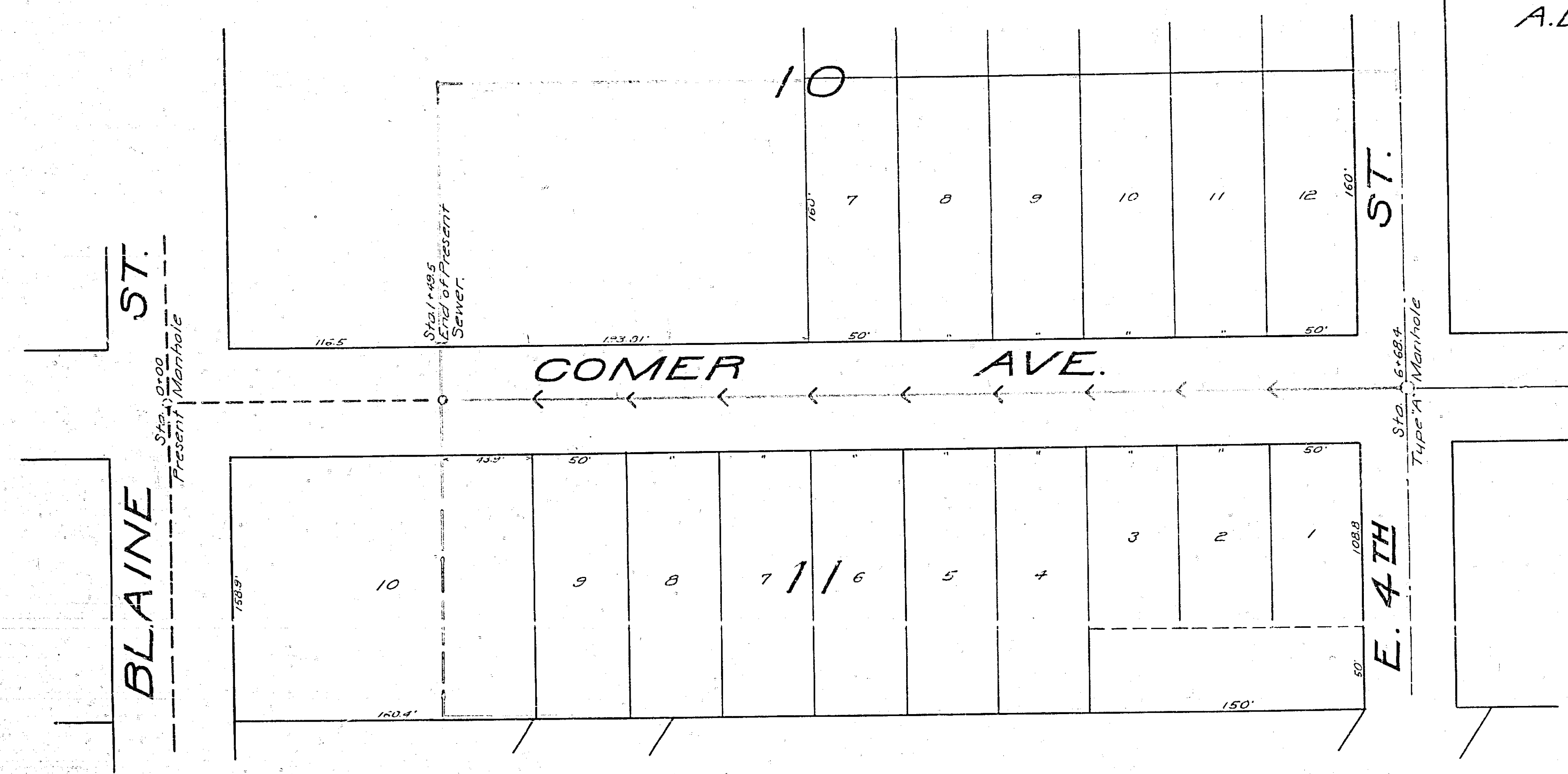


Adopted by the Mayor  
and Common Council of  
the City of Riverside this  
11<sup>th</sup> day of May 1920  
Attest \_\_\_\_\_  
City Clerk

**Legend**  
Sewer to be constructed shown thus, ————  
Constructed sewer shown by broken line thus, - - - -  
District to be assessed bounded by green line thus, ————

MAP SHOWING SEWER  
TO BE CONSTRUCTED IN  
**COMER AVE.**  
FROM PRESENT SEWER END TO E. 4<sup>TH</sup> ST.  
A. BRAUNSCHWEIGER CITY ENGINEER

SCALES, HOR. 1 IN = 60 FT. VER. 1 IN = 6 FT.



Plan of Type "A" Manhole

762