

11"

8.5"

8.5"

11"

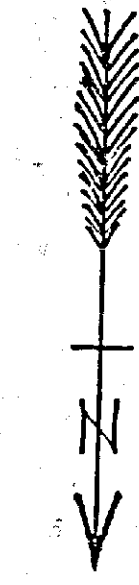
17"

MAP of PROPOSED SEWER
ON FRANKLIN AVE. & IN ALLEY of Bk. 2 KYES TRACT.

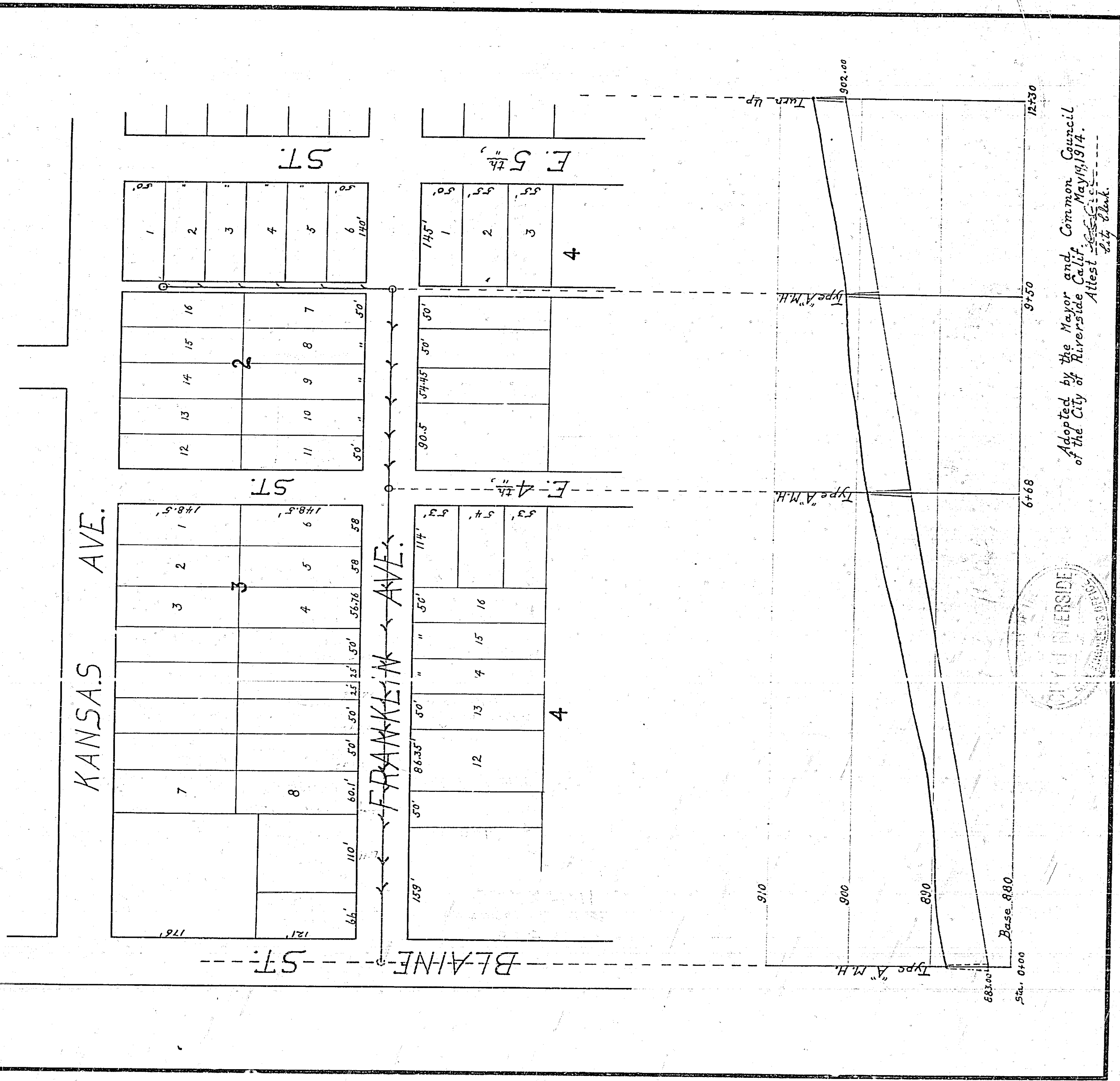
Scale: 1 in. Hor. = 100 ft.
1 in. Ver. = 10 ft.

1611

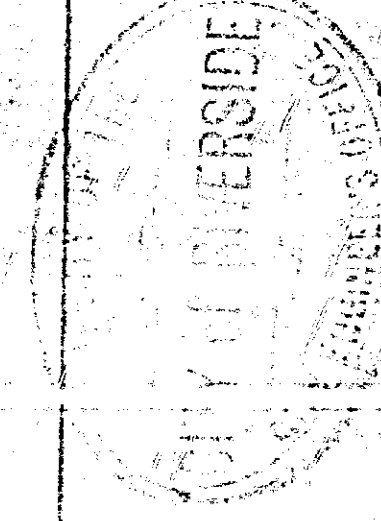
A. P. Campbell
City Engineer



Book 114 Page 30



Adopted by the Mayor and Common Council
of the City of Riverside Calif. May 19, 1914.
Attest City Clerk



763

11"

8.5"

8.5"

11"

17"

22"