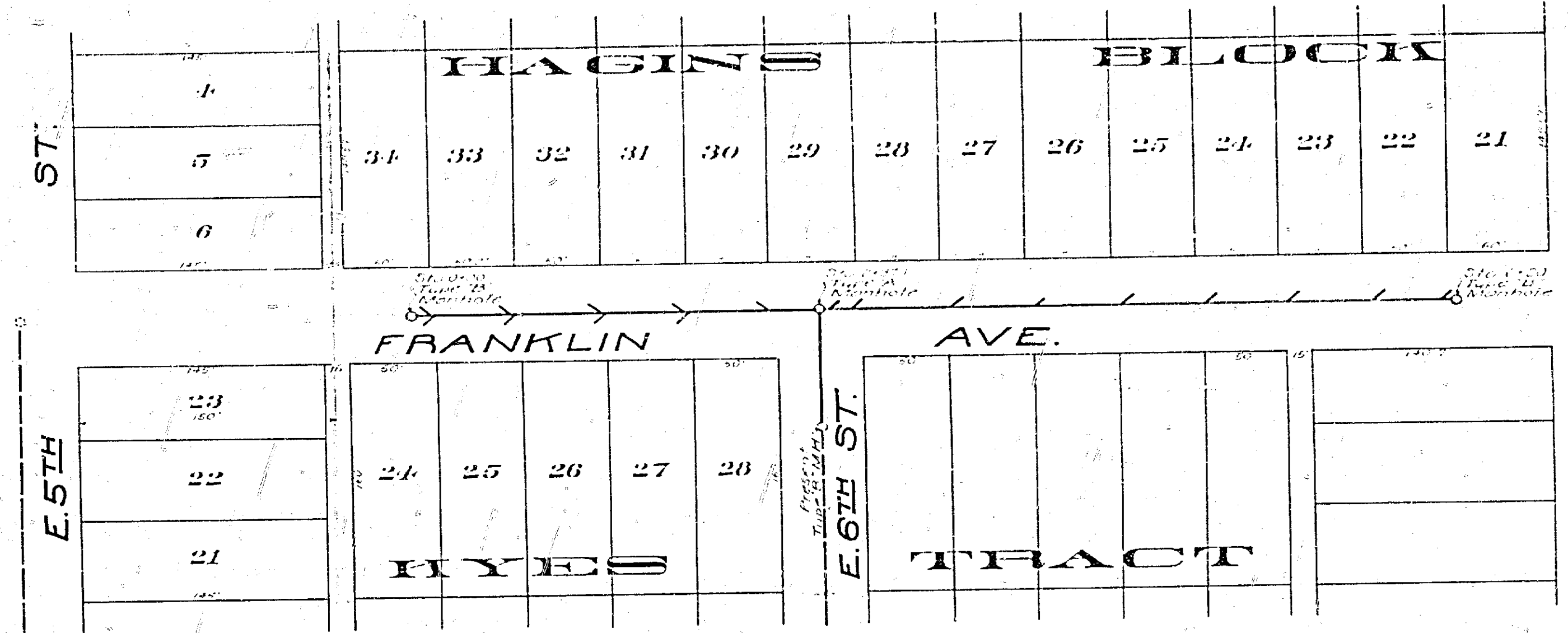
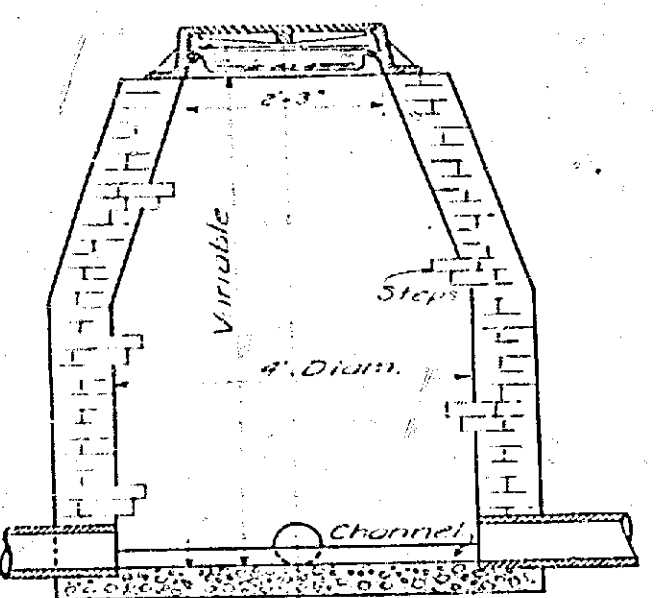
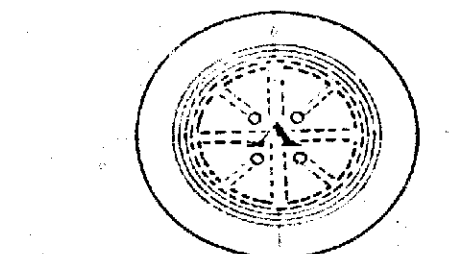
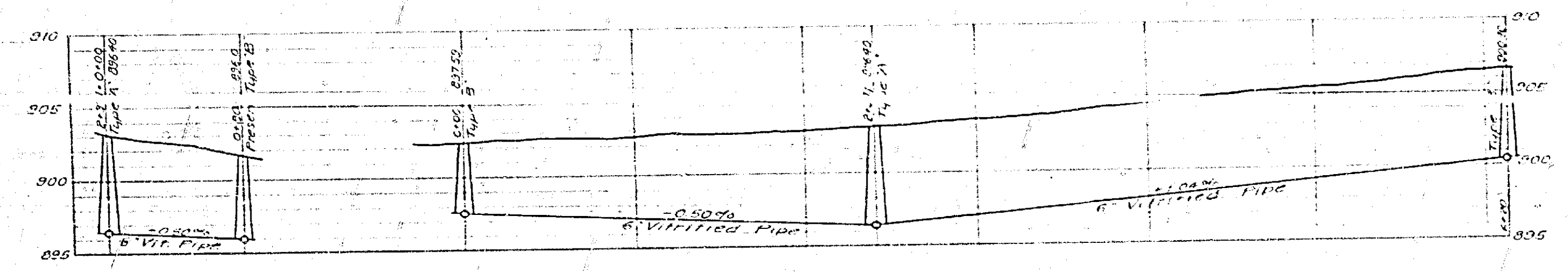


**MAP SHOWING SEWER
TO BE CONSTRUCTED IN
FRANKLIN AVE.
BETWEEN E.5TH ST. & E.7TH ST.
LEE NAFZGAR CITY ENGINEER**

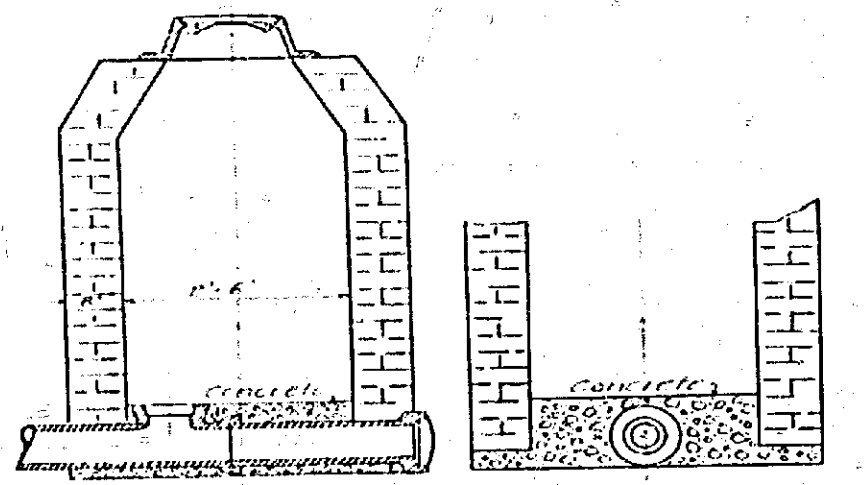
Scales; Hor. 1 in. = 60 Ft.
Ver. 1 in. = 6 Ft.



Quantities
651 - 6" Vitrified Sewer Pipe
16 - 4" 6" Y Branches
1 - Type "A" Manhole
2 - Type "B" Manhole



Plan of Type "A" Manhole



Plan of Type "B" Manhole

Adopted by the Mayor and Common Council of the City of Riverside this 23rd day of May, 1920.
Attest _____ City Clerk

Legend
Sewer to be constructed shown thus,
Constructed sewer shown by broken line, thus,
District to be assessed, bounded by a green line, thus,

763-A

MAP No 763