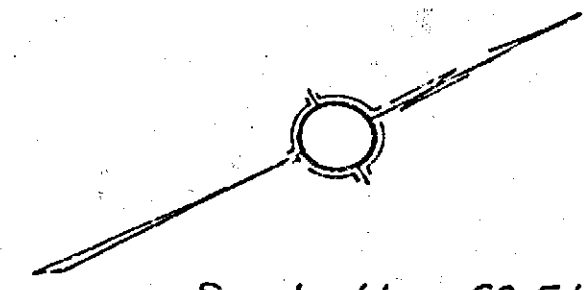


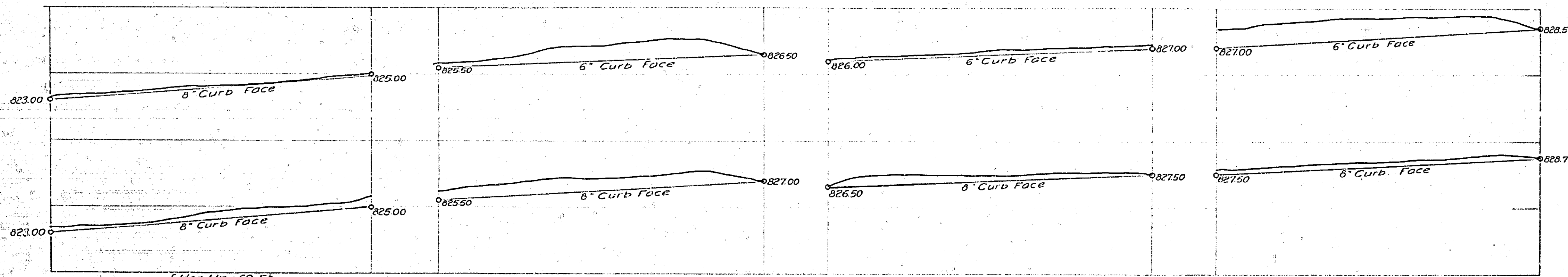
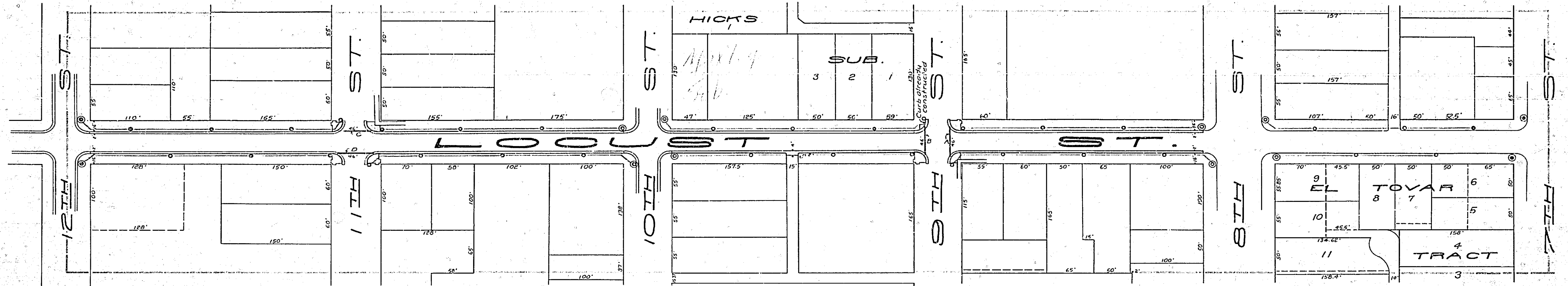
# MAP SHOWING IMPROVEMENTS TO BE MADE ON LOCUST ST. FROM 7TH TO 12TH ST.

Adopted by the Mayor and Common Council of the City of Riverside, this 27th day of Dec. 1921.  
Attest, *[Signature]*  
City Clerk

**Legend**  
One lamp, ornamental concrete light standards to be constructed according to Diagram No 1 are shown thus;   
Corrugated iron culverts to be constructed according to diagram No 2, are shown thus;   
Combination Curb and Gutter to be constructed according to Diagram No 3 are shown thus;   
Conduit to be laid is shown thus;   
Sidewalks to be constructed at intersections, shown thus;



Scale 1 in. = 60 Ft.



Scale of Profile (Hor. 1 in. = 60 Ft. Ver. 1 in. = 4 Ft.)

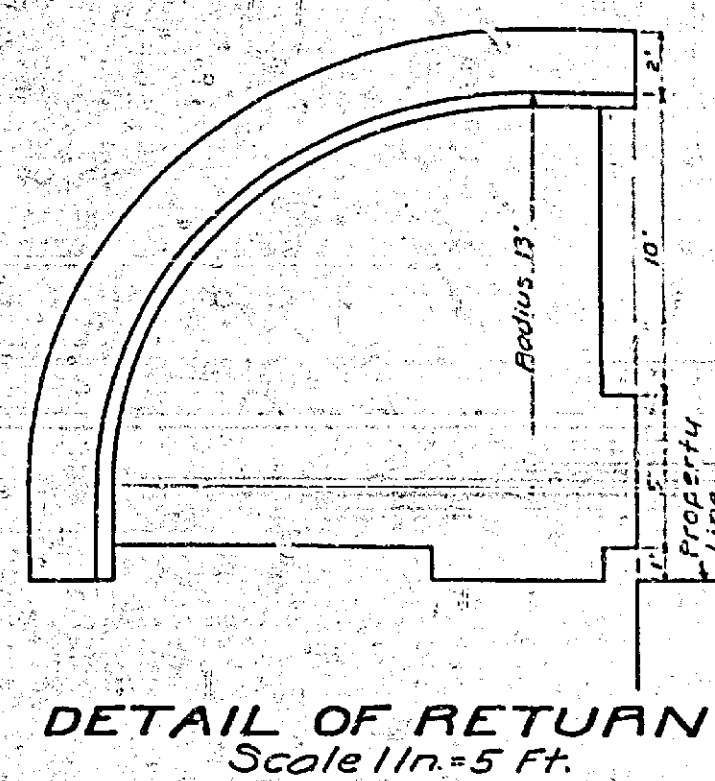


Diagram No 3  
CROSS SECTION OF  
COMBINATION CURB & GUTTER  
Scale 1 1/2 in. = 1 Ft.

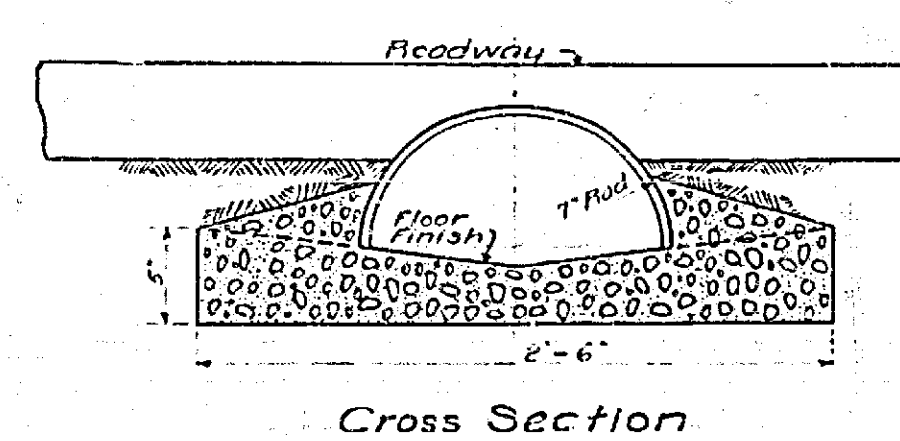


Diagram No 2  
Showing Sections of  
GALVANIZED CORRUGATED IRON  
CULVERTS  
Scale 1 1/2 in. = 1 Ft.

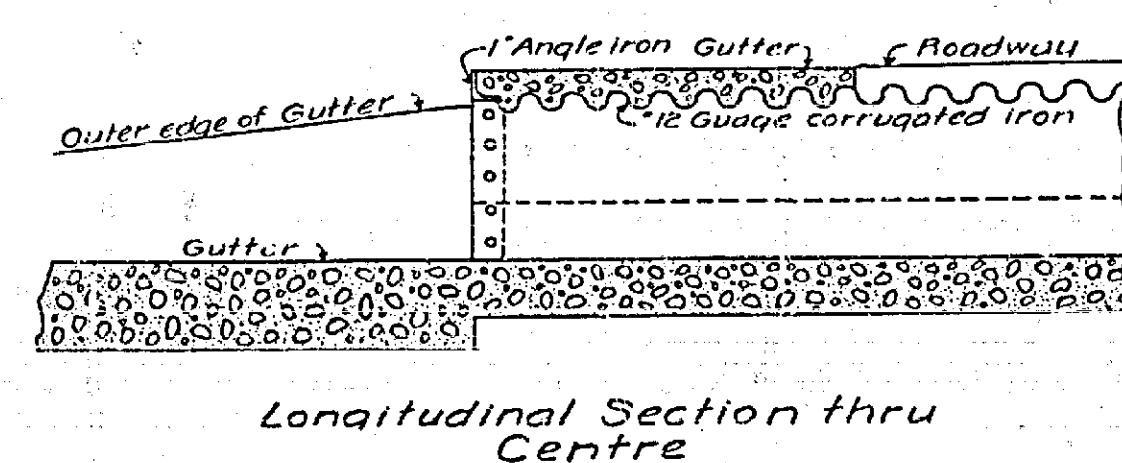
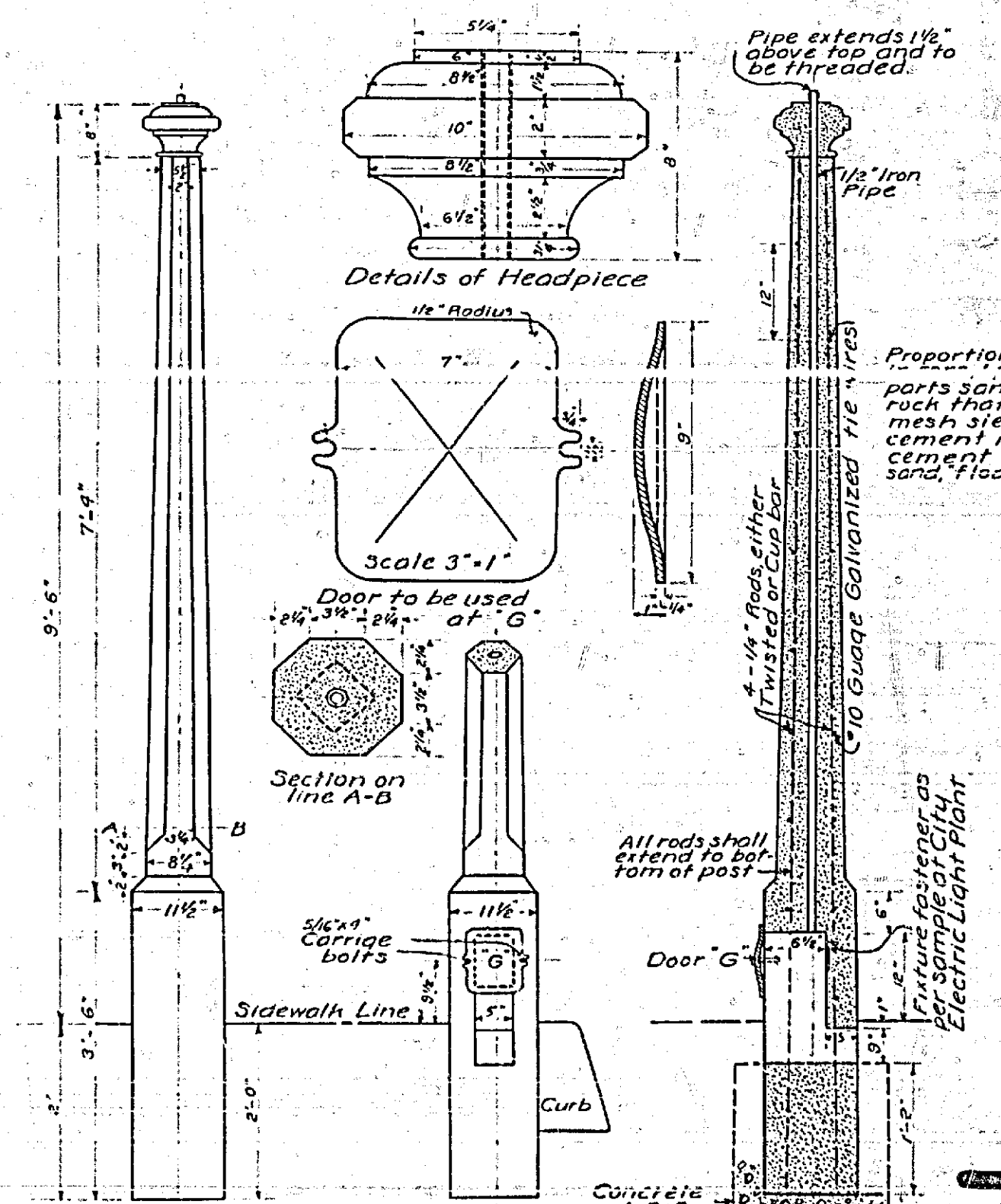


Diagram No 1  
Showing Details of  
ONE LAMP ELECTRIC LIGHT STANDARD  
Scale 3/4 in. = 1 Ft.



768