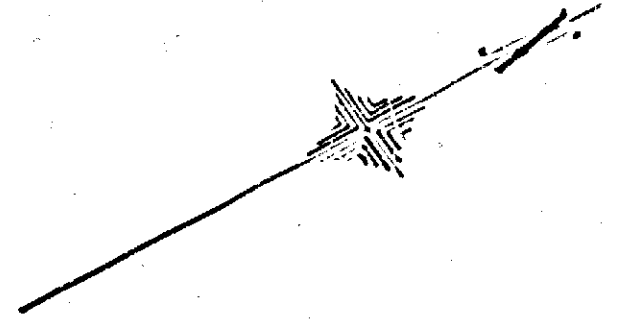


**MAPS SHOWING  
STREETS TO BE  
RESURFACED**  
UNDER RESOLUTION NO 556 (N.S.)  
EXHIBIT "E"  
CONSISTING OF 6 SHEETS AS FOLLOWS:

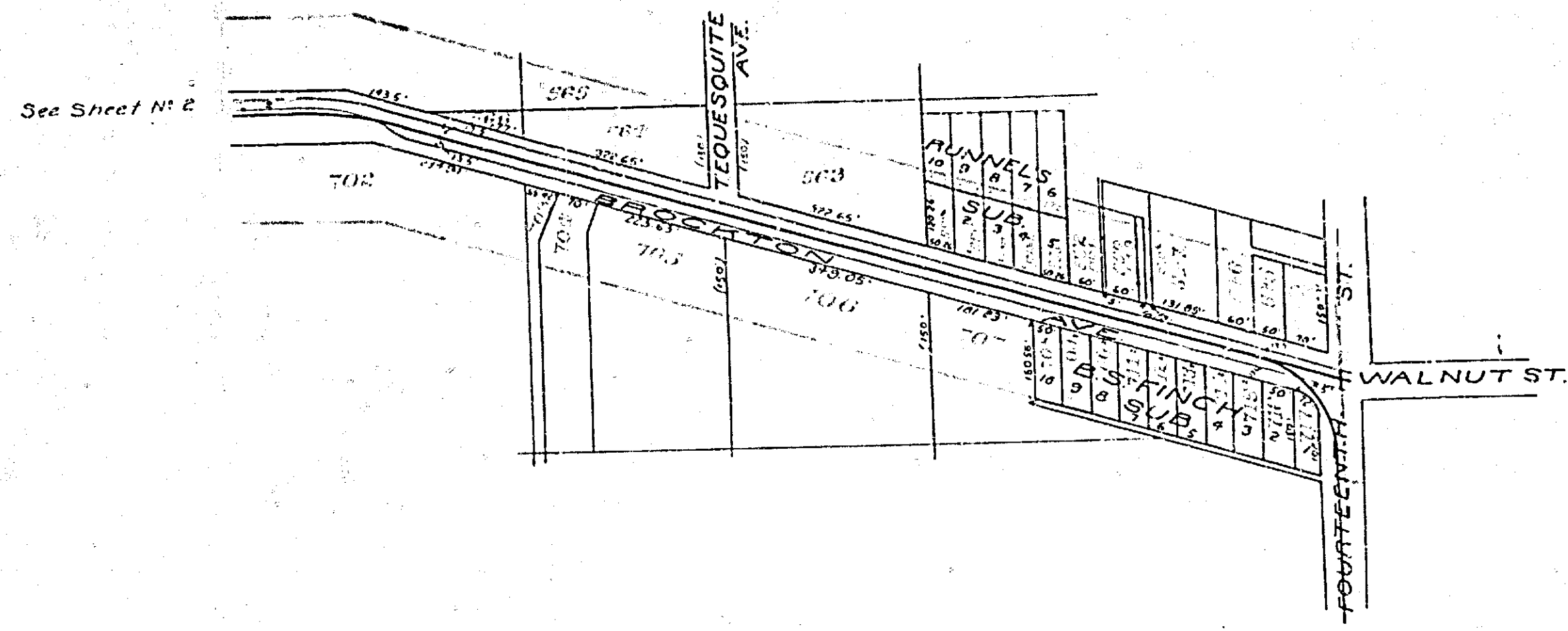
- Brockton Avenue, 14th St. to Jurupa Avenue ----- Sheet 1 and 2
- Jurupa Avenue, Brockton Avenue to Palm Avenue ----- Sheet 3
- Palm Avenue, Jurupa Avenue to Arlington Avenue ----- Sheet 4
- Walnut St. 8th St. to 14th St. ----- Sheet 5
- Orange St. 1st St. to 9th St. ----- Sheet 6
- Fourteenth St. Main St. to High St. ----- Sheet 3
- Victoria Avenue, 14th St. to bridge ----- Sheet 3
- Eleventh St. Main St. to Walnut St. ----- Sheet 6



Scale 1 in = 200 Ft.

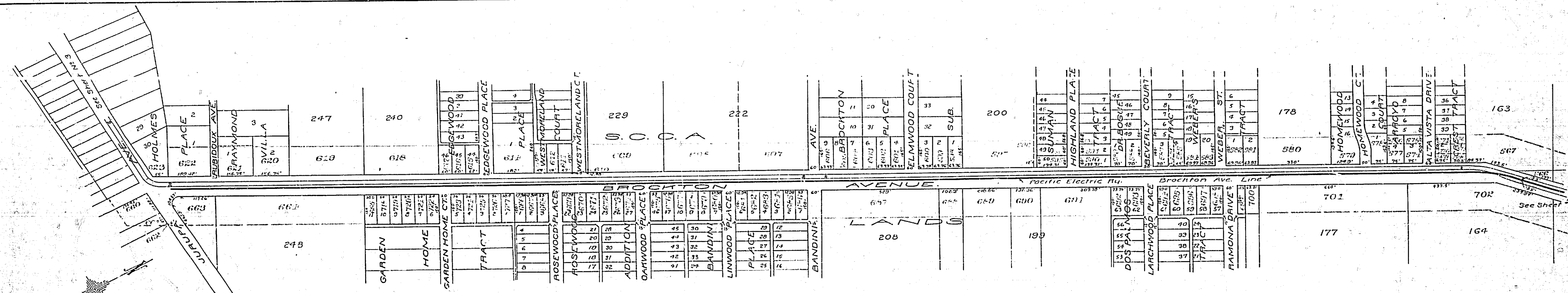
Armor Coat surface 1" thick constructed 1923

Adopted by the Mayor and Common Council of the City of Riverside this day of          1922.  
City Clerk



**775**

MAP NO 775  
SHEET NO 1

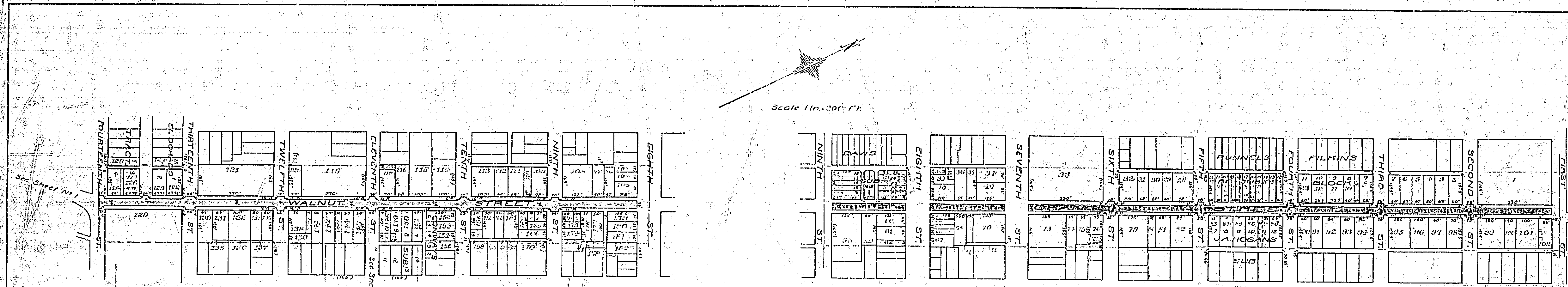


**775**

SHEET NO 2

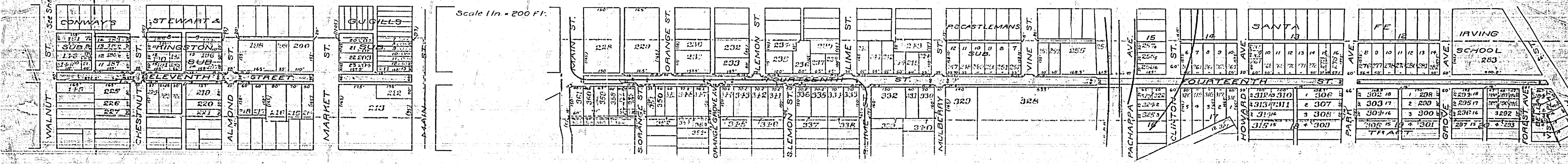






775-C

SHEET No 5



775-D

SHEET No 6