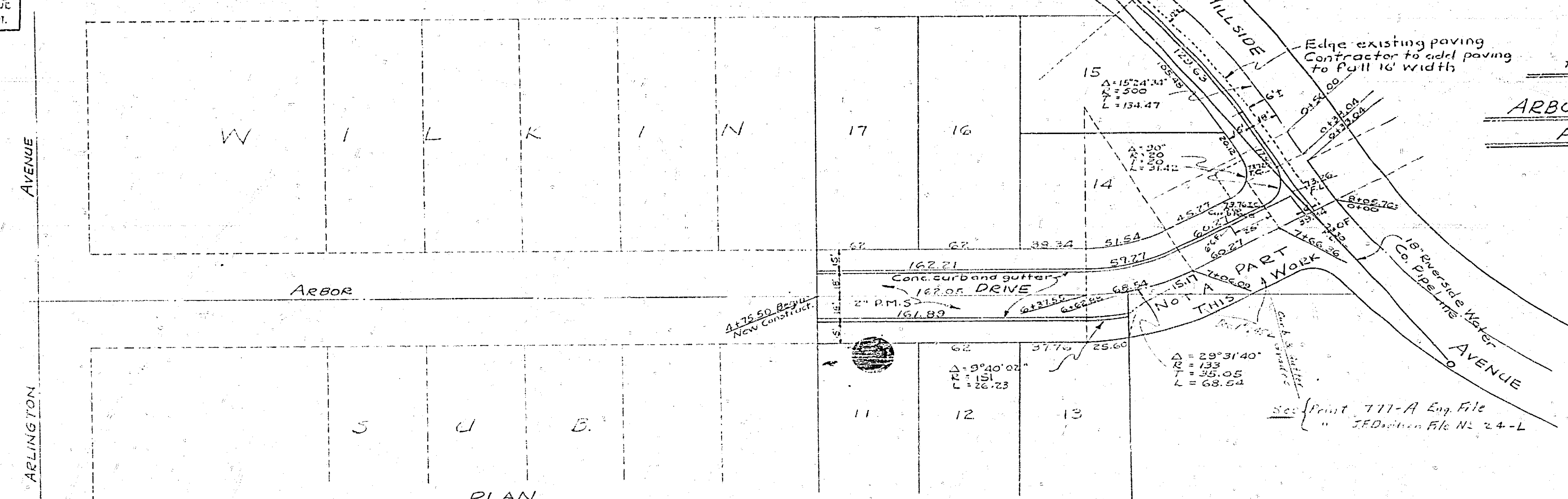


PROPERTY OF  
CITY OF RIVERSIDE  
CITY ENGINEERING DEPT.

PROPERTY OF  
CITY OF RIVERSIDE  
CITY ENGINEERING DEPT.

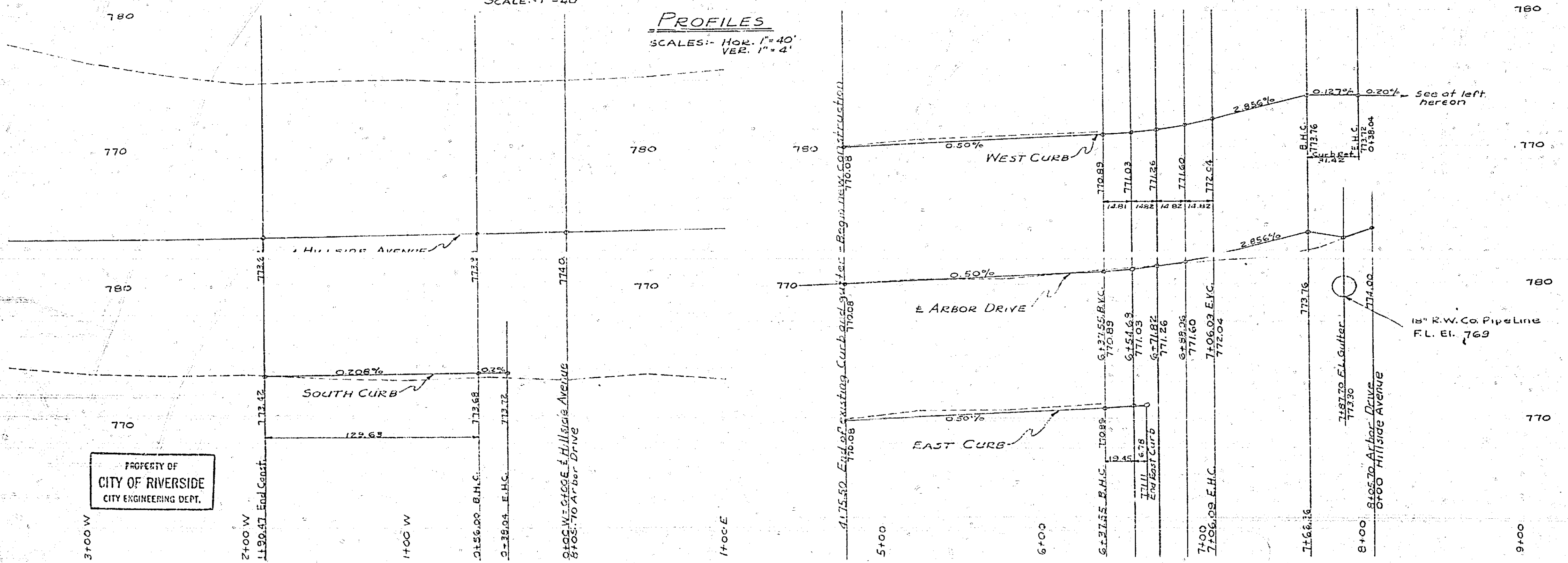
# PLAN AND PROFILE OF ARBOR DRIVE IN WILKIN SUBDIVISION #2 AND HILLSIDE AVENUE

-57-  
ALBERT A WEBB  
CIVIL ENGINEER  
JAN - 1952



PLAN  
SCALE: 1" = 40'

PROFILES  
SCALE: HOR. 1" = 40'  
VER. 1" = 4'



Approved *M.H. Symms*  
City Engineer

NOTE:-  
Bench Mark is R.R. Spike  
in Euc. Tree 80' North of  
corner of Arlington Ave. on N.W.  
corner of Arlington and  
Hillside - See F.B. 403/45  
Riverside City Engineer's  
Office

PROPERTY OF  
CITY OF RIVERSIDE  
CITY ENGINEERING DEPT.

# 777-A

F.B. 192, 150, 153  
Wo. 51-55

76  
77  
78  
79  
80  
81  
82  
83  
84  
85  
86  
87  
88  
89  
90  
91  
92  
93  
94  
95  
96  
97  
98  
99  
100