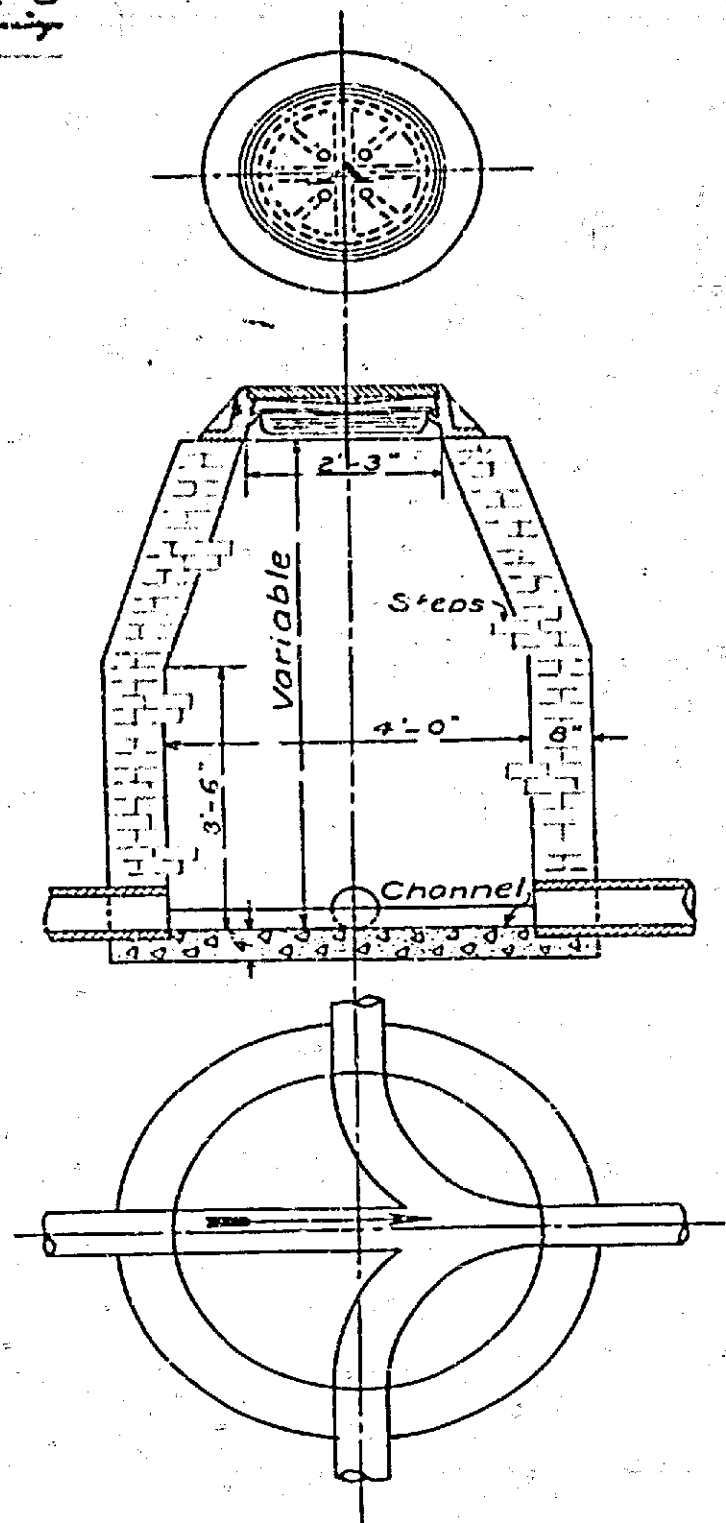
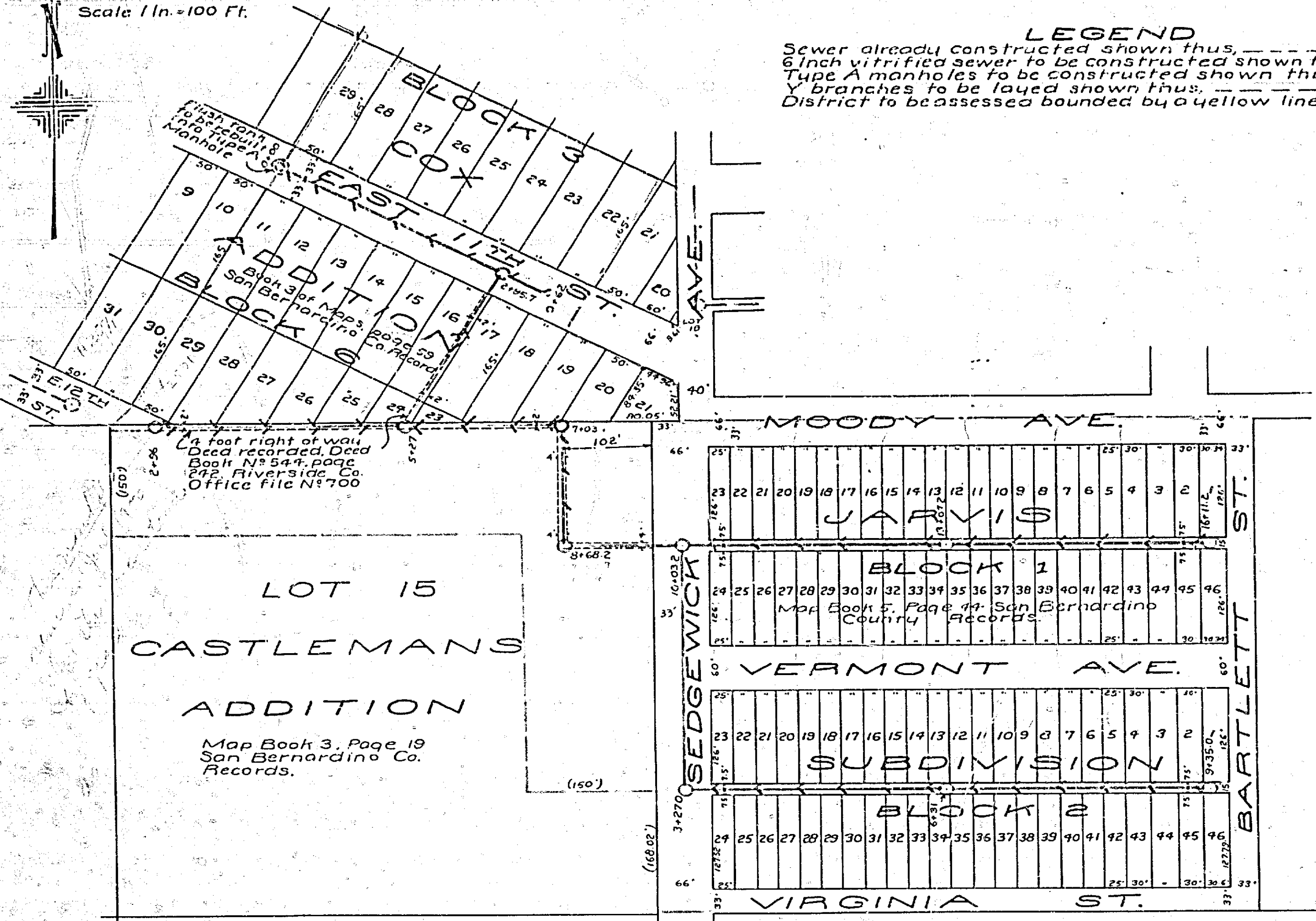


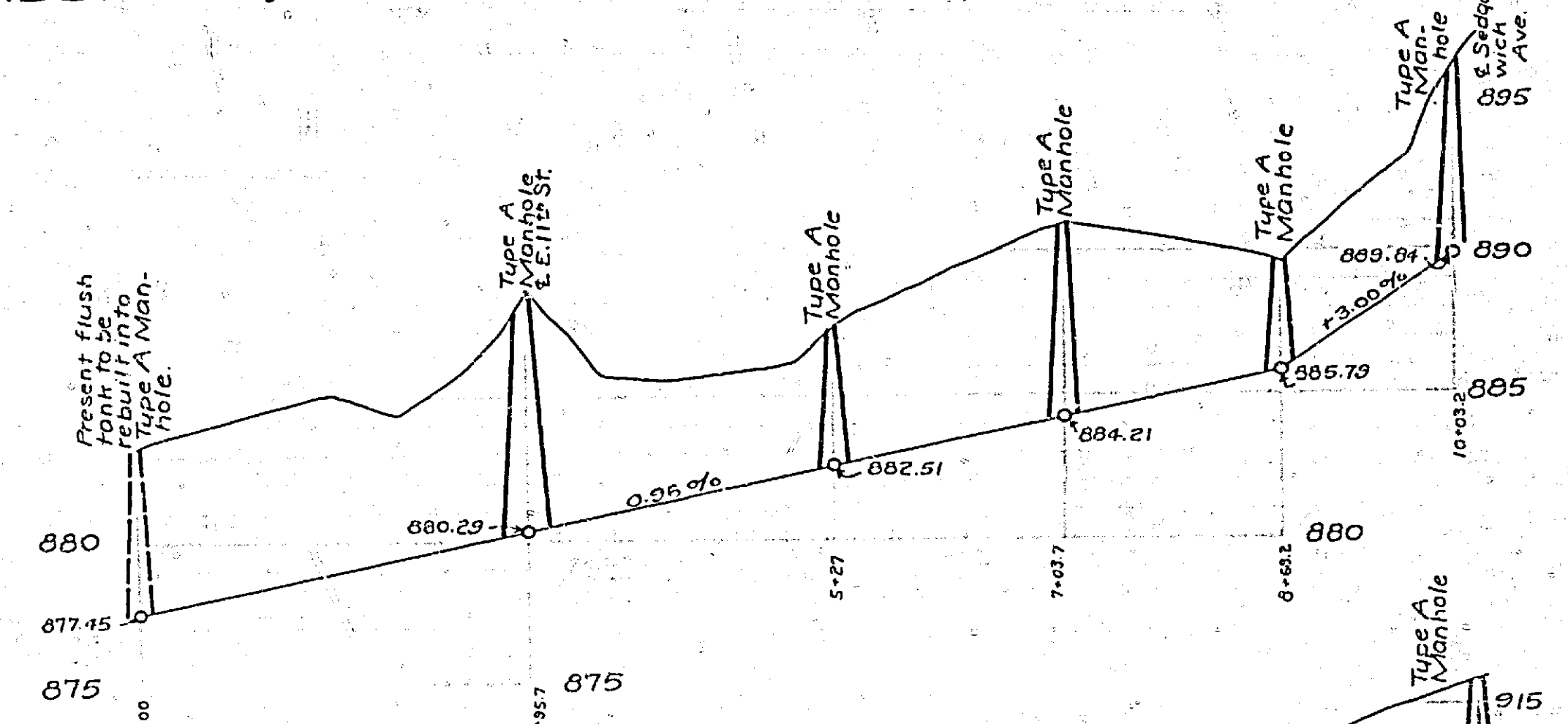
Scale 1 in. = 100 Ft.

LEGEND
 Sewer already constructed shown thus, ---
 6 inch vitrified sewer to be constructed shown thus, ---
 Type A manholes to be constructed shown thus, ---
 Y branches to be laid shown thus, ---
 District to be assessed bounded by a yellow line thus, ---

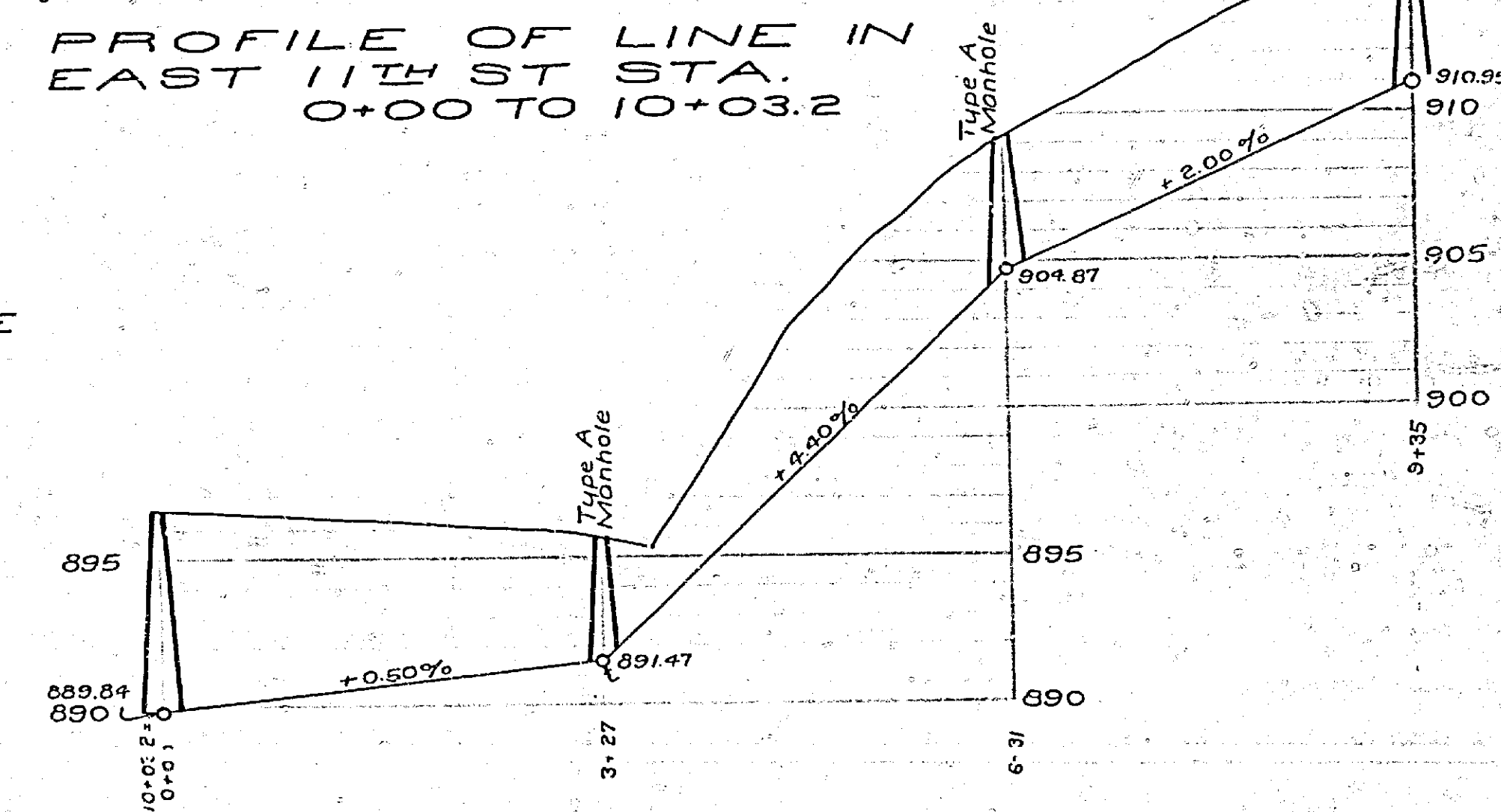
**MAP SHOWING
 SEWER TO BE CONSTRUCTED IN THE
 JARVIS SUBDIVISION
 AND PORTIONS OF COX ADDITION, CASTLEMANS
 ADDITION, EAST ELEVENTH ST. & SEDGEWICK AVE.**



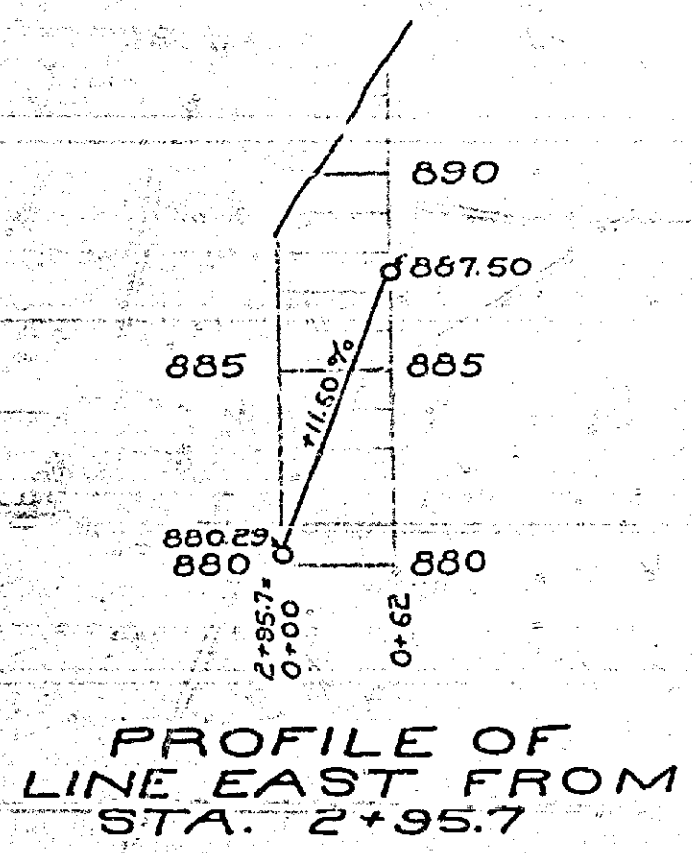
PLAN OF TYPE A MANHOLE



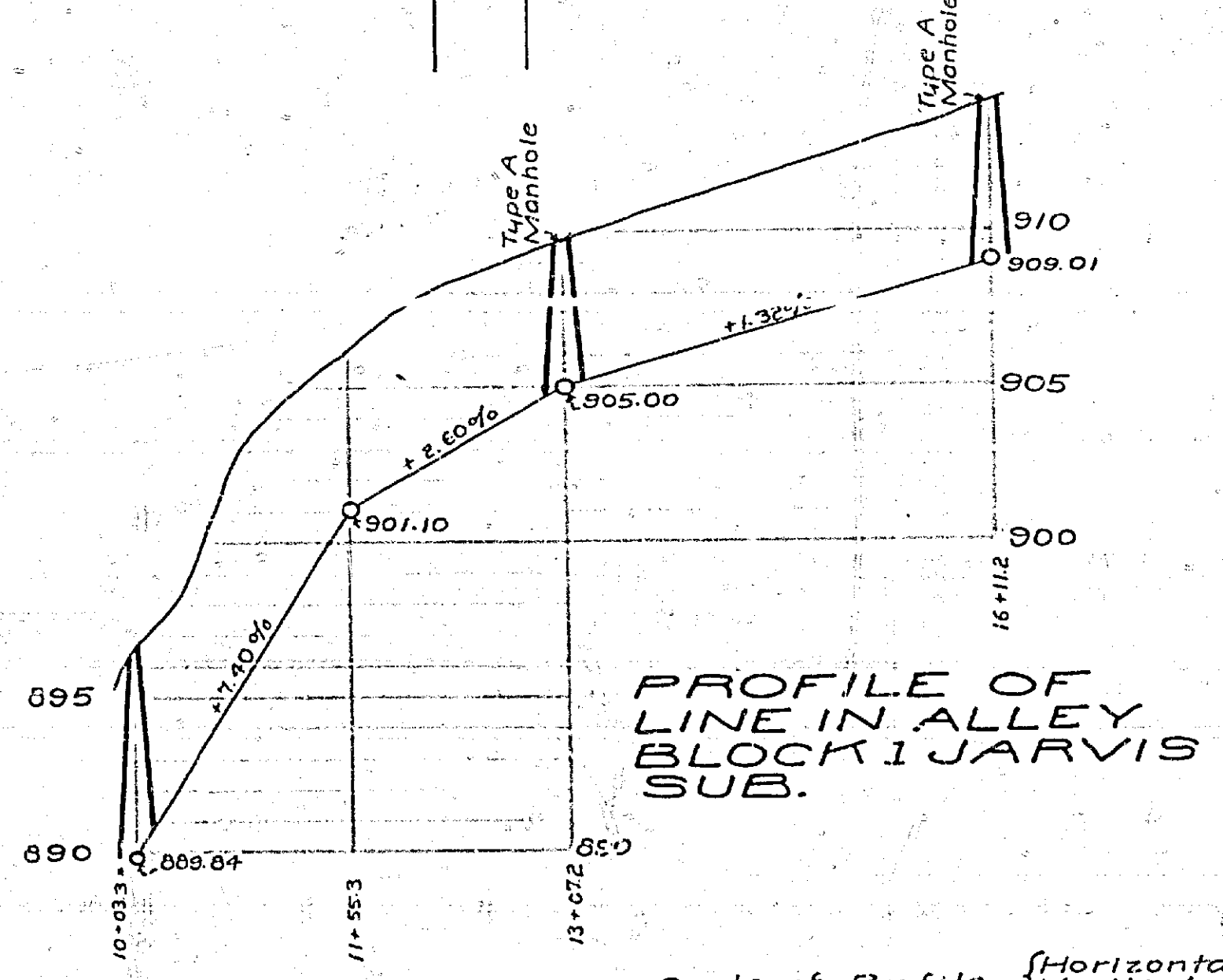
PROFILE OF LINE IN EAST 11TH ST STA. 0+00 TO 10+03.2



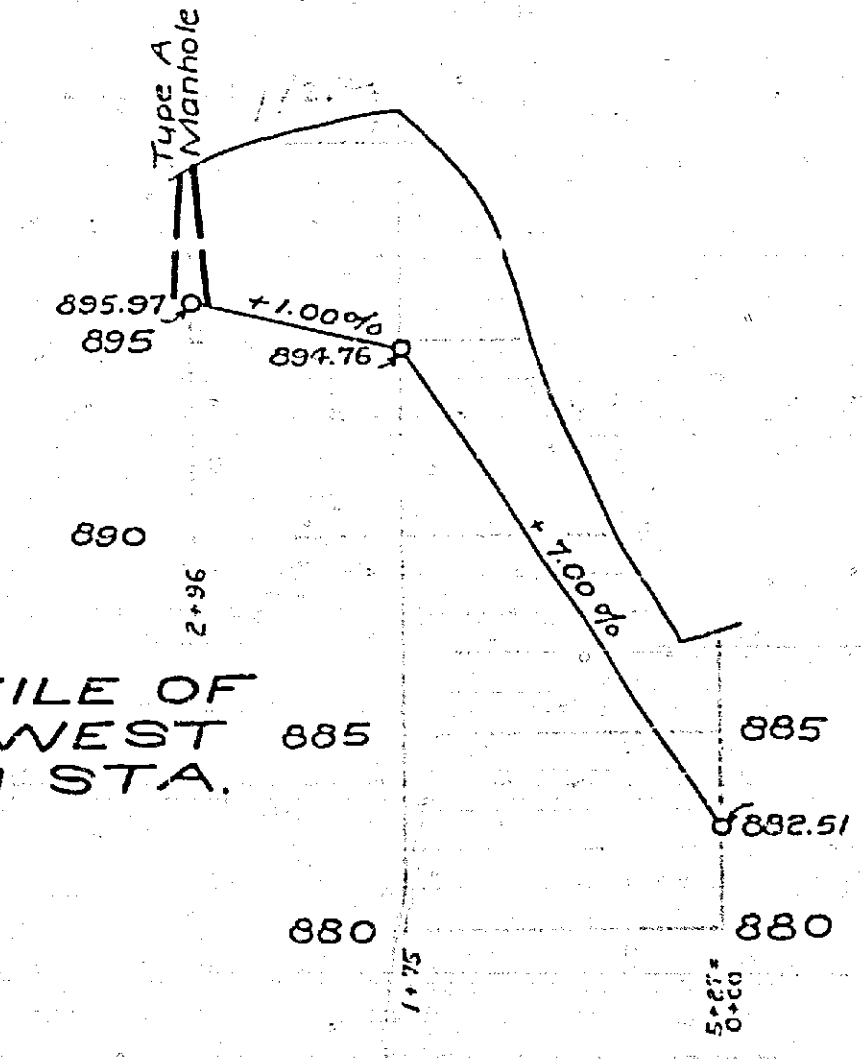
PROFILE OF LINE IN ALLEY, BLOCK 2 JARVIS SUB.



PROFILE OF LINE EAST FROM STA. 2+95.7



PROFILE OF LINE IN ALLEY, BLOCK 1 JARVIS SUB.



PROFILE OF LINE WEST FROM STA. 5+27

Scale of Profile { Horizontal 1 in. = 100 Ft.
 Vertical 1 in. = 4 Ft.
 Note: All grades shown on profile refer to sewer invert.

Adopted by the Mayor and Common Council of the City of Riverside, this 16th day of October 1923.
 Attest: *[Signature]* City Clerk

781

MAP NO 781