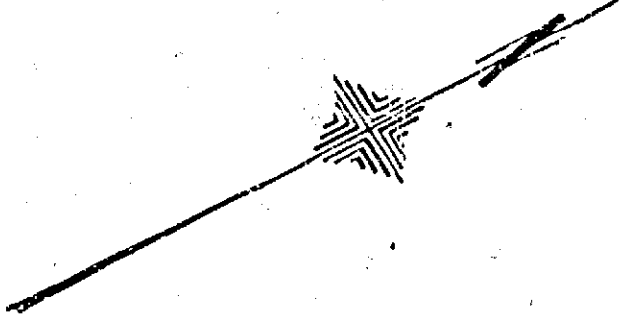


MADE ON



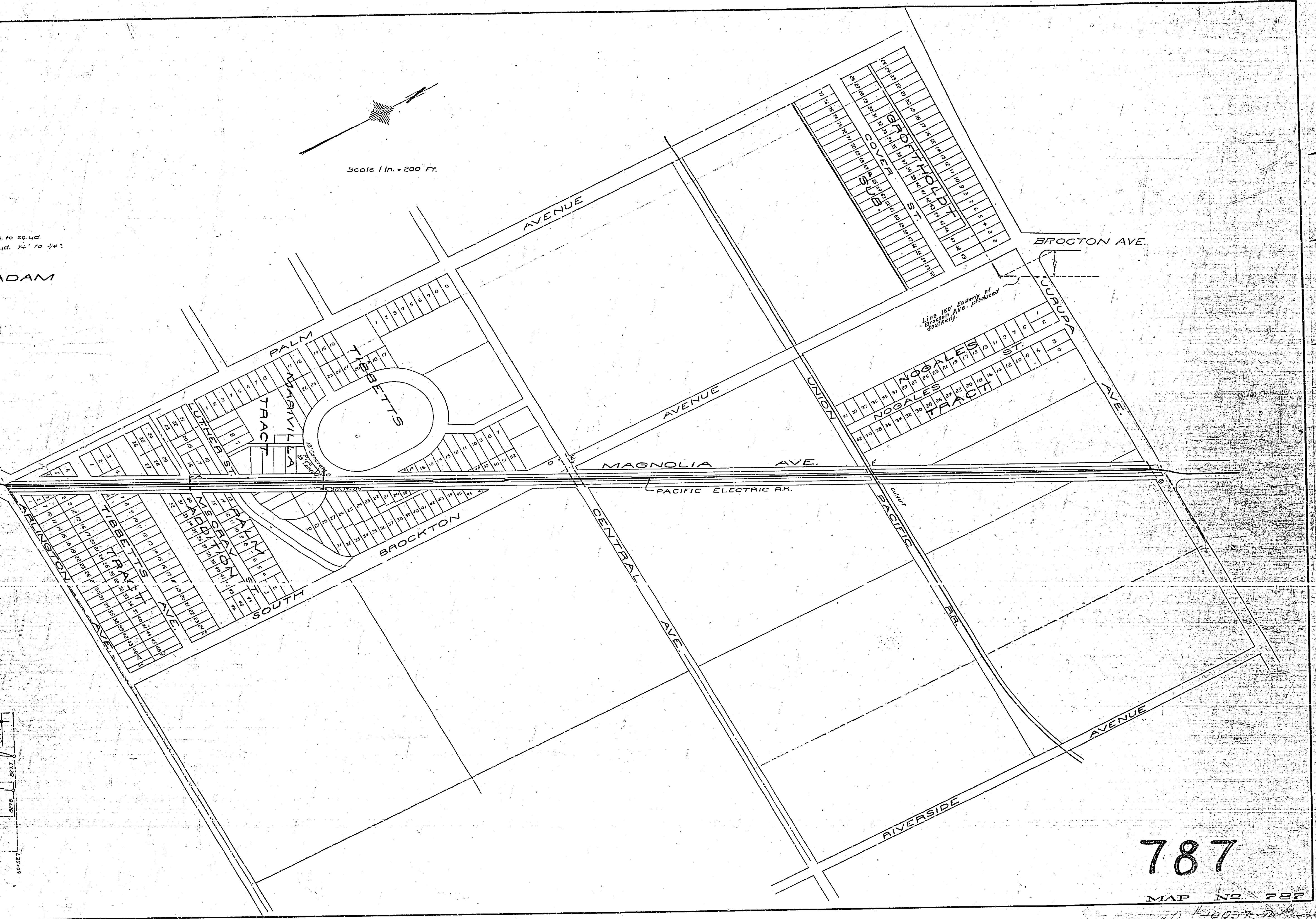
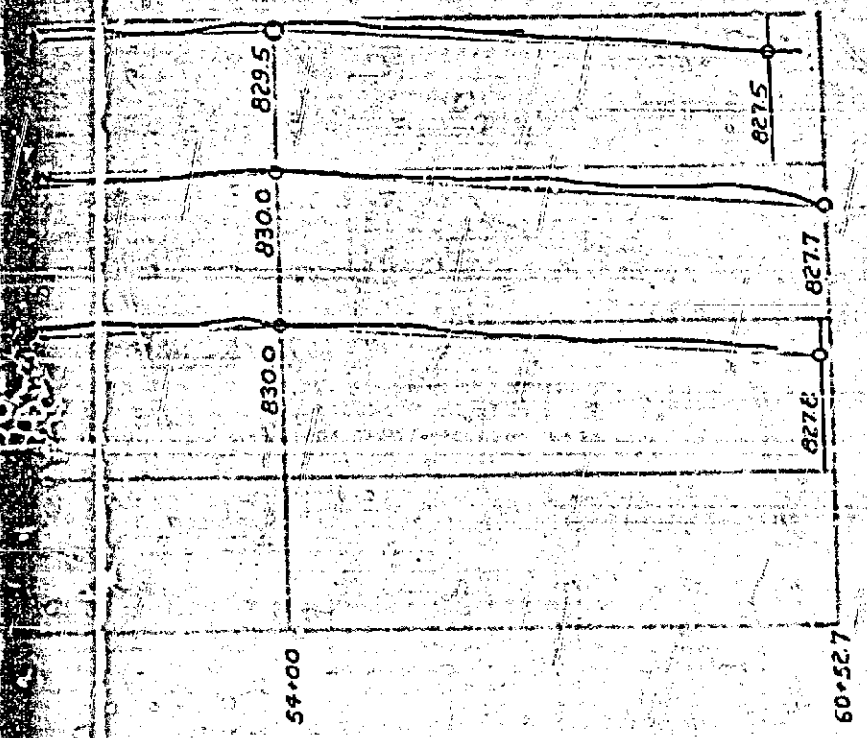
Scale 1 in. = 200 Ft.

Screenings, not less than 36 lbs. to sq. yd.  
Or, 0.35 gallons per sq. yd.  
Crushed rock, 72 lbs. per sq. yd. 1/4" to 3/4"  
Or, 0.4 gallons, per sq. yd.

SECTION OF MACADAM  
ROADWAY  
Width = 8 in.

1924.

Unkilled corrugated  
circular segments  
height 3 in rise with  
1/4" angle iron  
width 10 gauge.



787

MAP No 787

Prepared by [illegible]



# MAP SHOWING IMPROVEMENTS TO BE MADE ON MAGNOLIA AVENUE FROM JURUPA TO ARLINGTON AVES.

LEE NAFZGAR CITY ENGINEER

Adopted by the Mayor and Common Council of the City of Riverside this 17<sup>th</sup> day of July 1923.

Attest *[Signature]*  
City Clerk

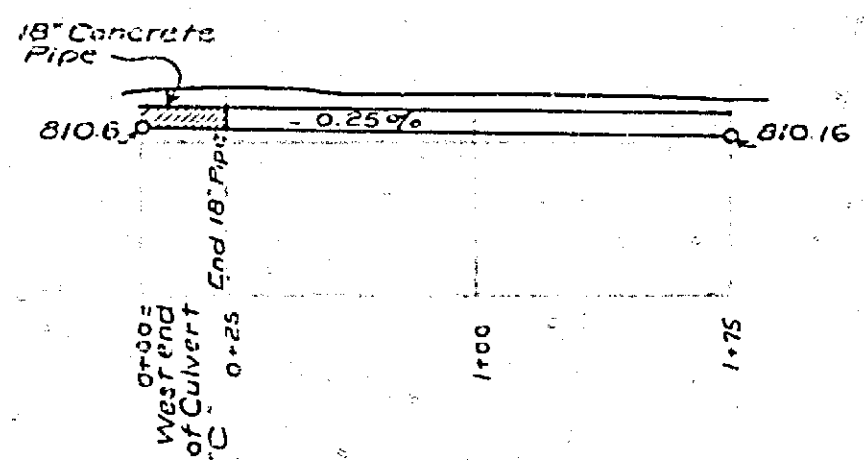
### LEGEND

Macadam roadway to be constructed, shown thus:   
District to be assessed bounded by yellow line, thus:   
Culverts to be constructed and shown thus:   
Cement pipe drainage sewer to be constructed, shown thus:   
The red line show on the center line profile shows the grade at which the work is to be done and refers to the surface of the finished street.  
Elevations are in feet and refer to the established City Datum.

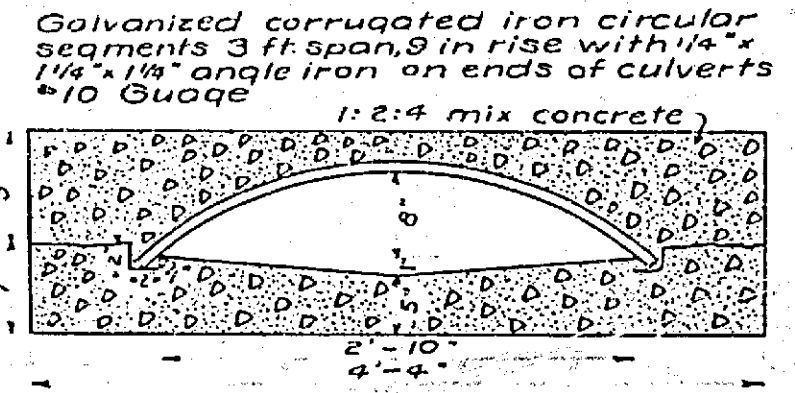
Screenings, not less than 36 lbs. to sq. yd.  
5 1/2" to 3" crushed rock, 16 lbs. per sq. yd. 1/2" to 3/4"  
Crushed rock, 16 lbs. per sq. yd.  
Oil, 0.4 gallons, per sq. yd.

SECTION OF PORTION OF MACADAM  
ROADWAY  
Scale 1 in. = 8 in.

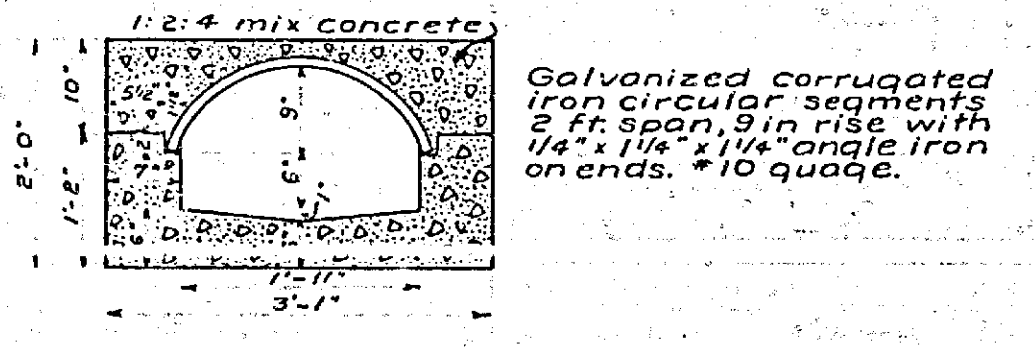
CONSTRUCTED BY PEARSON & DICKERSON 1924.



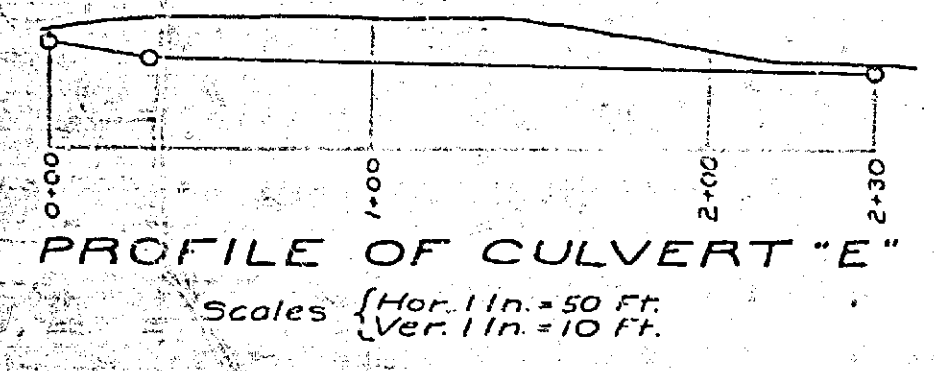
PROFILE OF  
18" DRAINAGE PIPE  
AT SCHOOL CIRCLE  
Scales { Hor. 1 in. = 50 Ft.  
Ver. 1 in. = 10 Ft.



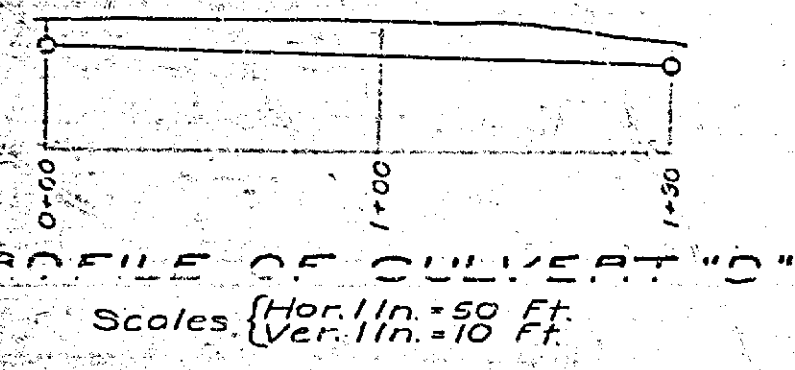
SECTION THRU  
CULVERTS A & D  
SCALE 1" = 1'



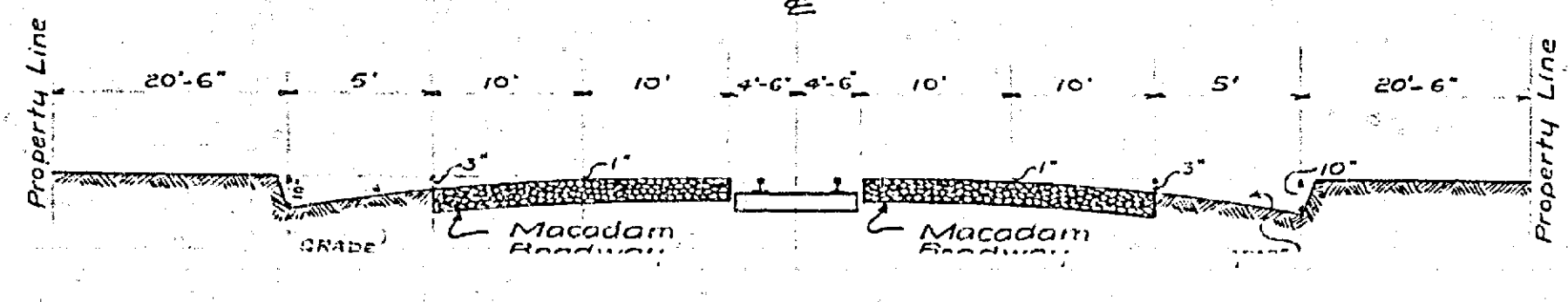
SECTION THRU  
CULVERTS C, E, F & G  
SCALE 3/4" = 1'



PROFILE OF CULVERT "E"  
Scales { Hor. 1 in. = 50 Ft.  
Ver. 1 in. = 10 Ft.



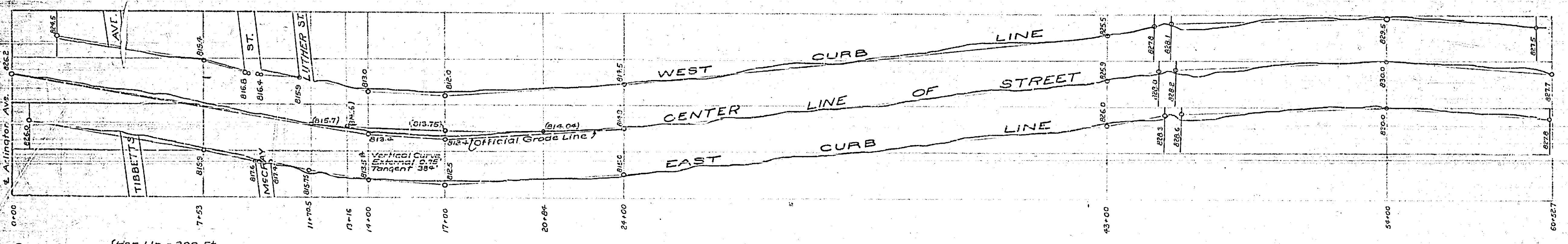
PROFILE OF CULVERT "D"  
Scales { Hor. 1 in. = 50 Ft.  
Ver. 1 in. = 10 Ft.



SECTION OF ROADWAY  
Scales { Hor. 1 in. = 10 Ft.  
Ver. 1 in. = 3 Ft.

CULVERT QUANTITIES  
LENGTH OUTSIDE OF ROAD

|   |            |
|---|------------|
| A | 30 Ft.     |
| B | 30 Ft.     |
| C | 179.78 Ft. |
| D | 114.78 Ft. |
| E | 114.78 Ft. |
| F | 114.78 Ft. |
| G | 114.78 Ft. |



Scale of profile { Hor. 1 in. = 200 Ft.  
Ver. 1 in. = 10 Ft.

Note: Figures in parenthesis denote changed grades.

