

22"

17"

17"

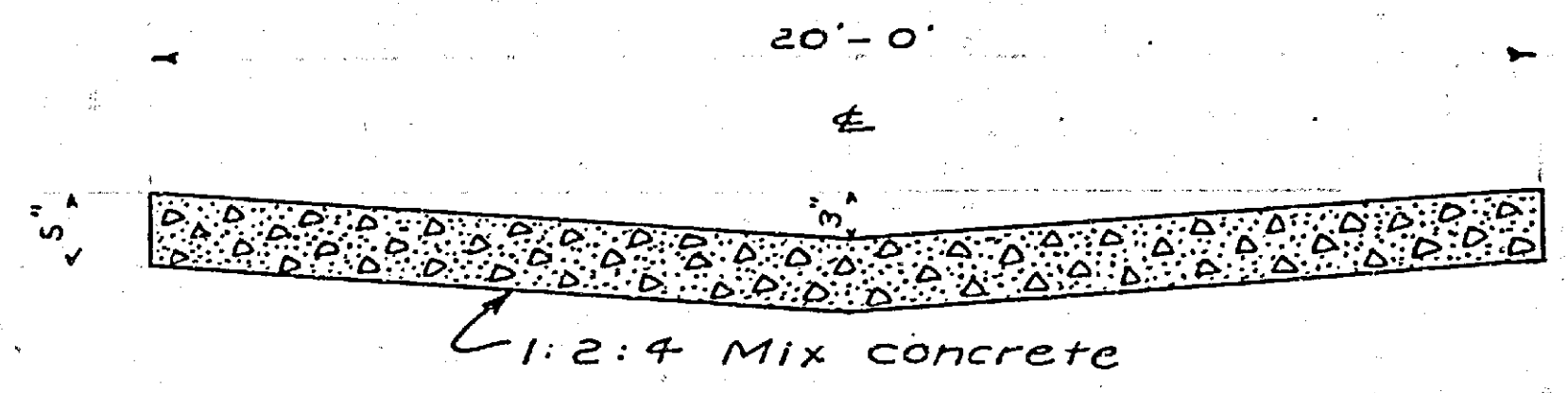
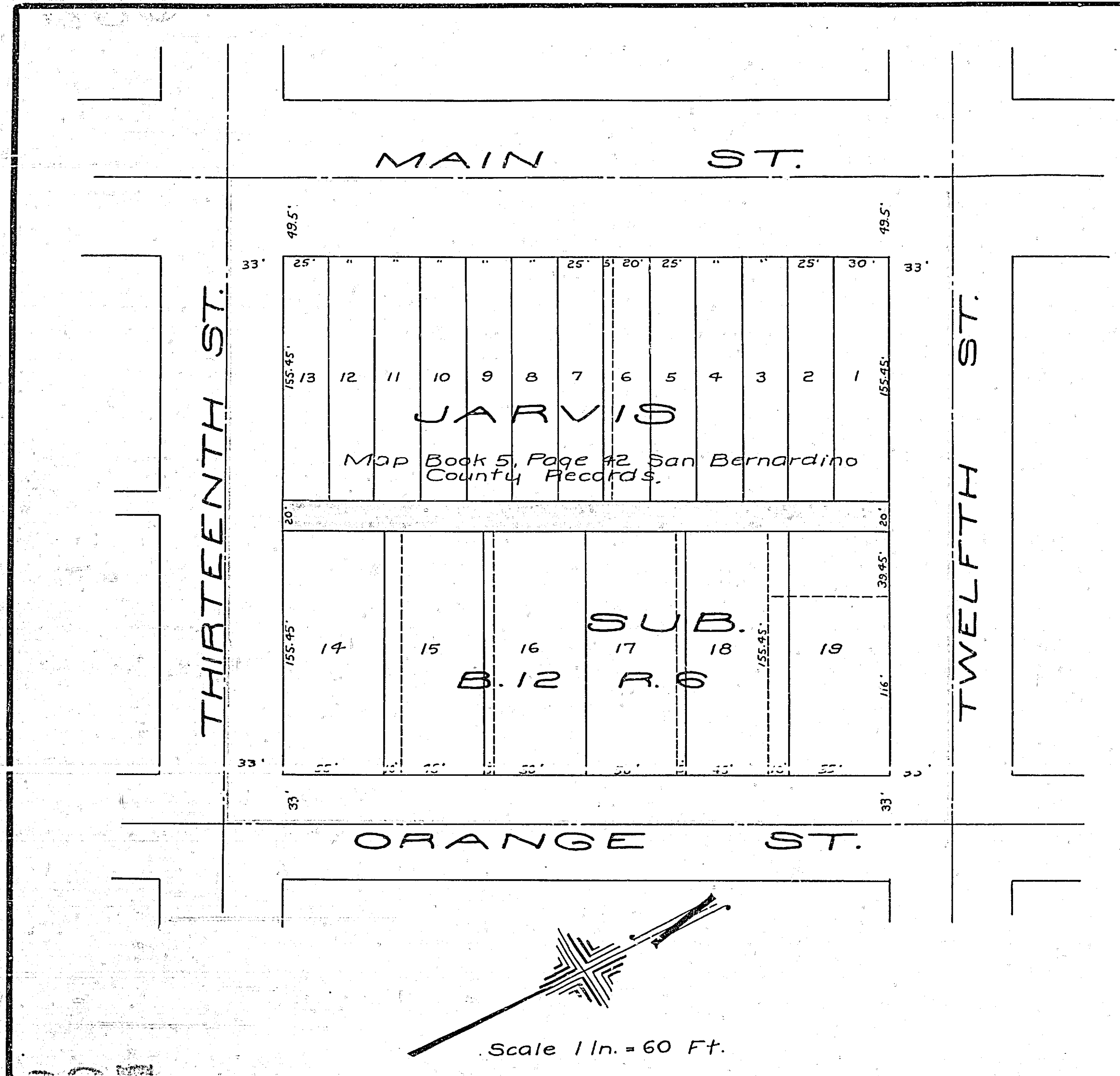
8.5"

8.5"

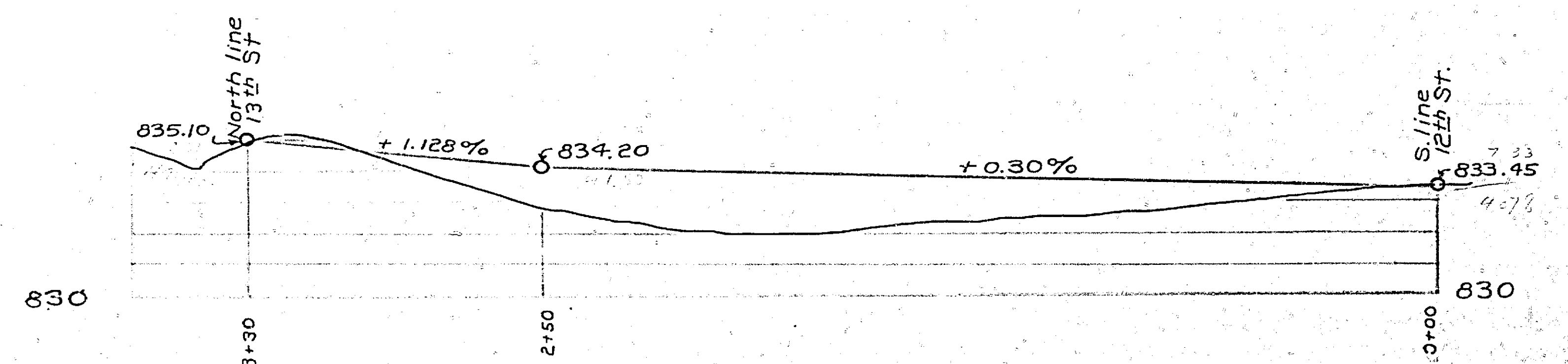
11"

17"

22"



SECTION OF ROADWAY
 Scales { Horizontal 1 in. = 4 Ft.
 Vertical 3/4 in. = 1 Ft.



CENTER LINE PROFILE
 Scales { Horizontal 1 in. = 40 Ft.
 Vertical 1 in. = 4 Ft.

Adopted by the Mayor and Common Council of the City of Riverside, this day of October 1923.

Ariesi City Clerk.

789

MAP SHOWING
ALLEY TO BE IMPROVED
IN THE JARVIS SUBDIVISION

Alley to be paved with 5 inch concrete shown thus,
 District to be assessed bounded by a yellow line, thus,

22"

17"

17"

8.5"

8.5"

11"

17"

22"