

PLAN NO. 798 -A

SHOWING THE LANDS INCLUDED
WITHIN THE ASSESSMENT DISTRICT
TO BE BENEFITED BY THE CONSTRUCTION
OF CONCRETE CURBS, GUTTERS, AND
PIPE DRAIN AND APPURTENANCES.

IN THE MATTER OF

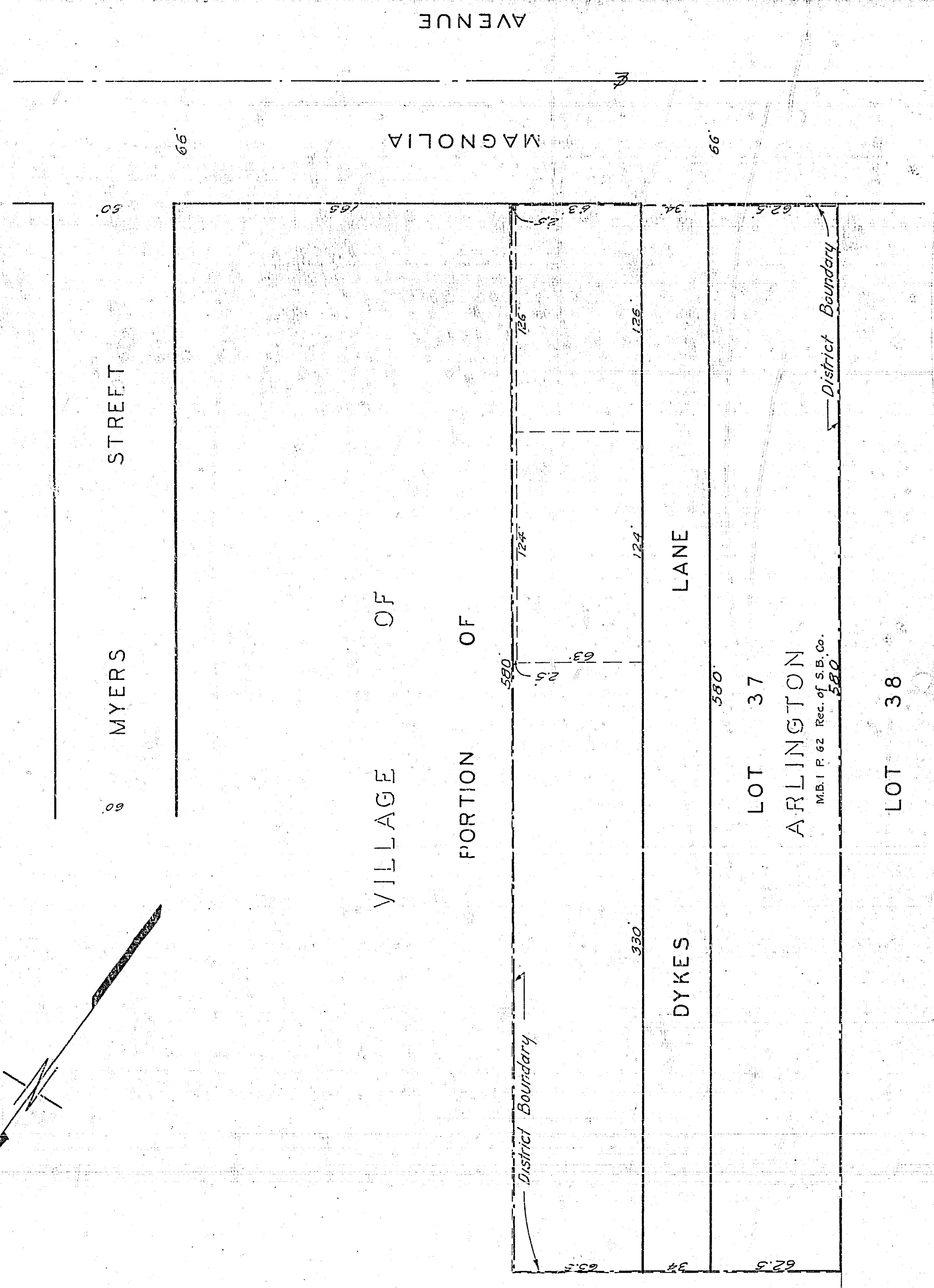
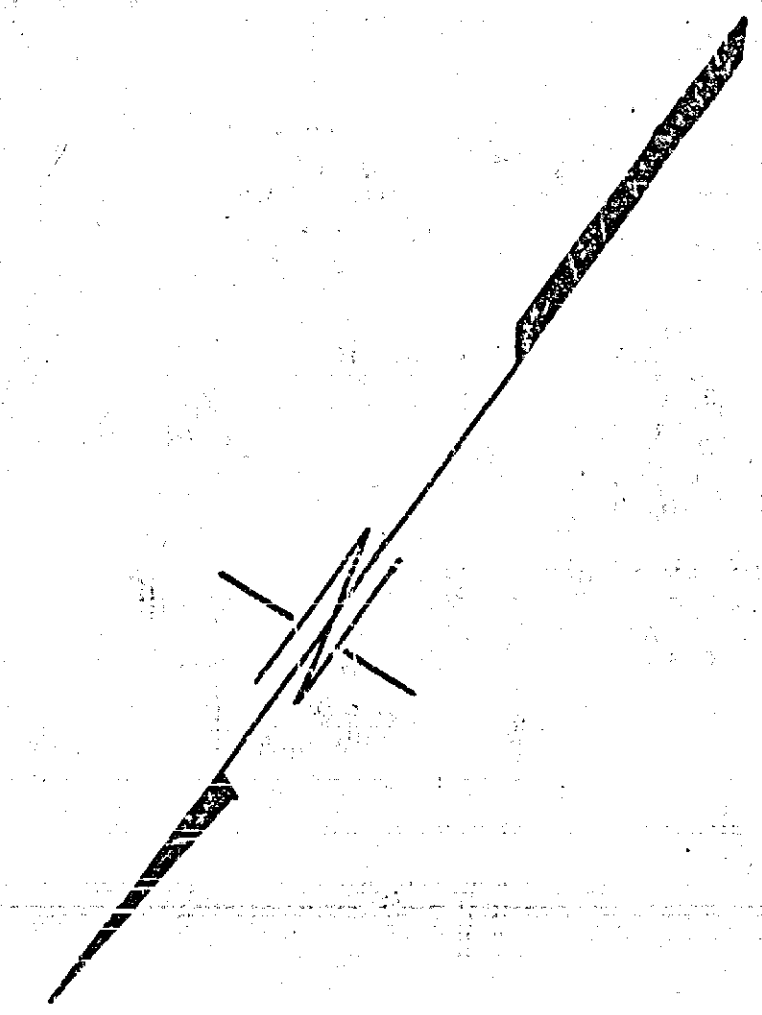
DYKES LANE IMPROVEMENT DISTRICT RIVERSIDE - CALIFORNIA

SCALE: 1 IN. = 50 FT.

APPROVED M. N. Swaine, THIS PLAN APPROVED AND ADOPTED
CITY ENGINEER BY THE MAYOR AND COUNCIL OF THE
CITY OF RIVERSIDE, STATE OF CALIFORNIA,
ON THIS ___ DAY OF ___ 1952.

CITY CLERK

DISTRICT BOUNDARY SHOWN THUS _____



798