

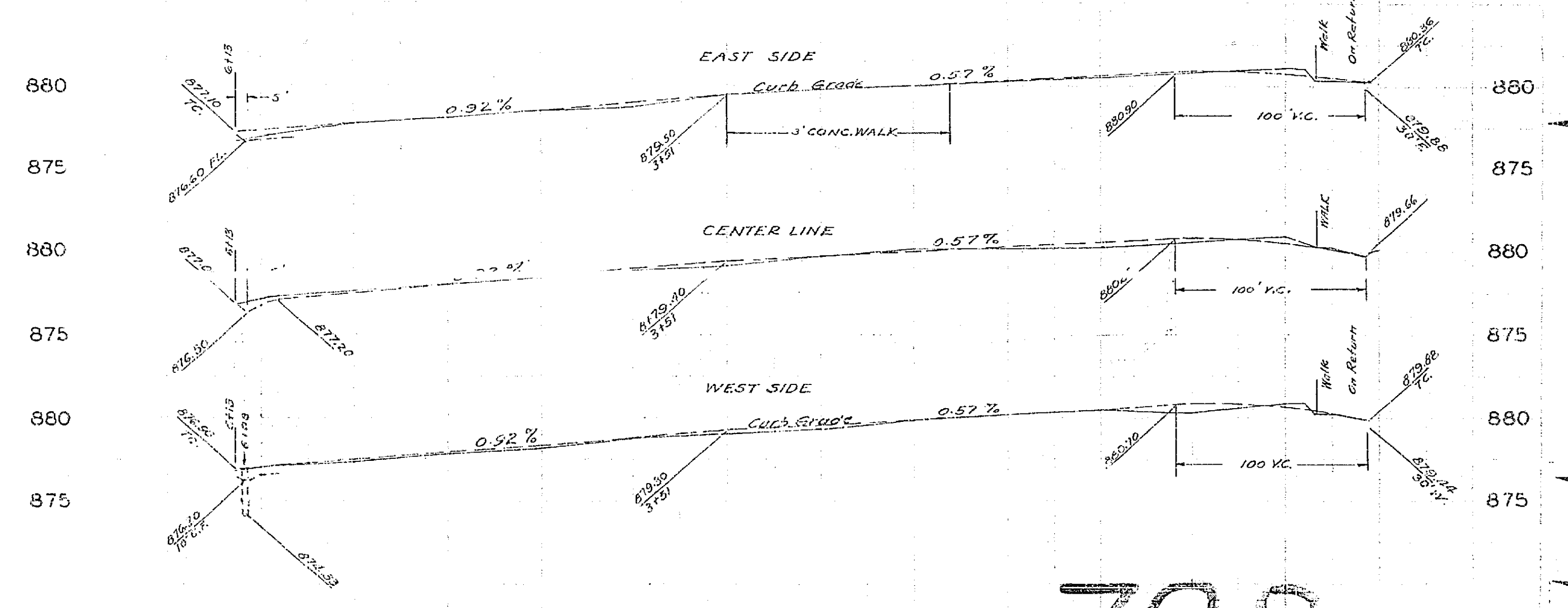
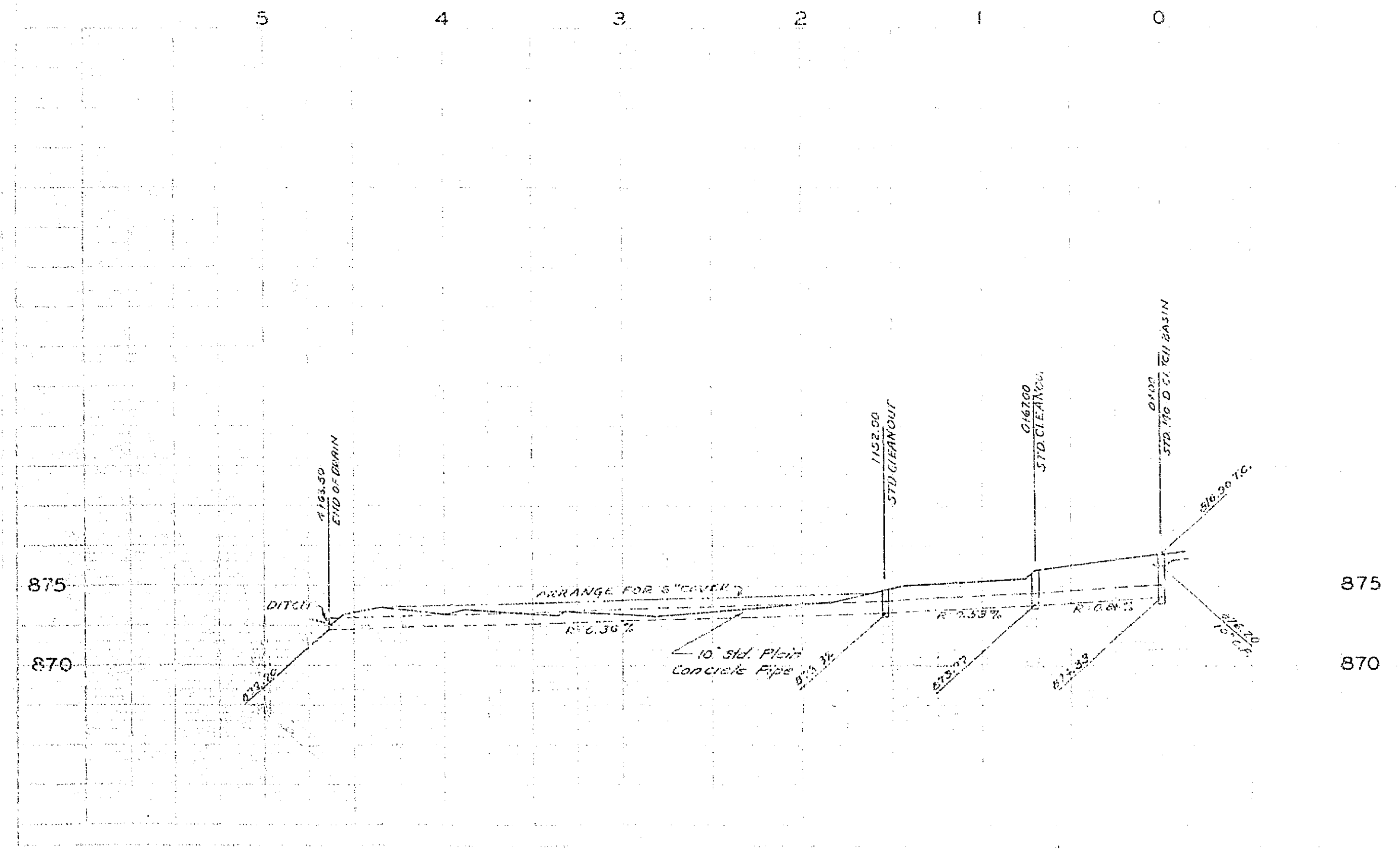
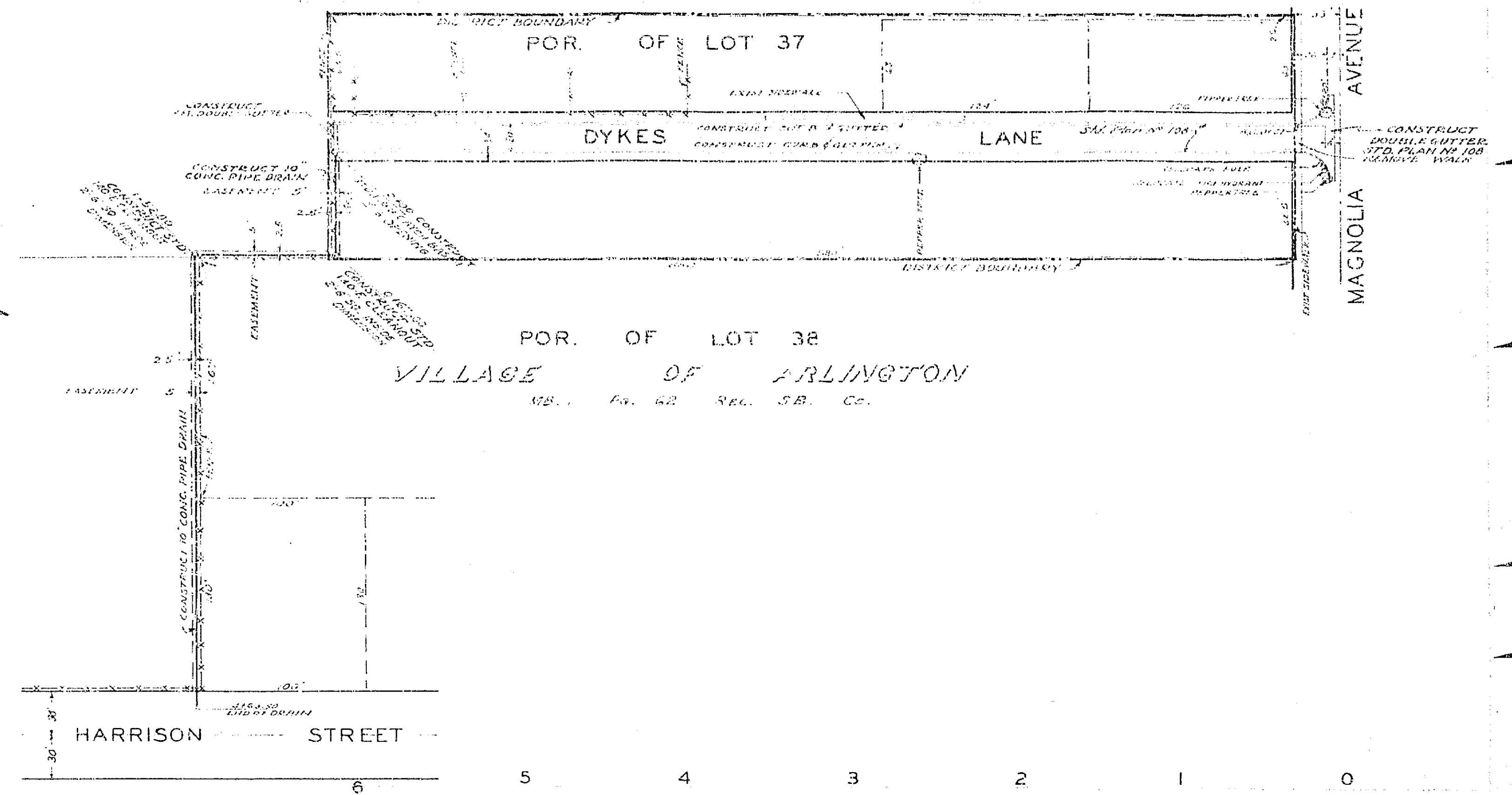
NO. 798
 PLAN & PROFILE
 FOR THE CONSTRUCTION OF CONCRETE CURBS
 AND CUTTERS AND A CONCRETE PIPE DRAIN
DYKES LANE
 AND EASEMENTS

SCALE: HORIZ. IN. = 20 FT.
 VERT. IN. = 5 FT.

APPROVED *M. H. Irvine*
 M. H. IRVINE, REG. CE. 3011
 CITY ENGINEER

THIS PLAN APPROVED AND ADOPTED BY
 THE MAYOR AND COUNCIL OF THE CITY OF
 RIVERSIDE, STATE OF CALIFORNIA, ON THIS
 DAY OF _____ 1952.

 CITY CLERK



798