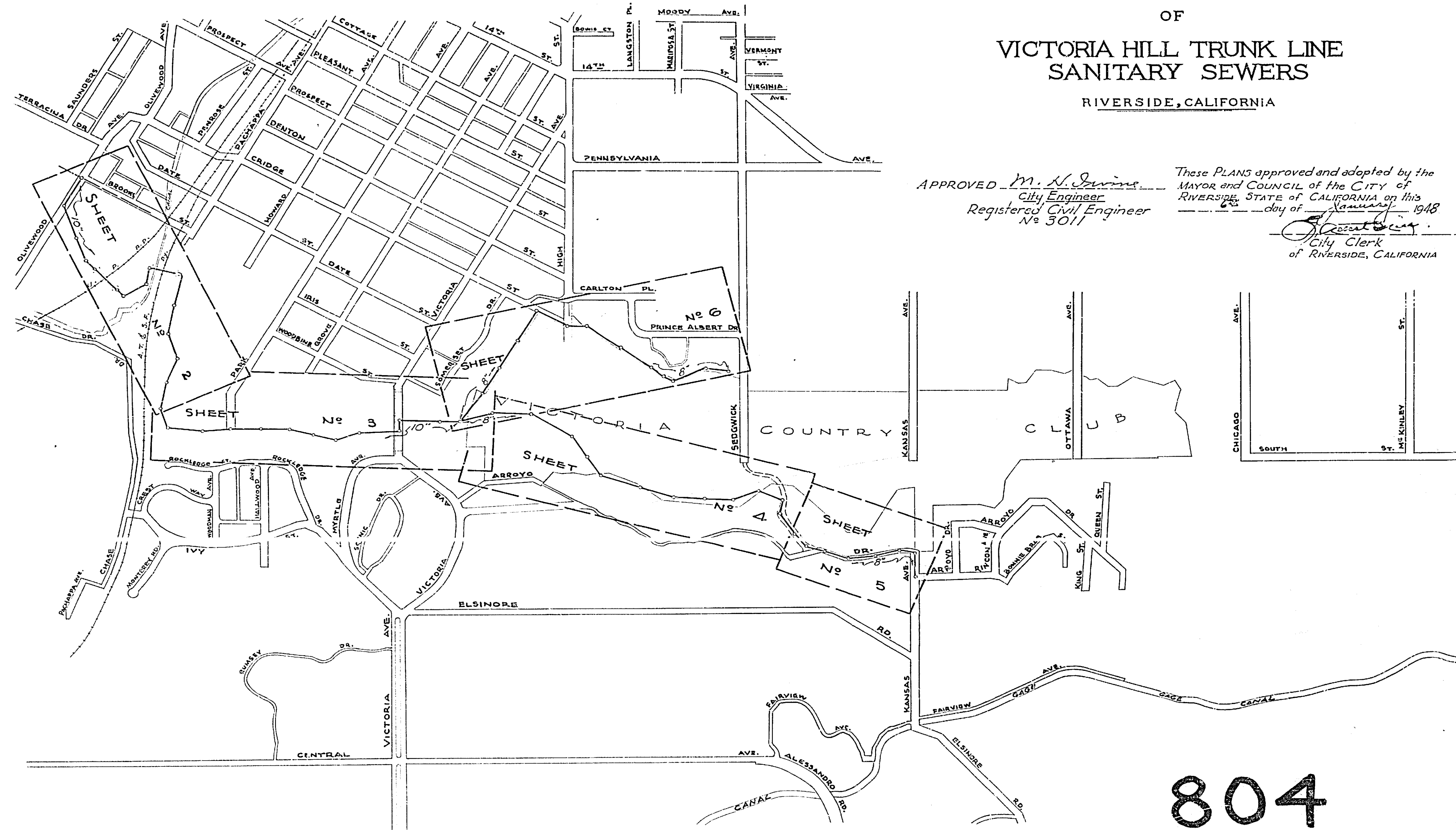


PLANS & PROFILES  
NO. 804  
OF  
VICTORIA HILL TRUNK LINE  
SANITARY SEWERS  
RIVERSIDE, CALIFORNIA

APPROVED *M. N. Irvine*  
City Engineer  
Registered Civil Engineer  
No. 3011

These PLANS approved and adopted by the  
MAYOR and COUNCIL of the CITY of  
RIVERSIDE, STATE of CALIFORNIA on this  
6th day of November, 1918

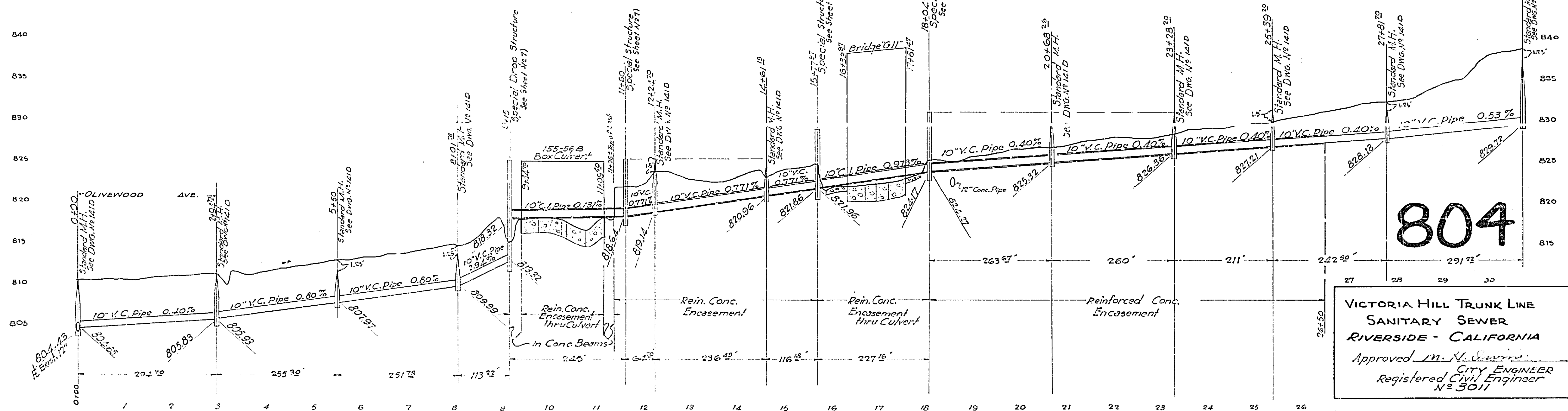
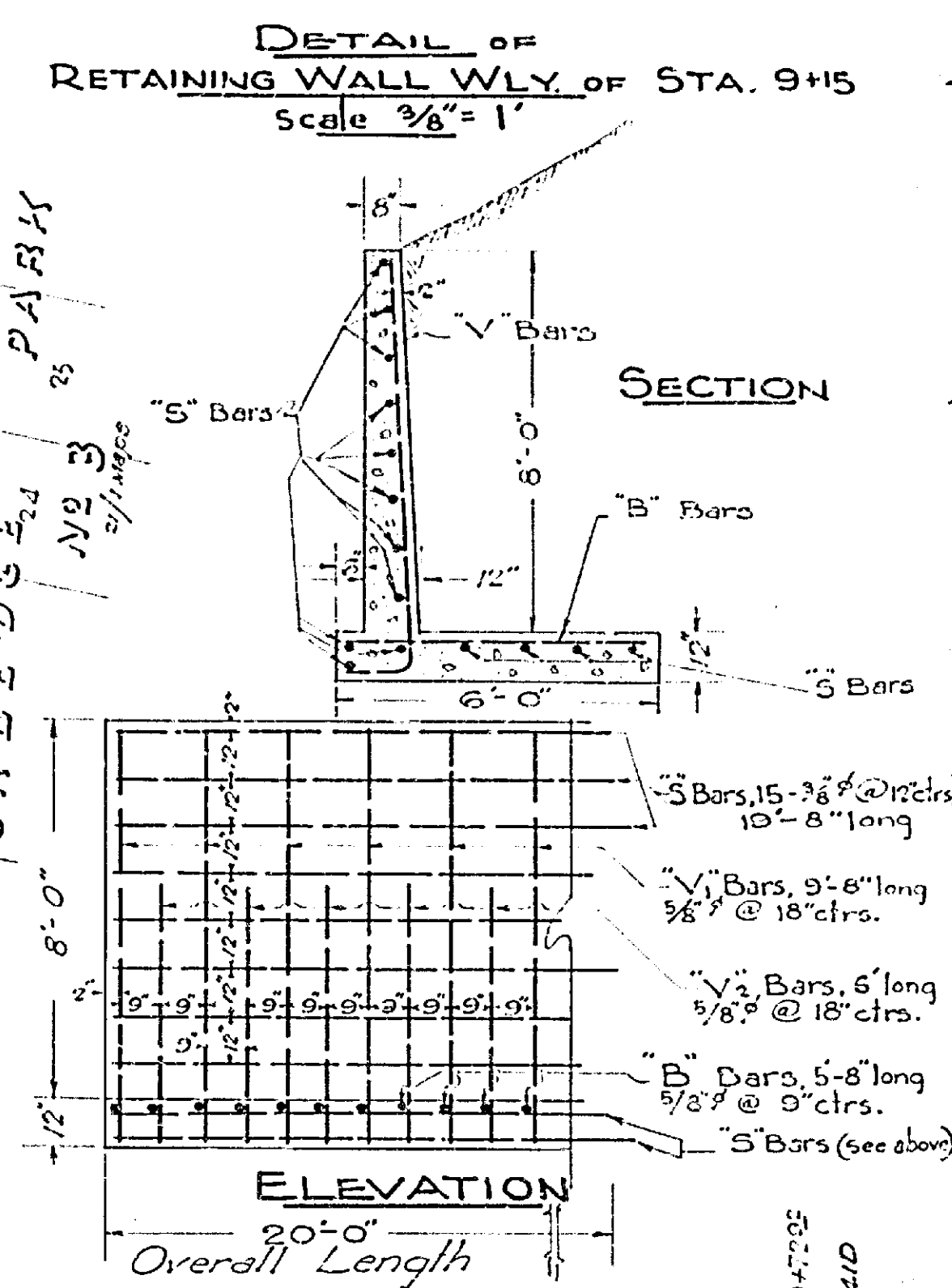
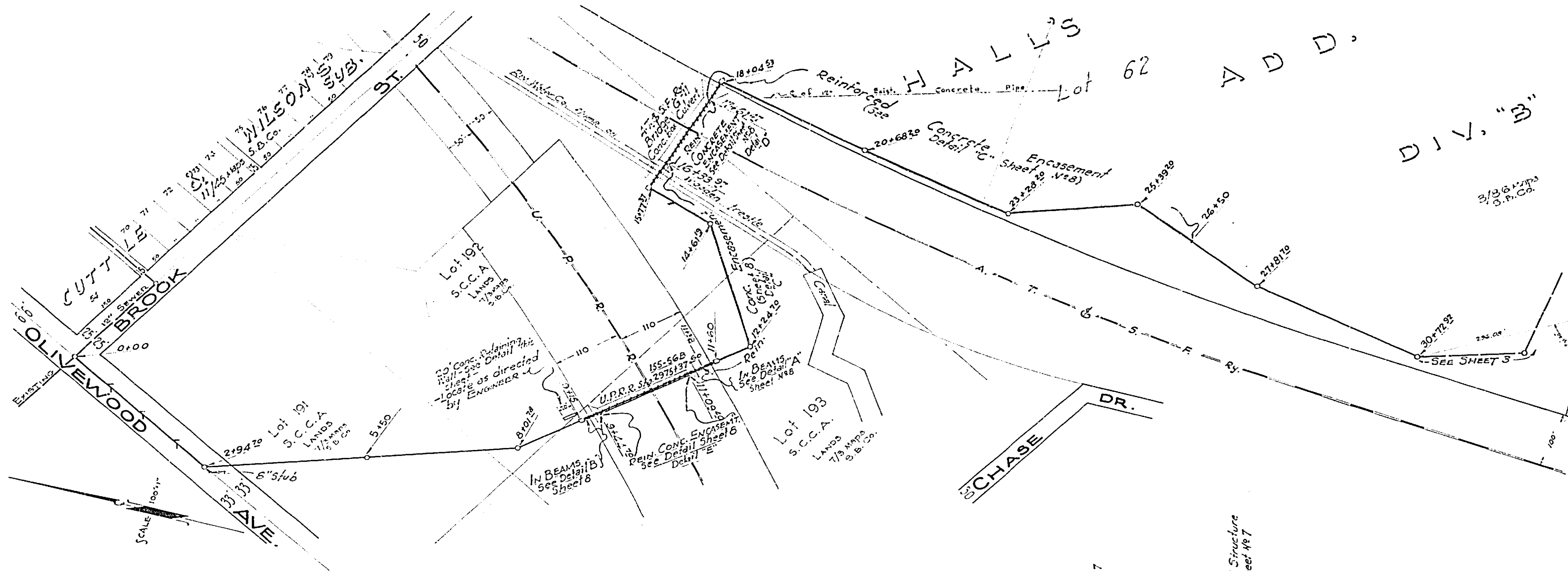
*Robert B. King*  
City Clerk  
of RIVERSIDE, CALIFORNIA



804

34"  
27"  
17"  
8.5"  
8.5"  
11"  
17"

22"  
11"  
11"  
5.8"  
8.5"  
11"  
17"  
22"



**MISSING**

**MISSING**

**MISSING**

**MISSING**



