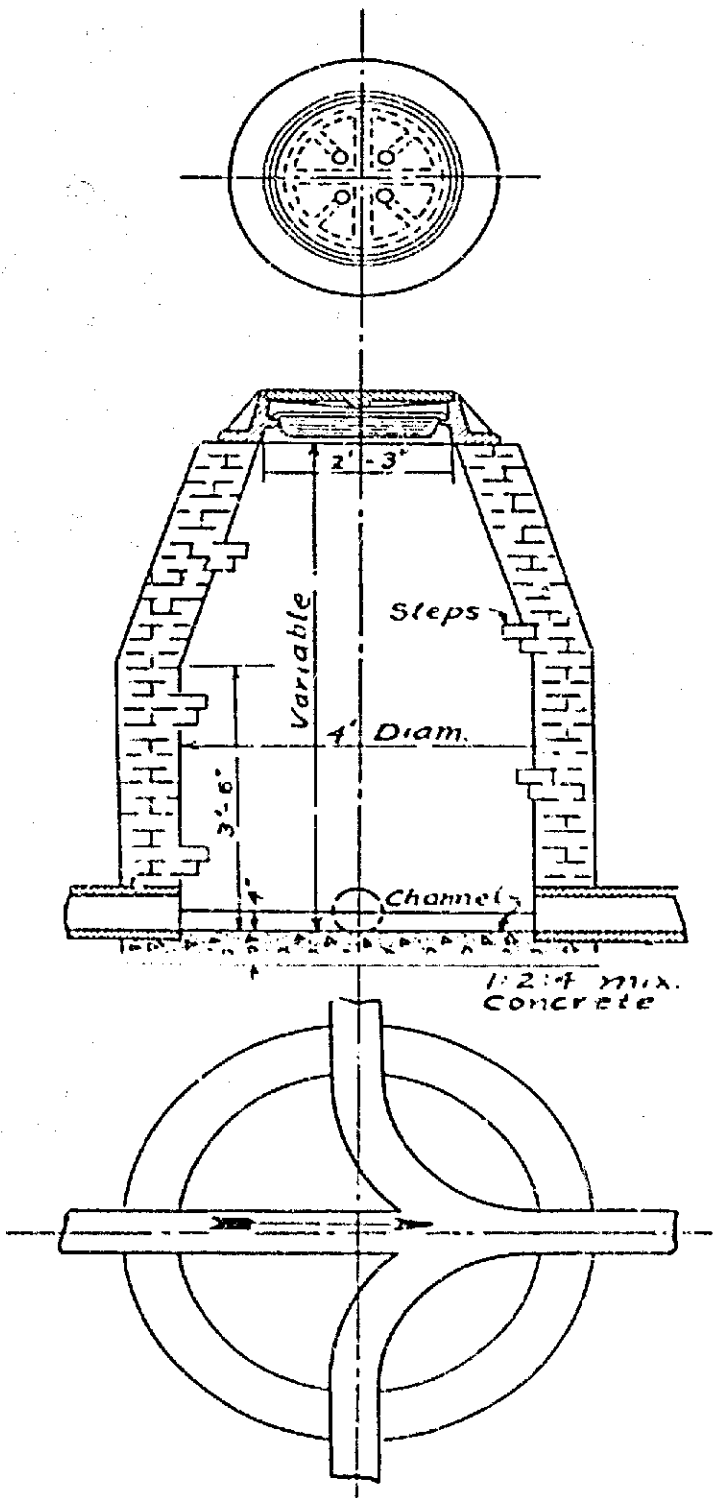
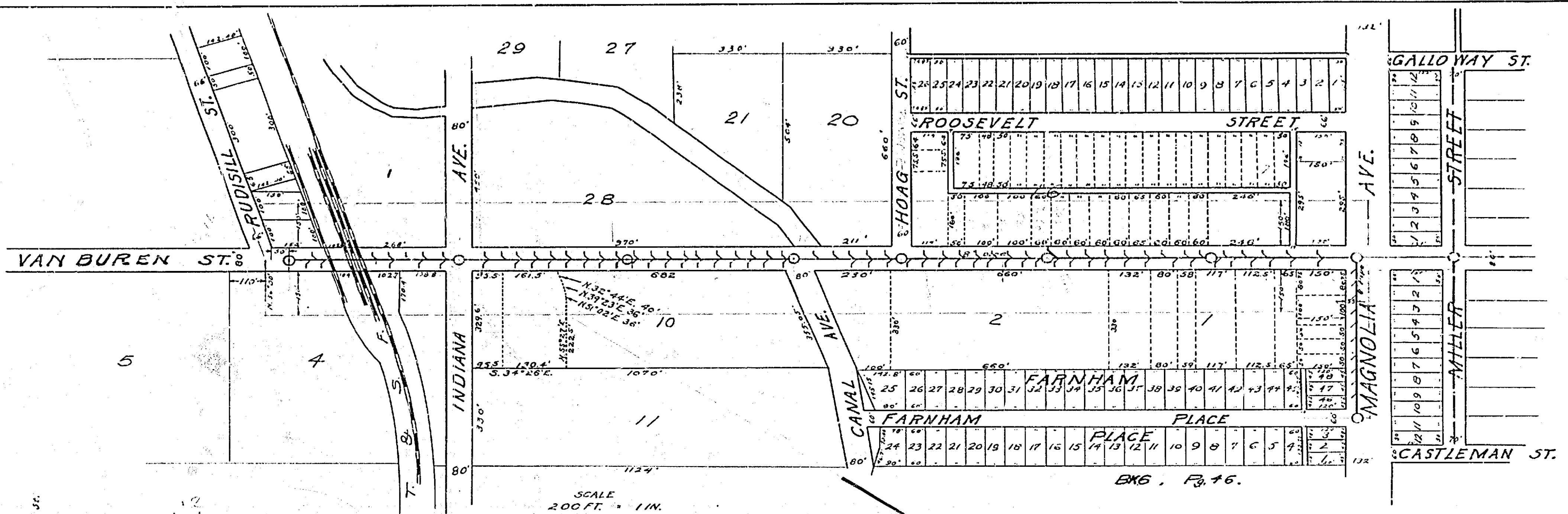


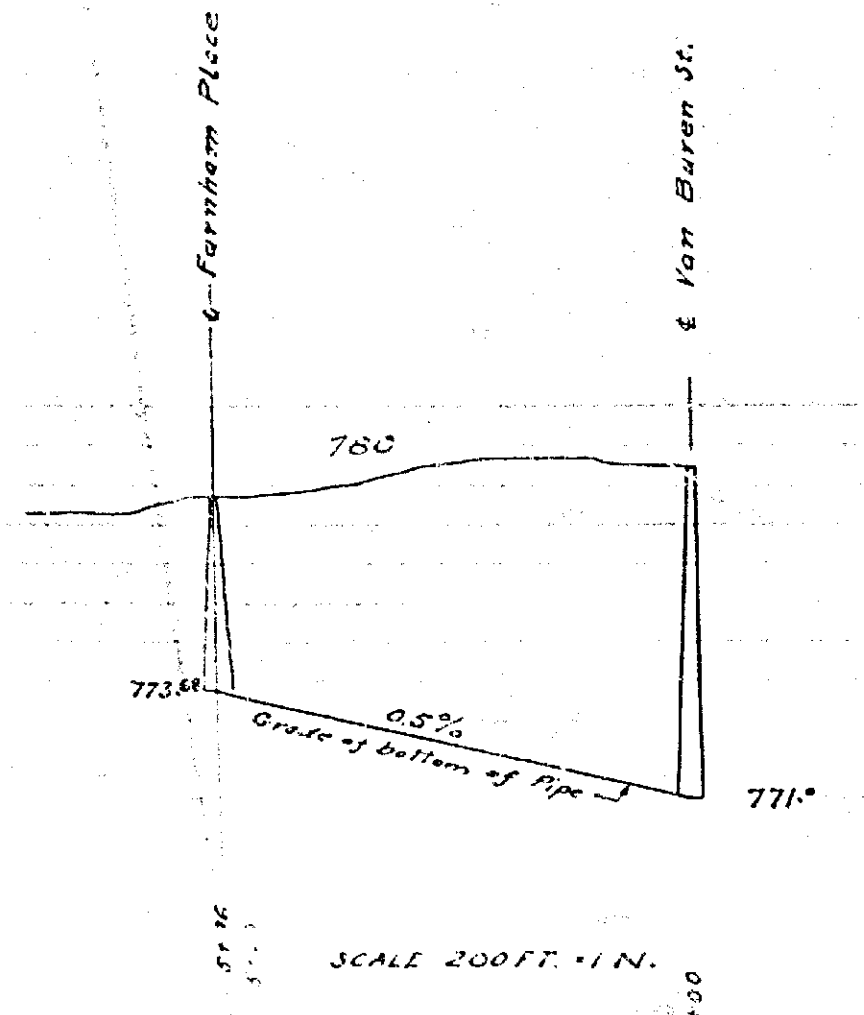
MAP SHOWING
**SEWER TO BE CONSTRUCTED IN A
PORTION OF VAN BUREN STREET & MAGNOLIA AVE**
LEE HAFZGAR CITY ENGINEER OCTOBER 1924

LEGEND
Vitrified Pipe sewer to be layed shown thus, ————
4" Y Branches shown thus, ————
Type A Manholes to be constructed shown thus, ————
Sewer already constructed shown thus, ————
District benefited, bounded by a yellow line thus, ————
Manhole already constructed shown thus, ————

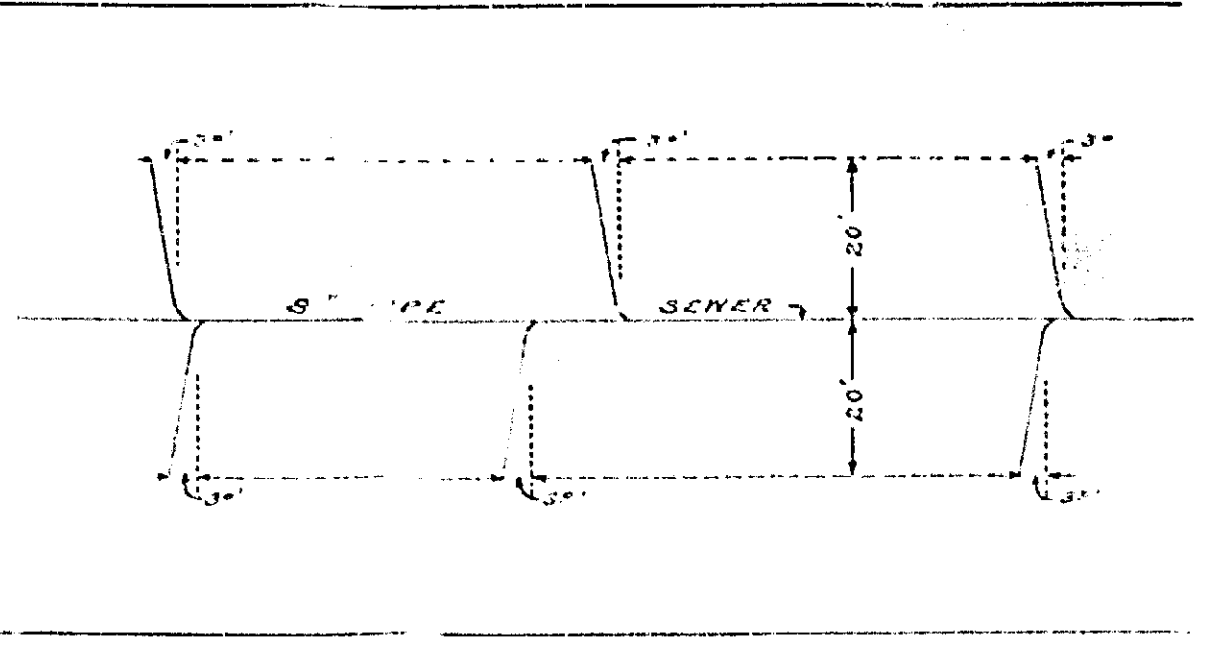
Adopted by the Mayor
and Common Council of the
City of Riverside, this 23rd
day of October, 1924.
Attest: *Lee Hafzgar*
City Clerk



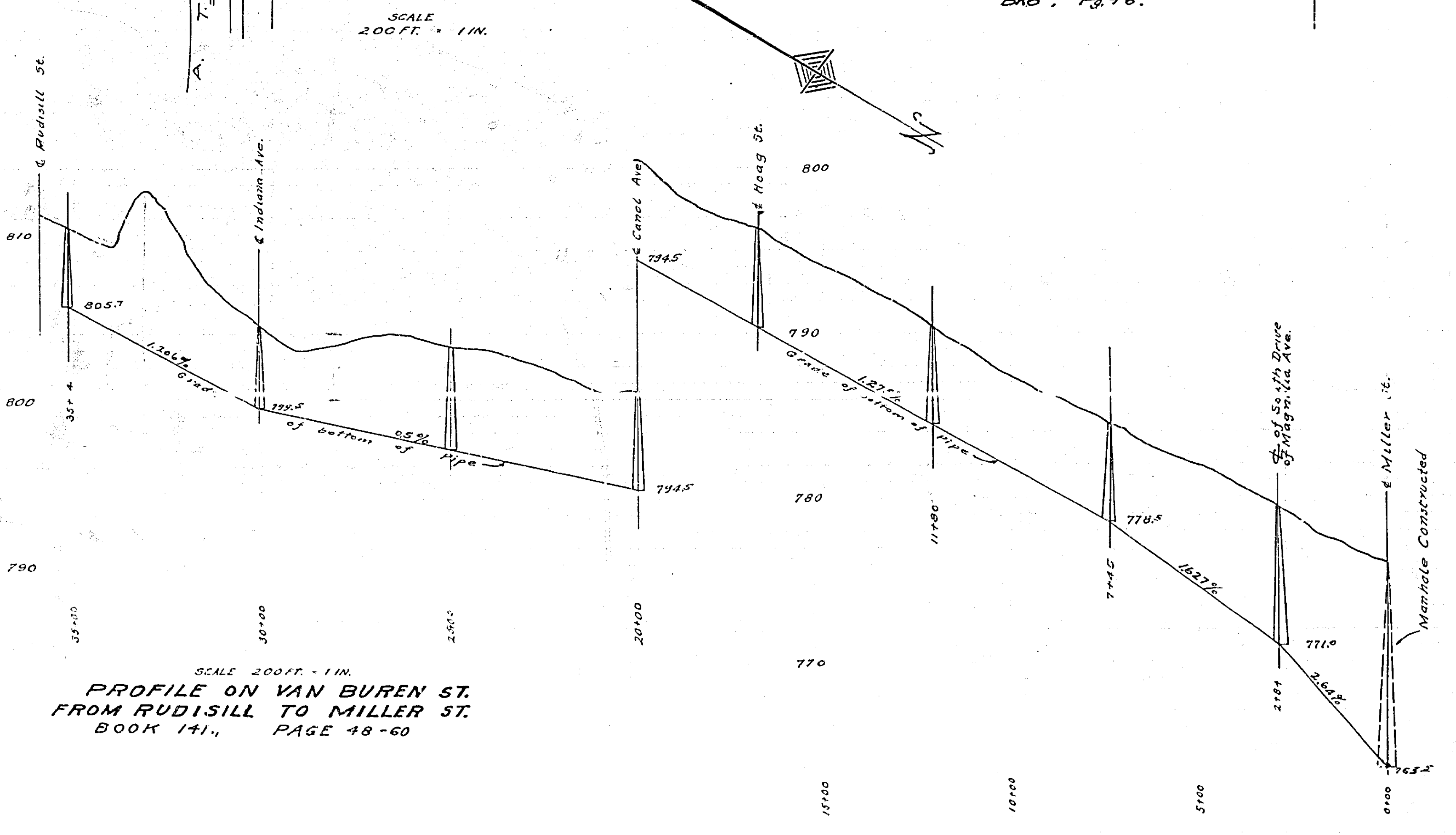
**PLAN & SECTION OF
TYPE A MANHOLE**
Scale 1/2 in. = 1 ft.



**PROFILE ON MAGNOLIA AVE
FROM FARNHAM PLACE TO
VAN BUREN ST.**
BOOK 89 PAGE 54.



DETAIL SHOWING LATERALS TO
BE LAID IN VAN BUREN STREET
FOR FUTURE HOUSE CONNECTIONS.
SCALE: 1 in. = 20 FT.



**PROFILE ON VAN BUREN ST.
FROM RUDISILL TO MILLER ST.**
BOOK 141, PAGE 48-60