




PLAN AND PROFILE  
 NO. 80A  
 FOR THE CONSTRUCTION OF TRUNK LINE SEWER IN  
**MADISON STREET**  
 ARLINGTON AVE. TO INDIANA AVE.  
 RIVERSIDE, CALIFORNIA

APPROVED *M. H. Irvine*  
 M.H. IRVINE REG. C.E. NO. 301  
 CITY ENGINEER

THESE PLANS APPROVED AND ADOPTED  
 BY THE MAYOR AND COUNCIL OF THE CITY  
 OF RIVERSIDE, STATE OF CALIFORNIA, ON  
 THIS \_\_\_\_\_ DAY OF \_\_\_\_\_ 1931  
 CITY CLERK

**LEGEND**  
 4" T-HOLE FITTING (FACED 45° ABOVE HORIZ.)  
 6" T-HOLE FITTING (FACED ON TOP OF PIPE)  
 6" CHIMNEY PIPE - STD. #14A

|          |      |
|----------|------|
| PLAN     | DATE |
| REVISION |      |
| BY       |      |
| DATE     |      |
| BY       |      |
| DATE     |      |
| BY       |      |
| DATE     |      |
| BY       |      |
| DATE     |      |

|          |      |
|----------|------|
| PROFILE  | DATE |
| REVISION |      |
| BY       |      |
| DATE     |      |
| BY       |      |
| DATE     |      |
| BY       |      |
| DATE     |      |
| BY       |      |
| DATE     |      |

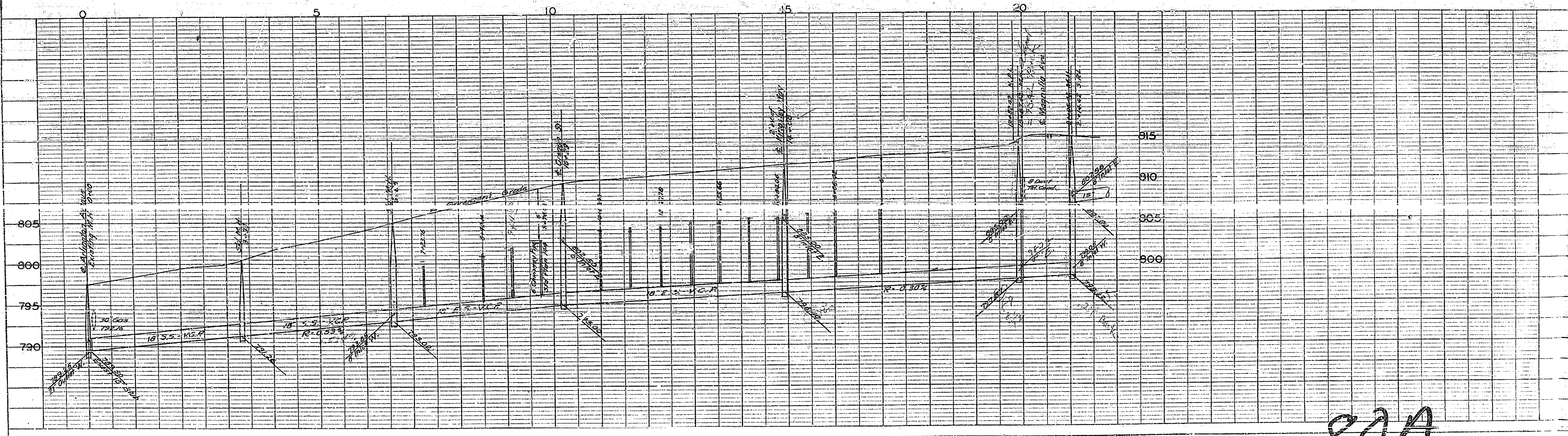
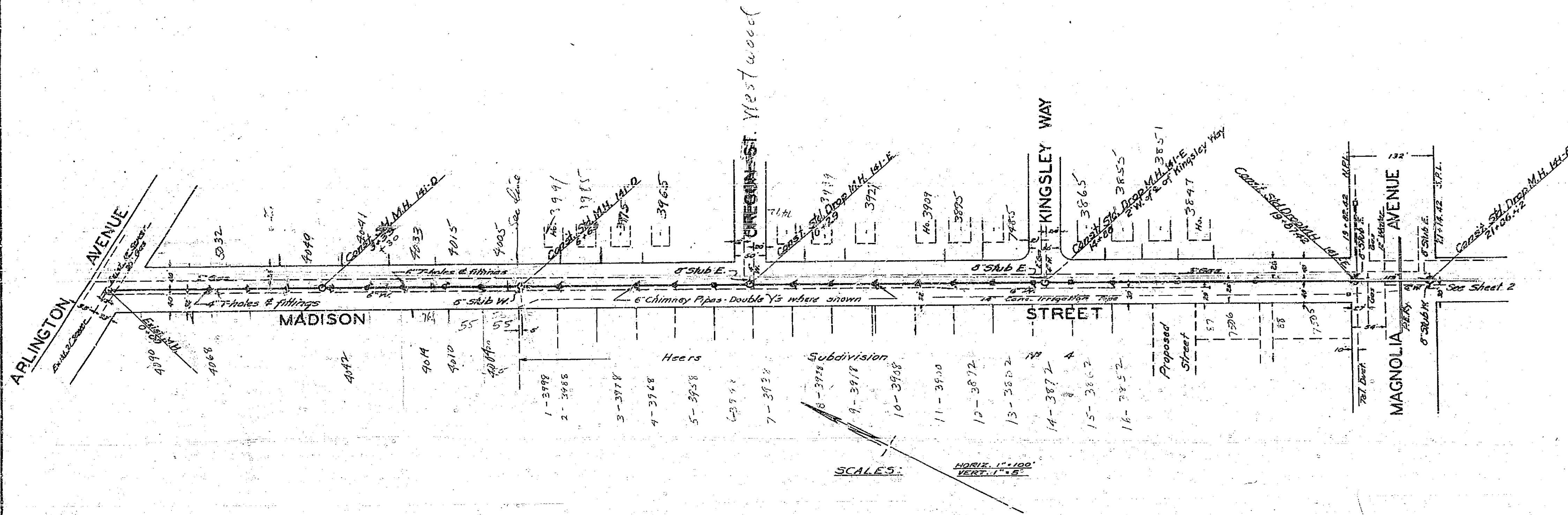
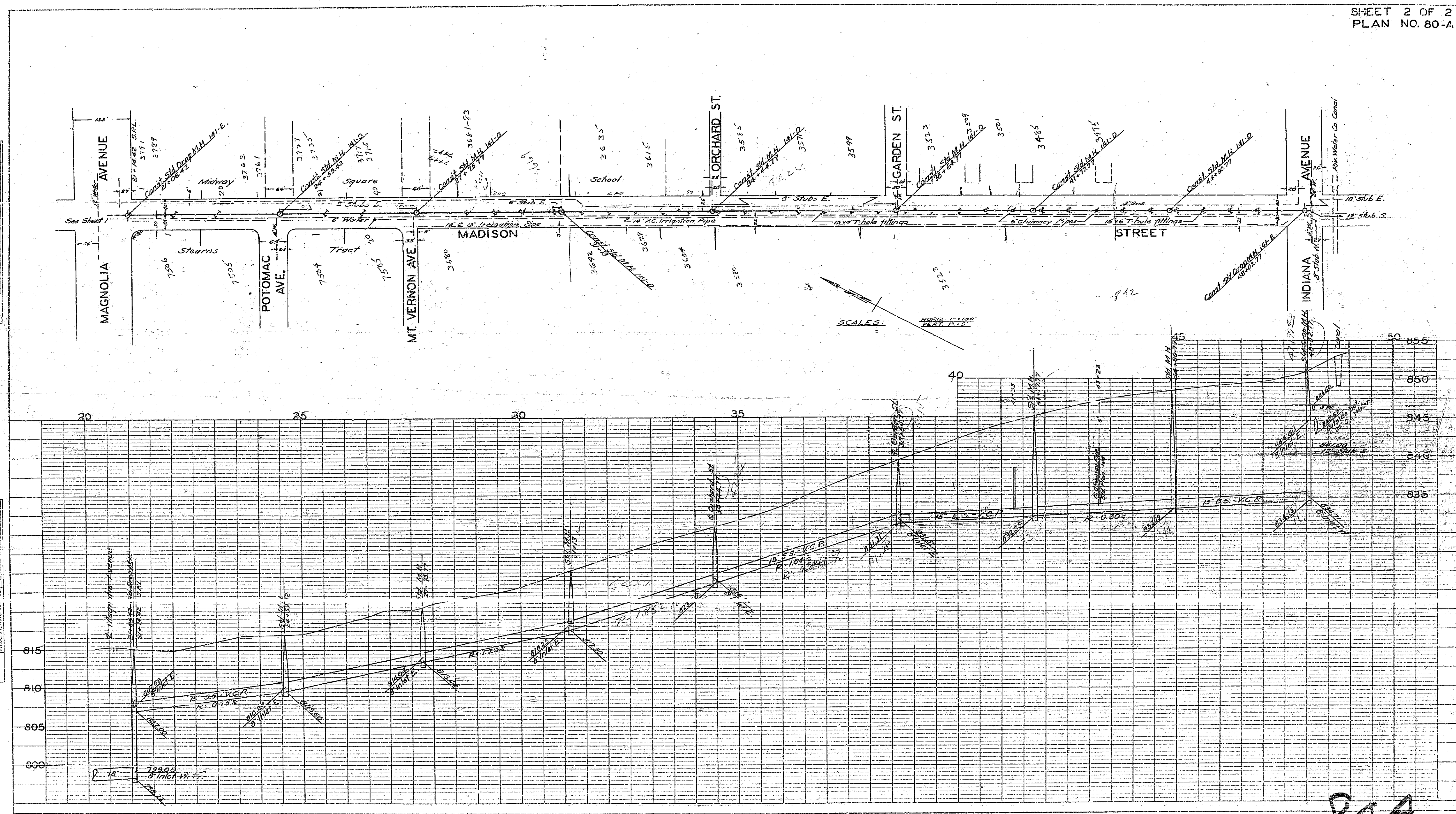


PLATE 1 - PLAN-PROFILE O. P. & A. E. STANDARD  
 KUFFEL & ESSER CO., NEW YORK  
 K. & E. CO. NO. 310-10

80A

| PLAN                              |  |
|-----------------------------------|--|
| DATE                              |  |
| BY                                |  |
| CHECKED                           |  |
| NO.                               |  |
| NOTE: BOOK IS COMPLETELY CHECKED. |  |
| REF. OF 'NY' CHECKED.             |  |

| PROFILE               |  |
|-----------------------|--|
| DATE                  |  |
| BY                    |  |
| CHECKED               |  |
| NO.                   |  |
| NOTE: GRADES CHECKED. |  |
| STRUCTURE SPOT DATA   |  |



PLATZ 1 - PLAN - PROFILE OF R.R.S. P.E. STANDARD  
K & E. CO. NO. 256-1C

80A