

DIAGRAM

EXHIBITING JURUPA AVENUE SEWER DISTRICT

IN THE CITY OF RIVERSIDE ON WHICH WORK HAS BEEN DONE UNDER MY OFFICIAL CONTRACT AS SUPERINTENDENT OF STREETS OF SAID CITY WITH R.A. ERWIN DATED SEPT. 14, 1948.

FOR THE CONSTRUCTION OF SANITARY SEWER, WYE BRANCHES, HOUSE CONNECTIONS, AND MANHOLES

AS IS MORE PARTICULARLY DESCRIBED IN SAID CONTRACT TO WHICH REFERENCE IS HEREBY MADE FOR FURTHER PARTICULARS, SAID DIAGRAM ALSO SHOWS THE RELATIVE LOCATION OF EACH LOT, PORTION OF LOT, PIECE OR PARCEL OF LAND ASSESSED FOR THE WORK DONE NUMBERED IN CIRCLES TO CORRESPOND TO THE RED INK NUMBERS IN THE ASSESSMENT.

HEREIN FIGURES NEXT TO PROPERTY LINES SHOW LENGTH OF SAID LINES IN FEET. THE MARK (L) MEANS FLET. PROPERTY LINES THAT DIFFER FROM THE RECORDED SUBDIVISIONS ARE SHOWN BY BROKEN LINES. THE DISTRICT BENEFITED IS BOUNDED BY A HEAVY DASHED LINE.





PROPERTY COVERED BY THIS ASSESSMENT IS SHOWN ON THE FOLLOWING RECORDED MAPS:

- HOLMES PLACE BOOK 7 PAGE 23 RECORDS OF RIVERSIDE COUNTY CALIF.
- POR. OF LOTS 254 AND 255 BOOK 7 PAGE 3 RECORDS OF SAN BERNARDINO COUNTY CALIF.
- SCCA LANDS
- POR. OF GOVERNMENT LOT 1
- S 1/2 OF SE 1/4 OF SE 1/4 OF SEC. 300K 2 PAGE 2 RECORDS OF SAN BERNARDINO COUNTY CALIF.
- 28 T 25 R 5 W S B B & M
- ALSO RECORDS OF SURVEY BOOK 1 PAGE 36 RECORDS OF RIVERSIDE COUNTY CALIF.
- BOOK 6 PAGE 56 RECORDS OF RIVERSIDE COUNTY CALIF.
- BOOK 7 PAGE 91 RECORDS OF RIVERSIDE COUNTY CALIF.

HEREBY CERTIFY THAT THIS ASSESSMENT DIAGRAM WAS APPROVED BY THE CITY COUNCIL OF THE CITY OF RIVERSIDE AT A MEETING HELD ON THE _____ DAY OF _____ 1948.

CITY CLERK OF THE CITY OF RIVERSIDE

HEREIN THE LEGEND OF THE DETERMINED KINDS OF WORK PERFORMED IS SHOWN AS FOLLOWS:

- STANDARD MANHOLE 
- VIT CLAY PIPE SEWER 
- VIT CLAY PIPE WYE BRANCH 
- VIT CLAY PIPE HOUSE CONNECTION 

SUPERINTENDENT OF STREETS OF THE CITY OF RIVERSIDE THE FOLLOWING IS A STATEMENT OF AMOUNTS FOR DIFFERENT KINDS OF WORK DONE BY R.A. ERWIN UNDER _____

CONTRACT DATED SEPT. 14, 1948 PURSUANT TO RESOLUTION OF INTENTION NO. 4367 ADOPTED BY THE CITY COUNCIL OF THE CITY OF RIVERSIDE ON THE 16TH DAY OF MAY 1948.

	LIST OF	QUANTITIES
4	STANDARD	MANHOLES
1190'	LIN FT.	8" VIT. CLAY PIPE
378'	LIN FT.	4" V.C.P. HOUSE CONNECTIONS
44		8' X 4" VIT. CLAY PIPE WYE BRANCHES

AT SAID CITY OF RIVERSIDE THIS _____ DAY OF _____

I HEREBY CERTIFY THAT THE ABOVE WORK WAS DONE IN ACCORDANCE WITH LINES AND GRADES FURNISHED BY ME AND THAT THE DIAGRAM OF THE ASSESSMENT DISTRICT FOR THE SAME IS CORRECT.

SUPERINTENDENT OF STREETS OF THE CITY OF RIVERSIDE

CITY ENGINEER OF THE CITY OF RIVERSIDE

RECORDED AT _____ O'CLOCK _____
THIS _____ DAY OF _____ 1948

SUPERINTENDENT OF STREETS OF THE CITY OF RIVERSIDE

811-A

Scale - 1" = 100'

See Sheet No 108

RUBIDOUX

AVENUE

33

46.5

8

CO.

LANDS

Recorded in Bk. 4 of Maps, Pg. 75
Records of Riverside County

256

253

252

Recorded in Bk. 1 of Maps, Pg. 56
Records of Riverside County

9

10

11

12

13

14

15

16

17

18

19

20

21

22

23

24

25

26

27

28

29

30

31

32

33

34

35

36

37

38

39

40

41

42

43

44

45

46

47

48

49

50

51

52

53

54

55

56

57

58

59

60

61

62

63

64

65

66

67

68

69

70

71

72

73

74

75

76

77

78

79

80

81

82

83

84

85

86

87

88

89

90

91

92

93

94

95

96

97

98

99

100

101

102

103

104

105

106

107

108

109

110

111

112

113

114

115

116

117

118

119

120

121

122

123

124

125

126

127

128

129

130

131

132

133

134

135

136

137

138

139

140

141

142

143

144

145

146

147

148

149

150

151

152

153

154

155

156

157

158

159

160

161

162

163

164

165

166

167

168

169

170

171

172

173

174

175

176

177

178

179

180

181

182

183

184

185

186

187

188

189

190

191

192

193

194

195

196

197

198

199

200

201

202

203

204

205

206

207

208

209

210

211

212

213

214

215

216

217

218

219

220

221

222

223

224

225

226

227

228

229

230

231

232

233

234

235

236

237

238

239

240

241

242

243

244

245

246

247

248

249

250

251

252

253

254

255

256

257

258

259

260

261

262

263

264

265

266

267

268

269

270

271

272

273

274

275

276

277

278

279

280

281

282

283

284

285

286

287

288

289

290

291

292

293

294

295

296

297

298

299

300

301

302

303

304

305

306

307

308

309

310

311

312

313

314

315

316

317

318

319

320

321

322

323

324

325

326

327

328

32



Scale - 1" = 100'

SHEET 4 TOTAL 5

JURUPA

See Sheets No 114 Arch 115

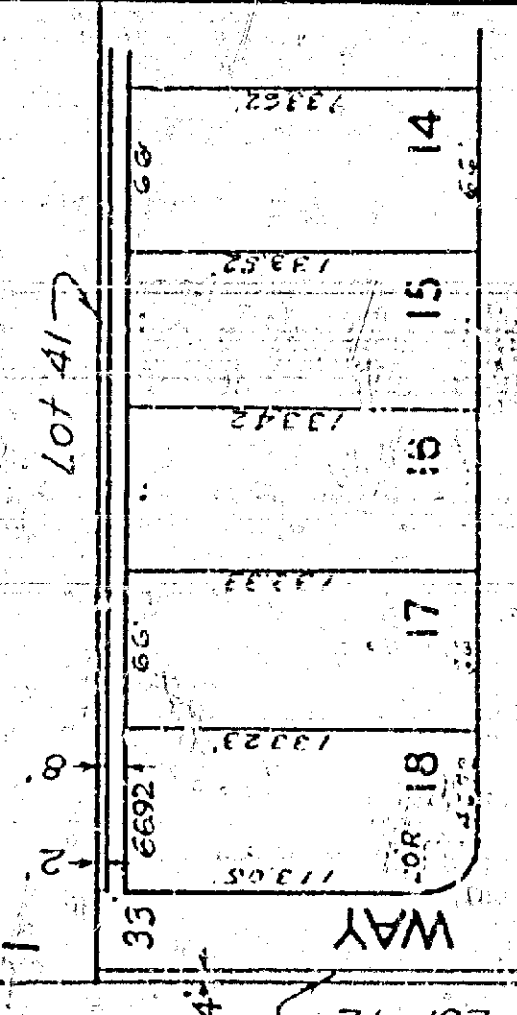
AVENUE

FRACTIONAL LOT 2 SEC. 28

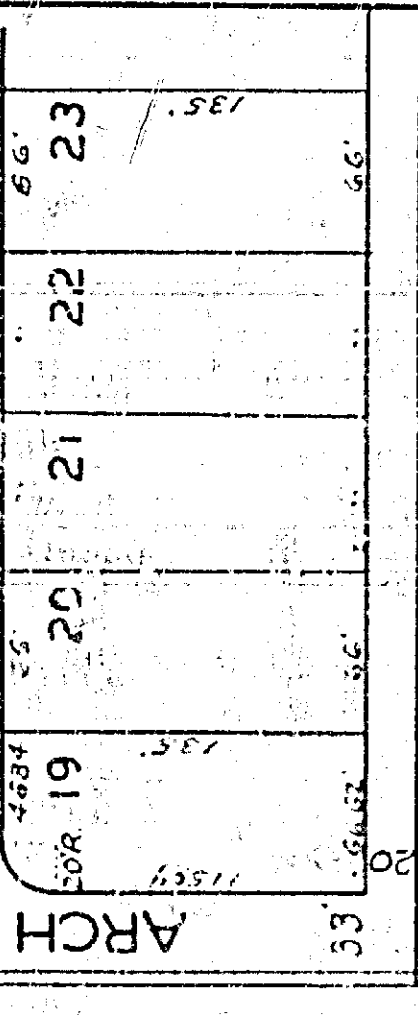
PORTION FRACTIONAL LOT 11
4 1/4 CP HOUSE CONNECTION
SEC. 28

North Line Sec. 33

Sewer District Boundary



COVER ST.



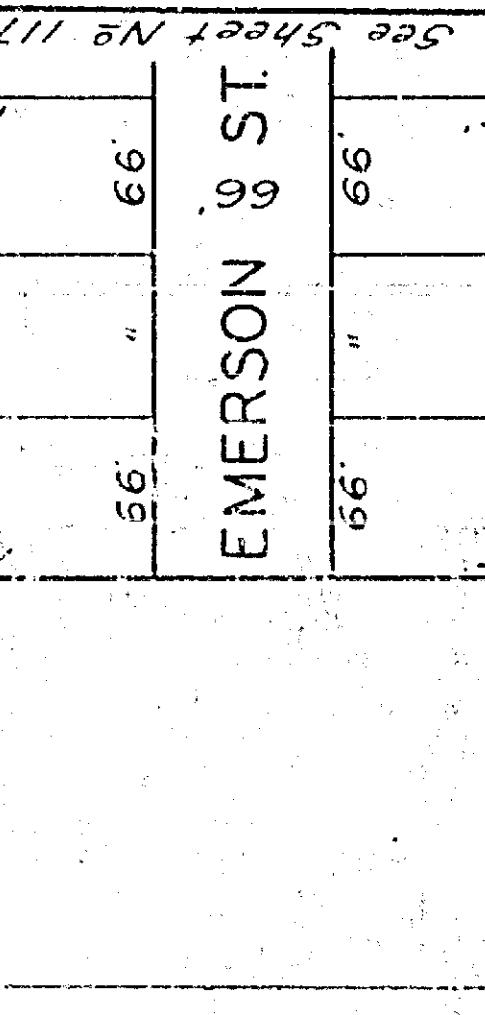
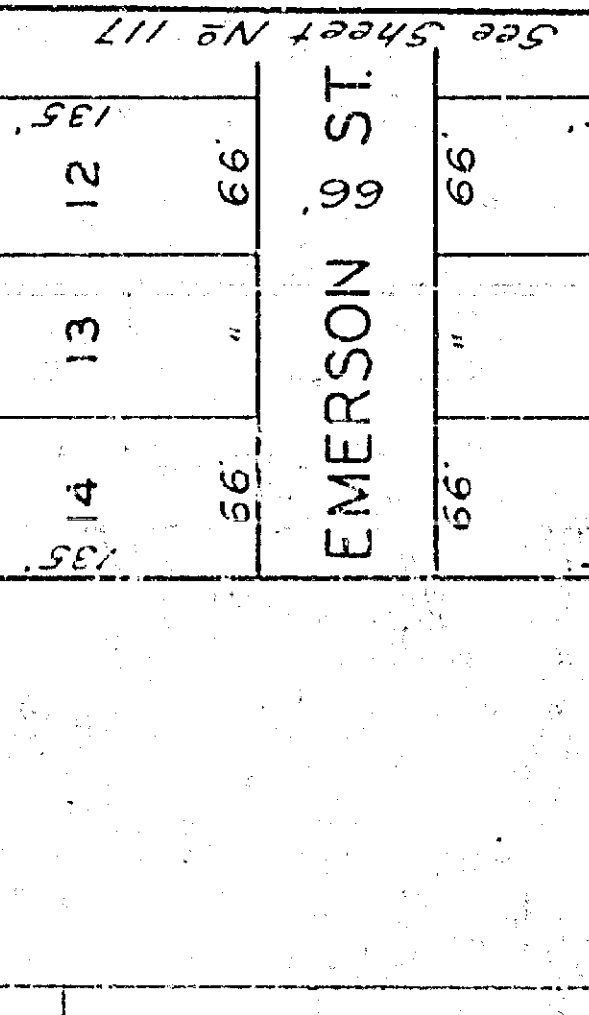
N.W.⁴ OF NE.⁴ SEC. 33

T.2 S. R.5 W. S.B.B.M.

568.45

642.84

114.18



See Sheet No 119

See Sheet No 117

See Section 33

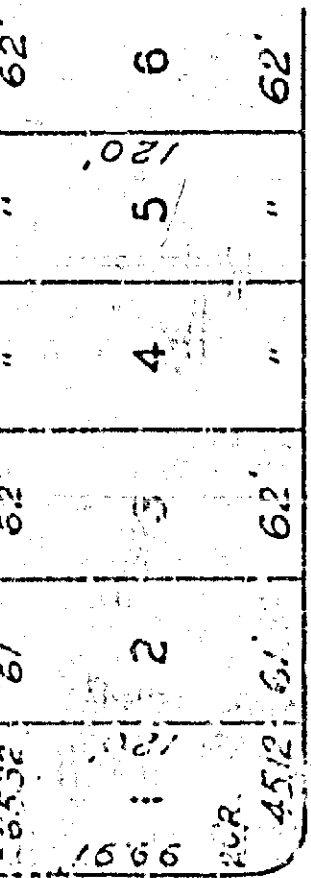
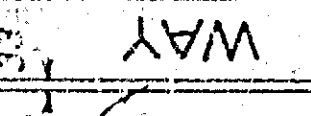
786.46

786.46

786.46

786.46

Lot 17



110.52

276.54

332.34

276.54

332.34

66

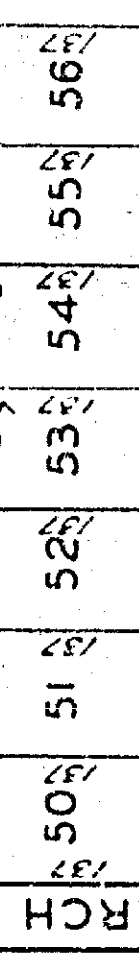
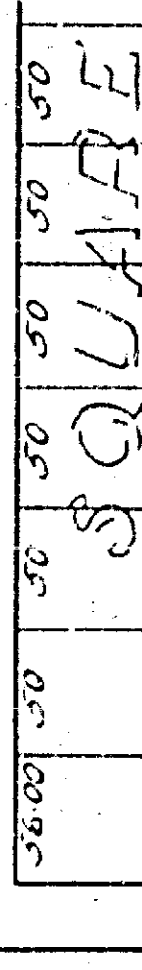
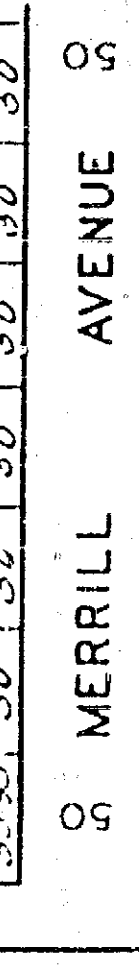
DEWEY

AVENUE

88

PORTION OF SW.⁴ OF NE.⁴ SEC. 33

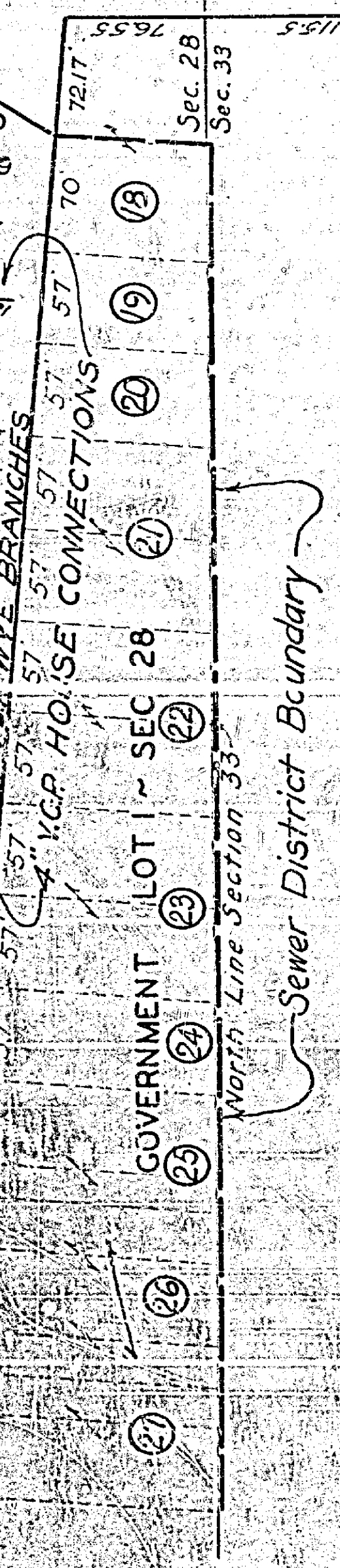
88



See Sheet No 150

811-A (118)

See Sheets No 113 and 114



AVENUE

21	22	23	24	25	26	27	28	29	30	31	32	33	34	35	36	37	38
180	180	180	180	180	180	180	180	180	180	180	180	180	180	180	180	180	180
GROFTHOLDT																	
Recorded in Bk 7 of Maps, Pg 51 Records of Riverside County																	
50	50	50	50	50	50	50	50	50	50	50	50	50	50	50	50	50	50

35	36	37	38
134.90	134.90	134.90	134.90
STEVENSON			
Recorded in Bk 20 Pg 85 Records of Riverside County			
66	66	66	66

STREET

39	40
134.90	134.90
EMERSON	
66	66

18	19	20	21	22	23	24	25	26	27	28
114.90	114.90	114.90	114.90	114.90	114.90	114.90	114.90	114.90	114.90	114.90
HYSON										
Recorded in Bk 22 Pg 1 Records of Riverside Co.										
66	66	66	66	66	66	66	66	66	66	66

AVENUE

20	21	22	23	24	25	26	27	28	29	30
134.90	134.90	134.90	134.90	134.90	134.90	134.90	134.90	134.90	134.90	134.90
TRACT No 2										
Recorded in Bk 22 Page 22 Records of Riverside Co.										
62	62	62	62	62	62	62	62	62	62	62

STREET

31	32	33	34
115.10	115.10	115.10	115.10
TRACT No 1			
Recorded in Bk 22 Pg 1 Records of Riverside Co.			
66	66	66	66

31	32	33	34	35	36	37	38	39	40
118.35	118.35	118.35	118.35	118.35	118.35	118.35	118.35	118.35	118.35
GARDENA DRIVE									
62	62	62	62	62	62	62	62	62	62

AVENUE

41	42	43	44	45	46	47	48	49	50
128.88	128.88	128.88	128.88	128.88	128.88	128.88	128.88	128.88	128.88
PALM HEIGHTS No 4									
Recorded in Bk 15 of Maps, Pg 89 Records of Riverside County									
60	60	60	60	60	60	60	60	60	60

PORTION OF NW 4 OF NW 1/4 SEC. 34

20	21	22	23	24	25	26	27	28	29	30
134.90	134.90	134.90	134.90	134.90	134.90	134.90	134.90	134.90	134.90	134.90
GARDENA DRIVE										
62	62	62	62	62	62	62	62	62	62	62

AVENUE

25	26	27	28	29	30	31	32	33	34
128.88	128.88	128.88	128.88	128.88	128.88	128.88	128.88	128.88	128.88
HEPPMAN BAILS									
Recorded in Bk 15 of Maps, Pg 12 Records of Riverside County									
60	60	60	60	60	60	60	60	60	60

9	10	11	12	13	14	15	16	17	18	19	20	21	22	23	24	25	26	27
136.24	136.24	136.24	136.24	136.24	136.24	136.24	136.24	136.24	136.24	136.24	136.24	136.24	136.24	136.24	136.24	136.24	136.24	136.24
VENETIAN																		
Recorded in Bk 13 of Maps, Pg 36 Records of Riverside County																		
60	60	60	60	60	60	60	60	60	60	60	60	60	60	60	60	60	60	60

DEWEY

28	29	30	31	32	33	34	35	36	37	38	39	40	41	42	43	44	45	46	47	48	49	50	
137.17	137.17	137.17	137.17	137.17	137.17	137.17	137.17	137.17	137.17	137.17	137.17	137.17	137.17	137.17	137.17	137.17	137.17	137.17	137.17	137.17	137.17	137.17	
SQUARE																							
Recorded in Bk 15 of Maps, Pg 33 Records of Riverside County																							
60	60	60	60	60	60	60	60	60	60	60	60	60	60	60	60	60	60	60	60	60	60	60	60

56	57	58	59	60	61	62	63	64	65	66	67	68	69	70	71	72	73	74	75
137.17	137.17	137.17	137.17	137.17	137.17	137.17	137.17	137.17	137.17	137.17	137.17	137.17	137.17	137.17	137.17	137.17	137.17	137.17	137.17
MERRILL																			
Recorded in Bk 15 of Maps, Pg 33 Records of Riverside County																			
60	60	60	60	60	60	60	60	60	60	60	60	60	60	60	60	60	60	60	60

AVENUE

94	95	96	97	98	99	100	101	102	103	104	105	106	107	108	109	110	111	112	113	114	115	116	117	118	119	120	
128.88	128.88	128.88	128.88	128.88	128.88	128.88	128.88	128.88	128.88	128.88	128.88	128.88	128.88	128.88	128.88	128.88	128.88	128.88	128.88	128.88	128.88	128.88	128.88	128.88	128.88	128.88	
PALM HEIGHTS																											
Recorded in Bk 15 of Maps, Pg 33 Records of Riverside County																											
60	60	60	60	60	60	60	60	60	60	60	60	60	60	60	60	60	60	60	60	60	60	60	60	60	60	60	

AVENUE

94	95	96	97	98	99	100	101	102	103	104	105	106	107	108	109	110	111	112	113	114	115	116	117	118	119	120	
128.88	128.88	128.88	128.88	128.88	128.88	128.88	128.88	128.88	128.88	128.88	128.88	128.88	128.88	128.88	128.88	128.88	128.88	128.88	128.88	128.88	128.88	128.88	128.88	128.88	128.88	128.88	
TRACT																											
Recorded in Bk 15 of Maps, Pg 12 Records of Riverside County																											
60	60	60	60	60	60	60	60	60	60	60	60	60	60	60	60	60	60	60	60	60	60	60	60	60	60	60	