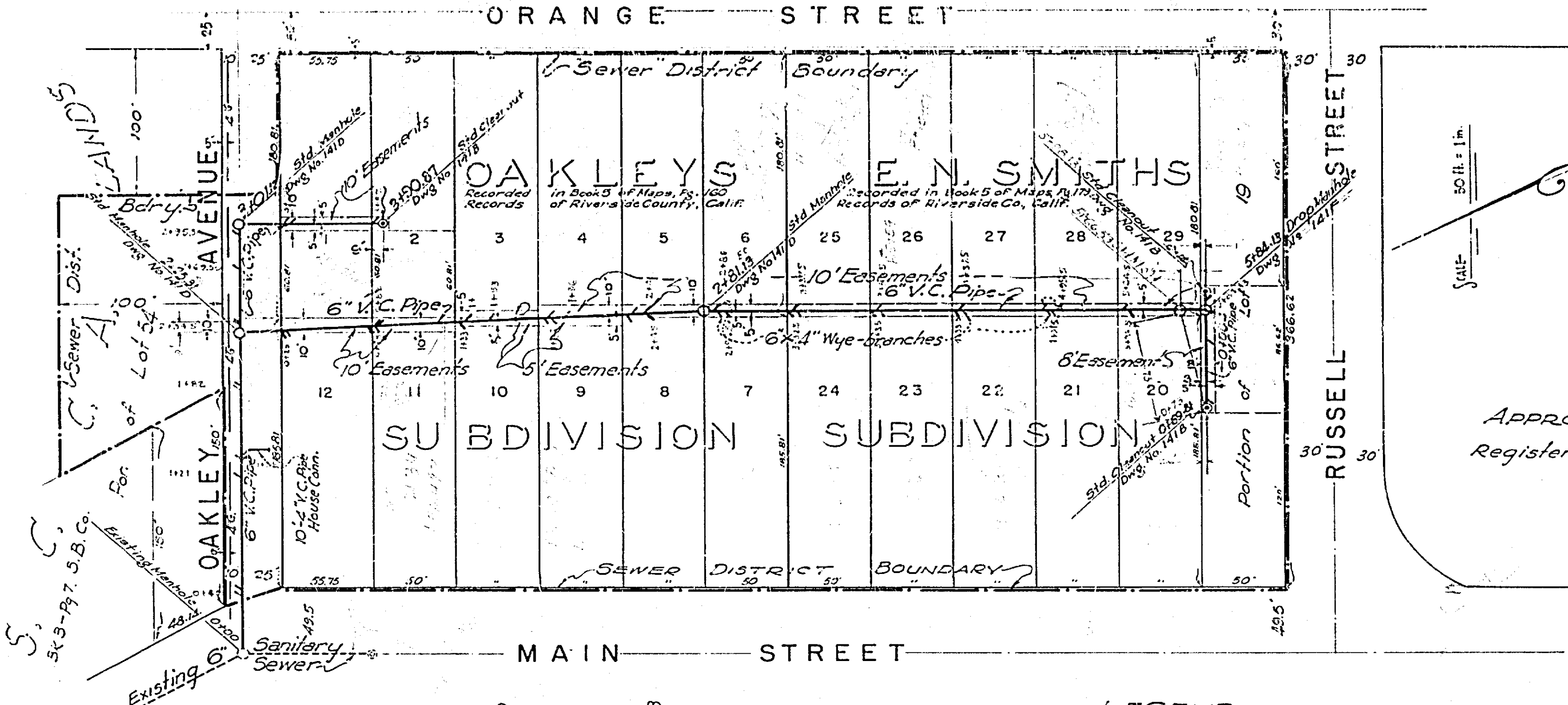


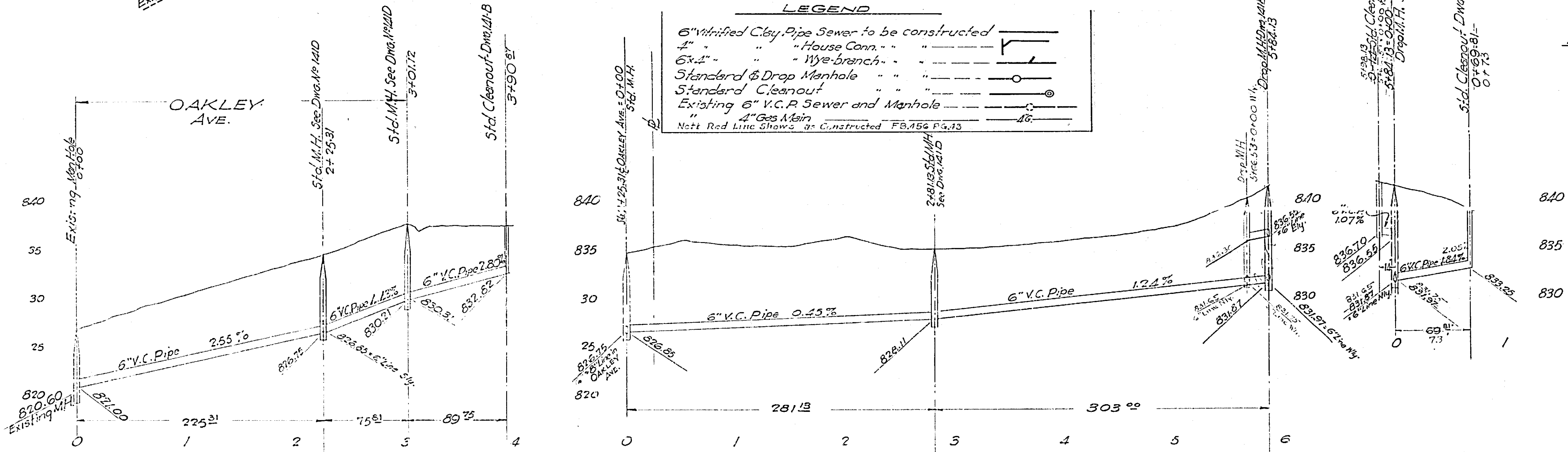
55
11
11
82
2.8
11
11
55



PLAN & PROFILE No. 813
 SHOWING SEWER FOR
OAKLEY'S & E.N. SMITH'S SUBDIVISIONS
 - SEWER DISTRICT -
 CITY ENGINEERING DEPT. SEP. 2 1947
 RIVERSIDE CALIFORNIA

APPROVED *M. H. Justice*
 CITY ENGINEER
 Registered CIVIL ENGINEER No. 3011

These PLANS APPROVED and ACCEPTED
 by the MAYOR and the COUNCIL of the
 CITY OF RIVERSIDE
 STATE OF CALIFORNIA - on this 2nd day of June,
 1948
Robert Smith
 CITY CLERK



LEGEND

6" Vitrified Clay Pipe Sewer to be constructed	
4" " " " " House Conn. " " "	
6"x4" " " " " Wye-branch. " " "	
Standard & Drop Manhole " " "	
Standard Cleanout " " "	
Existing 6\" V.C.P. Sewer and Manhole	
4\" Gas Main	
Note: Red Line Shows as Constructed F.B. 416 Pg. 13	

F.B. 416 - pg. 6

813

55
11
82
2.8
11
11
55