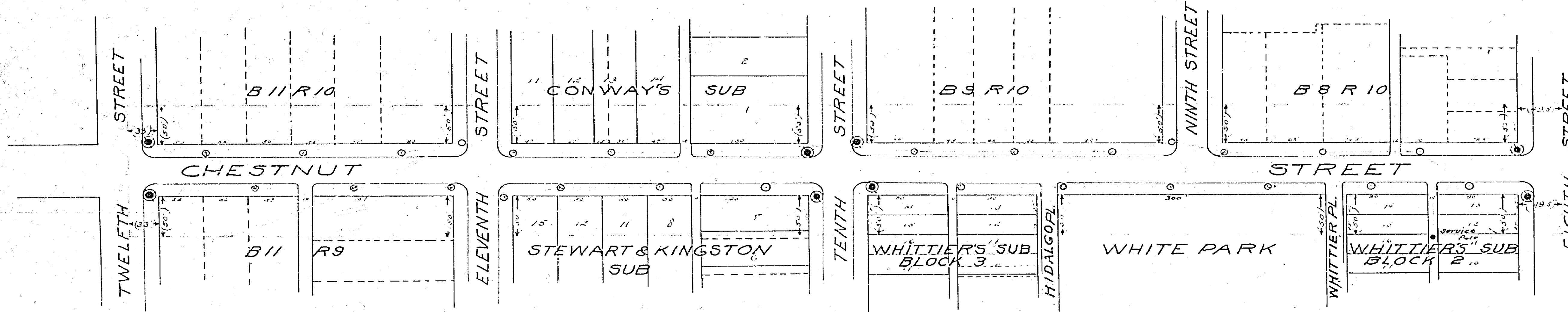


Scale 1 in. = 60 Ft.

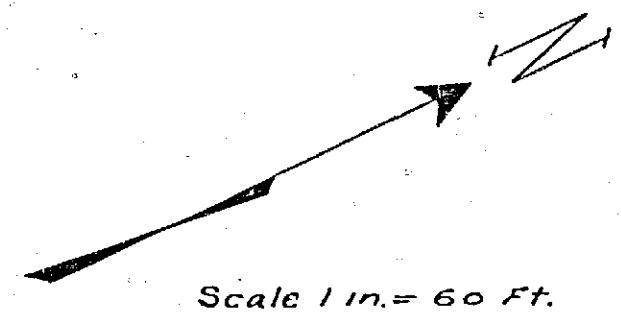
MAP SHOWING PROPOSED
ORNAMENTAL ELECTRIC LIGHTING SYSTEM
TO BE INSTALLED ON
CHESTNUT STREET
LEE NAFZGAR CITY ENGINEER 1924



LEGEND
Electric light posts already installed are shown thus: ●
One light ornamental light posts to be installed shown thus: ○
Conduits to be layed shown thus: - - - - -

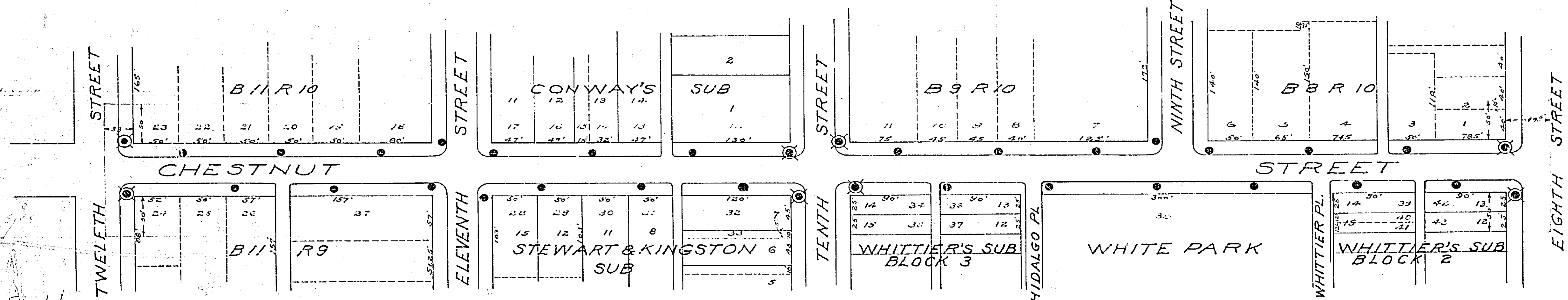
817

Scale with No 817



Scale 1 in. = 60 Ft.

MAP SHOWING PROPOSED
ORNAMENTAL ELECTRIC LIGHTING SYSTEM
TO BE INSTALLED ON
CHESTNUT STREET
LEE NAFZGAR CITY ENGINEER 1924



LEGEND
One light ornamental Light posts installed shown thus: ●
District benefited by the construction of this lighting system and to be assessed to pay the costs of the same is bounded by a violet line, thus: - - - - -

817A