

35.

13

11

8.2

2.8

11

11

35

27

11

11

8.5

8.5

11

17

22

MAP No. 515

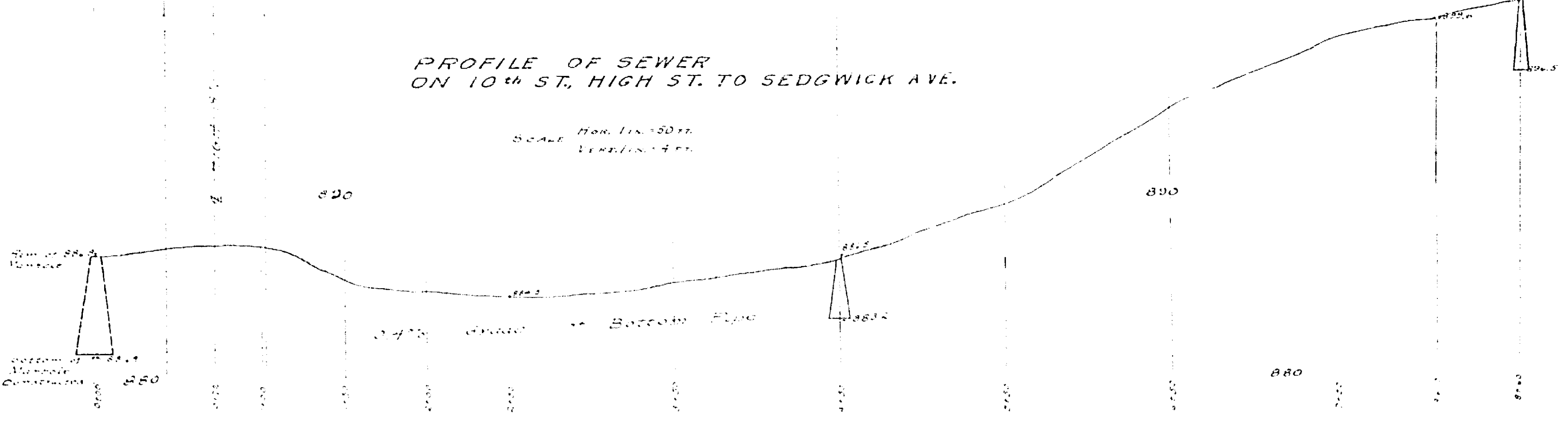
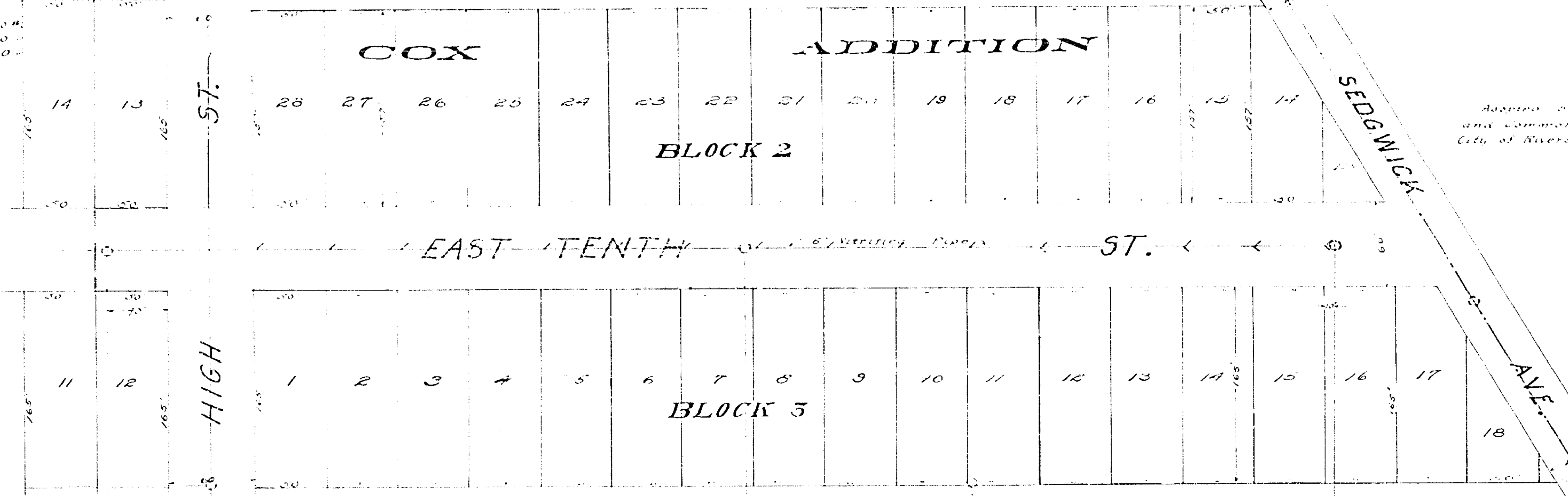
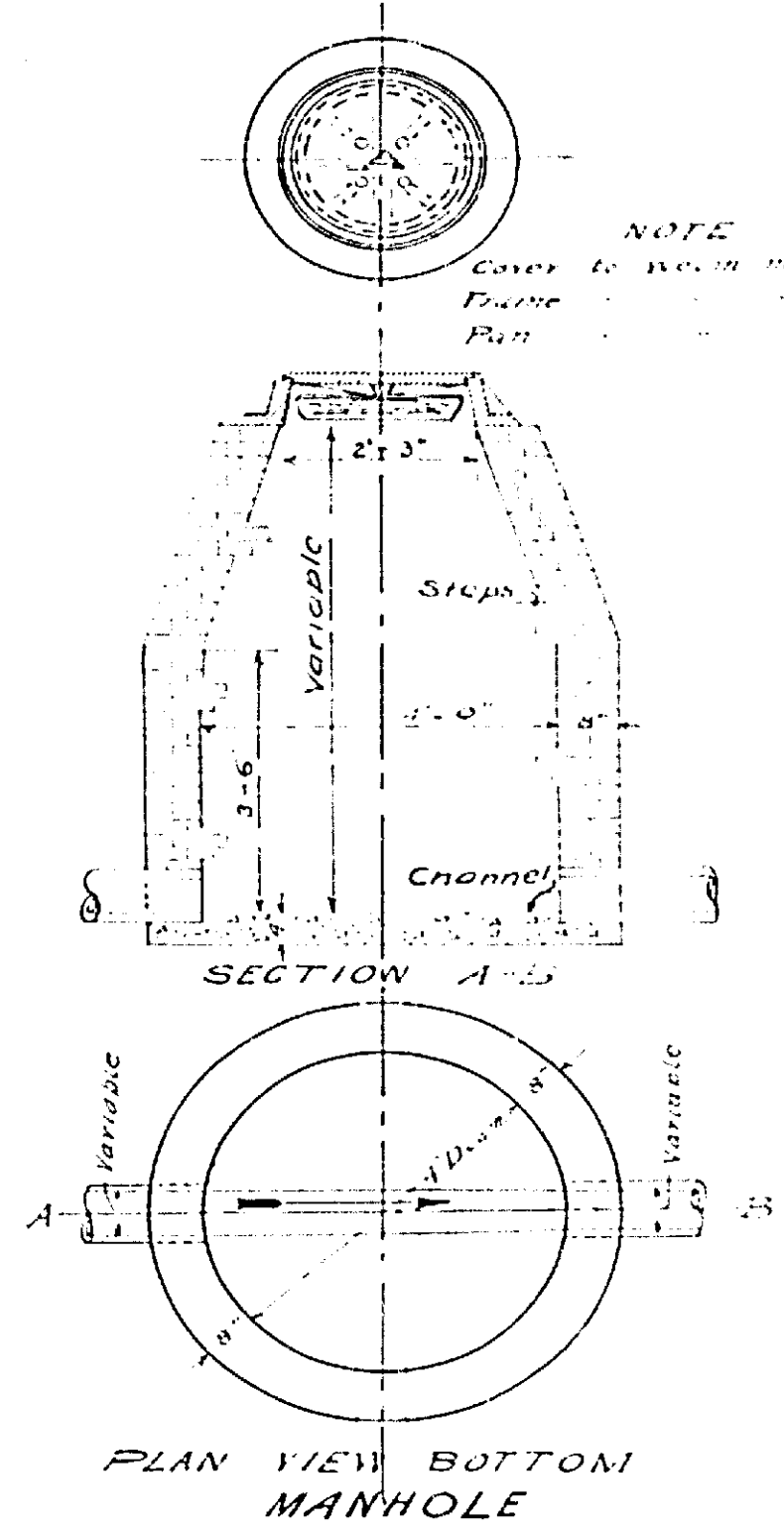
MAP SHOWING SEWER TO BE CONSTRUCTED IN A PORTION OF EAST TENTH STREET

L.L.E. NAFZGAR CITY ENGINEER JANUARY 1925.

LEGEND

- Velocity Pipe sewer to be laid, shown thus: ————
- Manhole to be laid, shown thus: ————
- Type A Manhole to be constructed shown thus: ————
- Sewer already constructed shown thus: ————
- Manhole already constructed shown thus: ————
- District Bounded by yellow line thus: ————

Approved by the Mayor
and Common Council of the
City of Riverside this 20th day of Jan 1925
Attest: *[Signature]*
City Clerk



8/12

MAP No. 515