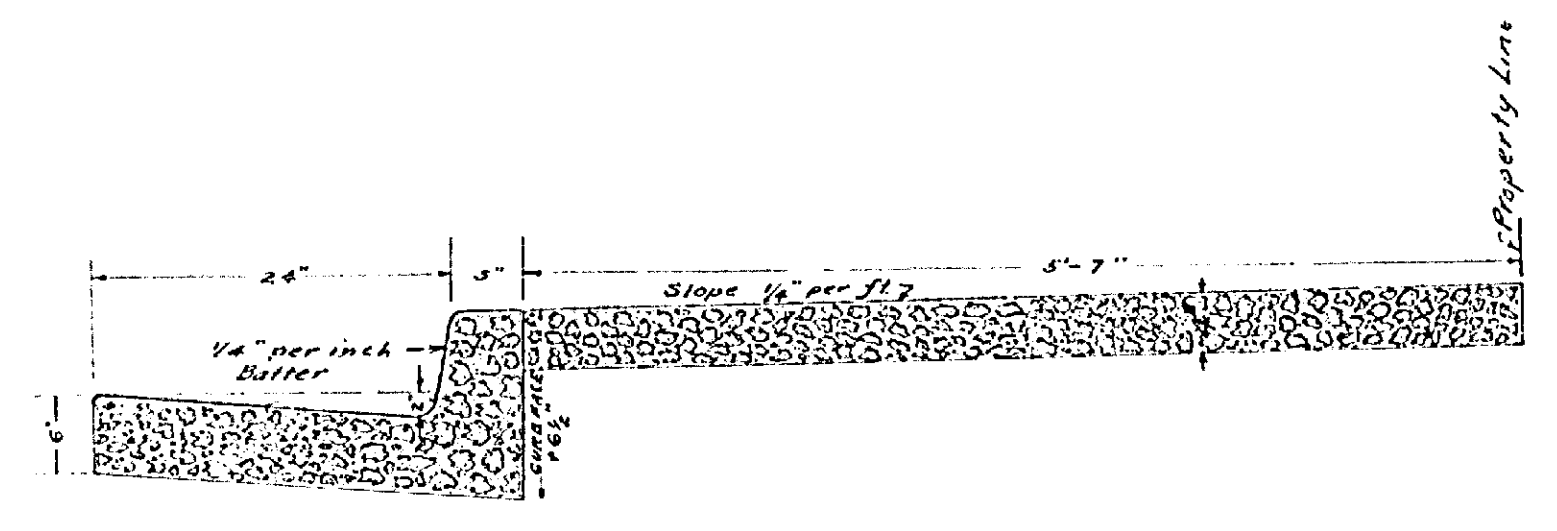
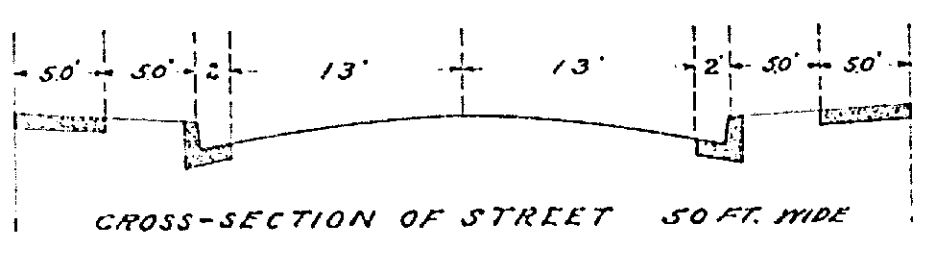
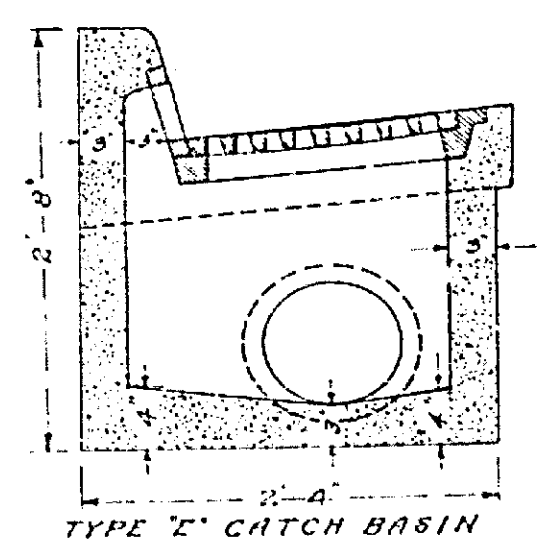
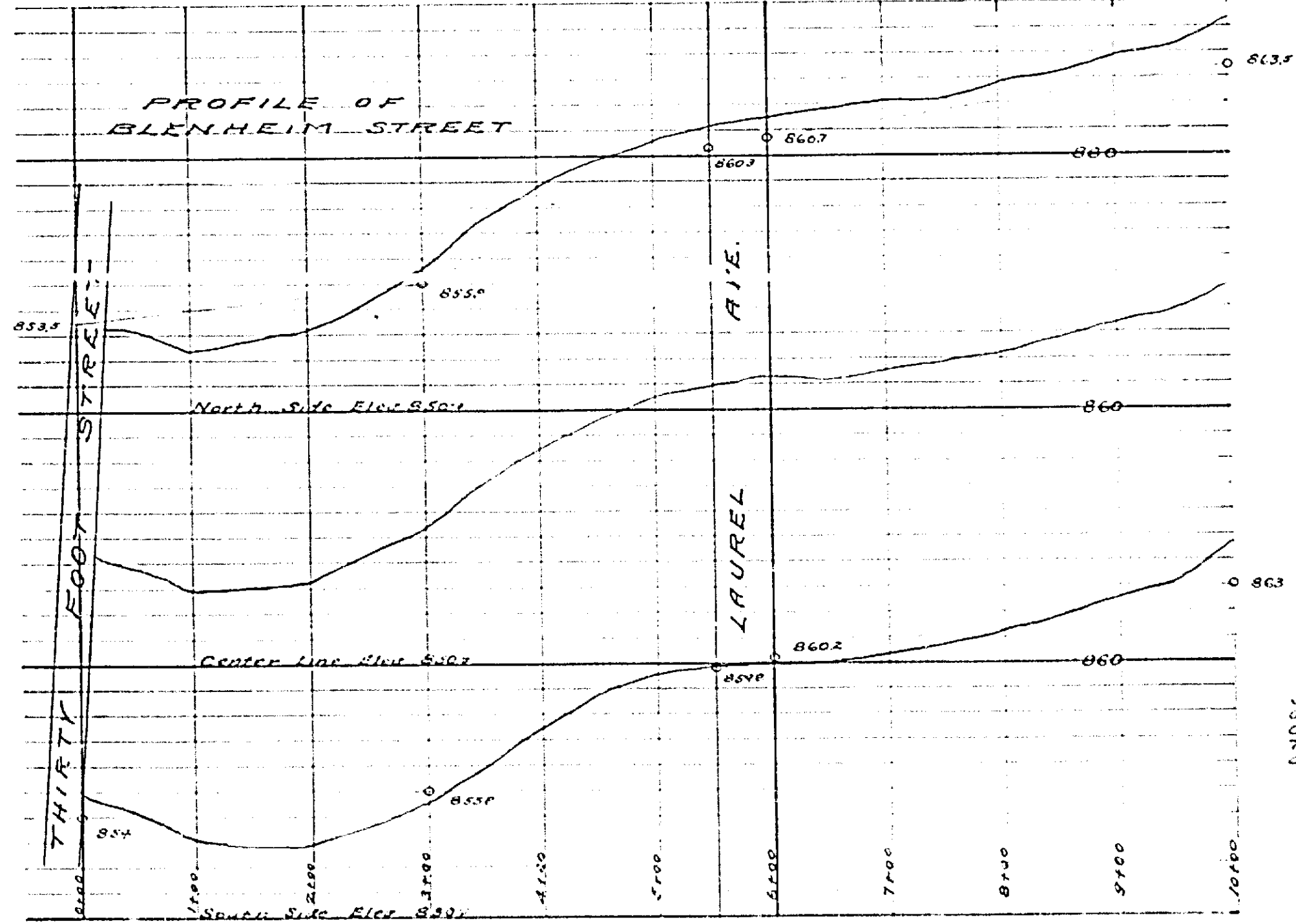
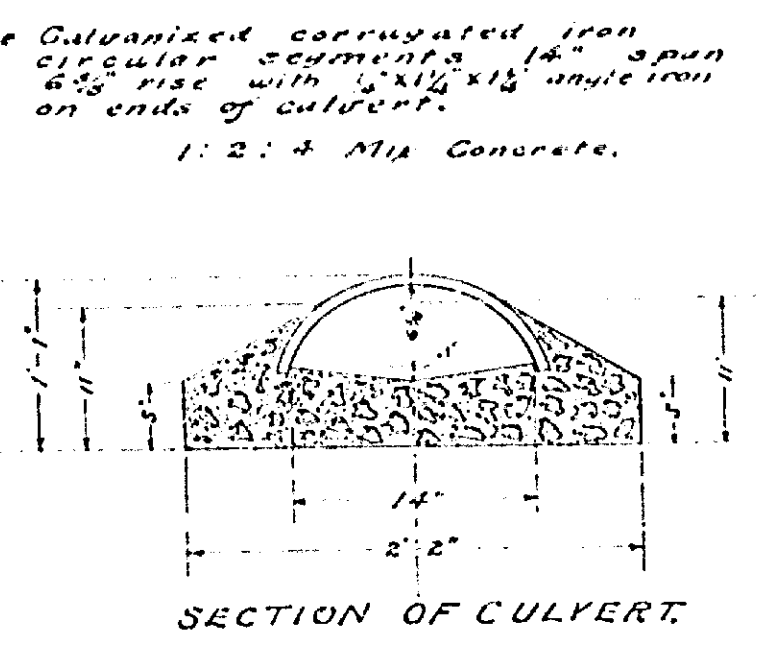
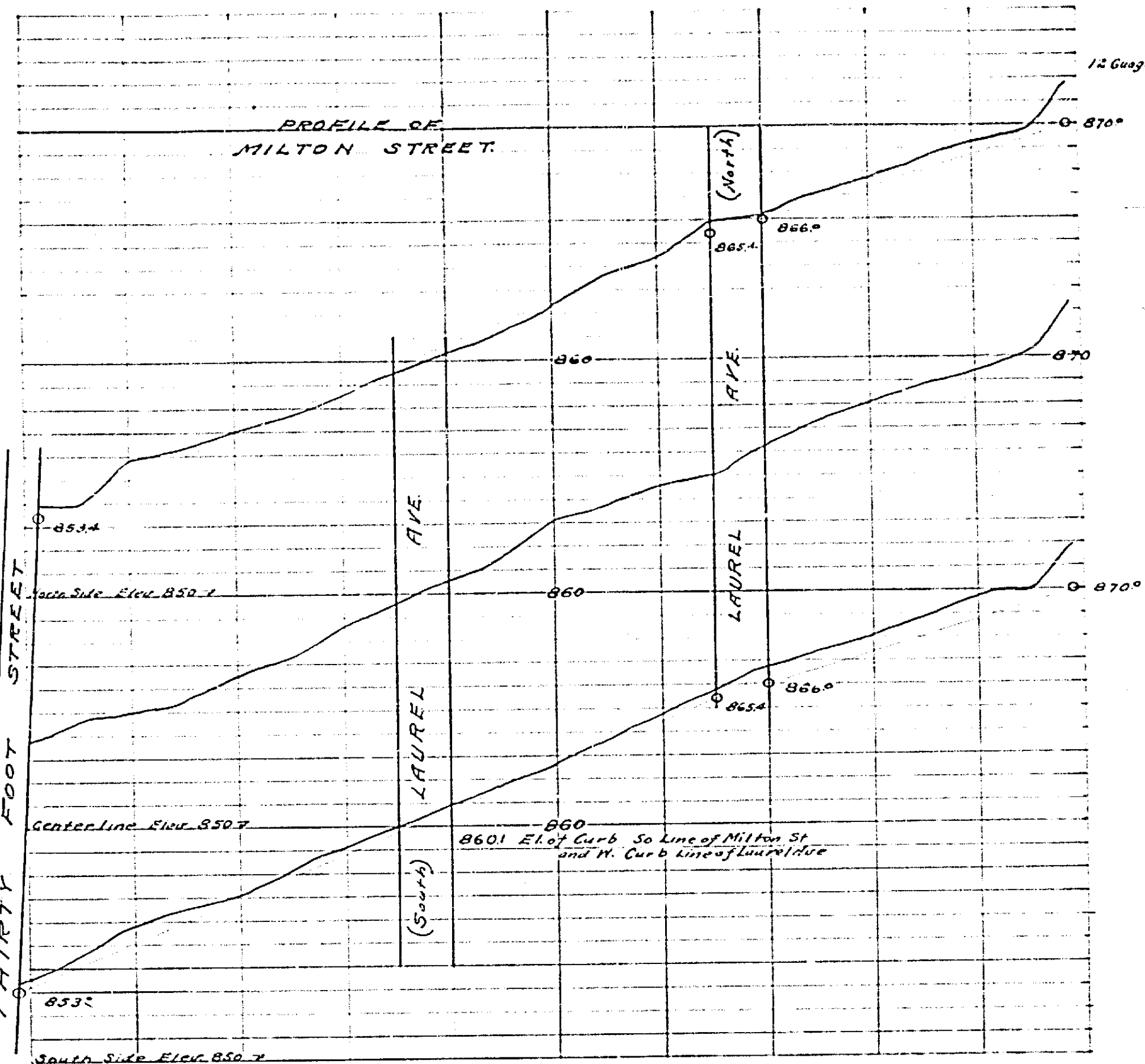
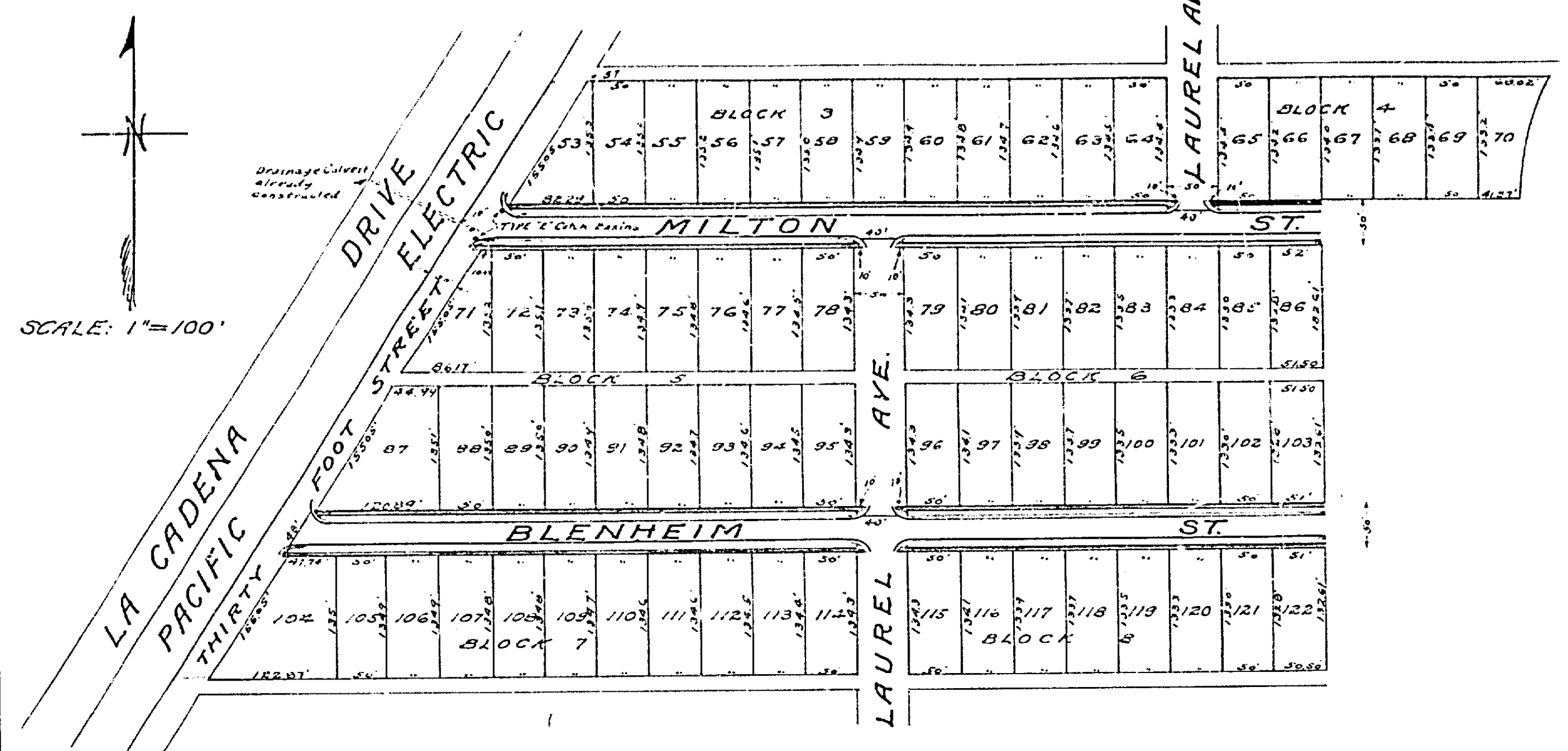


55.

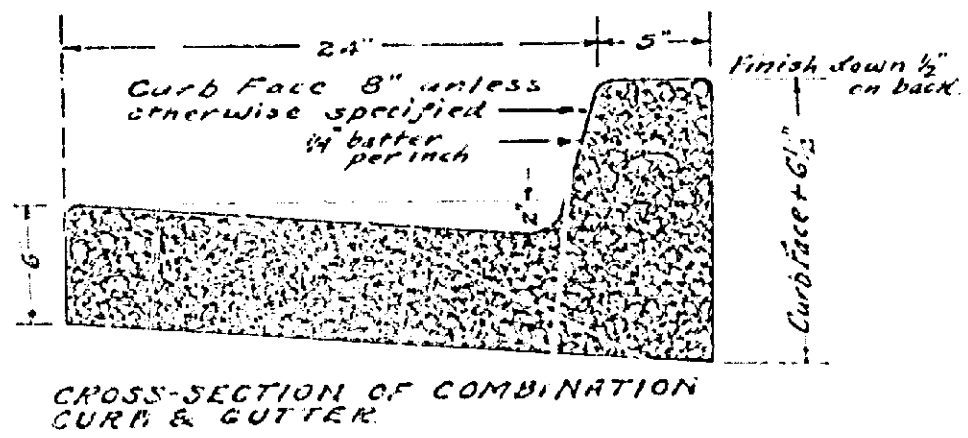
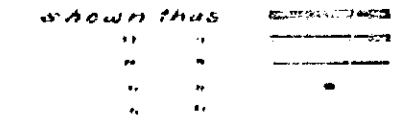
MAP 824

**MAP SHOWING IMPROVEMENTS TO BE MADE ON MILTON AND BLENHEIM STREETS**  
 LEE NAFZGAR, CITY ENGINEER. — APRIL, 1925.



**LEGEND**

Work to be constructed  
 Combination Curb and Gutter to be constructed  
 Culverts to be constructed  
 Type "T" Catch Basins to be constructed  
 Concrete pipe culverts to be constructed



Adopted by the Mayor and Common Council of the City of Riverside on this 7th day of April 1925.  
 Attest: *[Signature]*  
 City Clerk.

824

MAP 824