

MAP SHOWING
SEWER TO BE CONSTRUCTED IN
LINDEN ST., ALLEY & EAST SEVENTH ST.
AND OTTAWA AVE.
LEE NAFZGAR, CITY ENGINEER - MAY 1925.

LEGEND
 Vitriified sewer pipe to be layed shown thus —
 "Y" Branches " " Y
 Type "A" Manholes " " O
 District benefited bounded by a yellow line " " " " " "
 Sewer already constructed " " " " " "

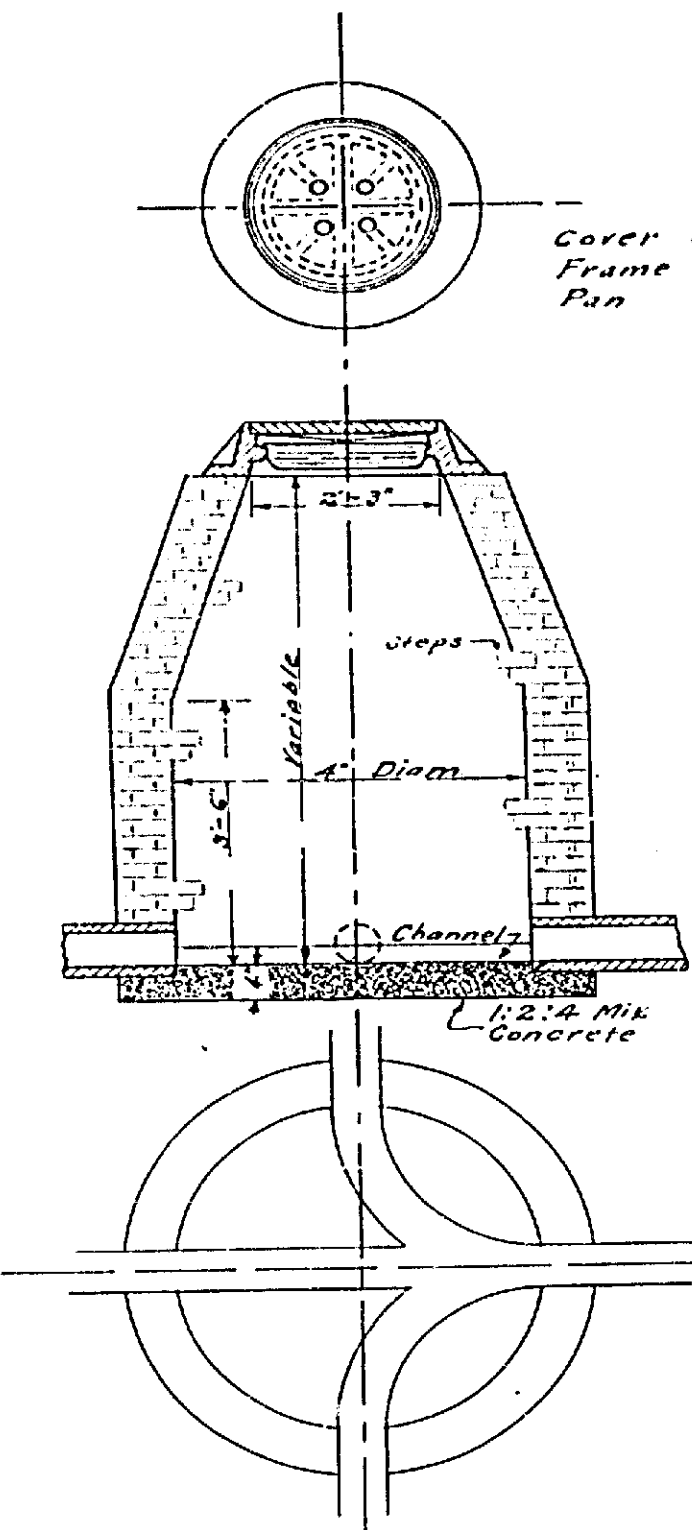
Adopted by the Mayor and Common
Council of the City of Riverside
this 12th day of May 1925.

Attest

 City Clerk

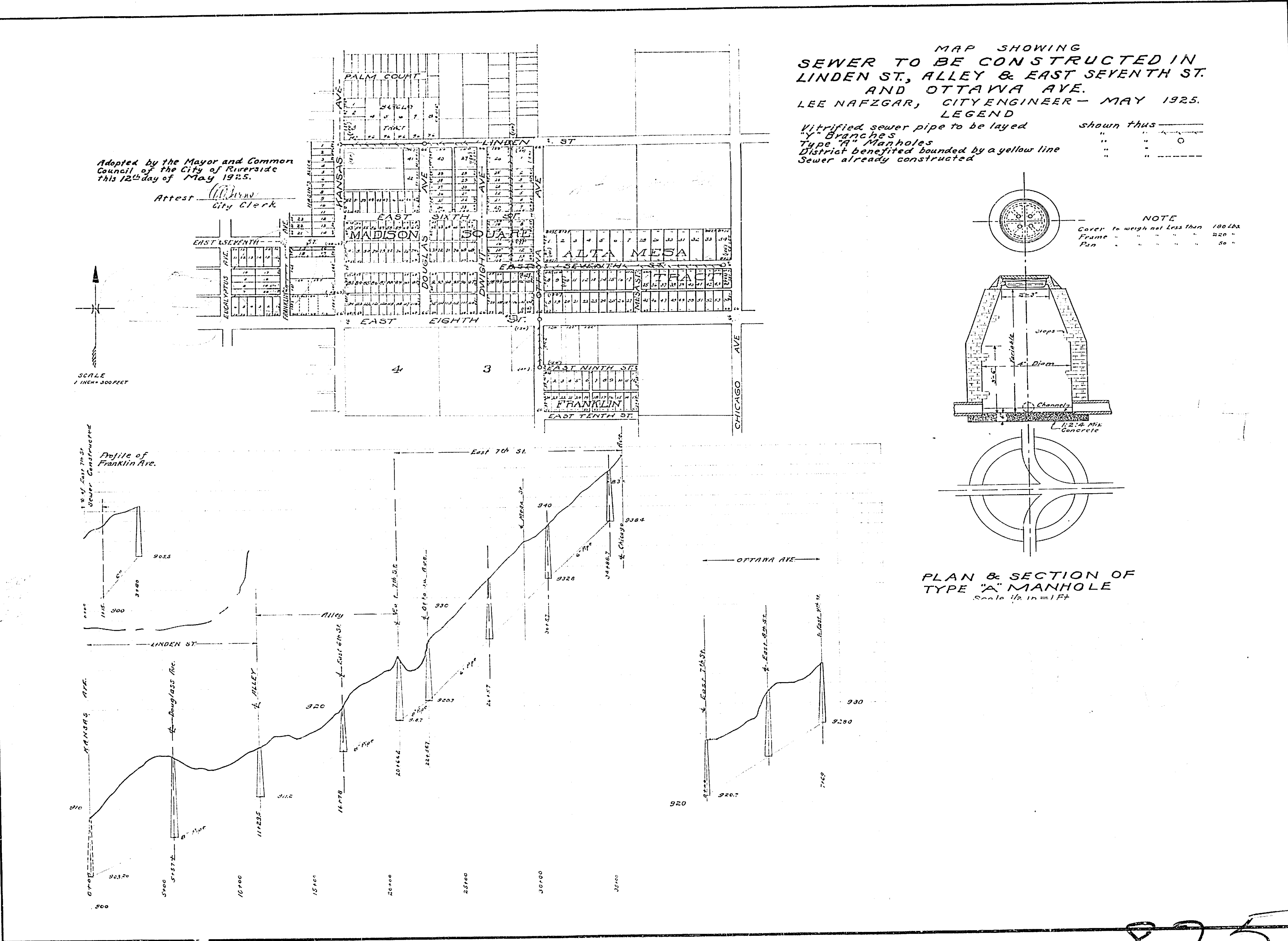
SCALE
1 inch = 500 feet

Profile of
Franklin Ave.



PLAN & SECTION OF
TYPE "A" MANHOLE
Scale 1/2" = 1 Ft

NOTE
 Covers to weigh not less than 100 lbs.
 Frames " " " " " " 220 "
 Pans " " " " " " 50 "



825