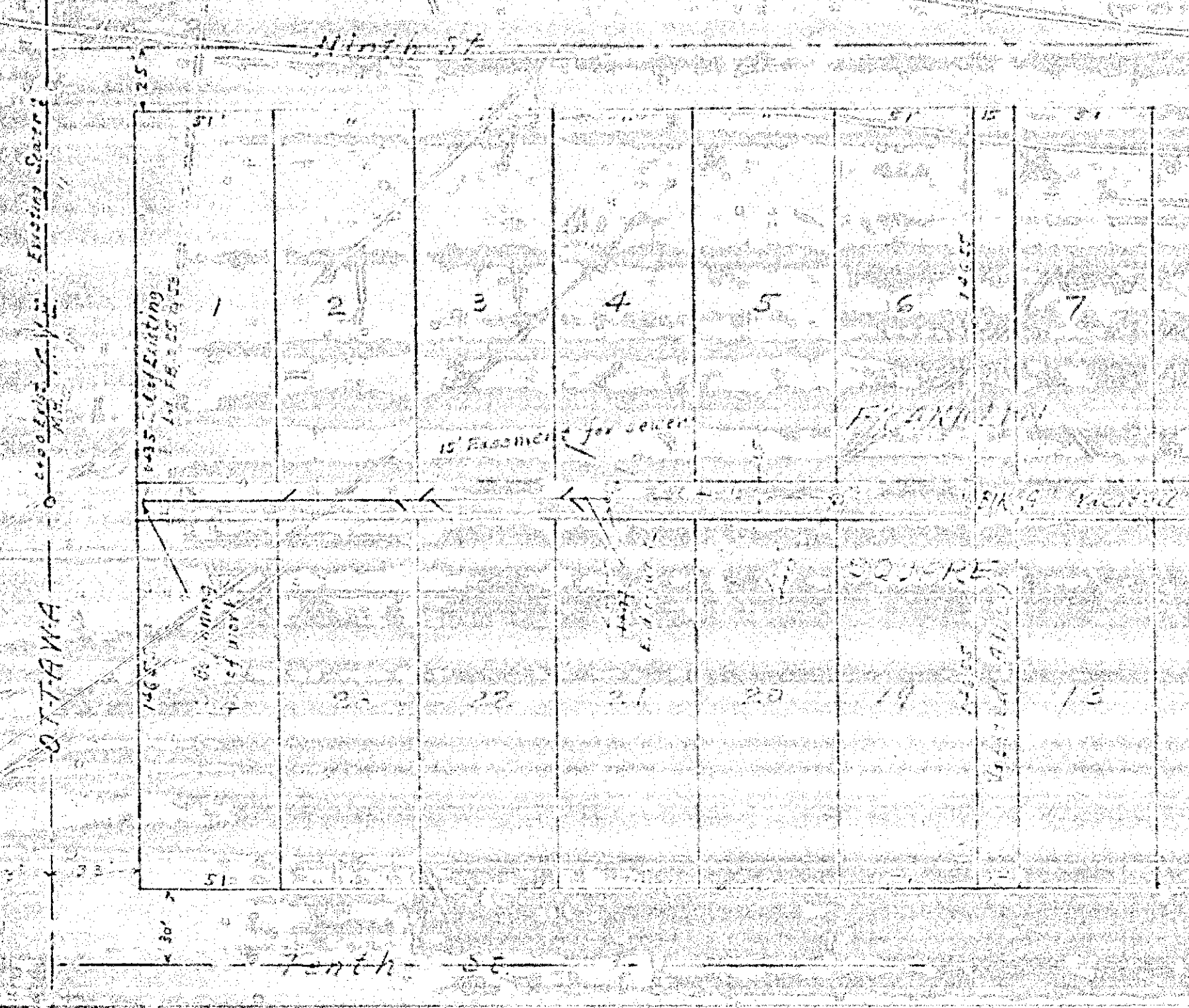


55"  
15"  
11"  
8.2"  
3.8"  
11"  
7.1"  
2.5"

22"  
17"  
11"  
8.5"  
8.5"  
11"  
17"  
22"



Proposed Square of Alley NW of  
Franklin Square  
E.B. 18, P. 70, 8, 1, 72  
Nov. 1, 1877



826