

34"

22"

17"

11"

8.5"

8.5"

11"

17"

22"

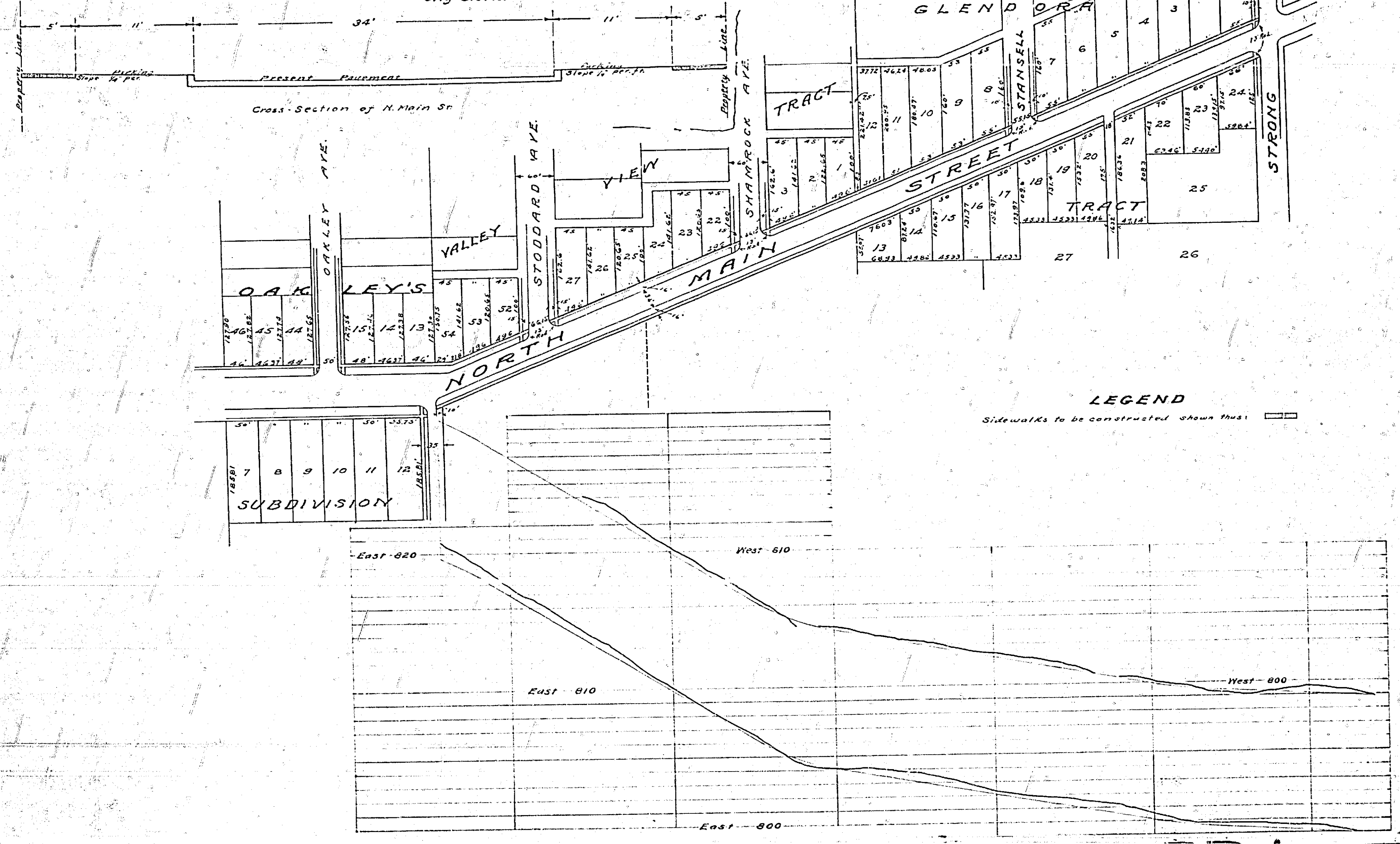
MAP No 831

**MAP SHOWING SIDEWALKS TO BE CONSTRUCTED IN NORTH MAIN STREET**  
 LEE NAFZGAR, CITY ENGINEER 1925.

SCALE:  
1 INCH = 100 FT.

ADOPTED BY THE MAYOR AND THE COMMON COUNCIL OF THE CITY OF RIVERSIDE THIS 28th DAY OF JULY 1925.

Attest  
City Clerk.



22"

17"

11"

8.5"

8.5"

11"

17"

**LEGEND**  
 Sidewalks to be constructed shown thus: [line style]

MAP No 831

831

22"