


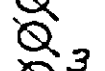

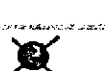



MAP SHOWING LIGHTING SYSTEM
REDWOOD DRIVE
LEE NAFZGAR, CITY ENGINEER, 1925.

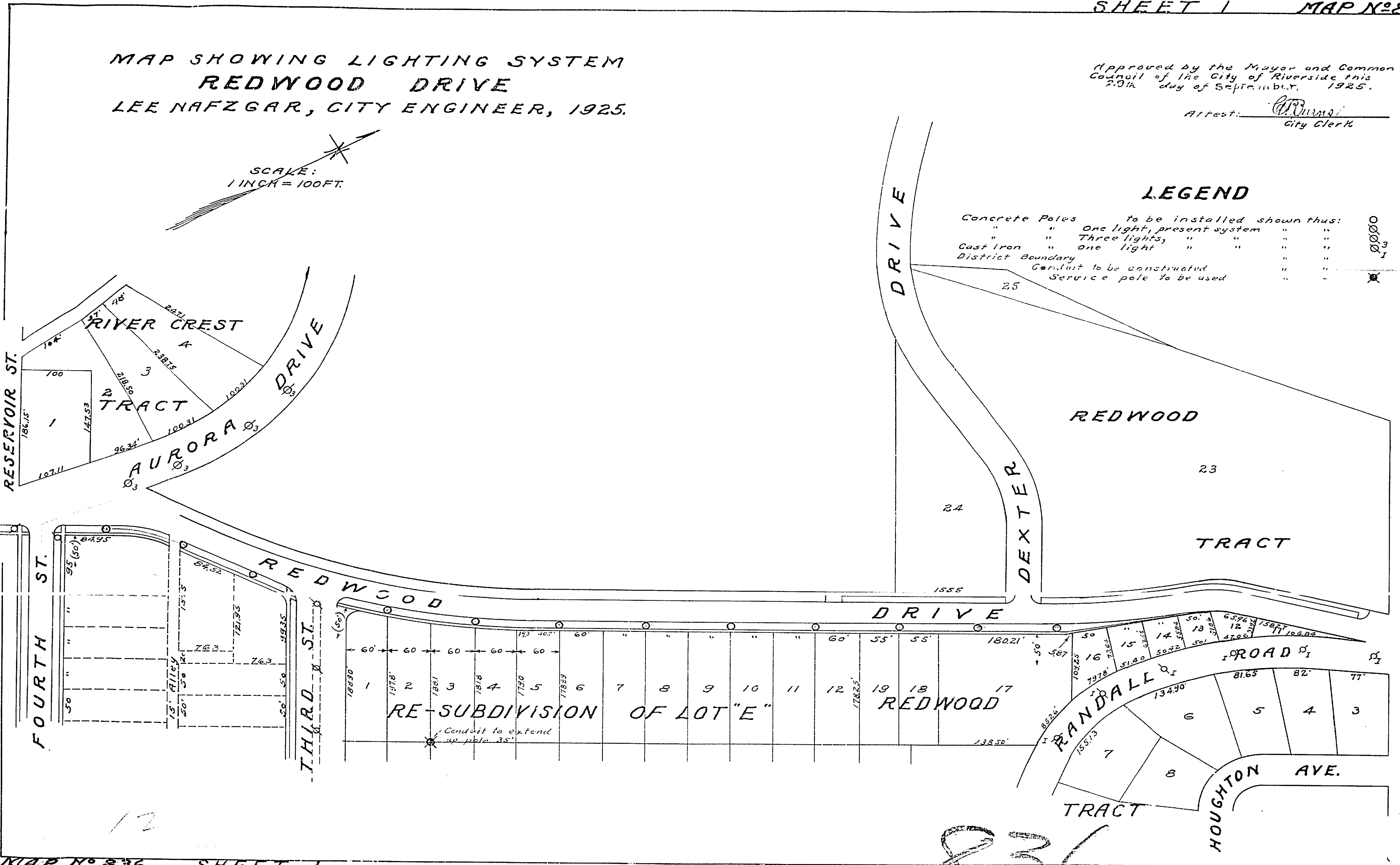
Approved by the Mayor and Common Council of the City of Riverside this 29th day of September, 1925.

Attest: *[Signature]*
City Clerk

SCALE:
1 INCH = 100 FT.

LEGEND

- Concrete Poles to be installed shown thus: 
- " " One light, present system " " 
- " " Three lights, " " " " 
- Cast Iron " one light " " " " 
- District Boundary " " " " 
- Conduit to be constructed " " " " 
- Service pole to be used " " " " 



836