

STANDARDS
STREET CROSS - SECTIONS
STORM WATER CATCH BASIN
COMBINATION CURB & GUTTER
CONCRETE MANHOLE TYPE A

CALIFORNIA
 DEPARTMENT OF PUBLIC WORKS
 DIVISION OF HIGHWAYS
 Standard Specifications 1935.
 Section 70

25 lbs. No. 8 Screenings per Sq. Yd.
 0.55 cu. ft. 1/2" to 3/4" Rock per Sq. Yd.
 36 lbs. No. 4 Rock per Sq. Yd.
 0.25 cu. ft. 1/2" to 3/4" Rock per Sq. Yd.
 450 lbs. BASE #2 ROCK PER SQ. YD.

1.2:1 Mix Concrete
 1.2:1 Mix Concrete
 1.2:1 Mix Concrete

1.2:1 Mix Concrete
 1.2:1 Mix Concrete
 1.2:1 Mix Concrete

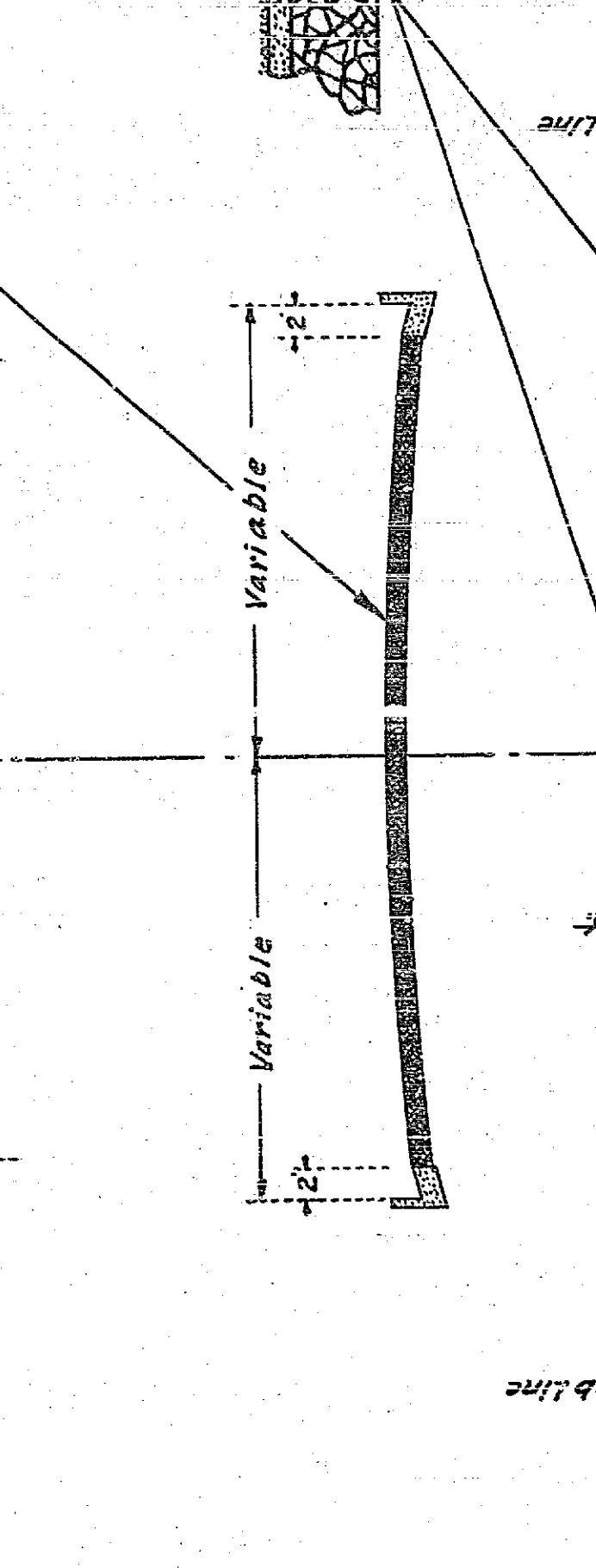
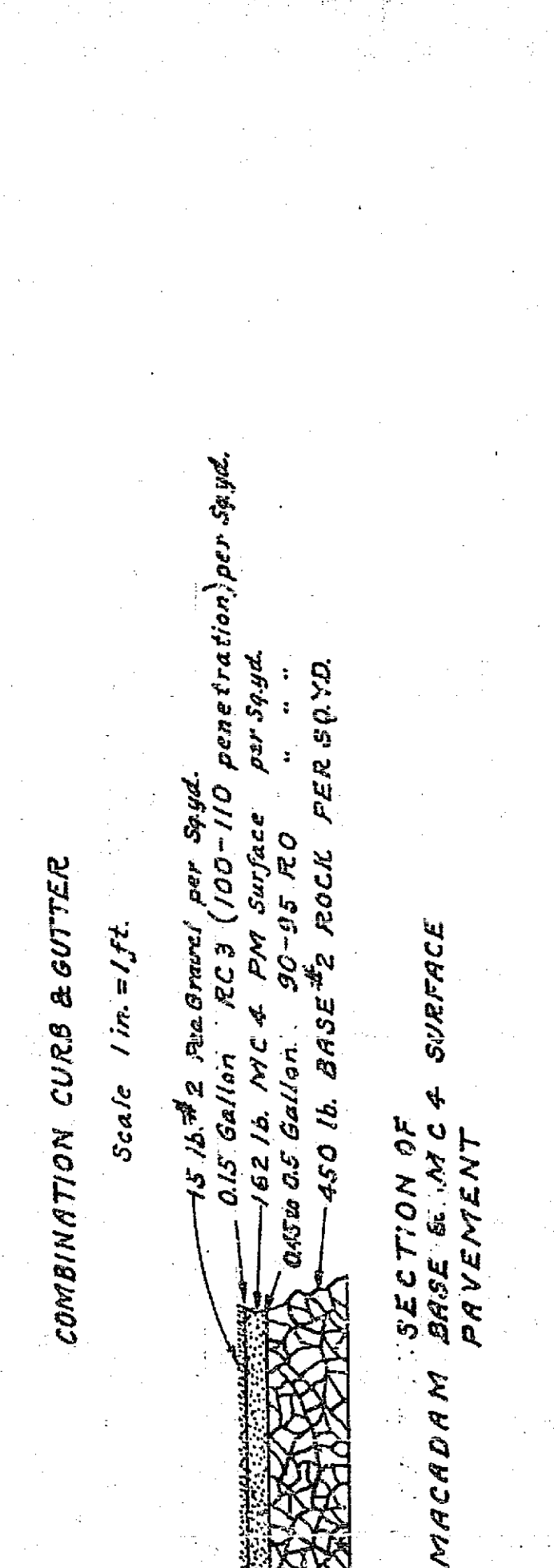
1.2:1 Mix Concrete
 1.2:1 Mix Concrete
 1.2:1 Mix Concrete

1.2:1 Mix Concrete
 1.2:1 Mix Concrete
 1.2:1 Mix Concrete

1.2:1 Mix Concrete
 1.2:1 Mix Concrete
 1.2:1 Mix Concrete

APPROVED
 CITY ENGINEER.

NOTE:
 The dimensions given refer, in case of plastered curb, to the size of the curb before plaster has been applied to the face, but not to the top.

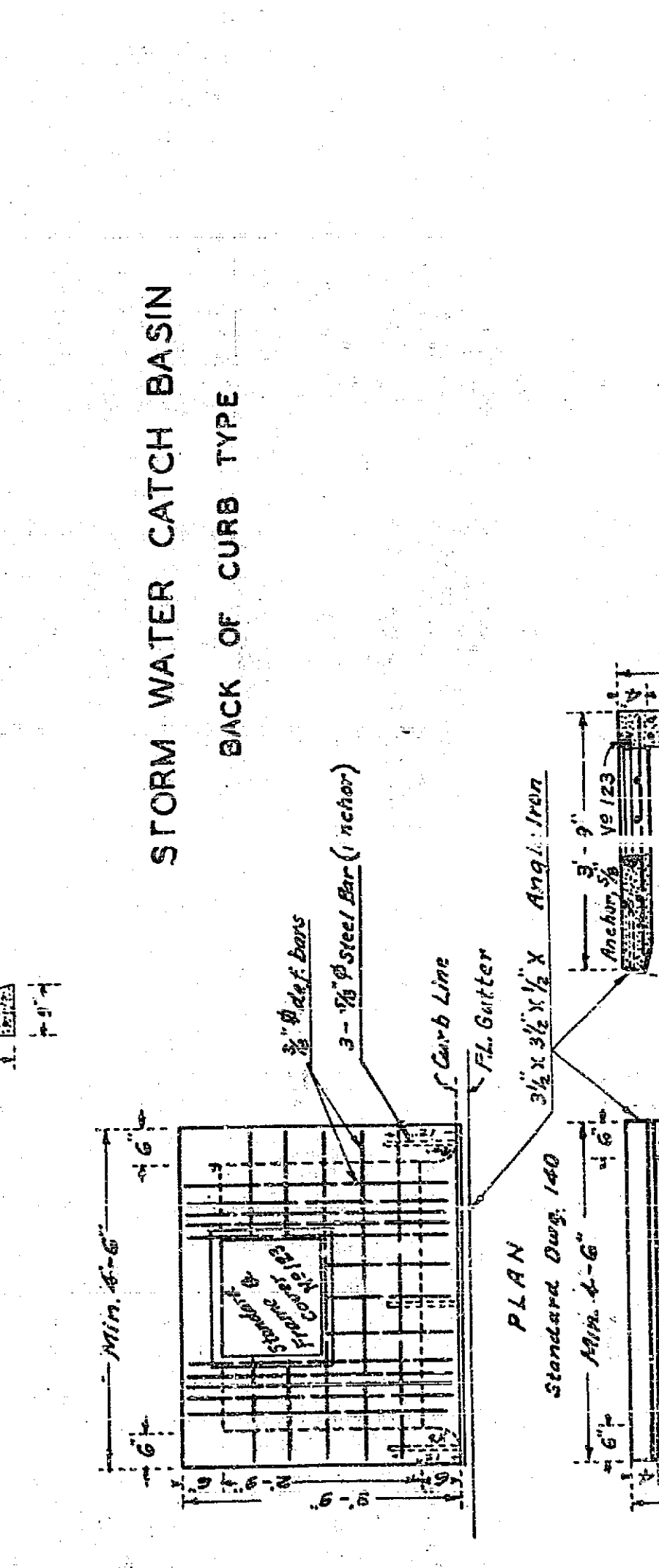
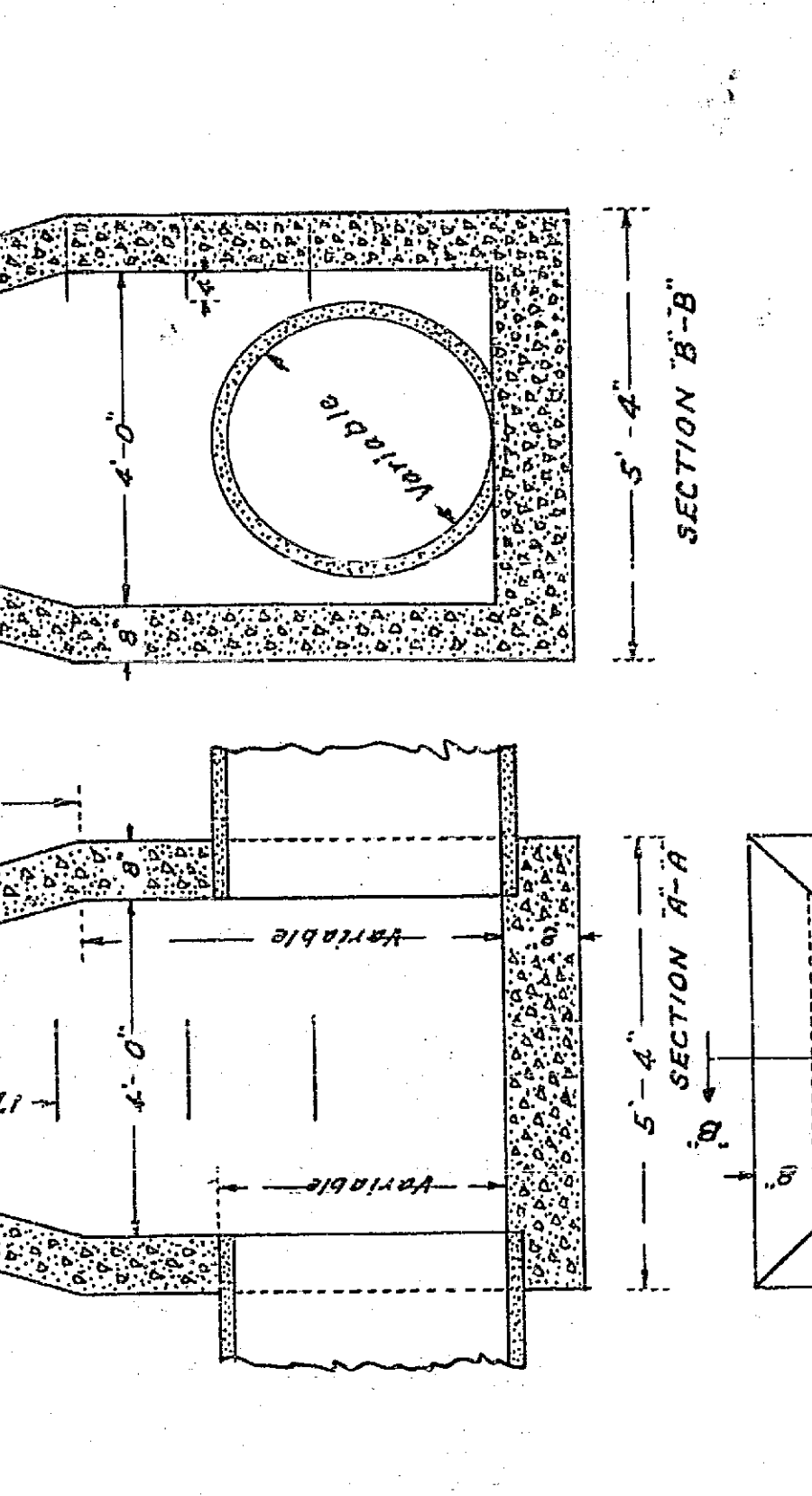


COMBINATION CURB & GUTTER
 Scale 1 in. = 1 ft.

COMBINATION CURB & GUTTER
 Scale 1 in. = 1 ft.

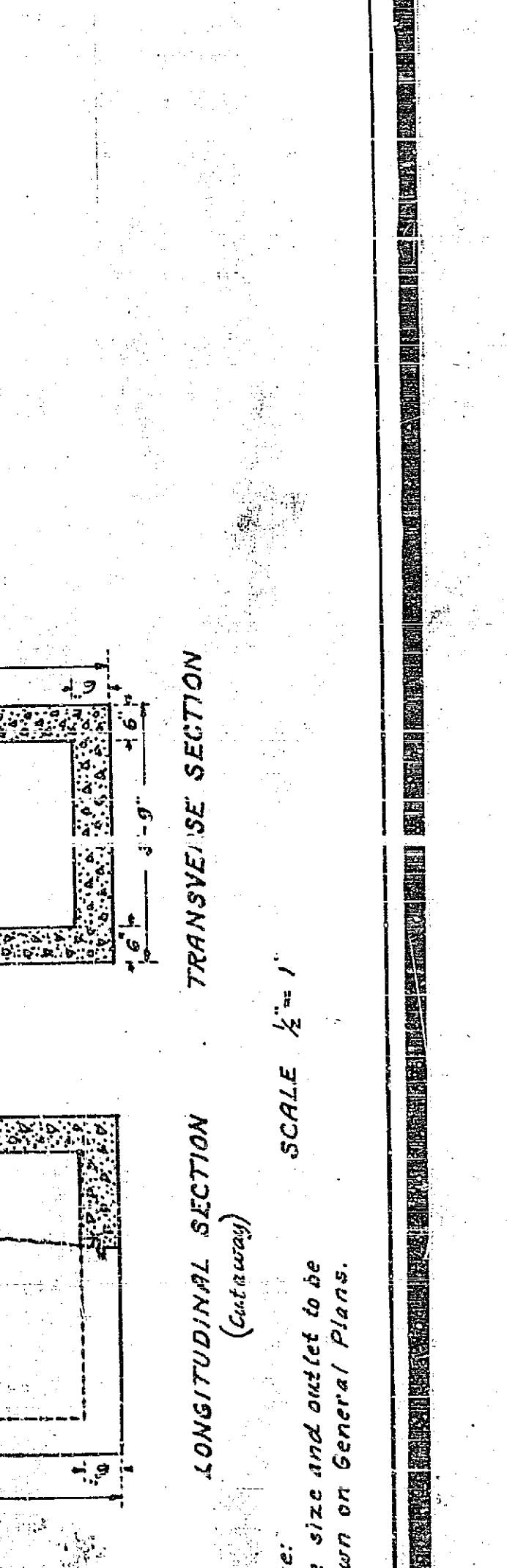
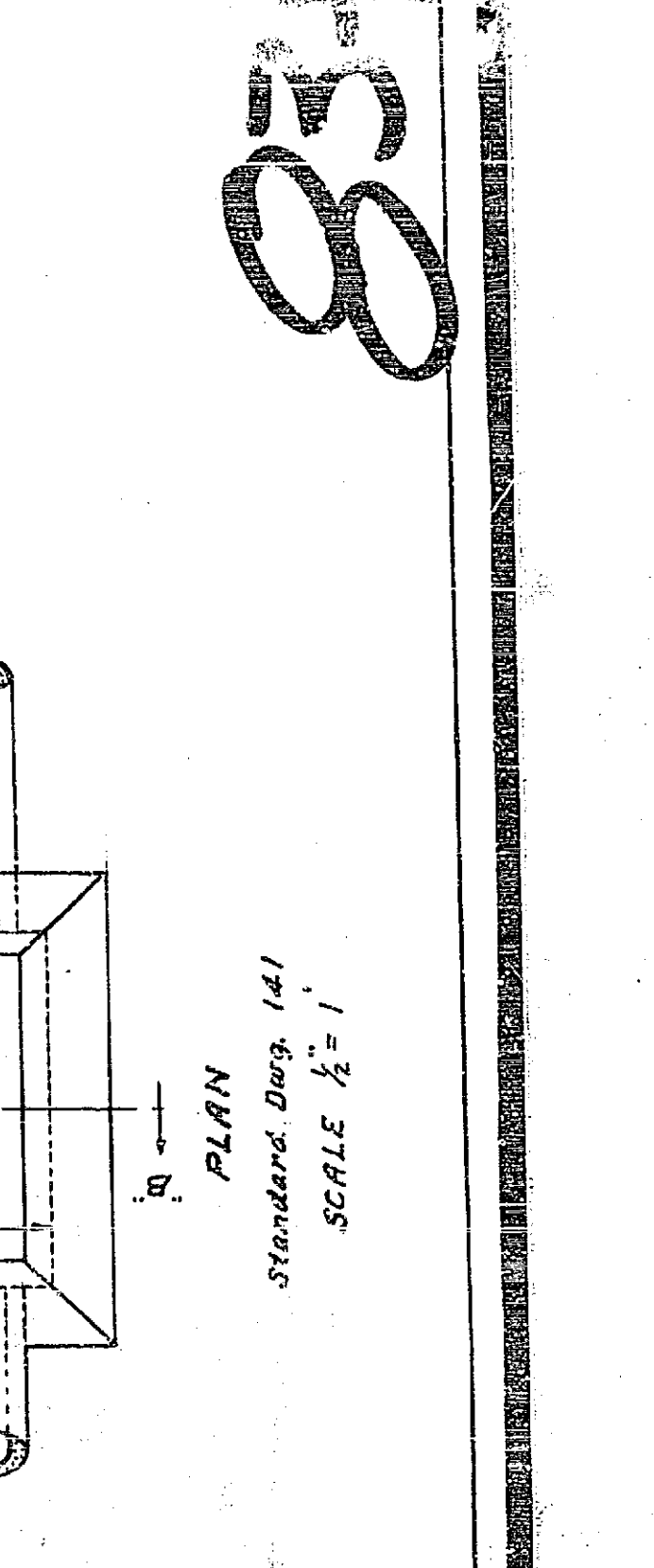
CONCRETE MANHOLE TYPE A

CONCRETE MANHOLE TYPE A



STORM WATER CATCH BASIN
 BACK OF CURB TYPE

STORM WATER CATCH BASIN
 BACK OF CURB TYPE



PLAN
 Standard Draw (41)
 SCALE 1/2" = 1'

PLAN
 Standard Draw (41)
 SCALE 1/2" = 1'

NOTE:
 Pipe size and outlet to be shown on General Plans.

NOTE:
 Pipe size and outlet to be shown on General Plans.