

# MAP OF PROPOSED SEWER IN MAGNOLIA AVE.

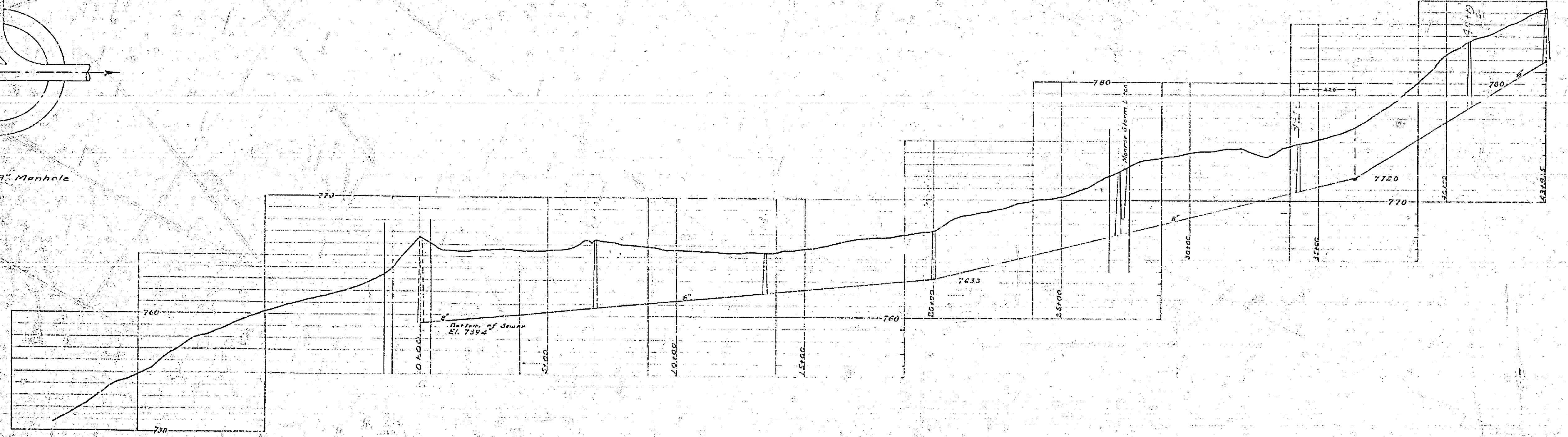
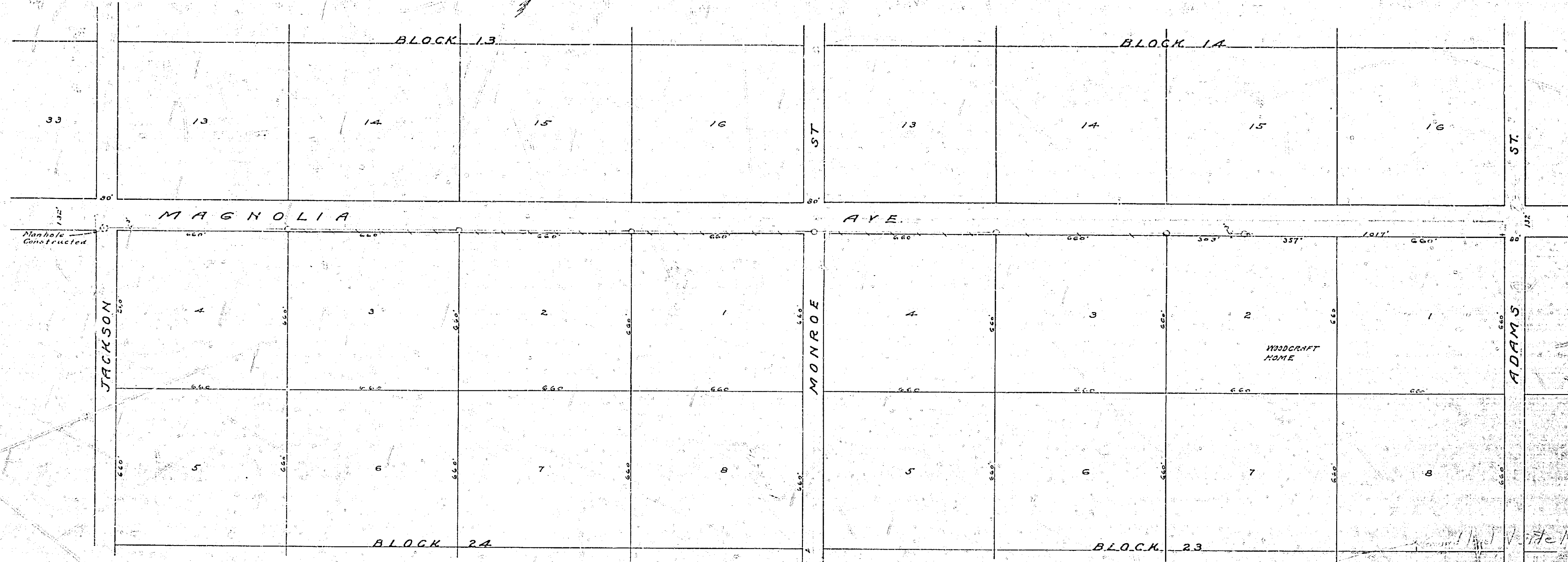
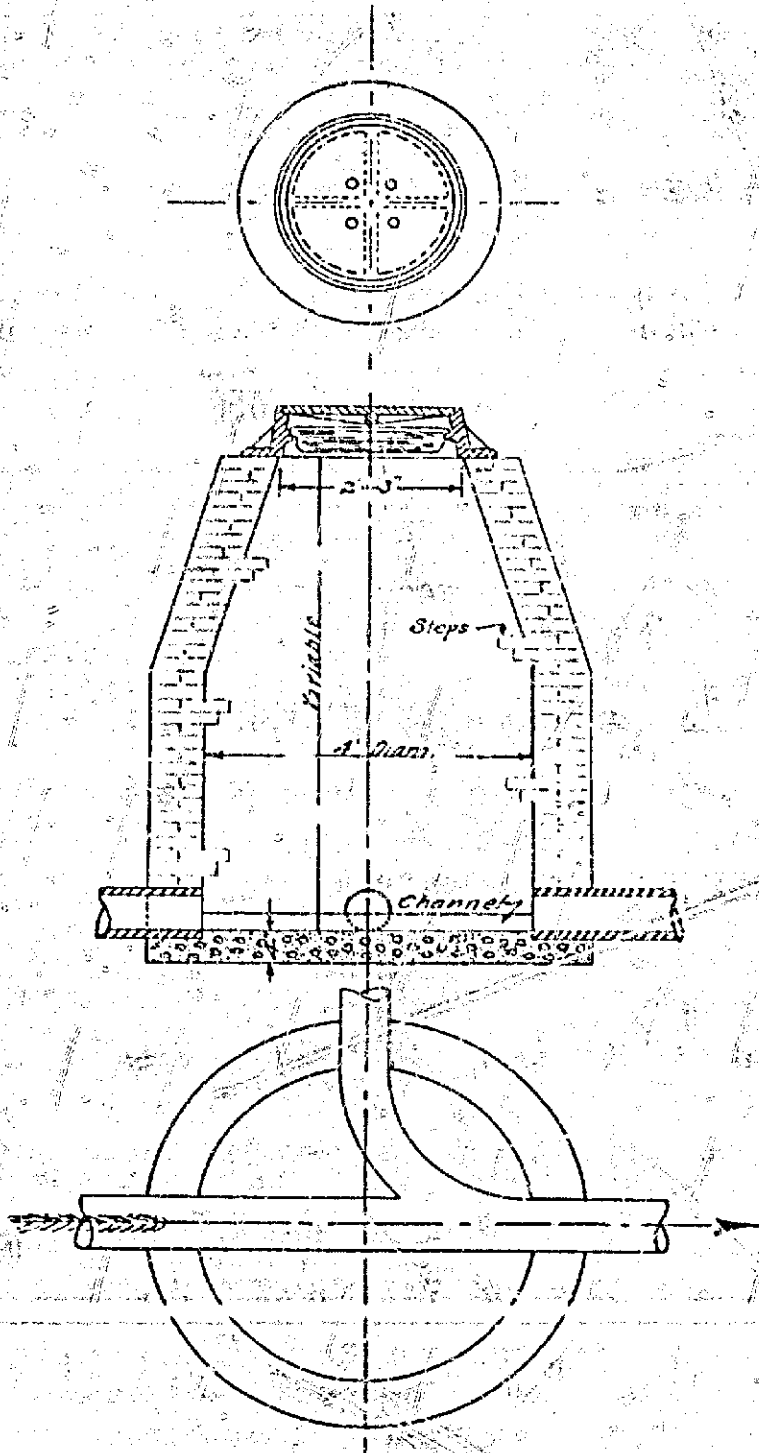
LEE NAFZGAR CITY ENGINEER 1925.

Approved by the Mayor and the  
Common Council of the City of  
Riverside this 10th day of  
November, 1925.  
Attest: *W. Adams*  
City Clerk.

SCALE  
1 INCH = 200 FT.

Note: See Standard Manhole House  
Calling Type "A" Drawing No. 819  
Approved by the Mayor and Common  
Council of the City of Riverside  
June 30, 1925.

Note:  
Cover is weight not less than 160 lbs  
Frame 220  
Pan 50



841 For Profile See No 337.