

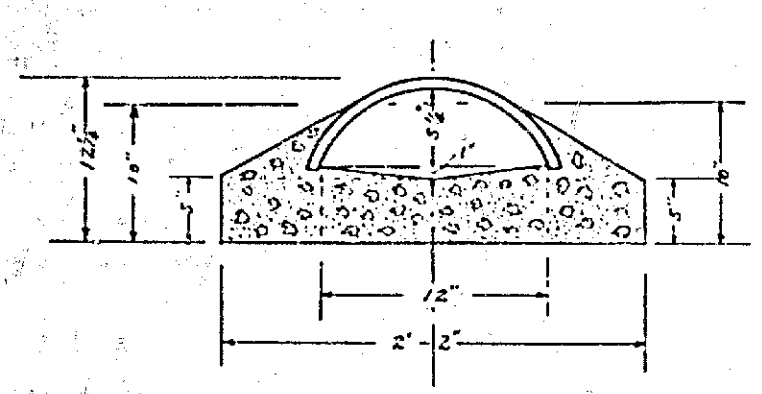
MAP OF PROPOSED IMPROVEMENT ON HIGH STREET
LEE NAFFGAR CITY ENGINEER 1925.



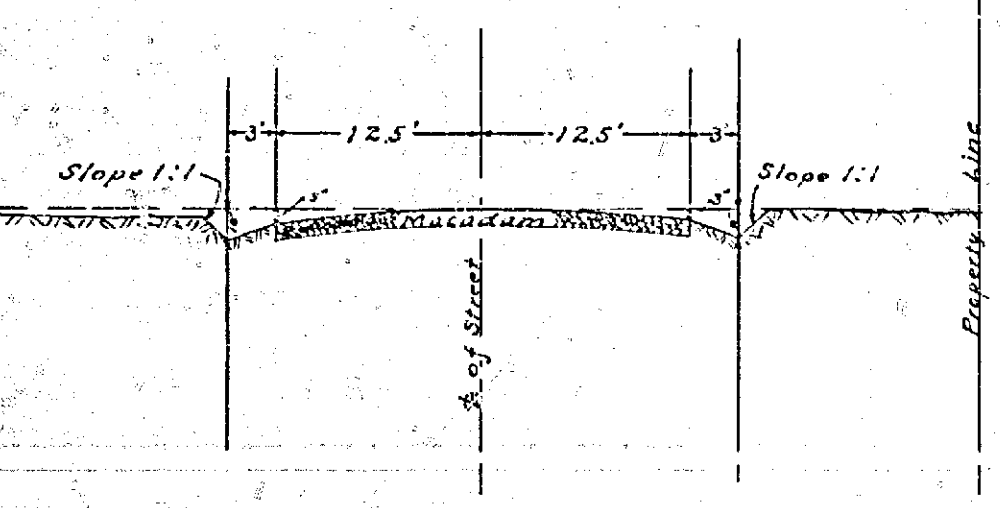
Approved by the Mayor and Common Council of the City of Riverside this 10th day of November 1925.

Attest: *[Signature]*
City Clerk.

SECTION THRU CULVERT "A"

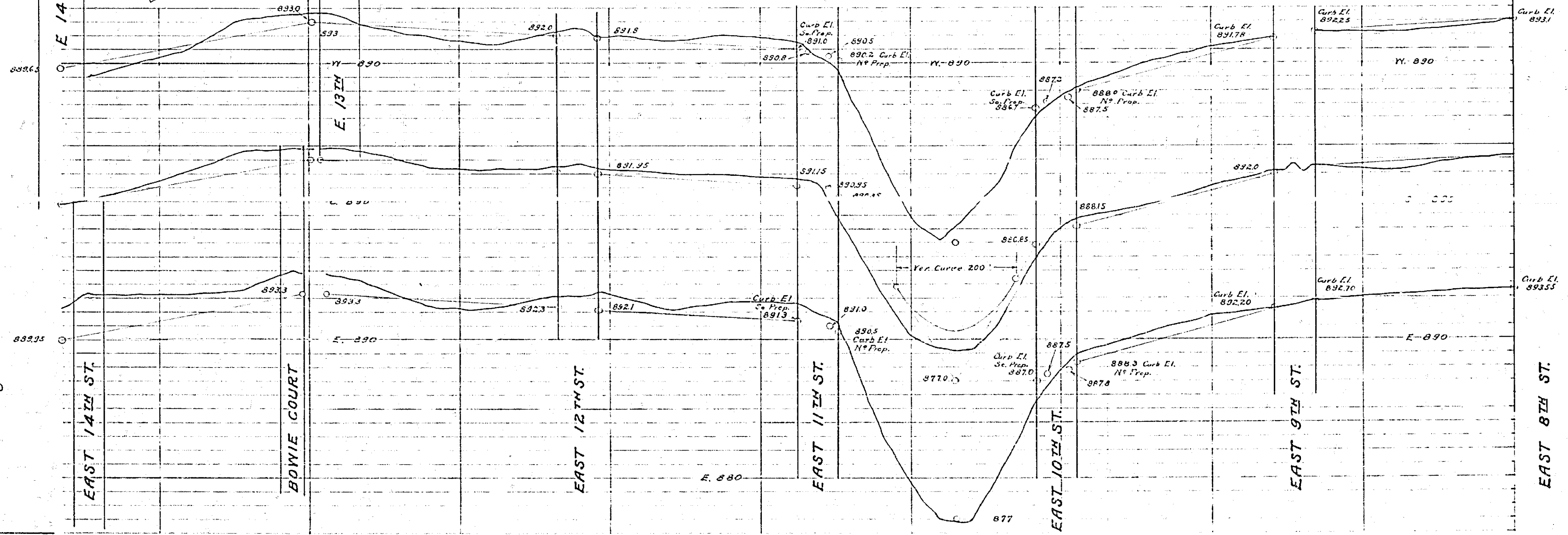
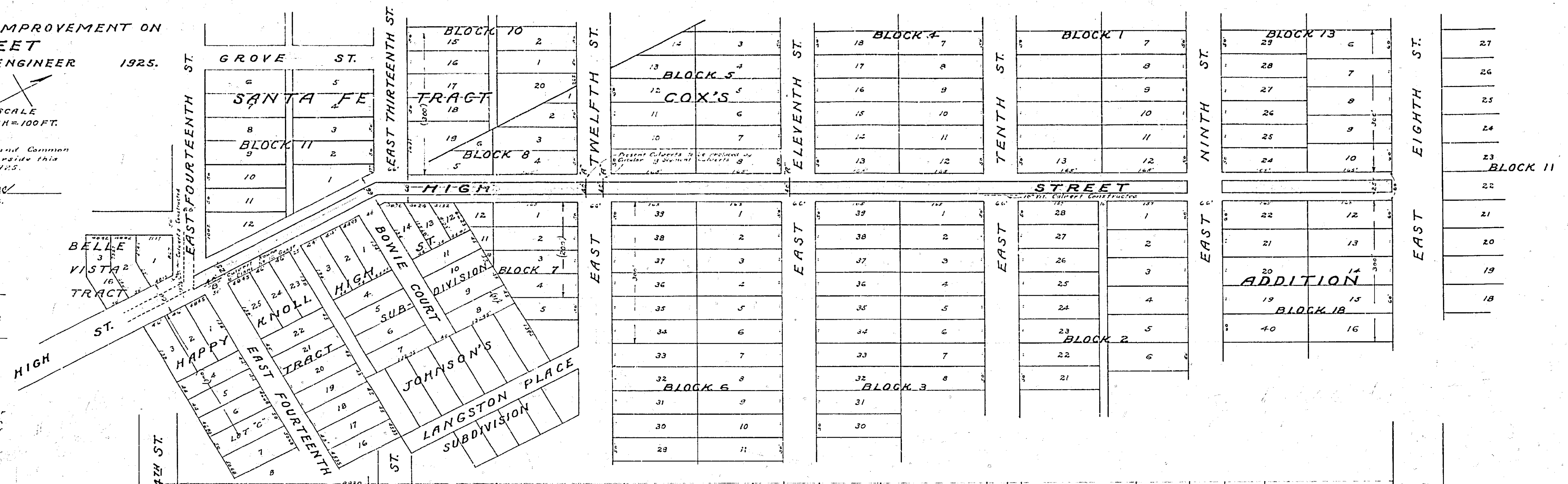


Galvanized Corrugated Iron Circular Segments 12" span 5 1/2" Rise with 1/2" x 1 1/2" x 1/4" angle iron on ends of culverts. At 12 Gauge. 1:2:4 Mix Concrete.



10 LA Screenings per sq yd
1/2" Crust of Gravel per sq yd
1 1/2" of 1/2" screenings per sq yd
1/2" of 1/4" screenings per sq yd
1/2" of 1/8" screenings per sq yd
1/2" of 1/16" screenings per sq yd
500 lb. base rock per sq yd
and enough filler to fill voids

Detail of Method of Construction of Macadam Pavement.



843