

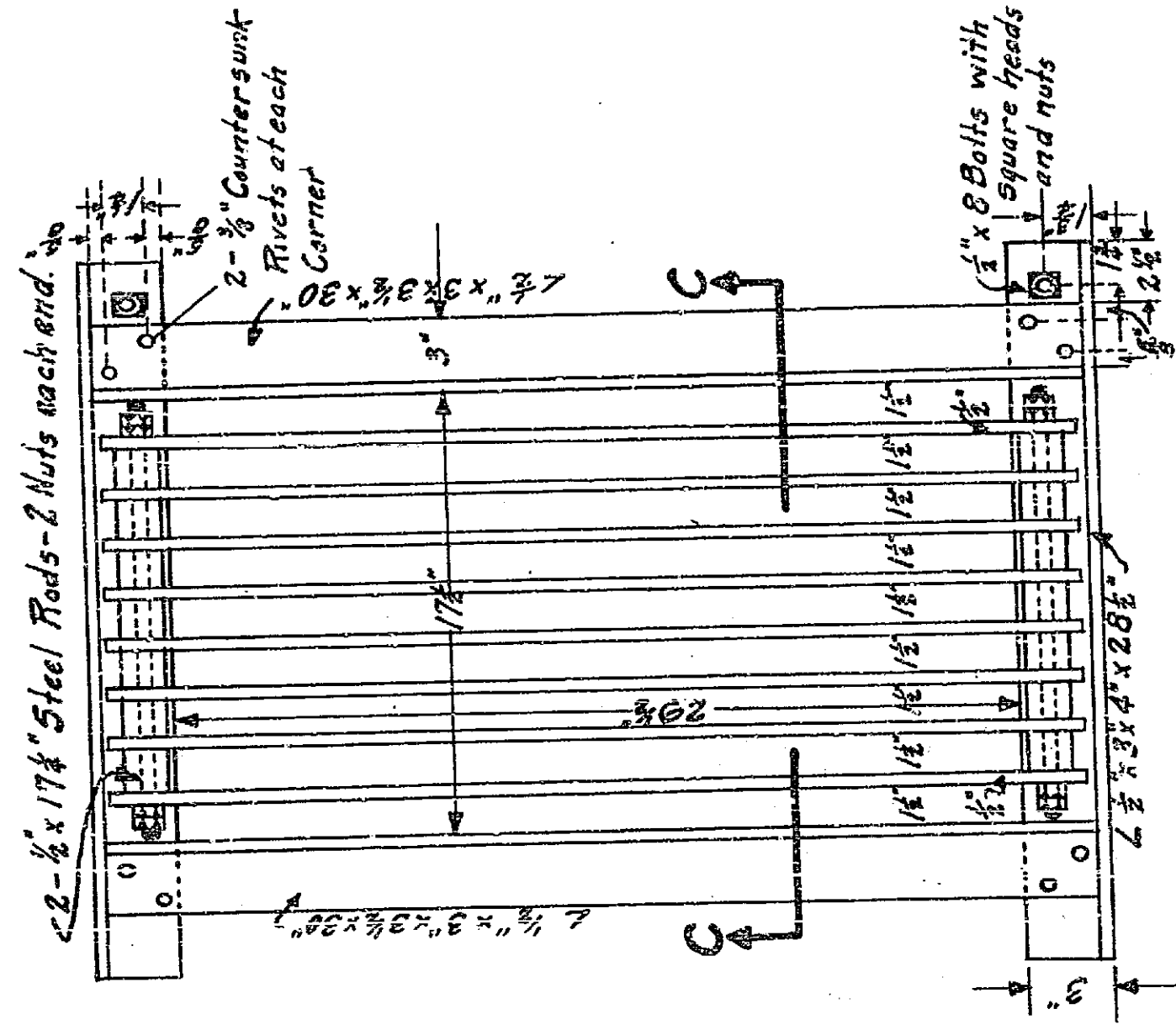
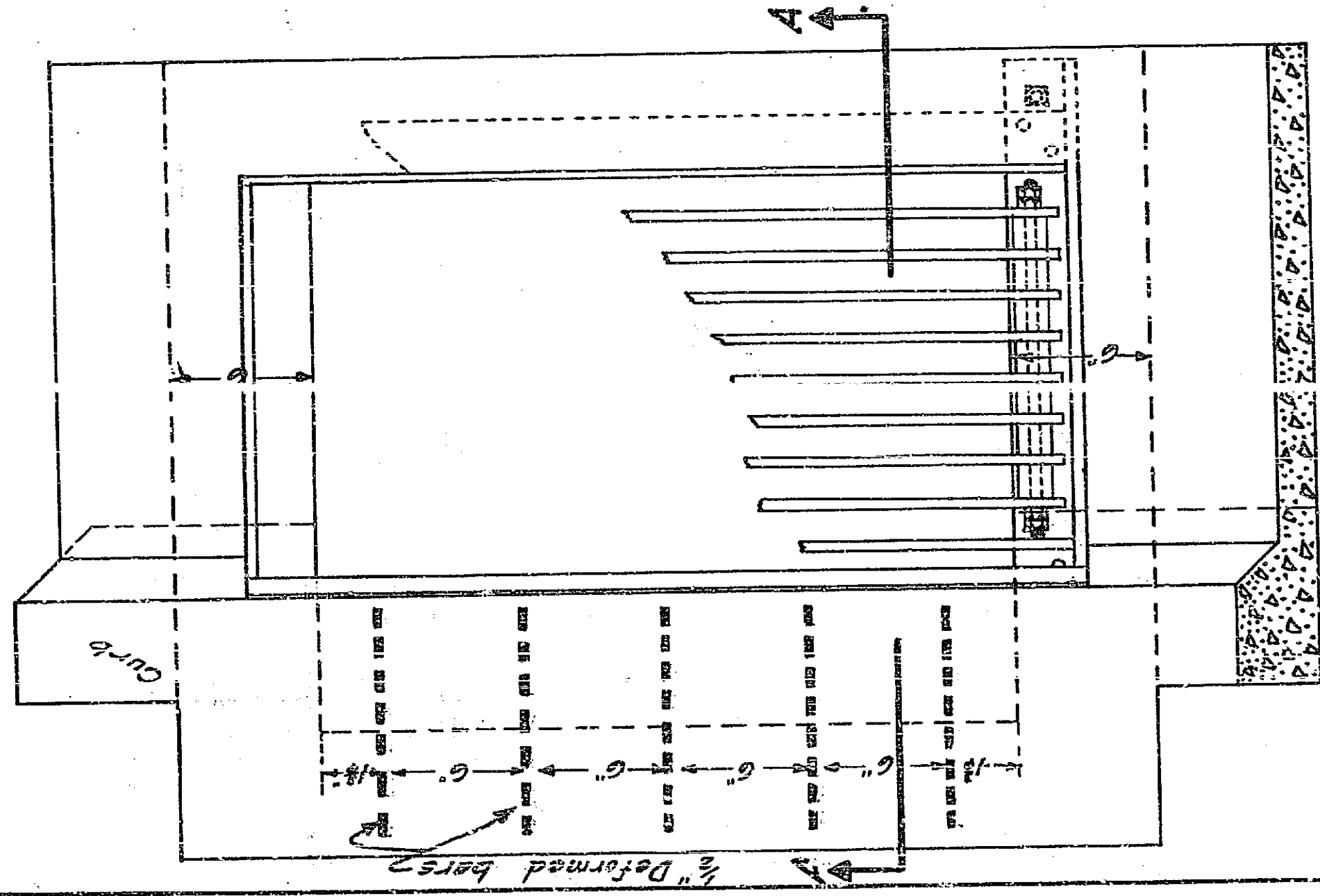
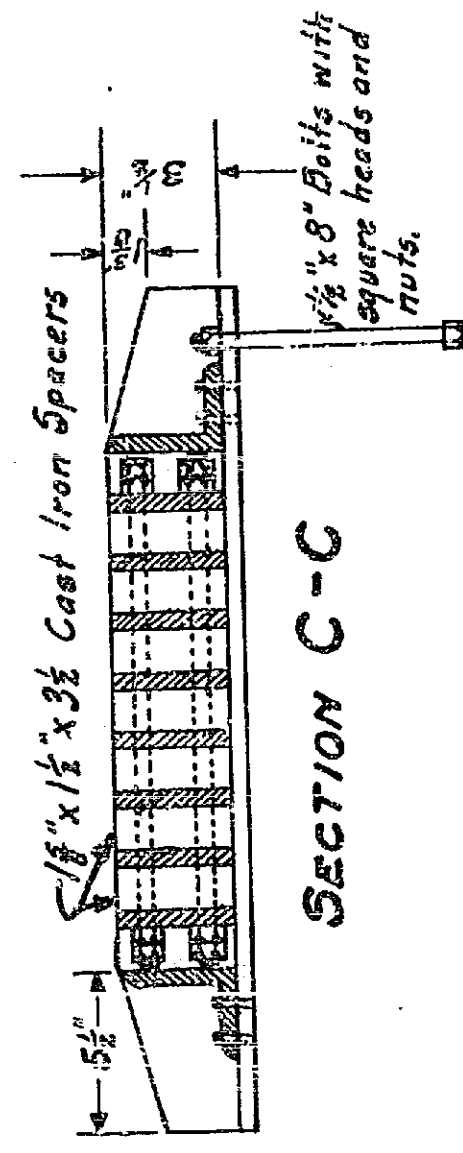
DETAIL SHEET No. 110
 Engineering Dept. - City of Riverside

DETAILS OF
 CATCH BASINS, FRAMES AND GRATINGS

In Intersection 6th St. and Pechappa Ave.

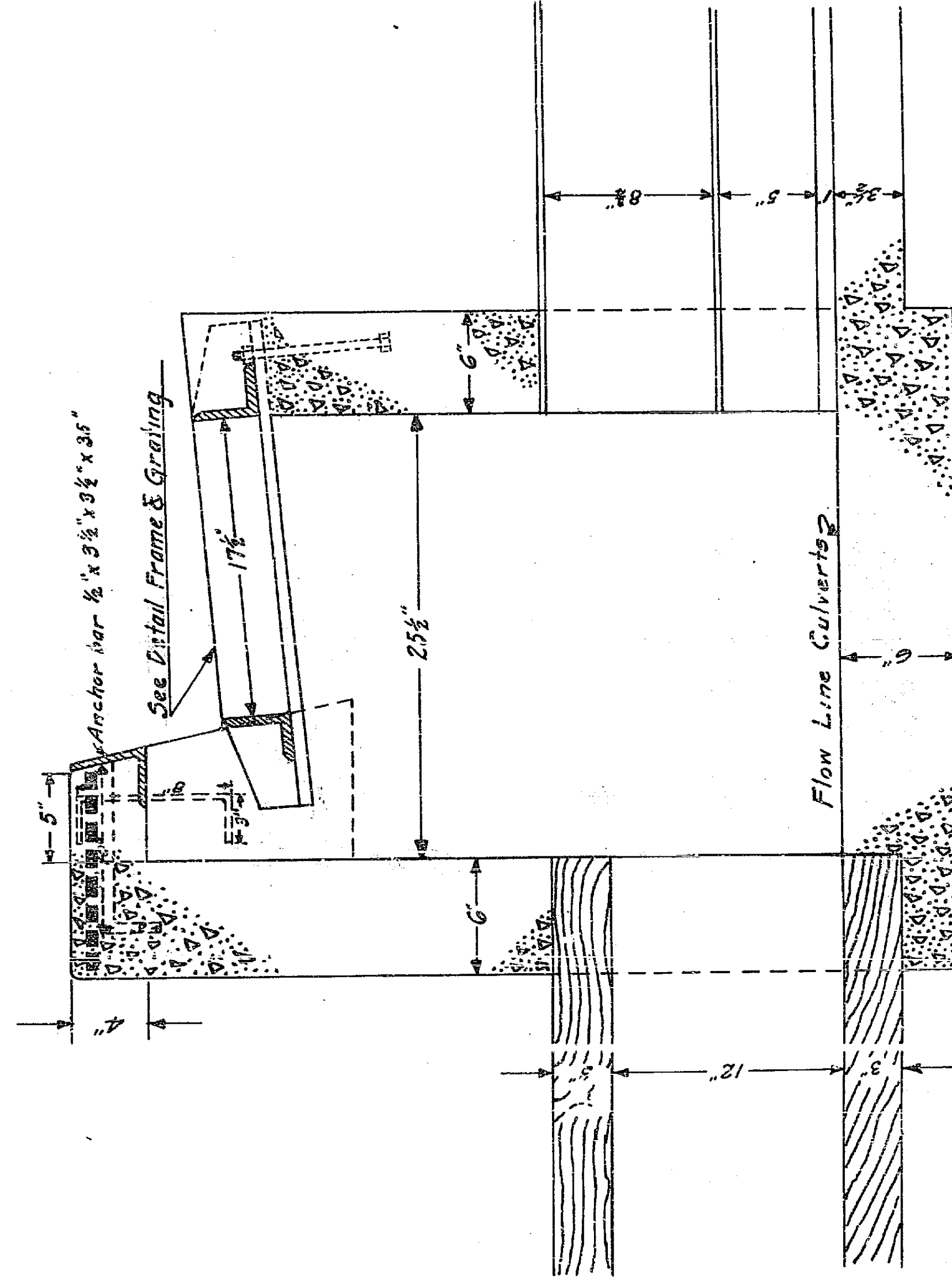
Scale: 1 1/2" = 1'

All exposed metal parts shall be galvanized.



PLAN

DETAIL FRAME & GRATING



SECTION A-A

84A