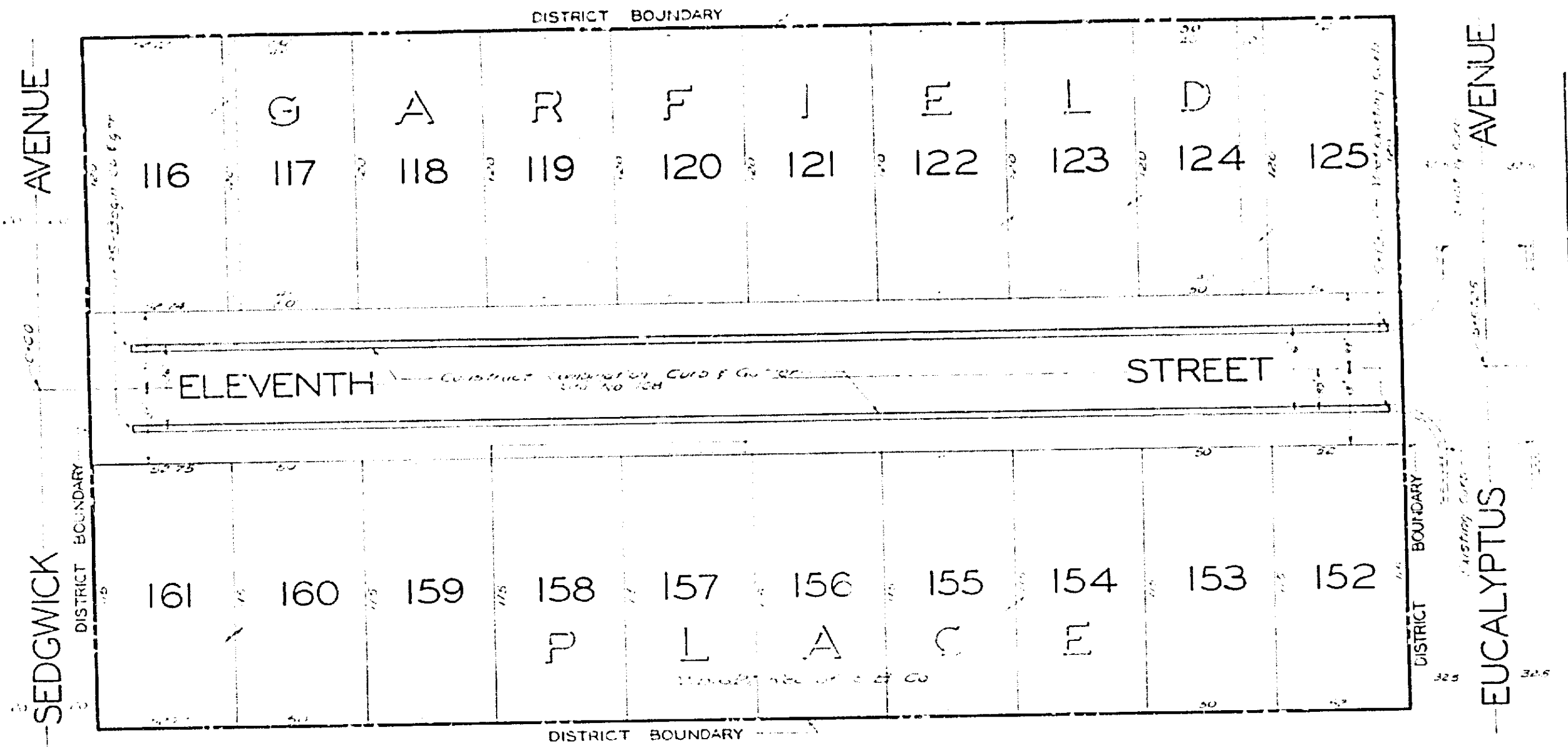


PLAN AND PROFILE  
 NO. 864.  
 FOR THE CONSTRUCTION OF CURBS AND GUTTERS ON  
**ELEVENTH STREET**  
 BETWEEN SEDGWICK AVENUE AND EUCALYPTUS AVENUE  
 RIVERSIDE, CALIFORNIA

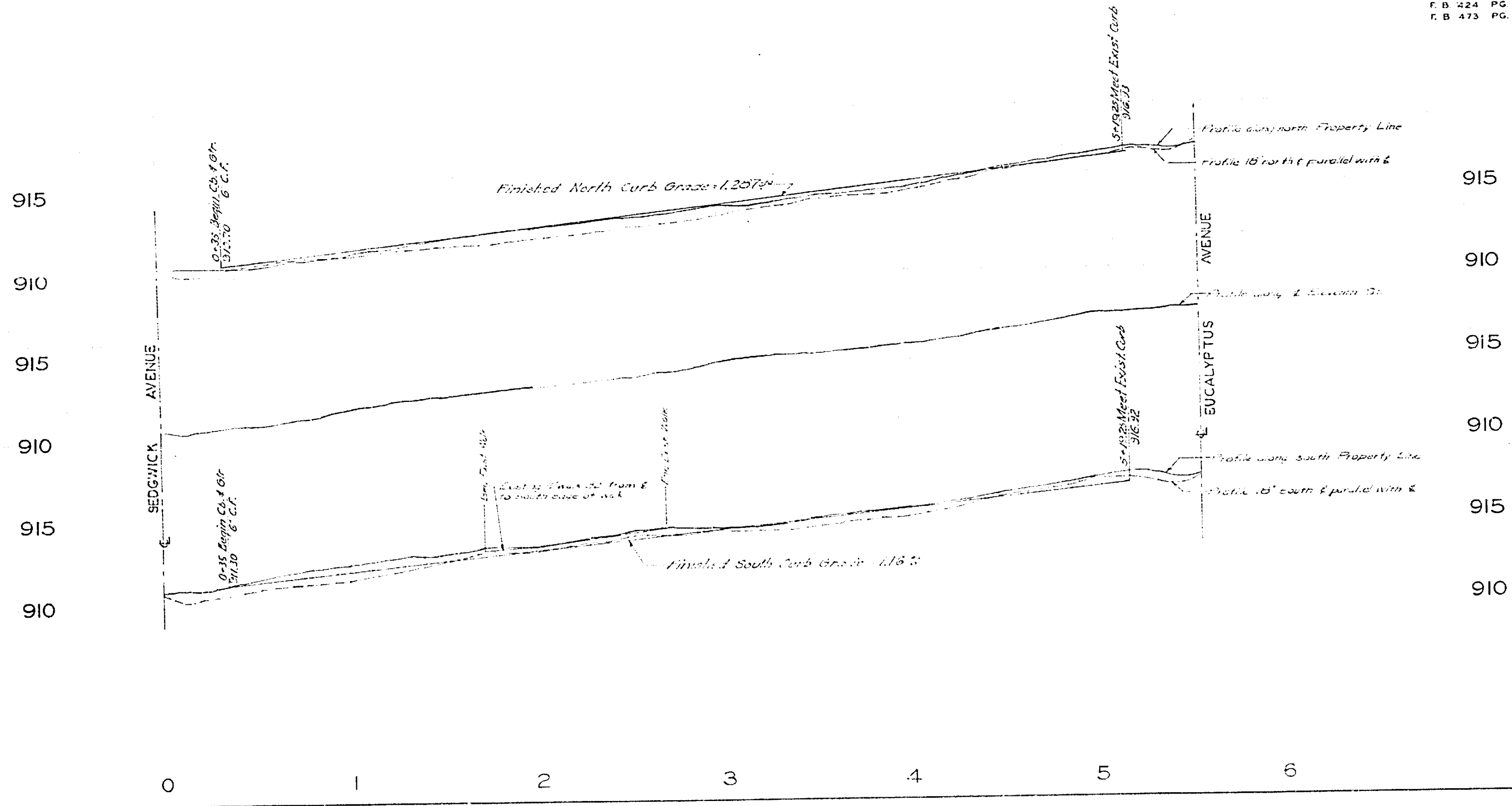


APPROVED  
 M. H. IRVINE REG. C. E. NO. 3011  
 CITY ENGINEER

THESE PLANS APPROVED AND ADOPTED BY THE  
 MAYOR AND COUNCIL OF THE CITY OF RIVERSIDE,  
 STATE OF CALIFORNIA, ON THIS  
 DAY OF SEPTEMBER 1949  
 CITY CLERK

F. B. 424 PG. 49 PROFILE  
 F. B. 473 PG. 25 TOPC.

SCALE: HORIZ. 1"=40'  
 VERT. 1"=4'



864

55"  
 11"  
 11"  
 8'2"  
 8'8"  
 11"  
 11"  
 55"

11"  
 11"  
 11"  
 11"  
 8'8"  
 8'5"  
 11"  
 17"  
 22"