

55"

11"

11"

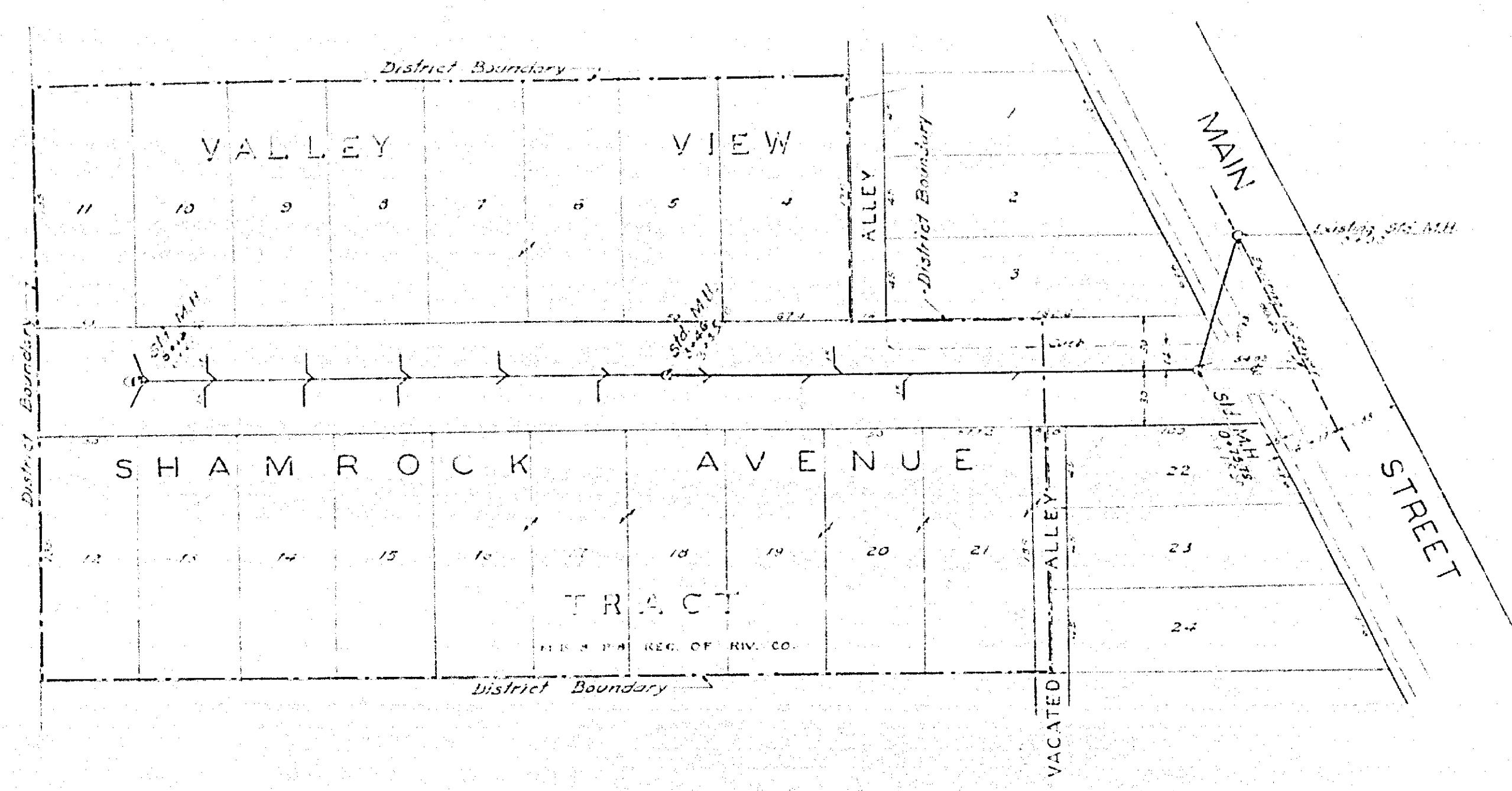
8'2"

55"

11"

11"

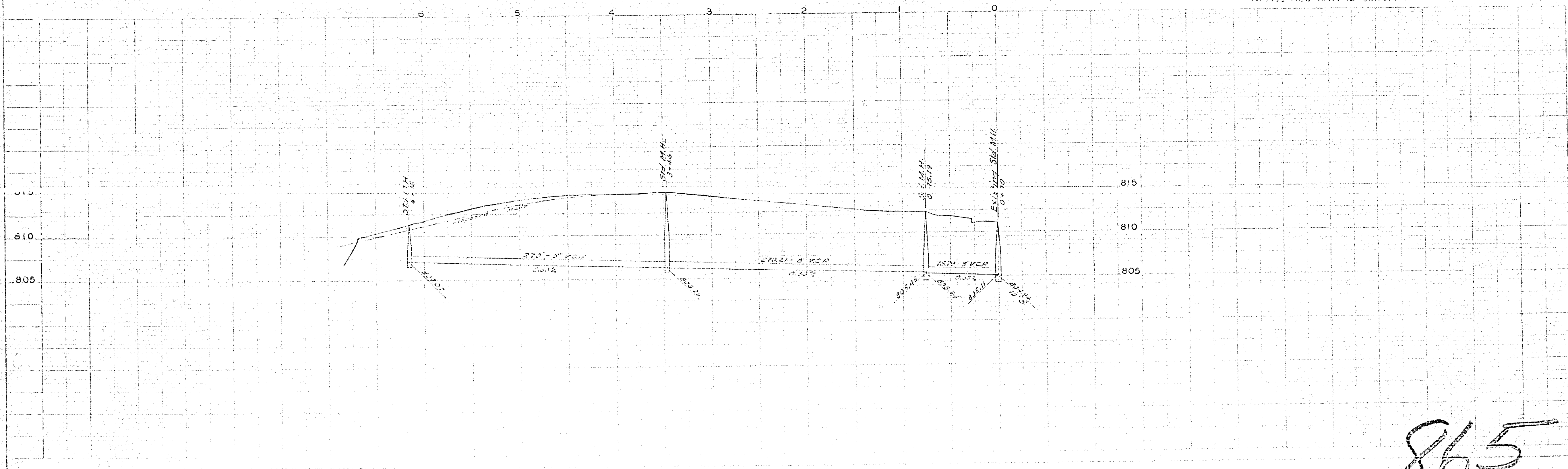
8'2"



PLAN AND PROFILE
 NO. 865
 SHAMROCK AVENUE
 SANITARY SEWER DISTRICT

CITY OF RIVERSIDE - CALIFORNIA
 FOR THE YEAR 1950
 SCALE: HORIZONTAL 1" = 40' VERTICAL 1" = 4'
 APPROVED: [Signature] CITY ENGINEER
 THESE PLANS APPROVED AND ADOPTED BY THE MAYOR AND COUNCIL OF THE CITY OF RIVERSIDE, STATE OF CALIFORNIA, ON THIS [Date] DAY OF [Month] 1950
 DISTRICT BOUNDARY SHOWN THIS [Symbol] CITY CLERK

Note: Red MH, as constructed.



8'2"

11"

11"

55"

8'2"

11"

11"

865