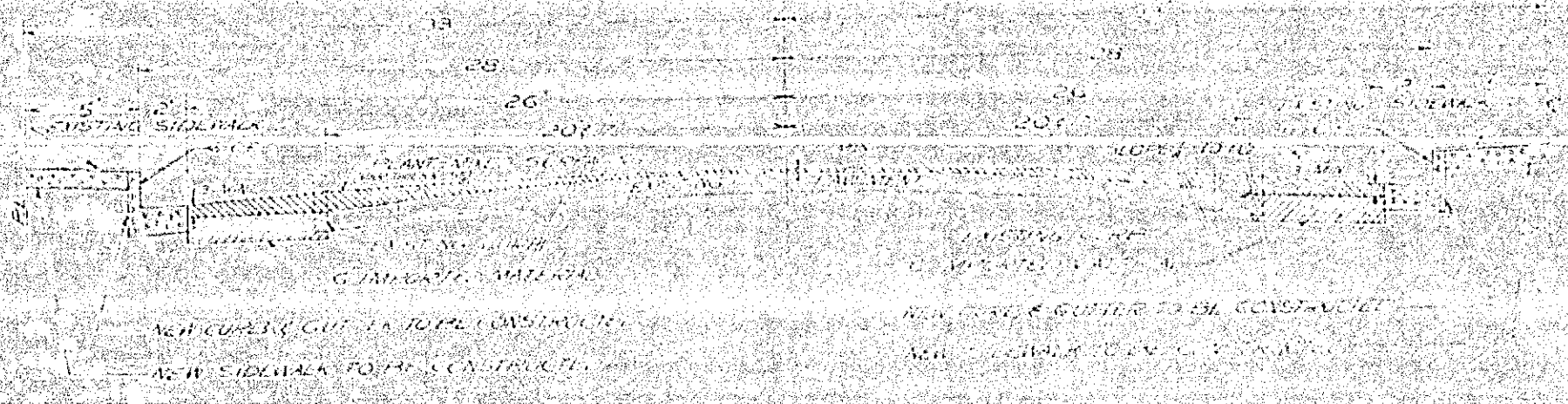


STANDARD DETAIL DRAWINGS

- CATCH BASIN
- CATCH BASIN WITH FLOW CONTROL
- MANHOLE WITH FLOW CONTROL
- CONCRETE CURB
- CONCRETE CURB WITH SIDEWALK
- CONCRETE CURB WITH SIDEWALK AND FLOW CONTROL
- CONCRETE CURB WITH SIDEWALK AND FLOW CONTROL AND FLOW CONTROL
- CONCRETE CURB WITH SIDEWALK AND FLOW CONTROL AND FLOW CONTROL AND FLOW CONTROL
- CONCRETE CURB WITH SIDEWALK AND FLOW CONTROL AND FLOW CONTROL AND FLOW CONTROL AND FLOW CONTROL



PLAN
NO. 867
FOR THE PROPOSED IMPROVEMENT OF
WALNUT STREET
BETWEEN SEVENTH STREET & FOURTEENTH STREET
BEING A
MAJOR CITY STREET
RIVERSIDE, CALIFORNIA

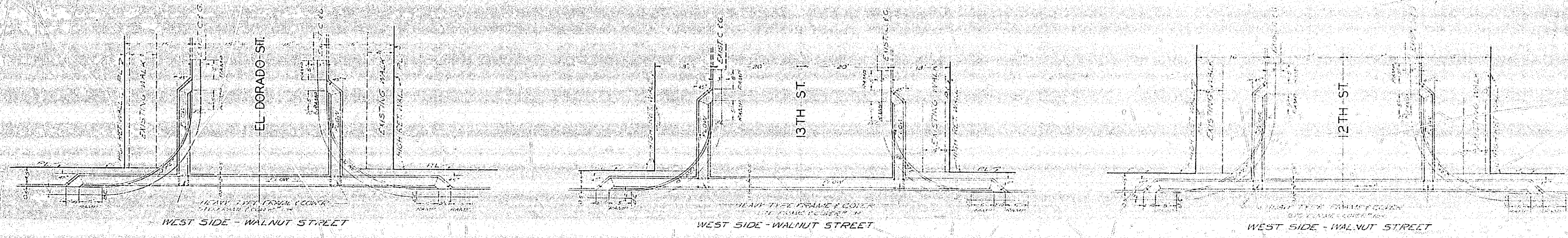
LEGEND

- EXISTING SIDEWALK
- EXISTING CURB
- EXISTING ROADWAY
- PROPOSED SIDEWALK
- PROPOSED CURB
- PROPOSED ROADWAY
- PROPOSED IMPROVEMENTS
- PROPOSED IMPROVEMENTS
- PROPOSED IMPROVEMENTS
- PROPOSED IMPROVEMENTS

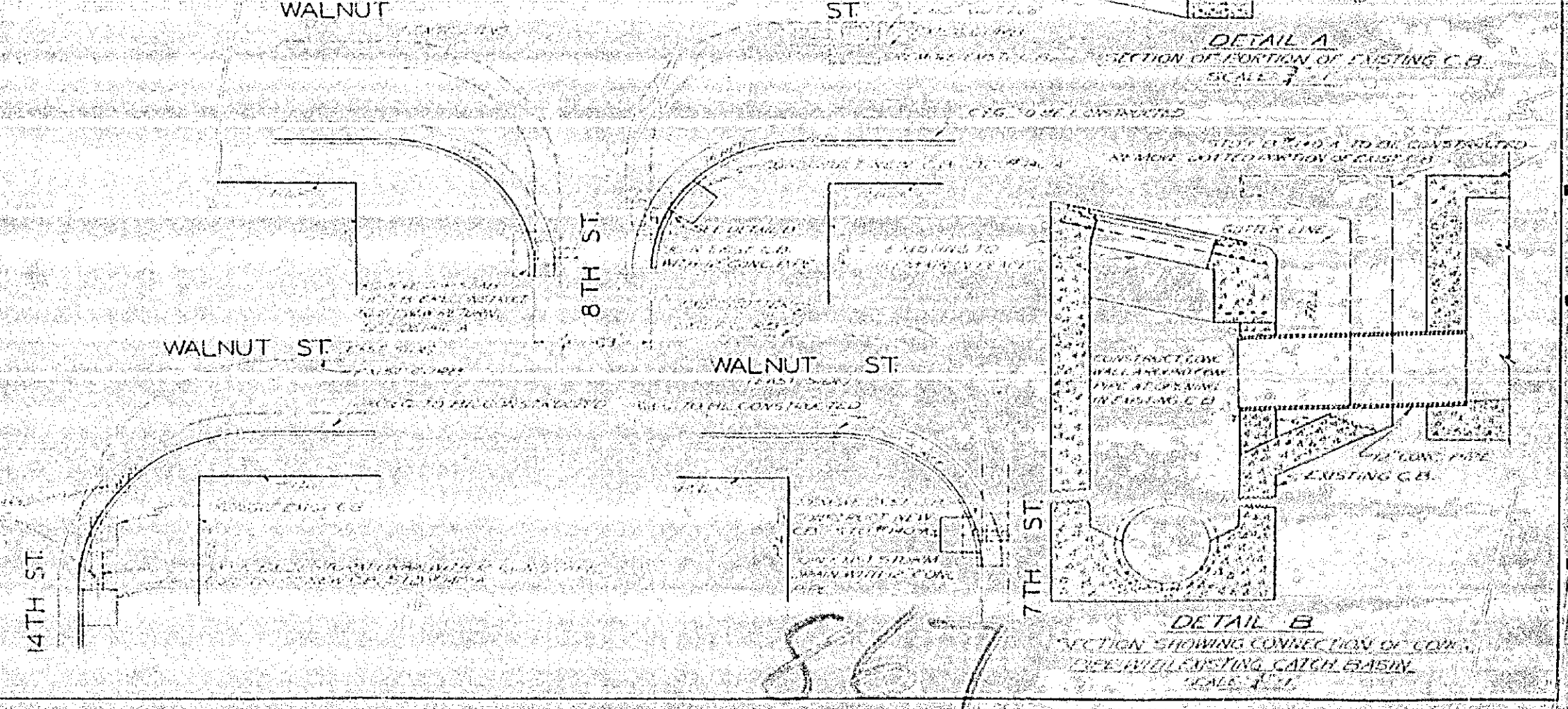
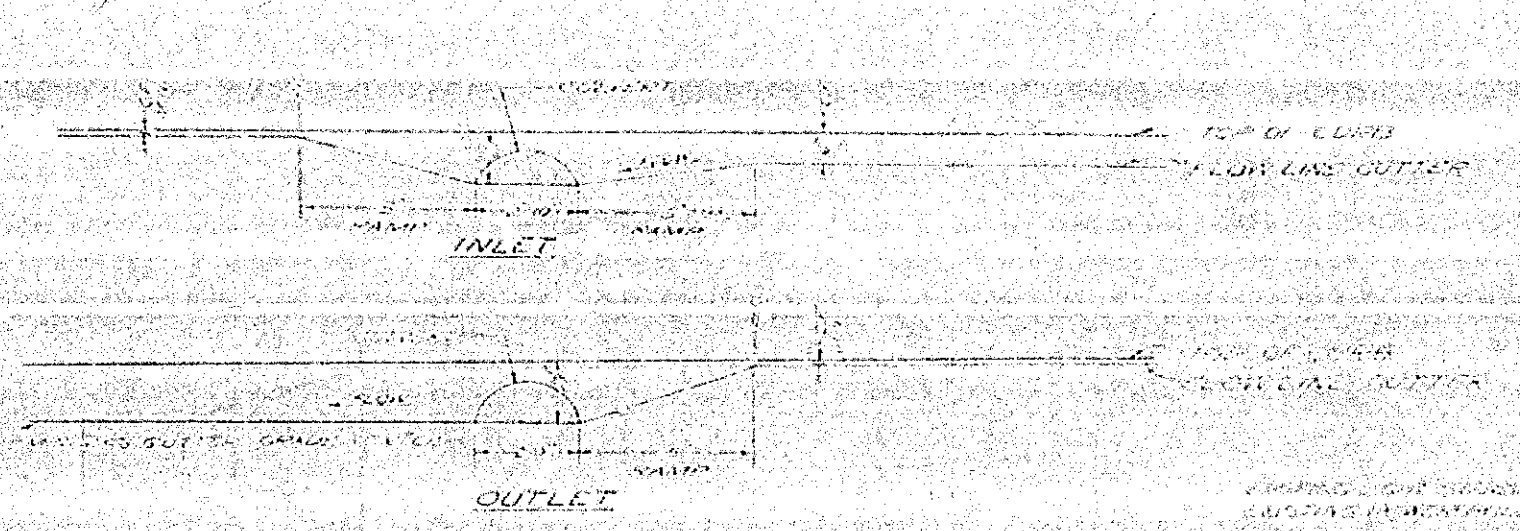
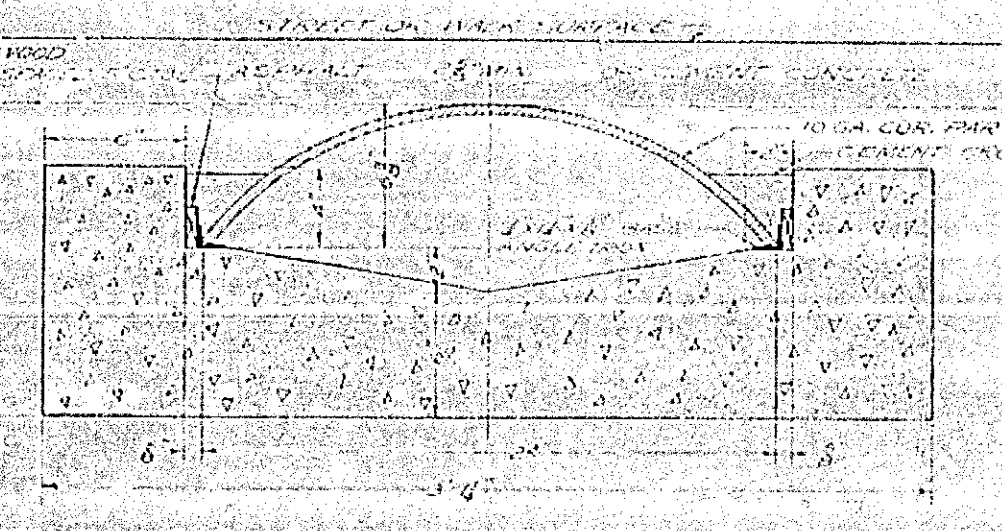
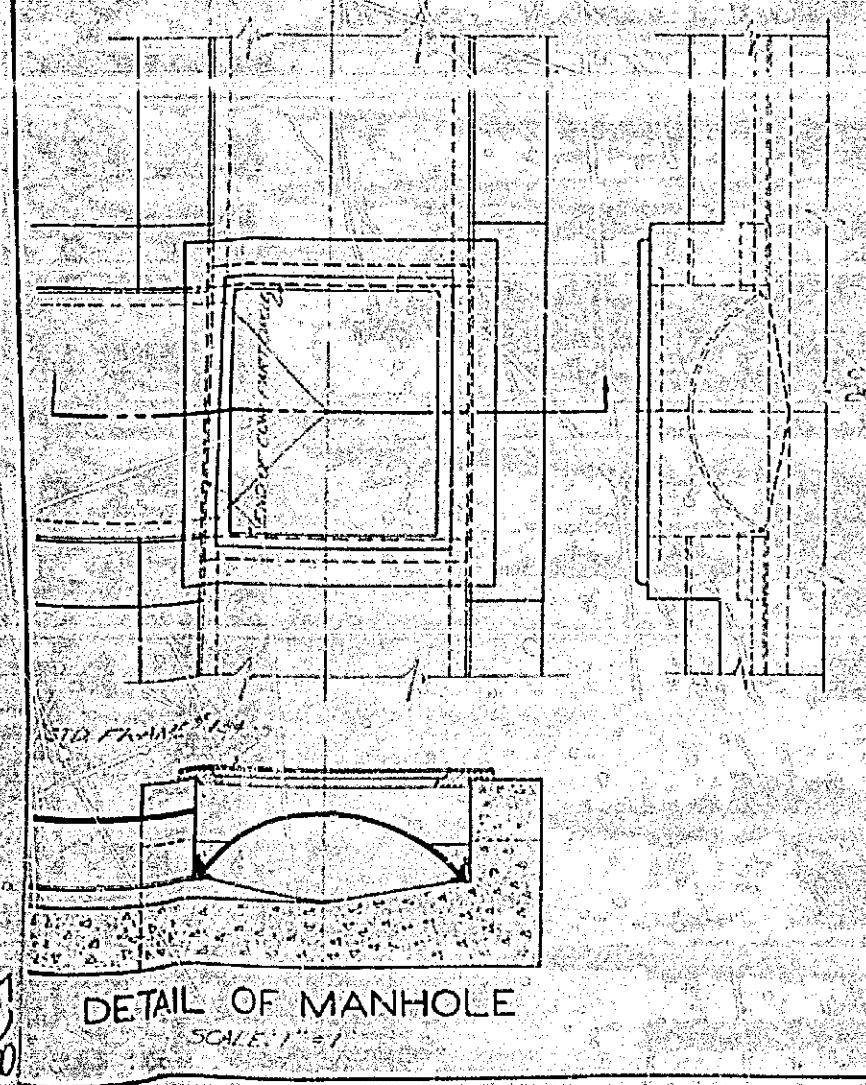
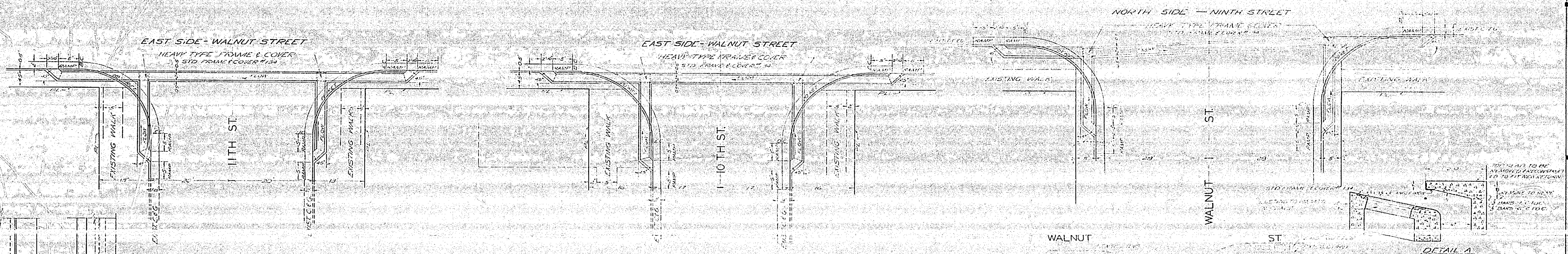
APPROVED: *M. H. Irvine*
M. H. IRVINE, REG. C.E. NO. 3011
CITY ENGINEER

F. B. 502 / 1-16 TOPO

867



SCALE: 1"=10'



867