

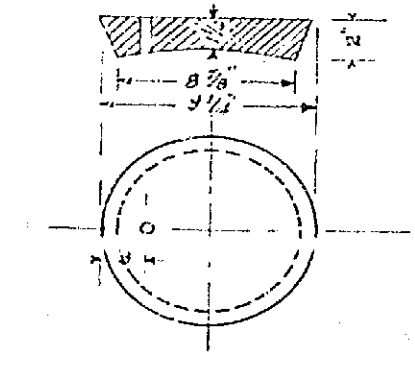
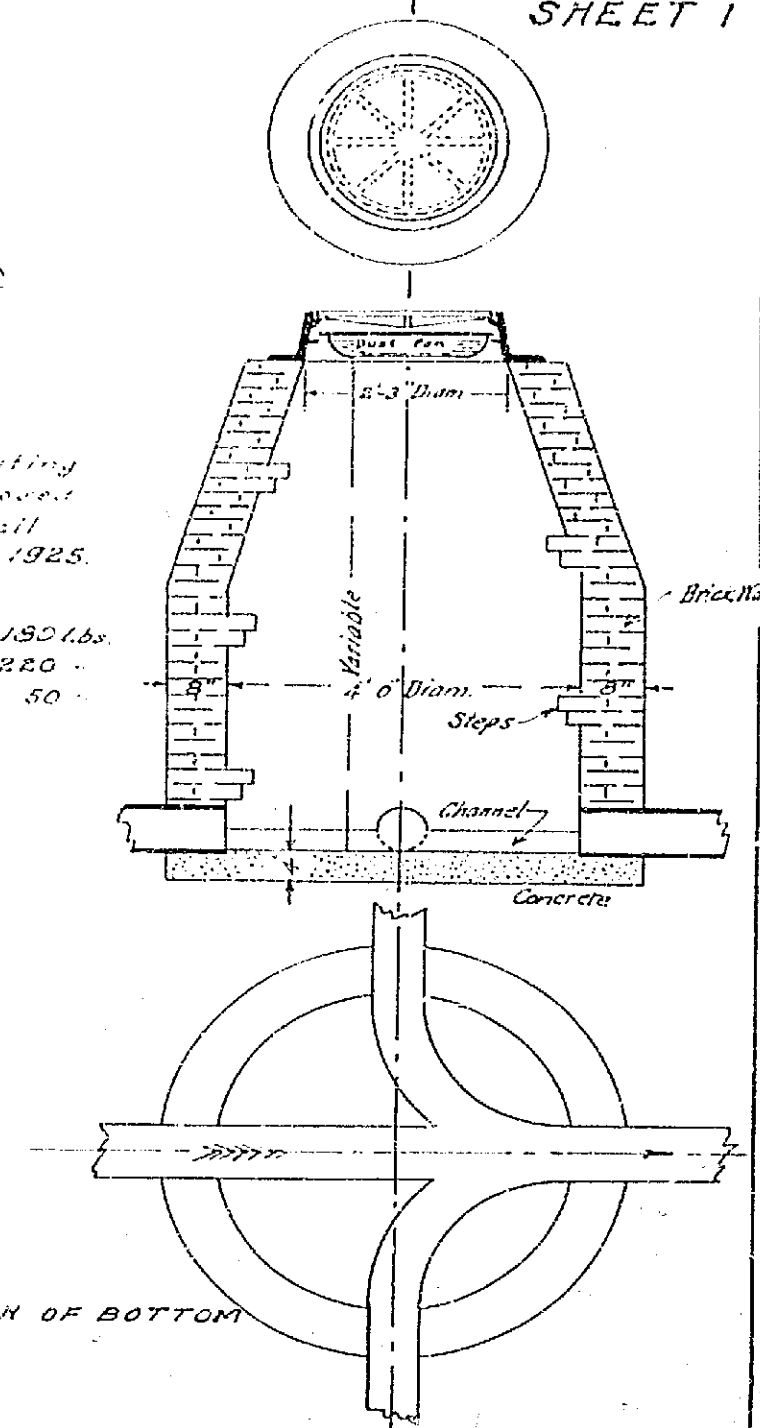
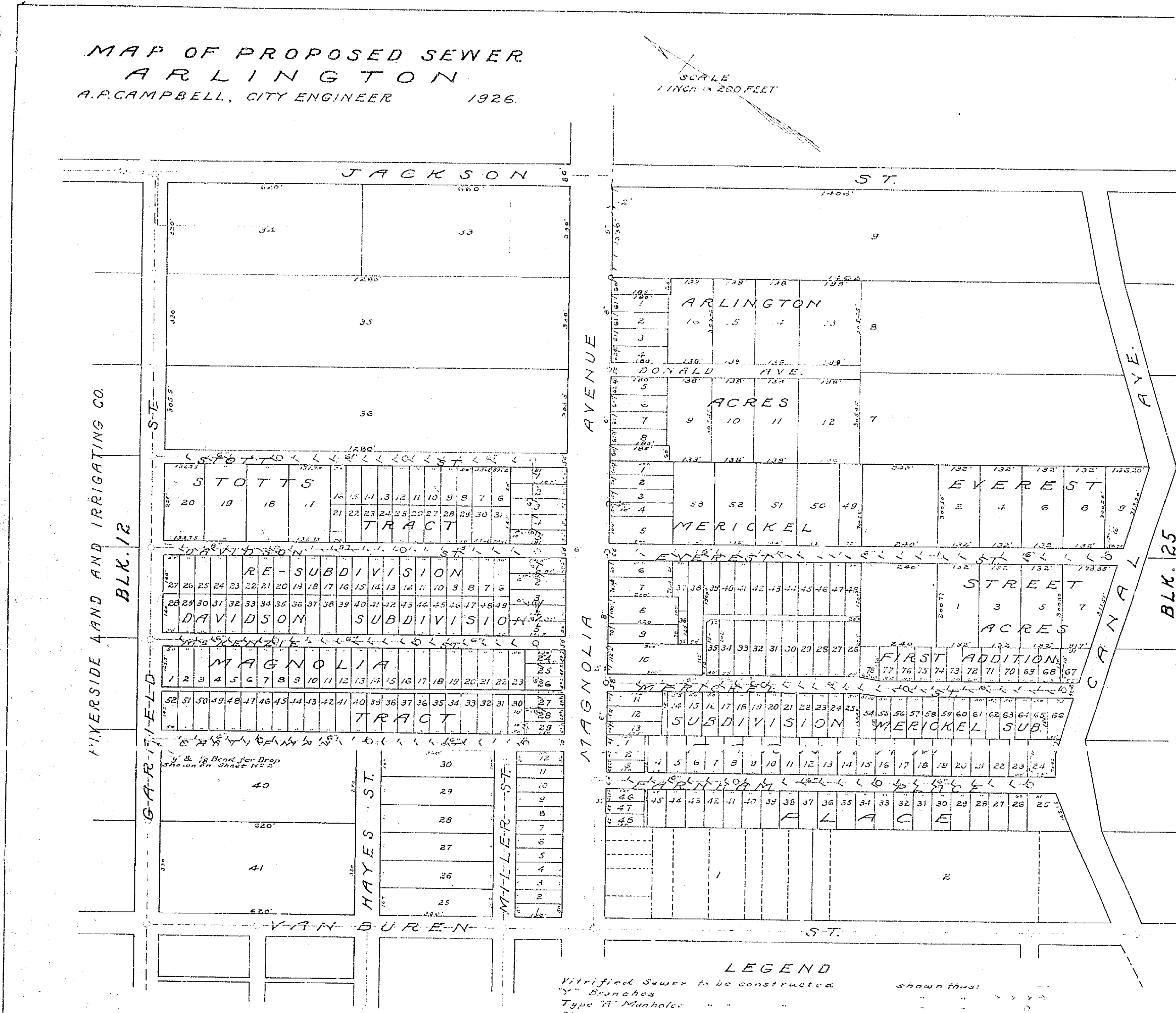
MAP OF PROPOSED SEWER
ARLINGTON
A.P. CAMPBELL, CITY ENGINEER 1926.

2 SHEETS MAP NO. 870
SHEET 1

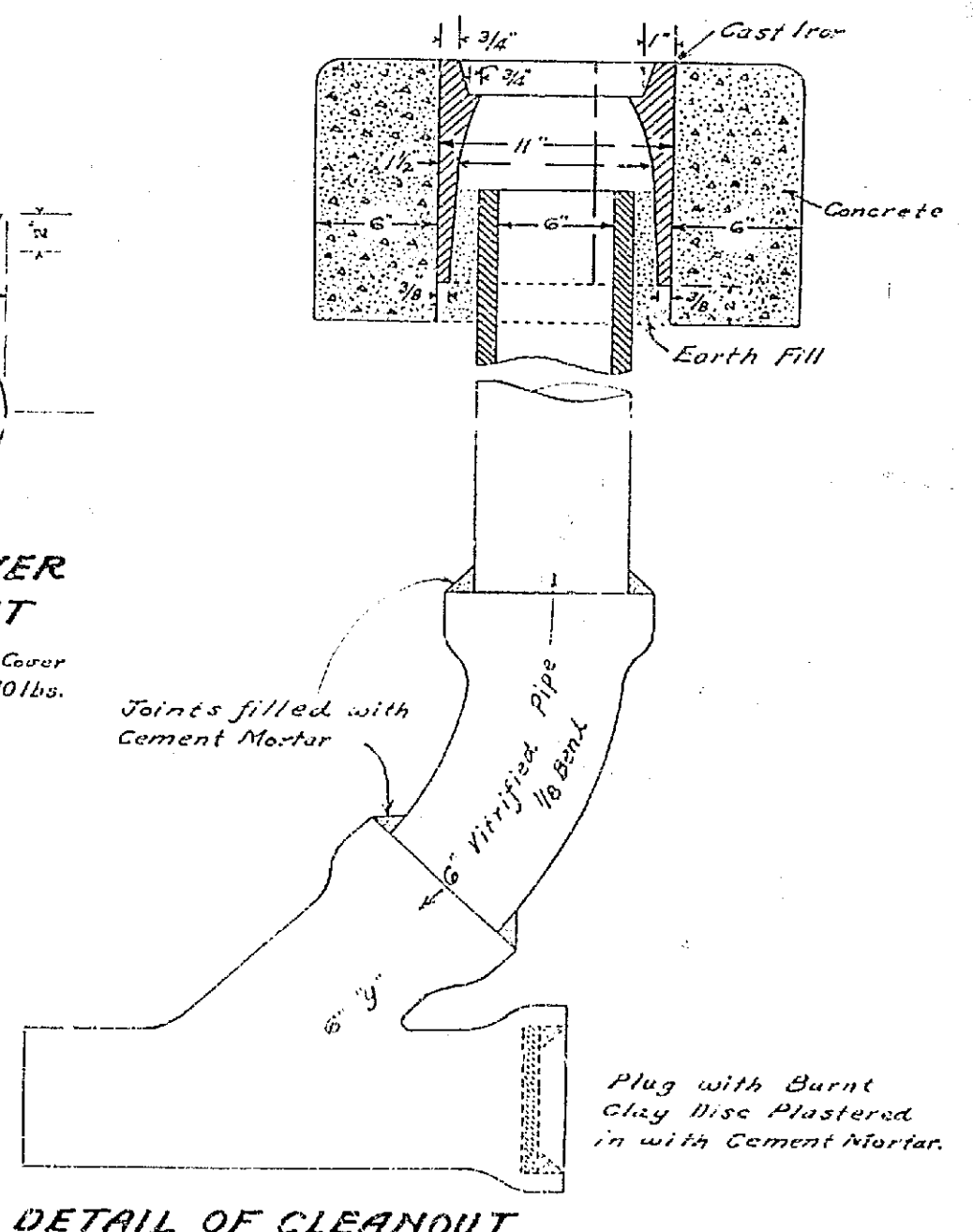
SCALE
1 INCH = 200 FEET

Adopted by the Mayor and Common Council of the City of Riverside this 15th day of June, 1926.
Attest: *(Signature)*
City Clerk.

Note:
See Standard Manhole Head Casting Type II, Drawing N.S. 828 approved by the Mayor and Common Council of the City of Riverside June 30, 1925.
Note:
Cover to weigh not less than 180 lbs.
Frame " " " " " " 220 "
Run " " " " " " 50 "



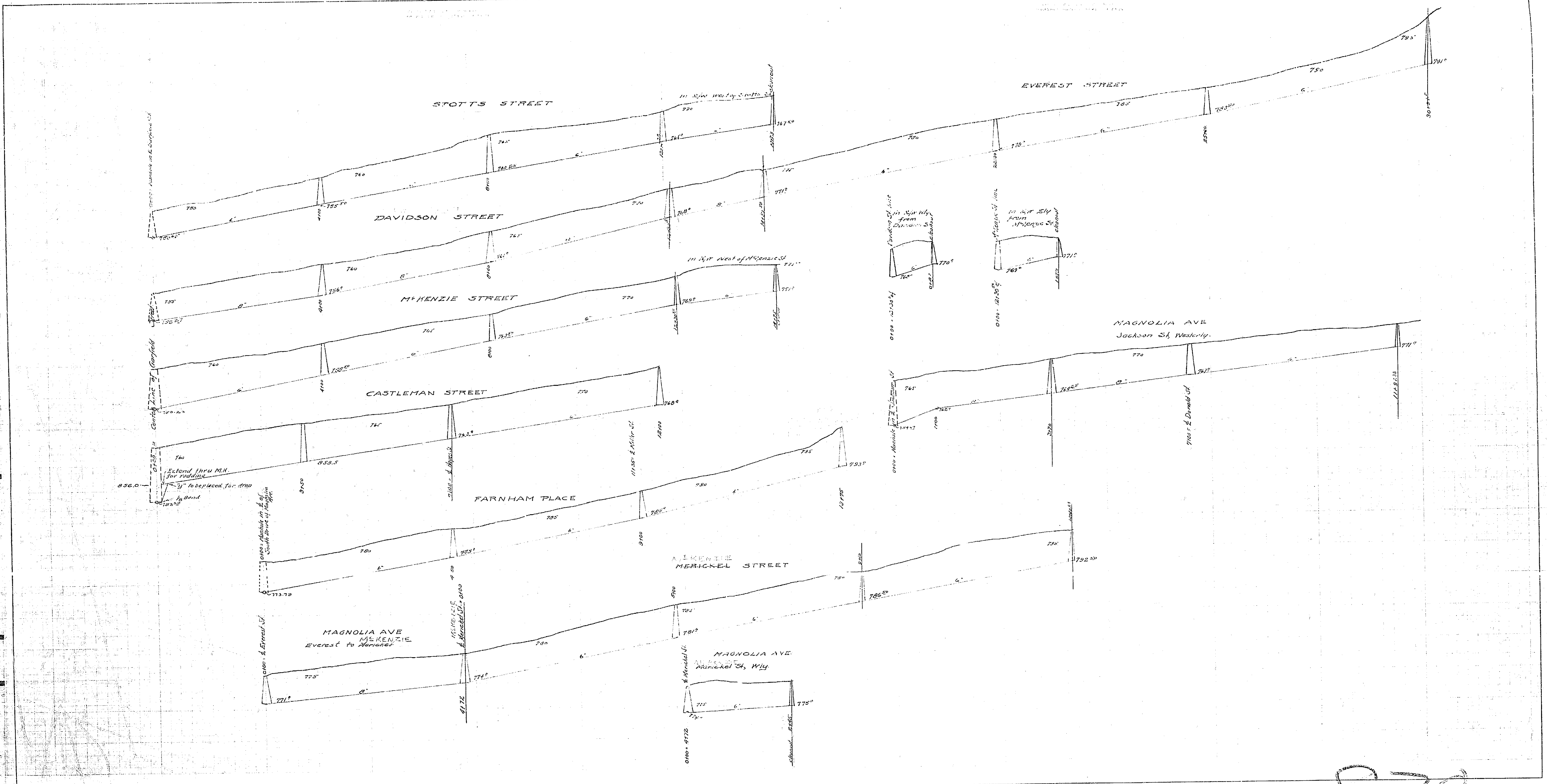
DETAIL OF COVER FOR CLEANOUT
Note: Frame Casting with Cover to weigh not less than 90 lbs.



LEGEND
Vitrified Sewer to be constructed
by Branches
Type II Manholes
Cleanouts
Sewer already constructed
Type II Manholes
Cleanout
District Boundary

SHEET 1
MAP NO. 870 2 SHEETS

870



870