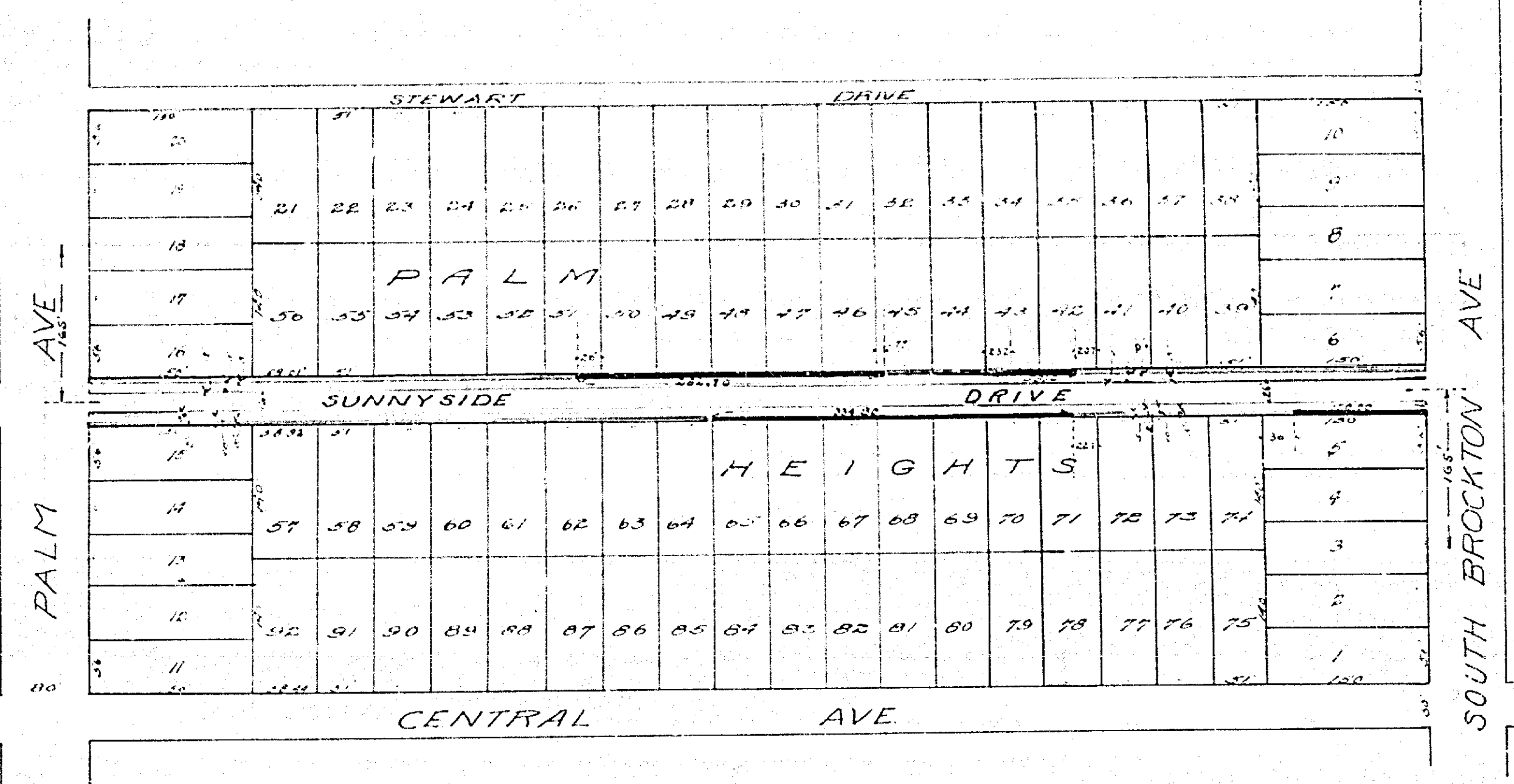
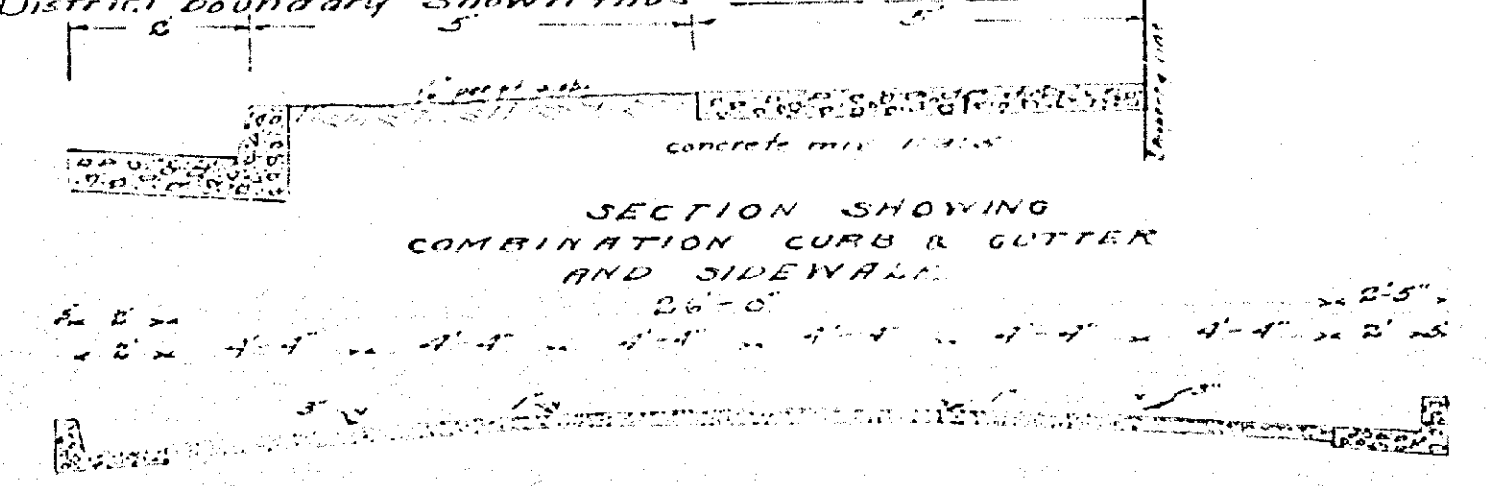


55.
13.
11.
8'2.
12'8
11
11
55

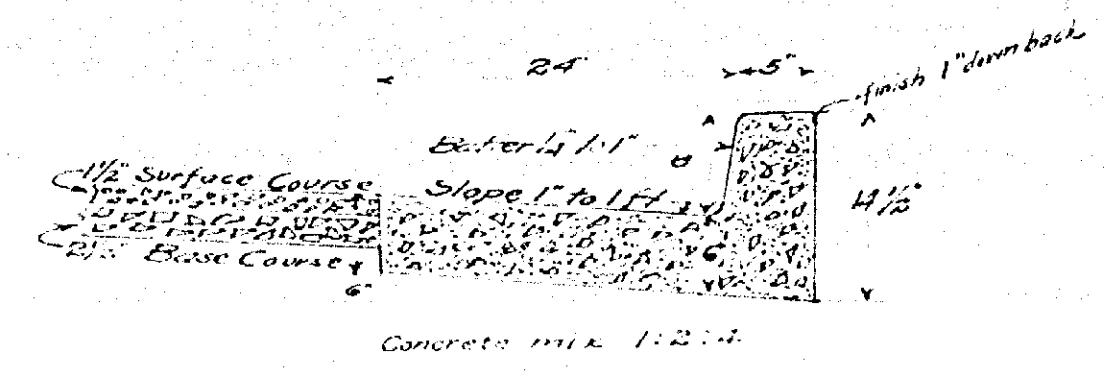
PROPOSED MAP OF
IMPROVEMENT ON
SUNNYSIDE DRIVE
A.P. CAMPBELL, CITY ENGINEER
1926



LEGEND
 Asphaltic concrete roadway to be constructed shown thus
 Concrete combination curb and gutter to be constructed shown thus
 Concrete sidewalk to be constructed shown thus
 Sidewalk already constructed shown thus
 District boundary shown thus



SECTION OF ROADWAY
Scale 1 in = 4 Ft.



DETAILS OF CONSTRUCTION OF
COMBINATION CURB AND GUTTER
AND ASPHALTIC CONCRETE ROADWAY
Scale 1 in = 1 Ft.

Adopted by the Mayor and Common Council of
the City of Riverside, on 29th day of June, 1926
Attest
City Clerk

873