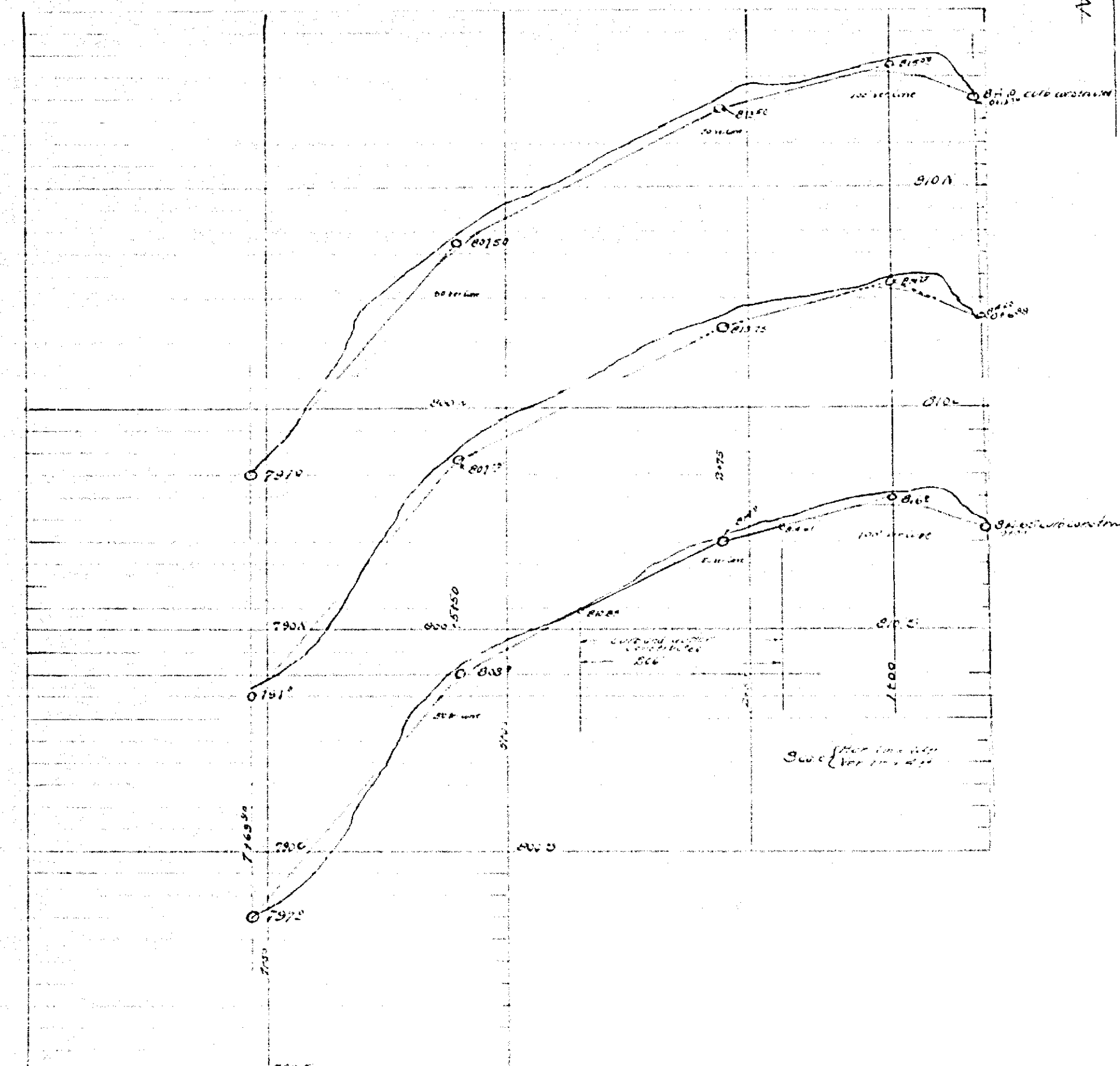
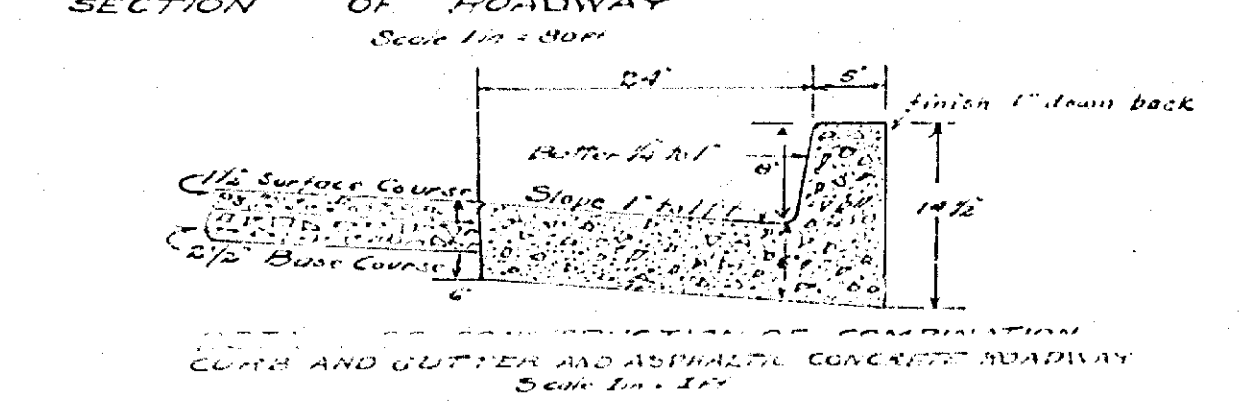
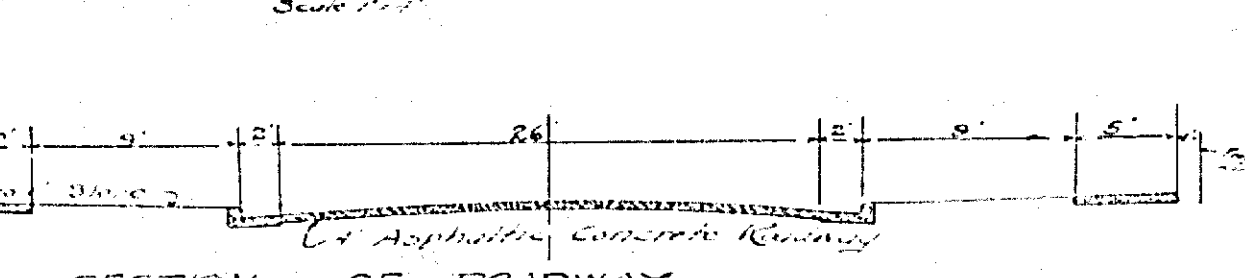
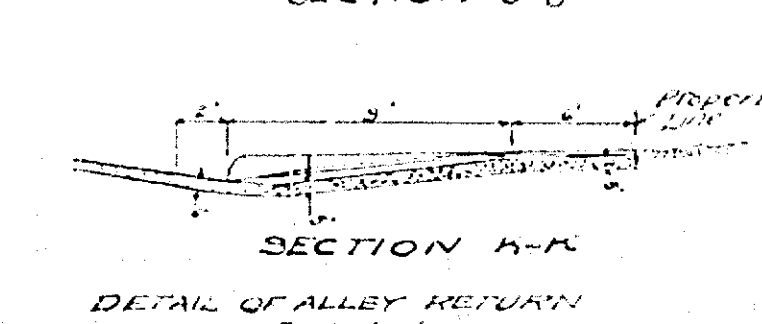
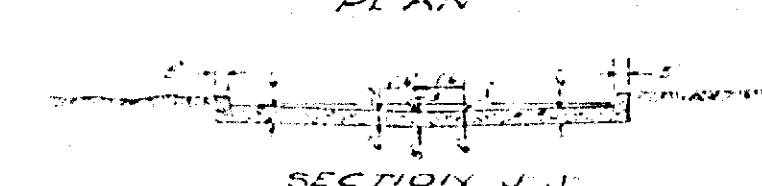
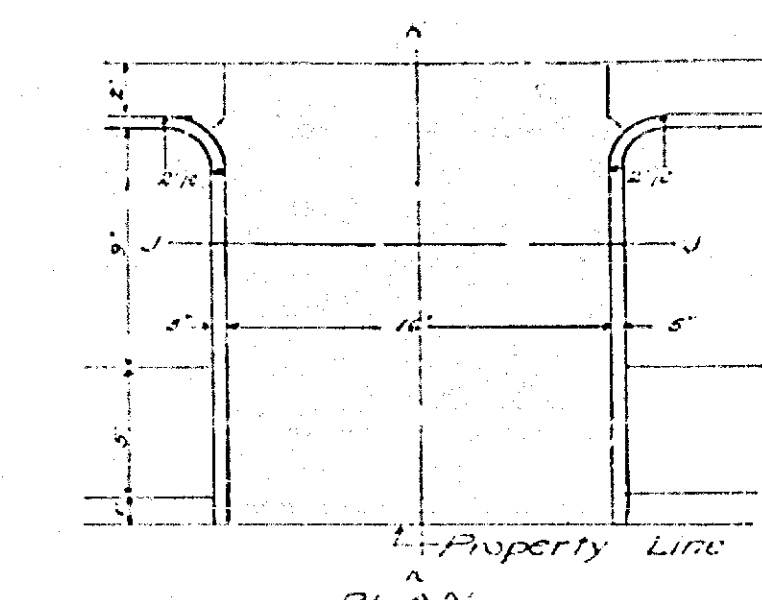
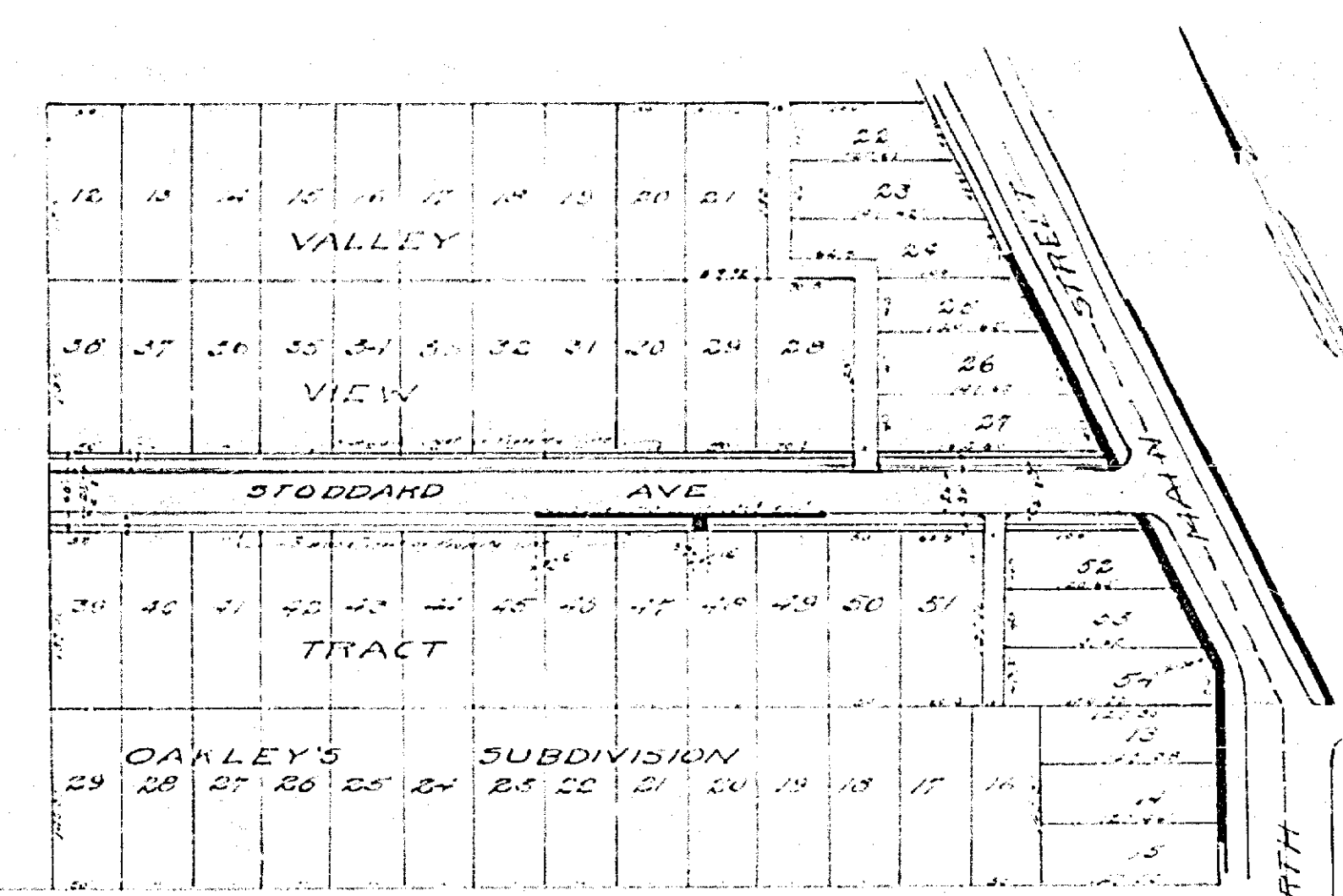


34"
22"
17"
11"
11"
8.5"
11"
17"
22"

MAP N° 874

MAP
SHOWING IMPROVEMENT
ON STODDARD AVE
A. R. CAMPBELL CITY ENGINEER
1926
SCALE 1" = 100'



Approved by the Mayor
and Common Council of
the City of Riverside this
29th day of June 1926
Attest: *S. Quinlan*
City Clerk

LEGEND
Concrete Sidewalk
Asphalt Concrete Curb and Gutter to be constructed shown thus
Asphalt Concrete Roadway
Concrete City Entrance
Proposed Driveway

814

PRC FILE NO.

55.
11.
11.
82.
2.8
11
11
11