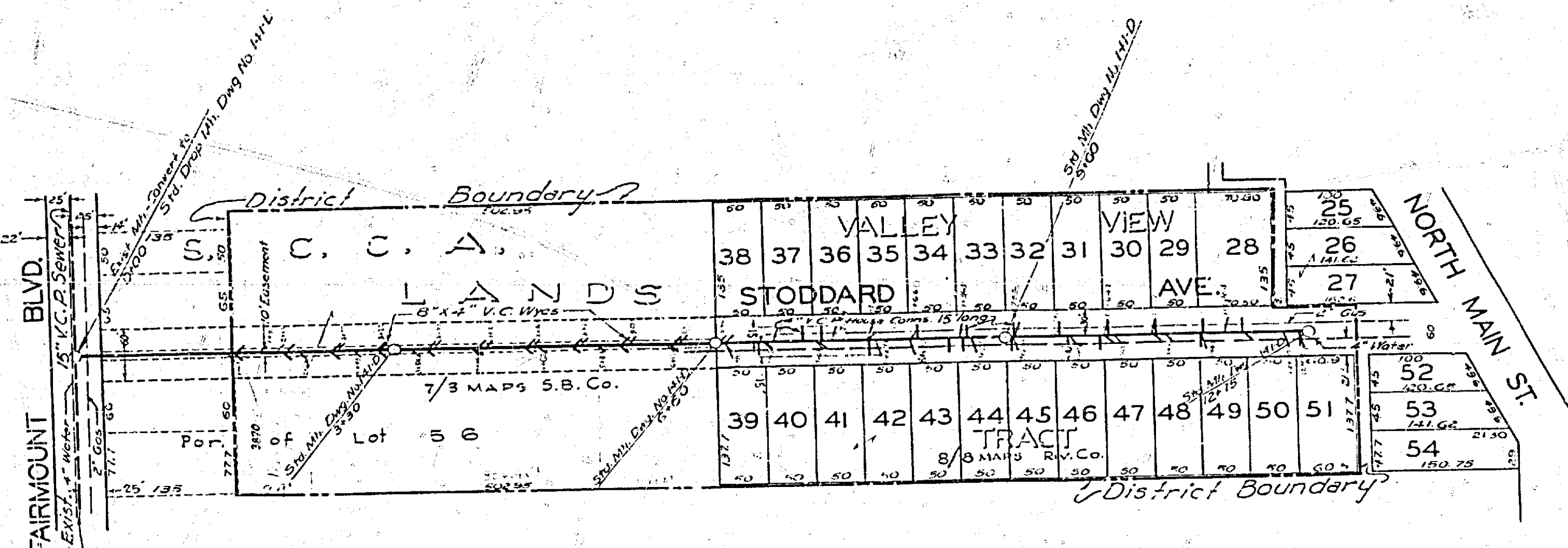


PLAN AND PROFILE
 NO. 874-A
 FOR THE CONSTRUCTION OF
STODDARD AVENUE
SANITARY SEWER DISTRICT
 BETWEEN FAIRMOUNT BLVD. AND MAIN ST.
 RIVERSIDE, CALIFORNIA



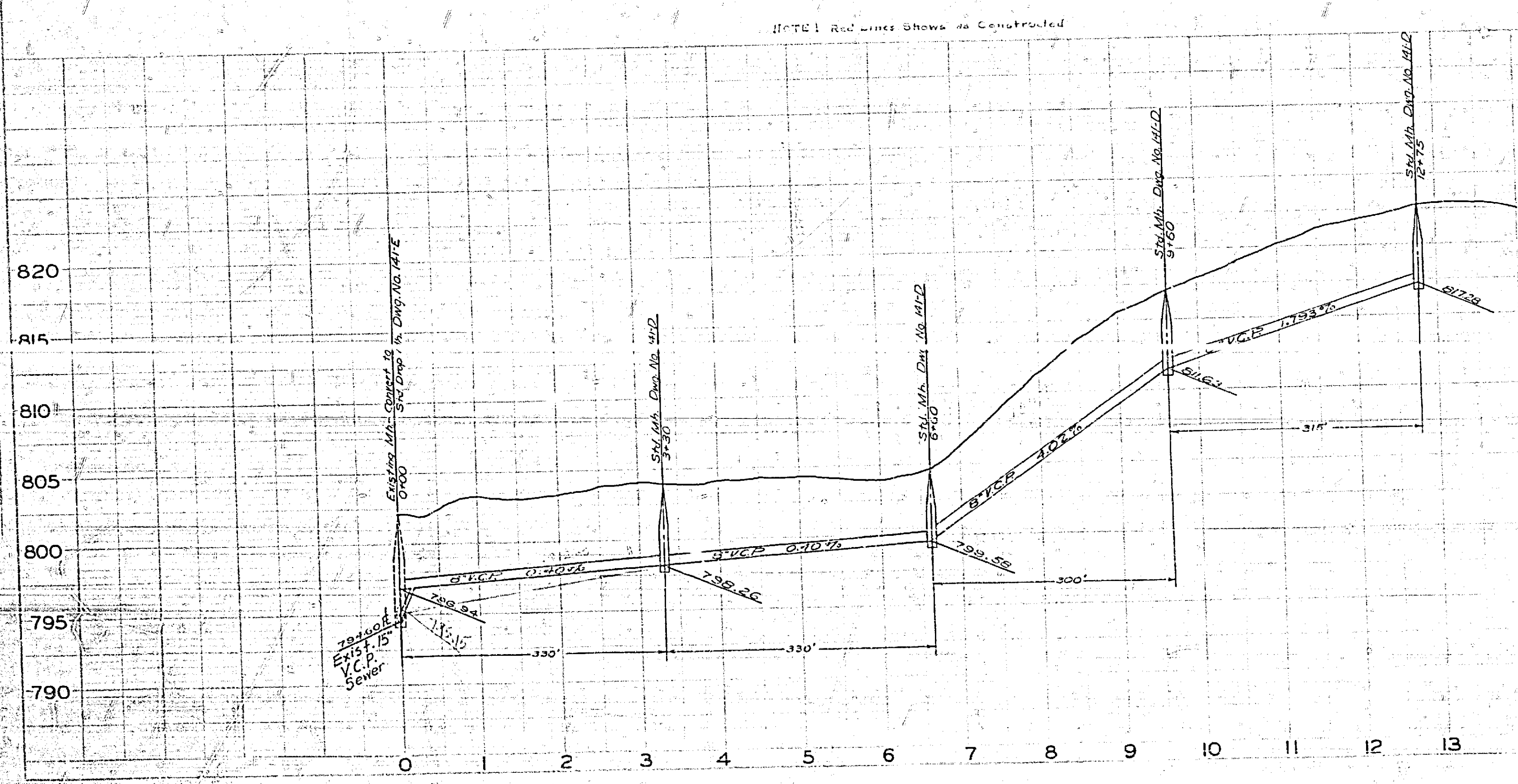
APPROVED: *M. H. Irvine*
 CITY ENGINEER
 A CIVIL ENGINEER REGISTERED UNDER
 THE LAWS OF THE STATE OF CALIFORNIA
 REG. C.E. NO. 3011

THESE PLANS APPROVED AND ACCEPTED BY THE
 MAYOR AND COUNCIL OF THE CITY OF RIVERSIDE,
 STATE OF CALIFORNIA ON THIS 23rd DAY
 OF *August* 1948
W. J. ...
 CITY CLERK

FB. 409 PG. 39

SCALES: HORIZ. 1" = 100'
 VERT. 1" = 5'

NOTE: Red Lines Show as Constructed



874A