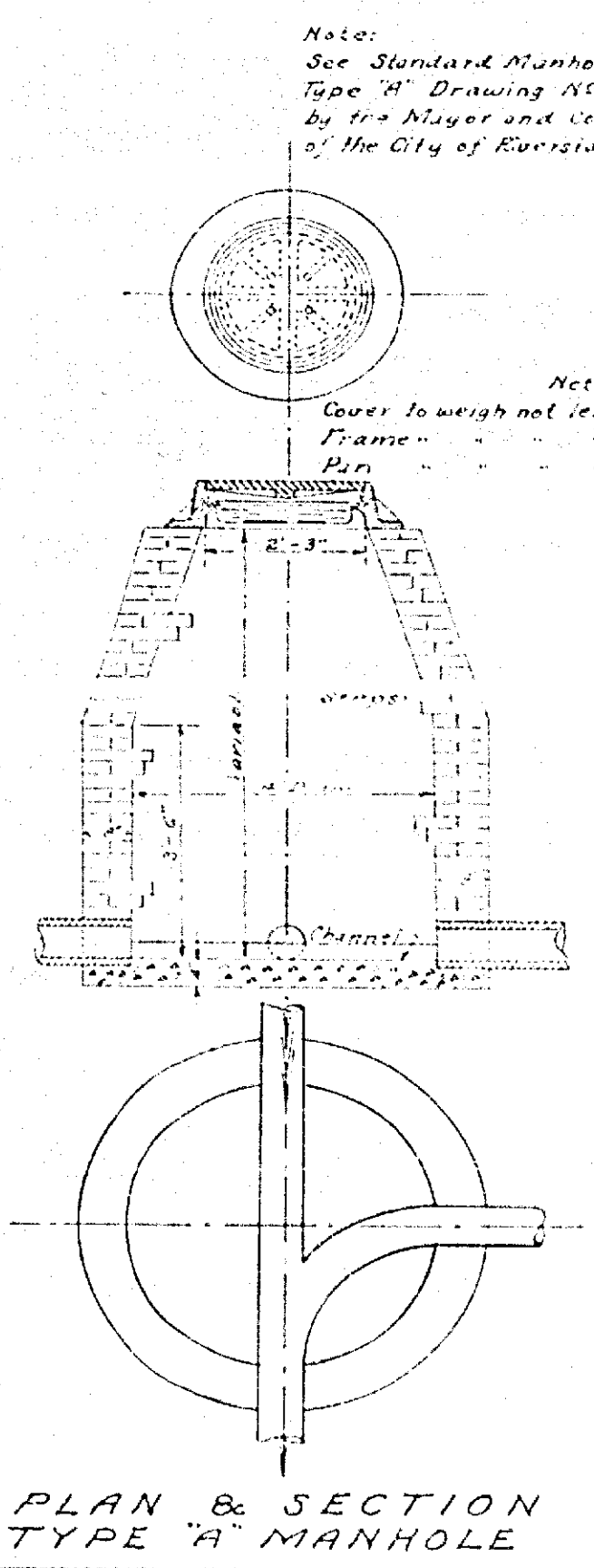
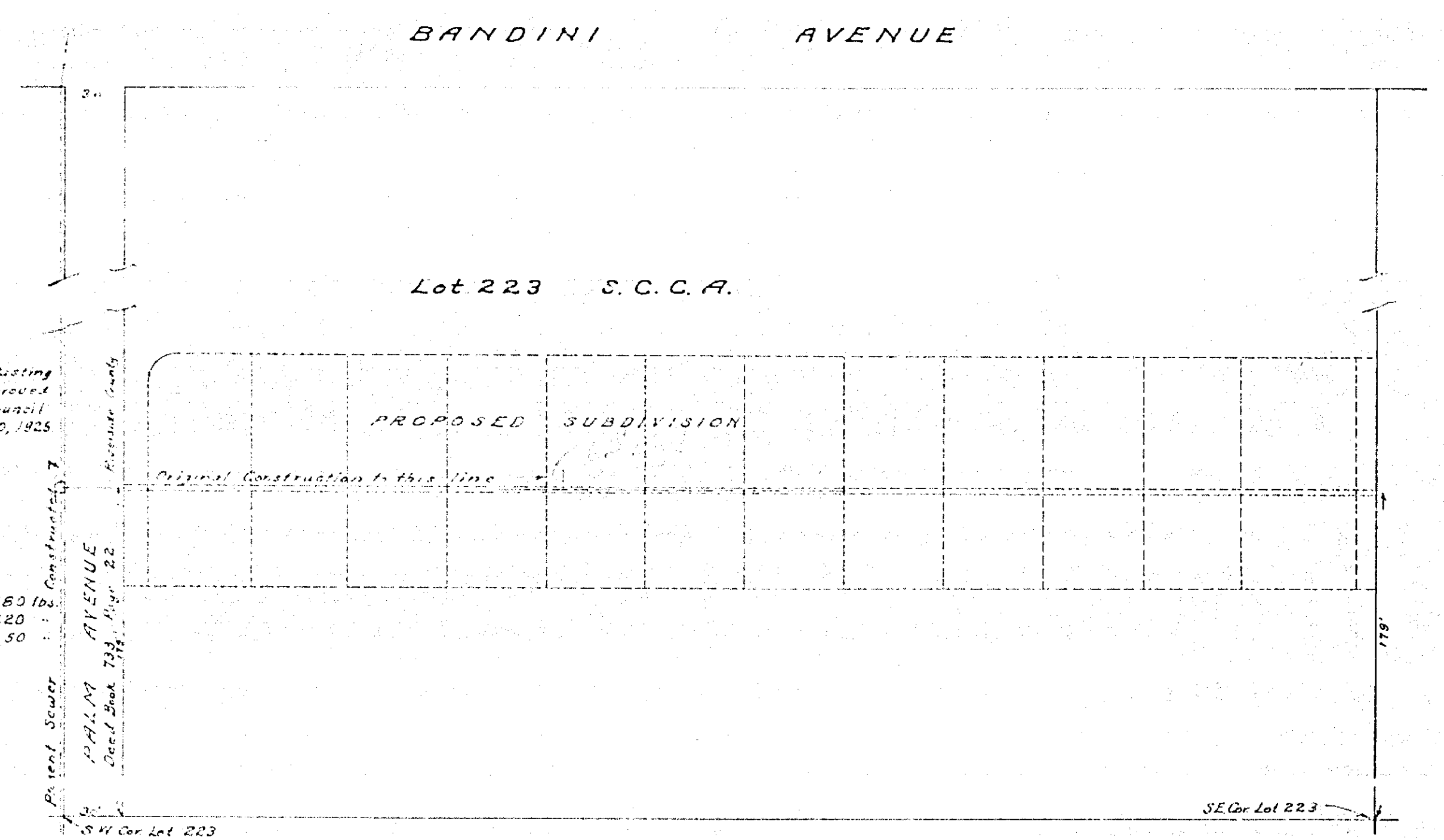


MAP OF PROPOSED SEWER IN
 LOT 223 S.C.C.A. LANDS
 R.E. BROWN, CITY ENGINEER, 1928

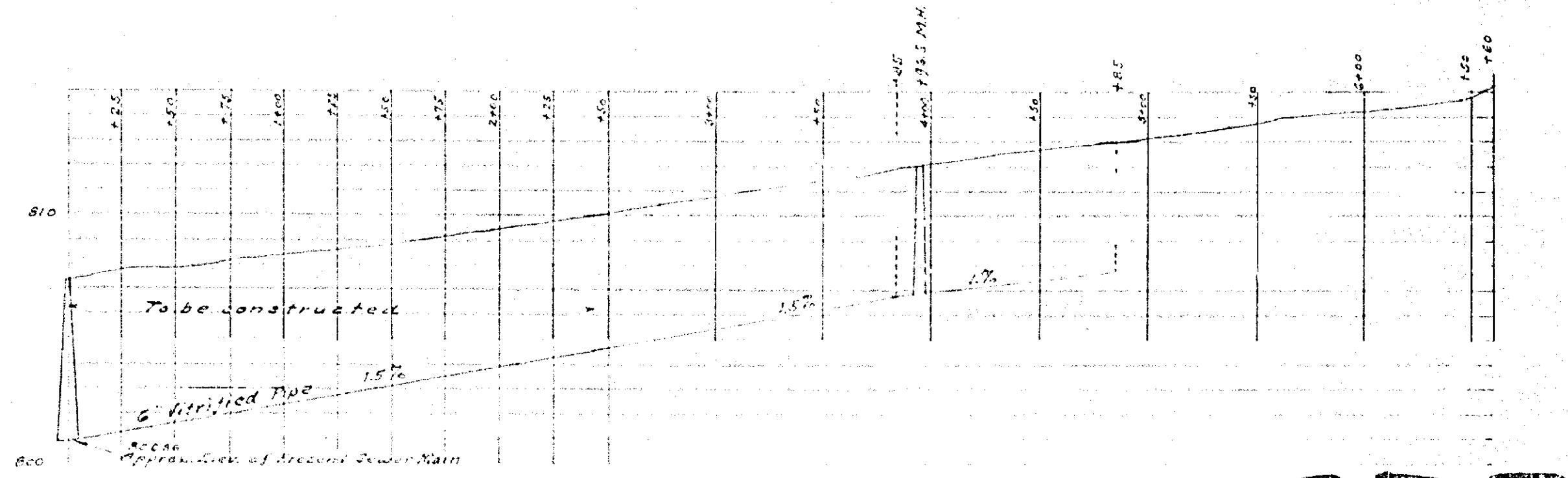
SCALE:
 1 INCH = 40 FEET

Adopted by the Mayor and Common Council
 of the City of Riverside on this 17th day of January, 1928
 Attest: *J. C. McLean*
 Clerk of the City of Riverside



Note:
 See Standard Manhole Head Casting
 Type "H" Drawing No. E29 Approved
 by the Mayor and Common Council
 of the City of Riverside June 30, 1925

Note:
 Covers to weigh not less than 180 lbs.
 Frames " " " " 220 " "
 Pans " " " " 50 " "



877

22"
 17"
 11"
 8.5"
 11"
 17"

55"
 11"
 11"
 8'2"
 11"
 11"
 11"
 11"
 55"