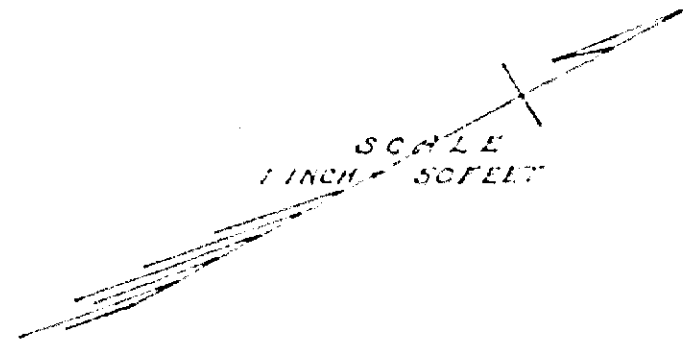
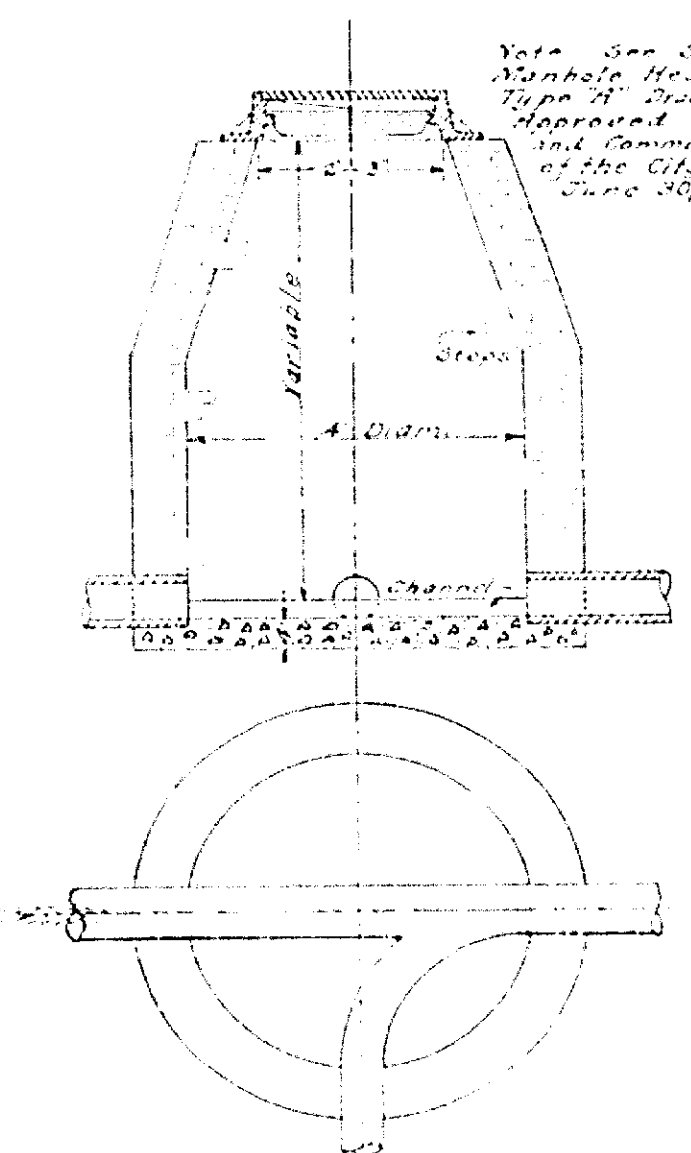


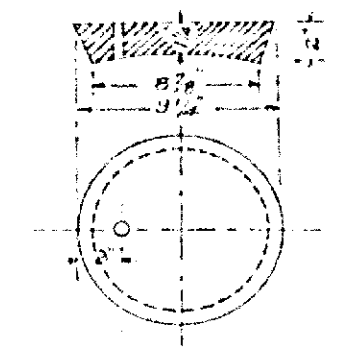
MAP OF PROPOSED SEWER IN HALL'S ADDITION DIV. "C" North from Date St. AR CAMPBELL, CITY ENGINEER. 1926.



Approved by the Mayor and Common Council of the City of Riverside this 14th day of December, 1926. Attest: S. U. ... City Clerk.

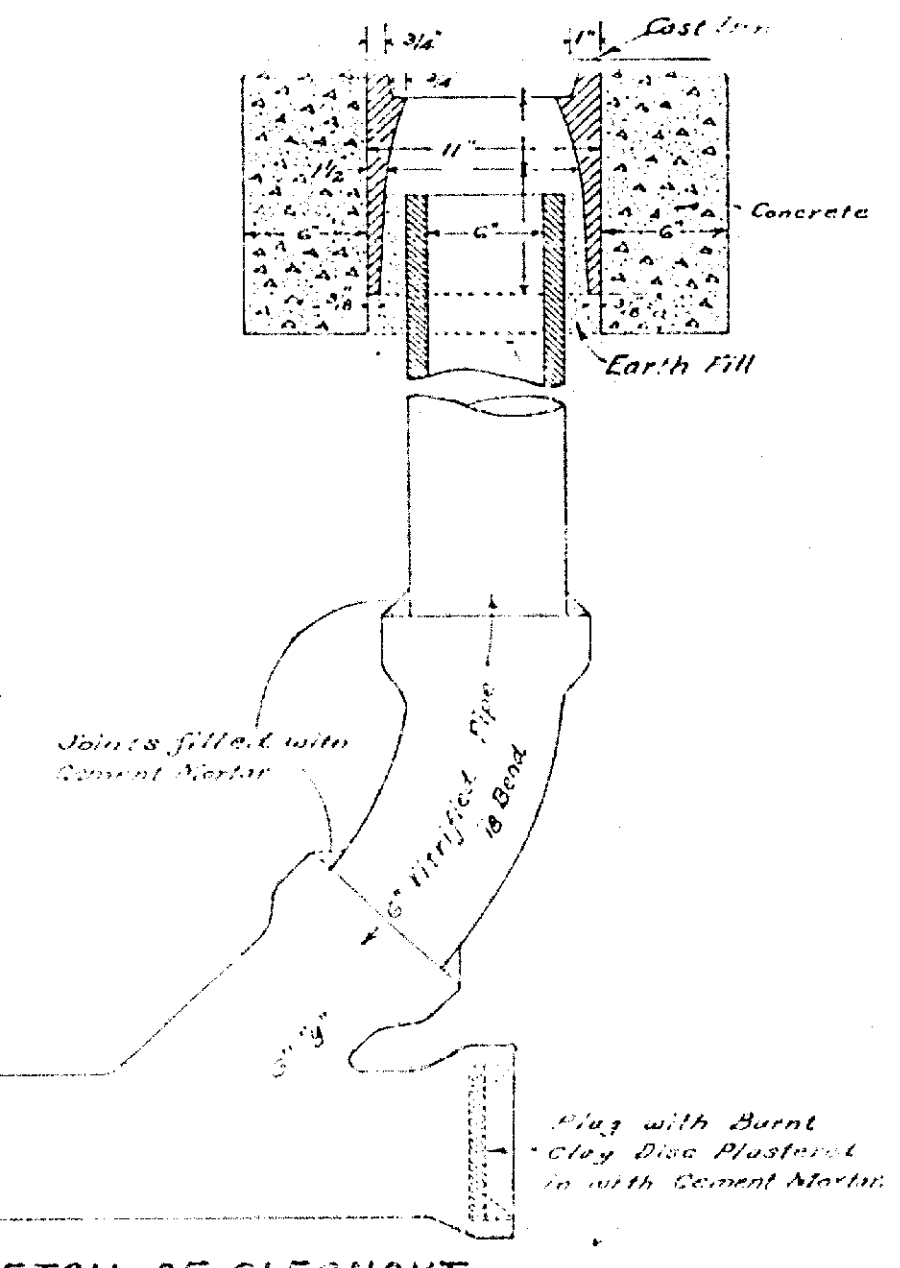


Plan of Type "A" Manhole



DETAIL OF COVER FOR CLEANOUT

Note: Frame casting with cover to weigh not less than 30 lbs.



DETAIL OF CLEANOUT

Joint to fill with Cement Mortar

Plug with burnt Clay Disc Rusted to with Cement Mortar

881