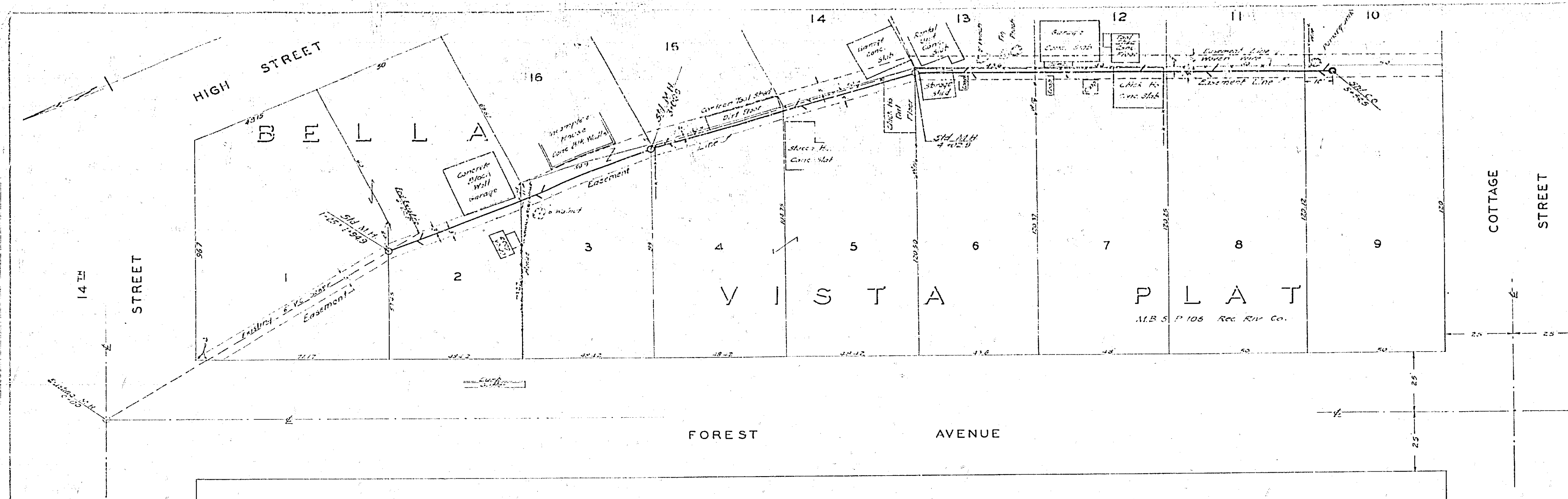
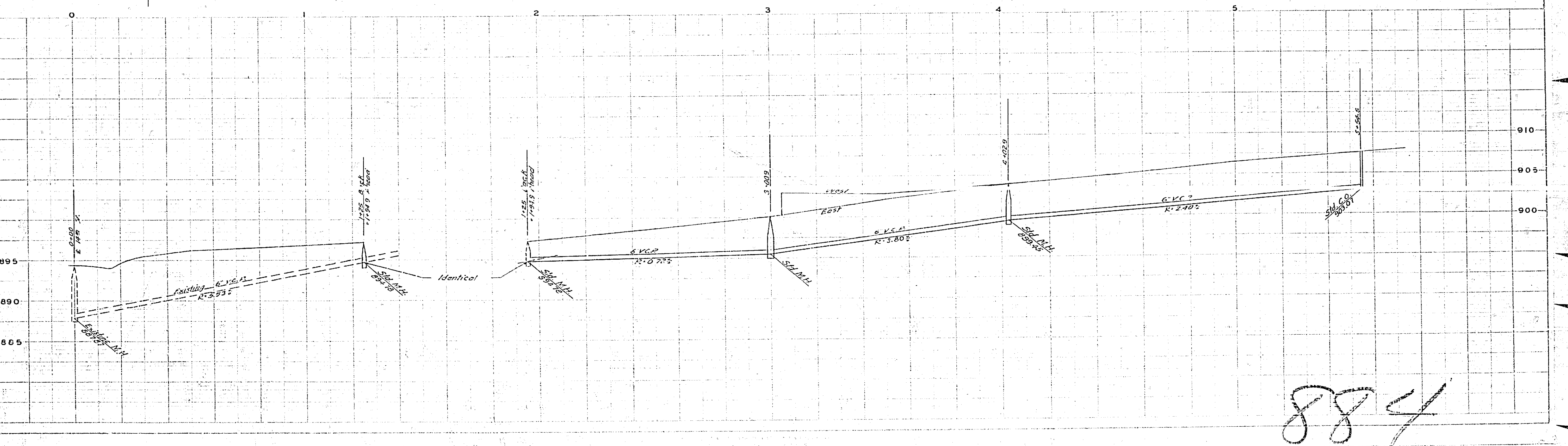


22"
11"
8.5"
11"
8.5"
17"
22"



PLAN AND PROFILE
NO. 884
FOR THE CONSTRUCTION OF A
SANITARY SEWER IN
**BELLA VISTA
PLAT**
RIVERSIDE, CALIFORNIA
F.B. 468-64 NOV. 1952
F.B. 511-74
SCALE: HORIZ. 1 IN. = 20 FT.
VERT. 1 IN. = 5 FT.
APPROVED: J.M. IRVINE, REG. C.E. NO. 3011
CITY ENGINEER
THESE PLANS APPROVED AND ADOPTED BY
THE MAYOR AND COUNCIL OF THE CITY OF
RIVERSIDE, STATE OF CALIFORNIA ON THIS
DAY OF _____ 195
CITY CLERK



884

22"
11"
8.5"
11"
8.5"
17"
22"