

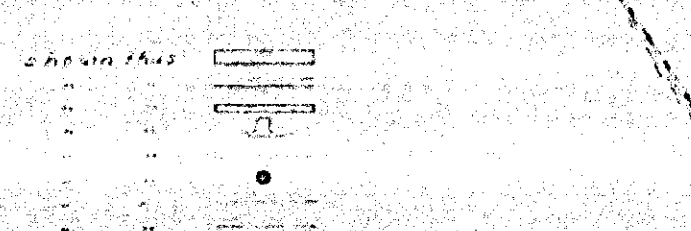
MAP OF PROPOSED IMPROVEMENT ON
BEECHWOOD PLACE
A.P. CAMPBELL, CITY ENGINEER. 1927.

LEGEND
 Macadam Pavement to be constructed
 Concrete Combination Curb & Gutter
 Sidewalk
 Driveway
 Water Curb
 One Light Pole Concrete Standard (Showing 25 GAS Street Light)
 Conductors to be placed
 District Boundary

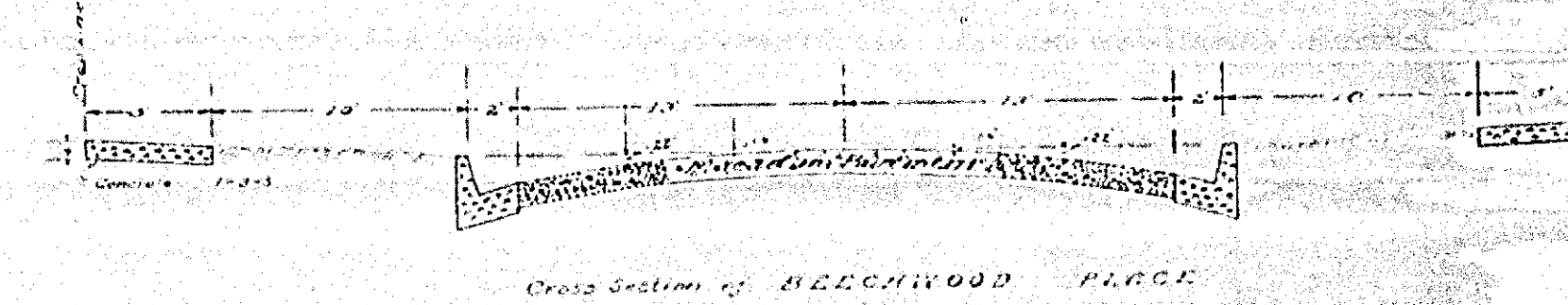
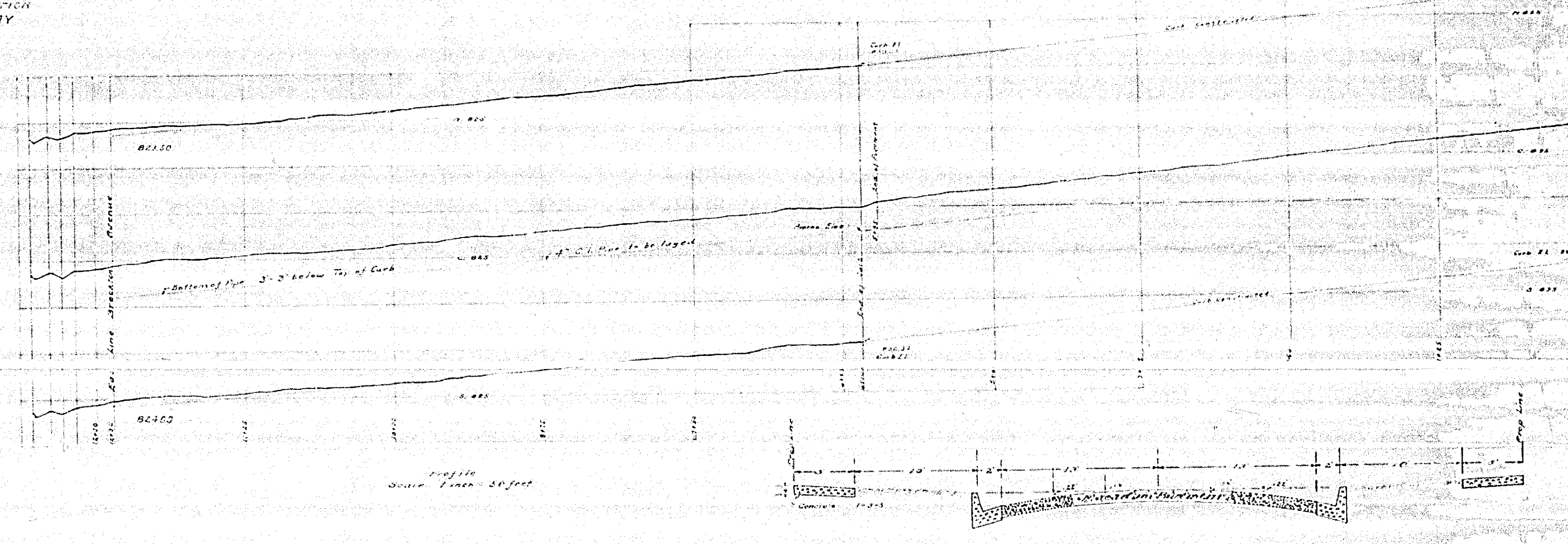
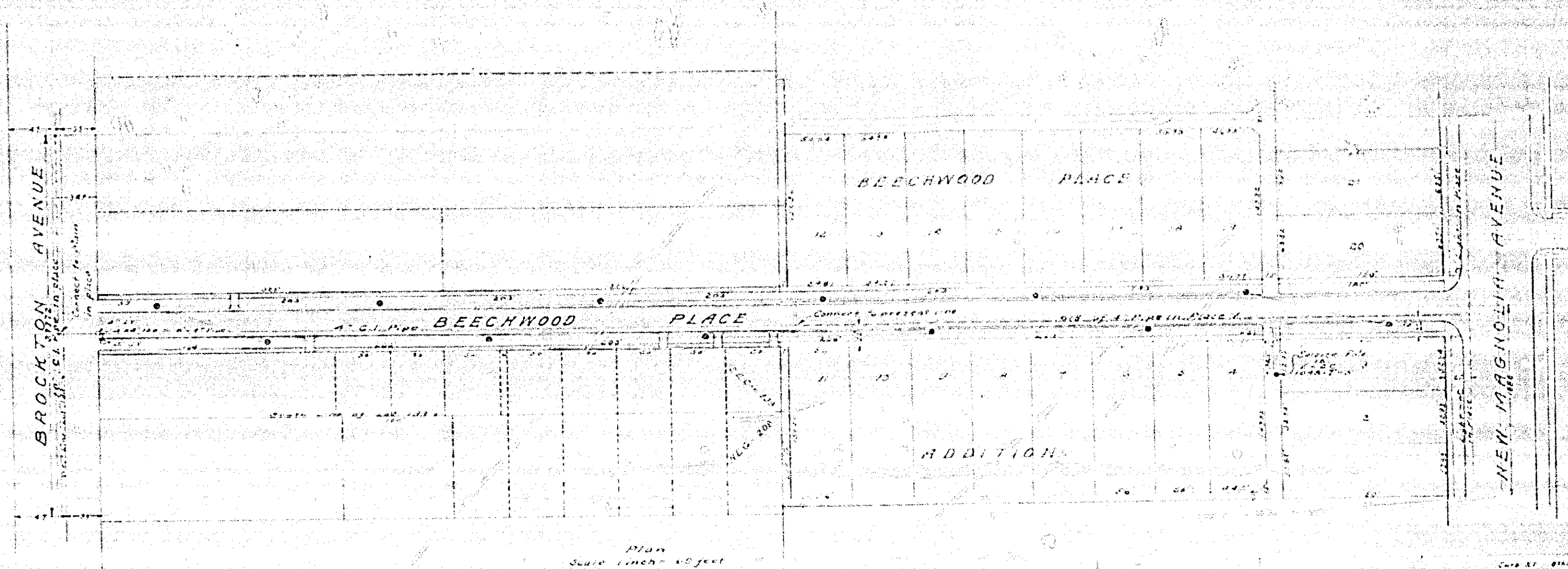
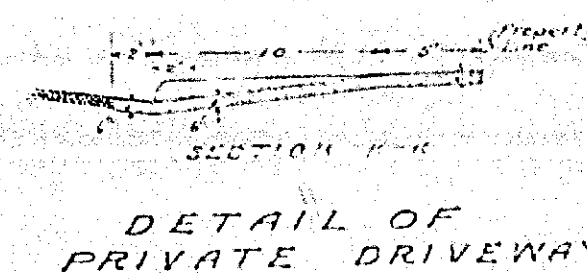
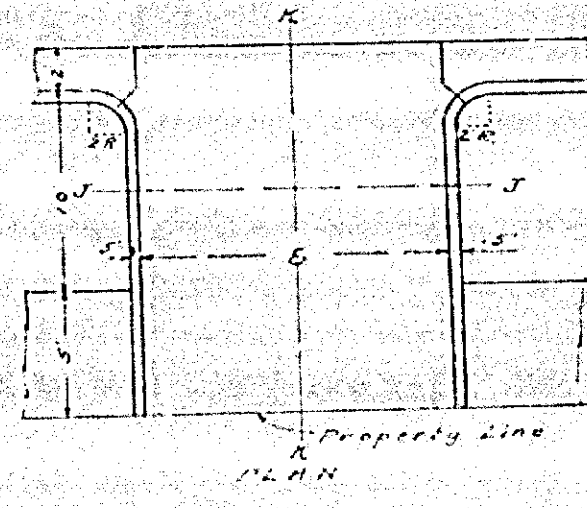
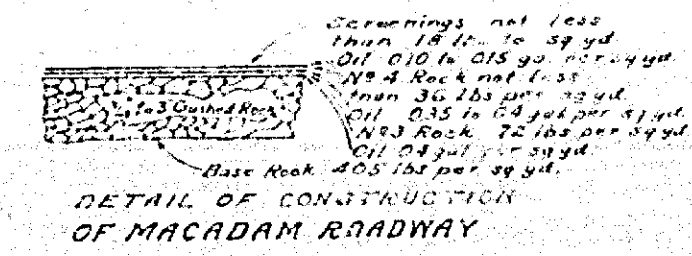
Approved: *E. C. Collins*
 Superintendent of Electric Department

Approved: *W. H. G. ...*
 Superintendent of Water Department

Adopted by the Mayor and Common Council
 of the City of Riverside this 6th day of
 March, 1927.
 Attest: *S. Utter*
 City Clerk



SECTION OF COMBINATION
CURB AND GUTTER



887

MAP No 887

34

34

33

11

11

82

28

11

11

33

34