

### MAP OF PROPOSED LIGHTING SYSTEM SOUTH BROCKTON AVENUE & STEWART DRIVE A. R. CAMPBELL, CITY ENGINEER 1927.

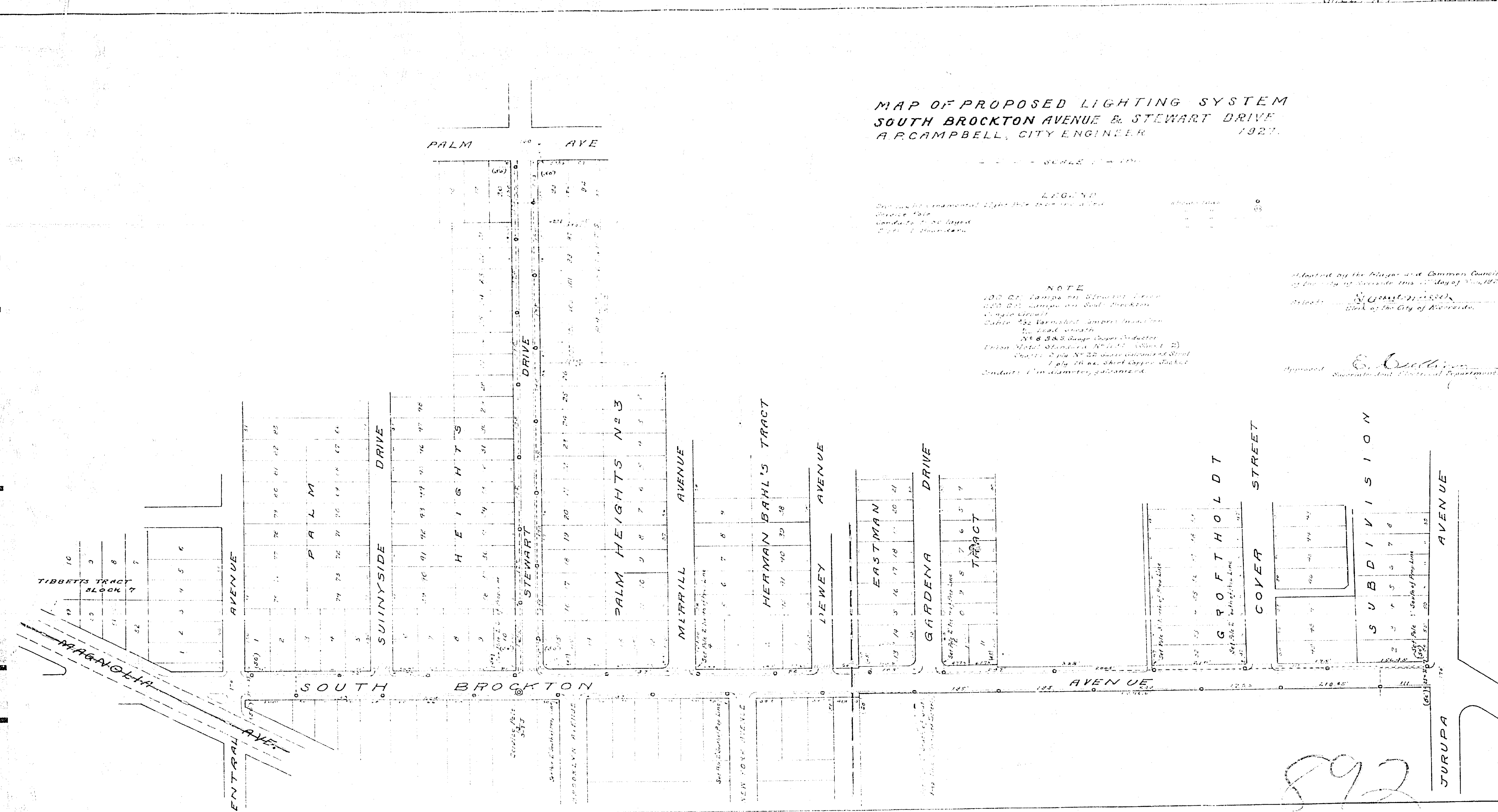
SCALE 1" = 100'

**LEGEND**  
Proposed 2 1/2' diameter lamps on 25' poles  
Proposed 4' poles  
Proposed 1 1/2" diameter lamps on 25' poles  
Proposed 1 1/2" diameter lamps on 25' poles

**NOTE**  
100' C.P. lamps on 25' poles  
100' C.P. lamps on 25' poles  
1 1/2" diameter lamps on 25' poles  
1 1/2" diameter lamps on 25' poles  
1 1/2" diameter lamps on 25' poles  
1 1/2" diameter lamps on 25' poles  
1 1/2" diameter lamps on 25' poles  
1 1/2" diameter lamps on 25' poles  
1 1/2" diameter lamps on 25' poles  
1 1/2" diameter lamps on 25' poles

Approved by the Mayor and Common Council  
of the City of Brockton this 11th day of May, 1927.  
City Engineer  
A. R. Campbell

Approved  
Superintendent of Street Department  
E. O. Williams



22"  
11"  
8.5"  
11"  
8.5"  
17"  
22"

35.  
11.  
11.  
9.2.  
8.2.  
11.  
17.  
35.

892