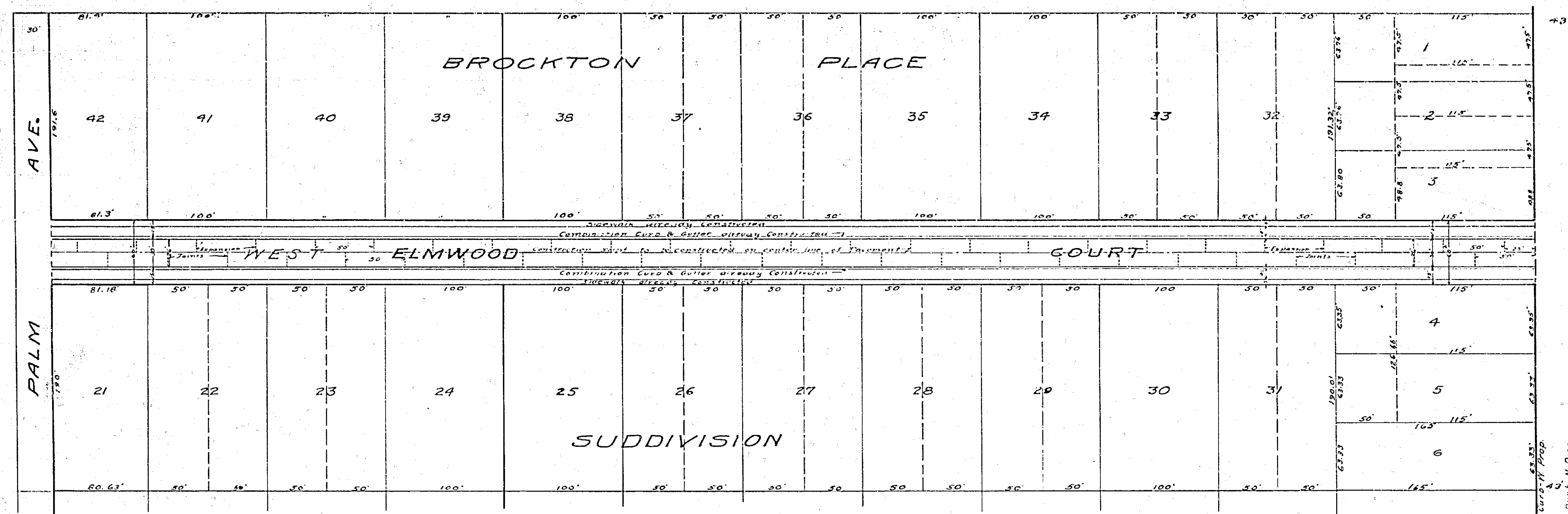
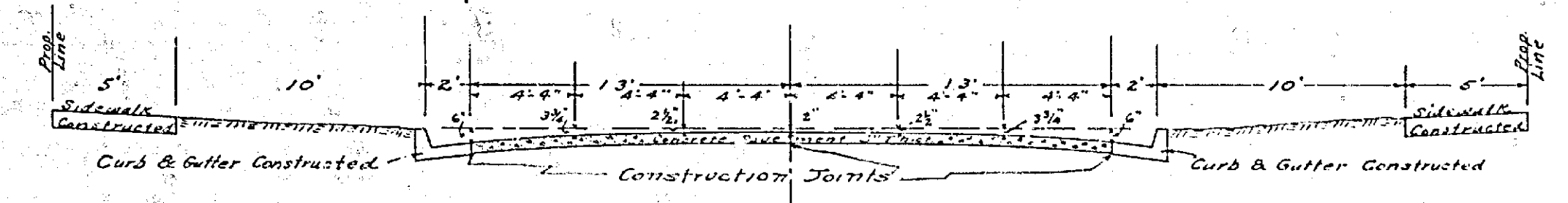
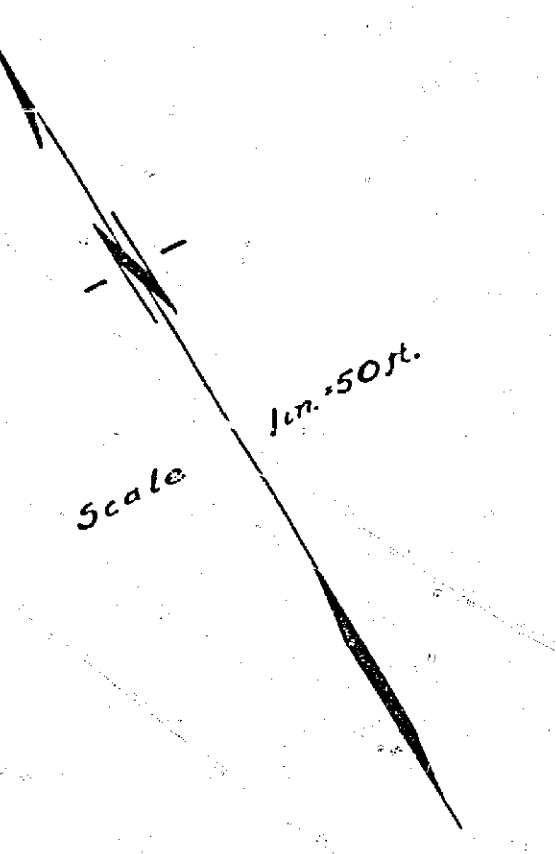


MAP OF THE PROPOSED IMPROVEMENT OF  
WEST ELMWOOD COURT  
A. P. CAMPBELL CITY ENGINEER 1927.

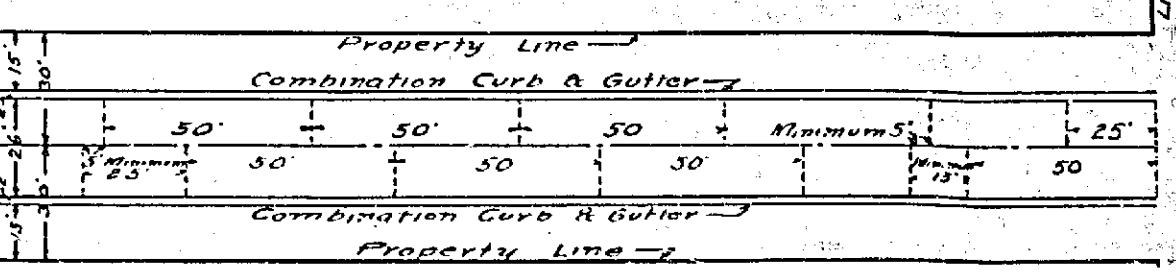
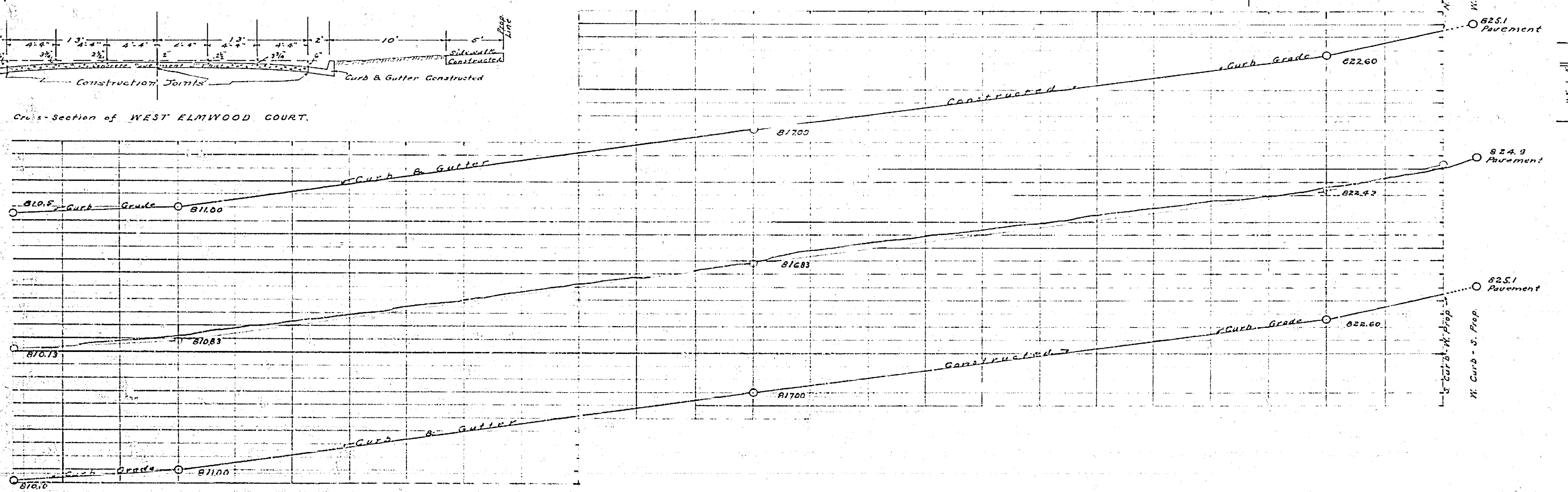
Adopted by the Mayor and Common Council  
of the City of Providence on this 16th day of August 1927.  
Attest: *J. J. M. [Signature]*  
Clerk of the City of Providence.



LEGEND  
5" Concrete Roadway to be constructed shown thus: [Symbol]  
District Boundary [Symbol]



Cross-Section of WEST ELMWOOD COURT.



TYPICAL SPACING OF EXPANSION JOINTS  
Expansion Joints shown thus:  
Note: Before opening street all Expansion Joints shall be filled flush with pavement.

895