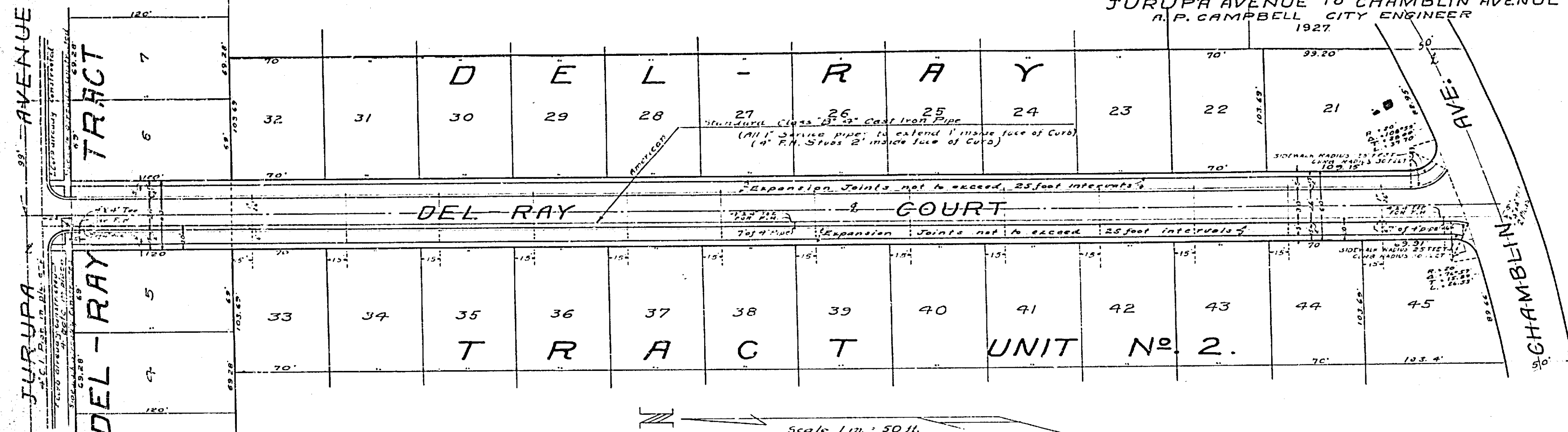
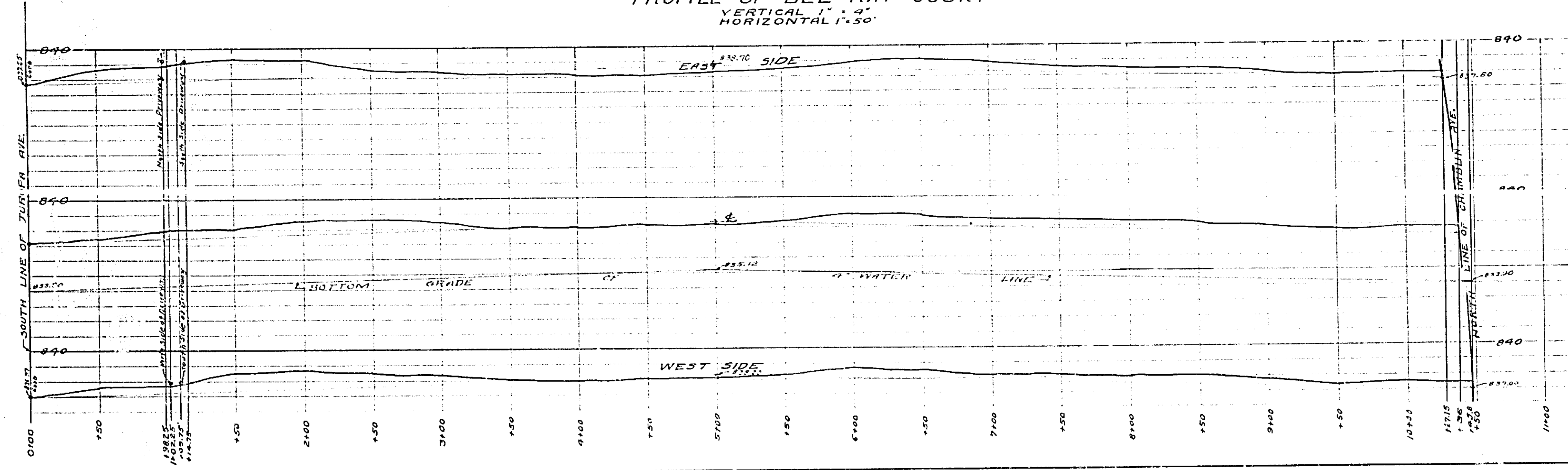


MAP OF PROPOSED IMPROVEMENT ON DEL-RAY COURT JURUPA AVENUE TO CHAMBLIN AVENUE A. P. CAMPBELL, CITY ENGINEER 1927.



Scale 1 in. = 50 ft.

PROFILE OF DEL-RAY COURT VERTICAL 1" = 4' HORIZONTAL 1" = 50'

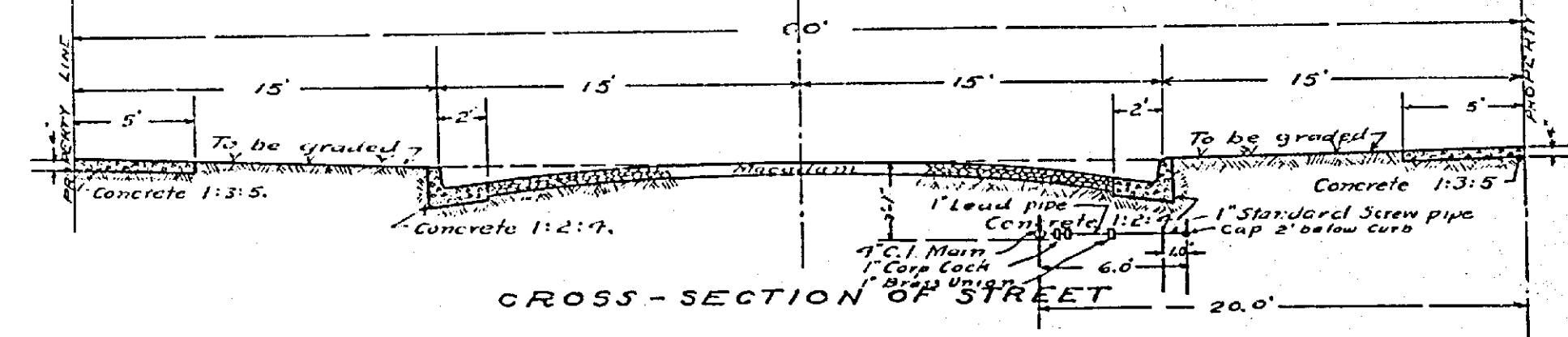


LEGEND Macadam Pavement to be constructed shown thus: Combination Curb and Gutter to be constructed shown thus: Sidewalks to be constructed shown thus: Sewerage already constructed shown thus: One Water System to be constructed: District Boundary shown thus:

Adopted by the Mayor and Common Council of the City of Riverside this 20th day of December 1927. Attest: S. O. ... Clerk of the City of Riverside.

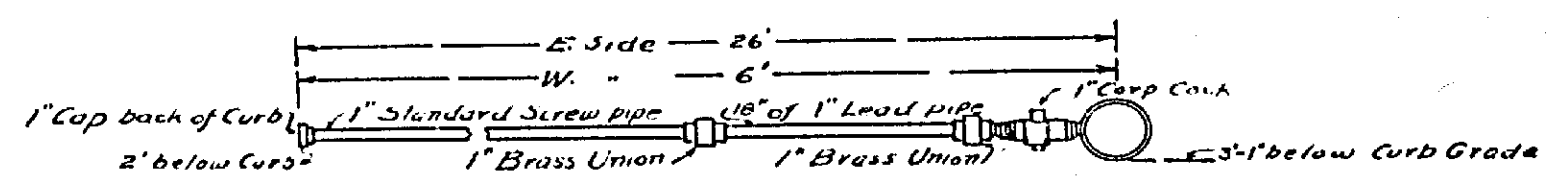
Approved: W. J. ... Superintendent of Water Department.

Note: Expansion Joints in Sidewalk also Combination Curb and Gutter to be placed at intervals not to exceed 25 feet.



- Screenings not less than 18 lbs to Sq. yd. Oil 0.10 to 0.15 gal. per Sq. yd. No. 7 Rock not less than 36 lbs per Sq. yd. Oil 0.35 to 0.40 gal. per Sq. yd. No. 3 Rock 72 lbs per Sq. yd. Oil 0.4 gal. per Sq. yd.

DETAIL OF COMBINATION CURB AND GUTTER MACADAM ROADWAY CONSTRUCTION



904