

143

172

171

111

158

85

11

17

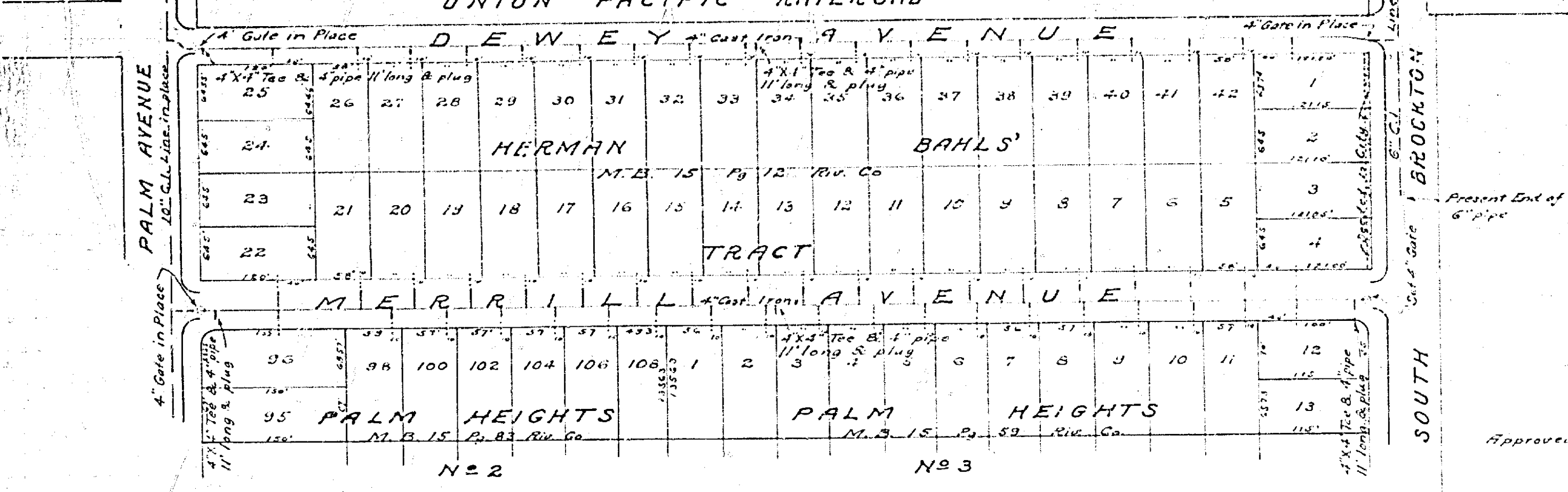
22

MAP No. 909

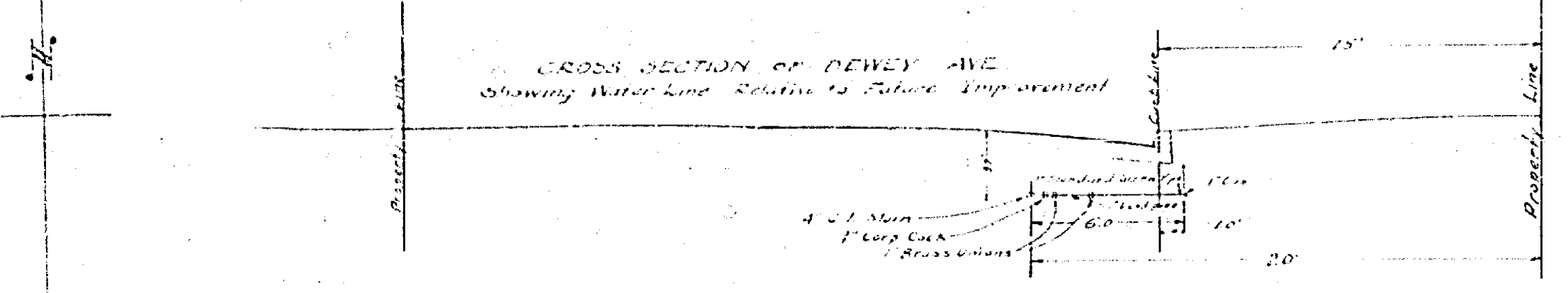
Adopted by the Mayor and Common Council of the City of Riverside this 7th day of February 1928

Attest *J. Schmitt* Clerk of the City of Riverside

MAP OF PROPOSED WATER SYSTEM ON DEWEY AVENUE AND MERRILL AVENUE R. E. BROWN, CITY ENGINEER 1928.

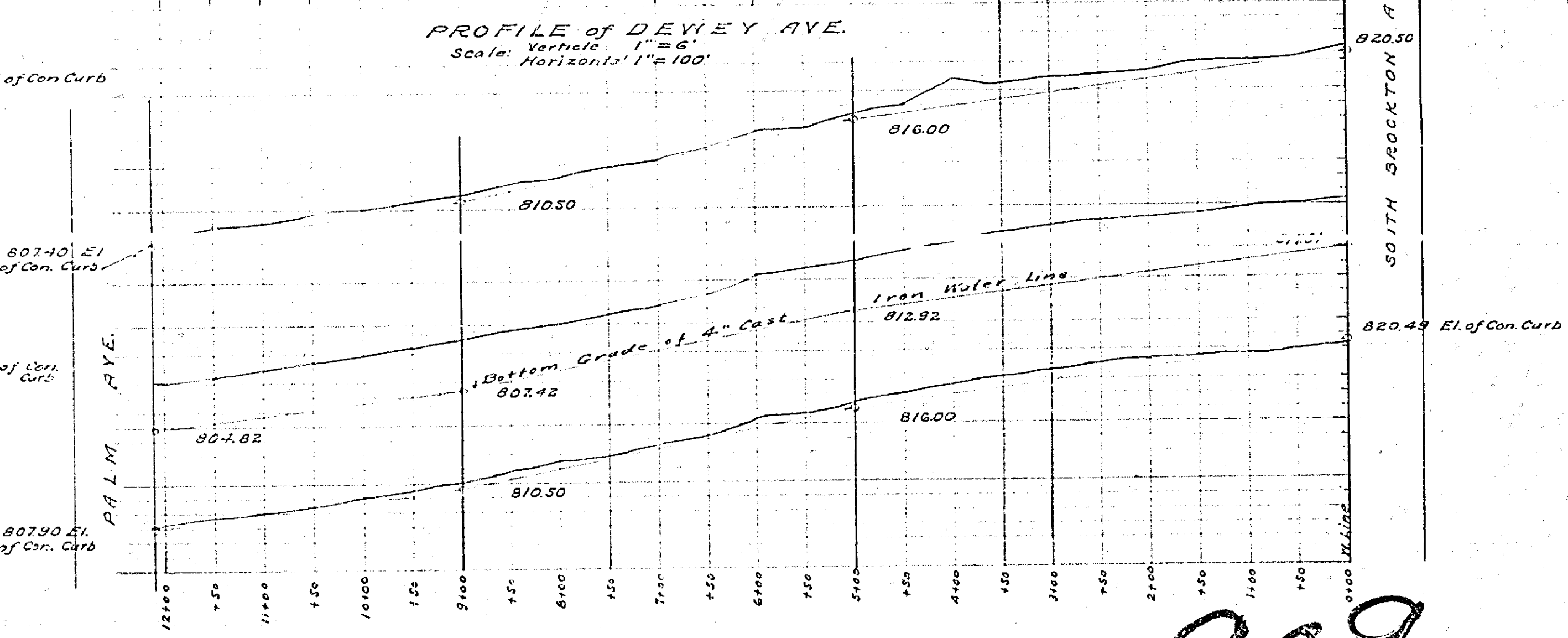
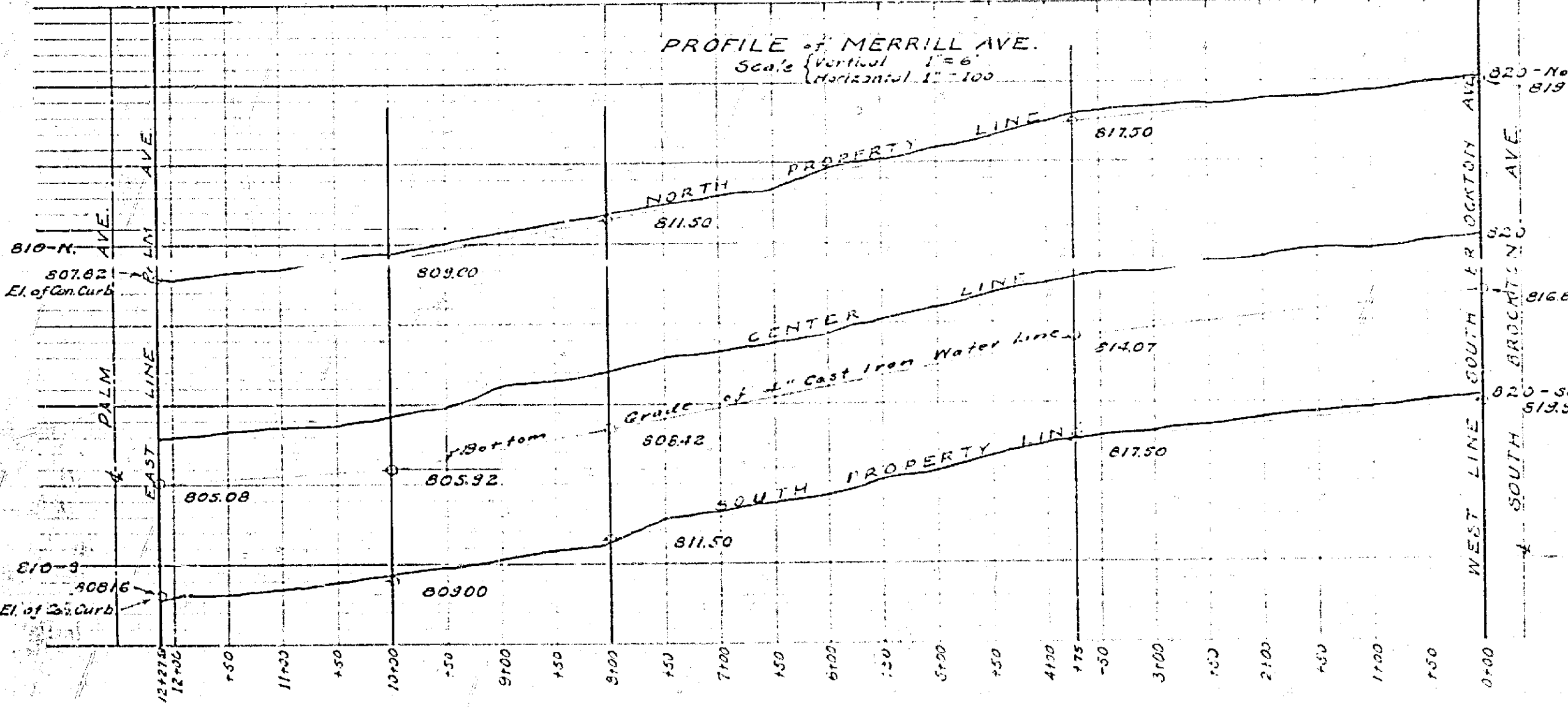
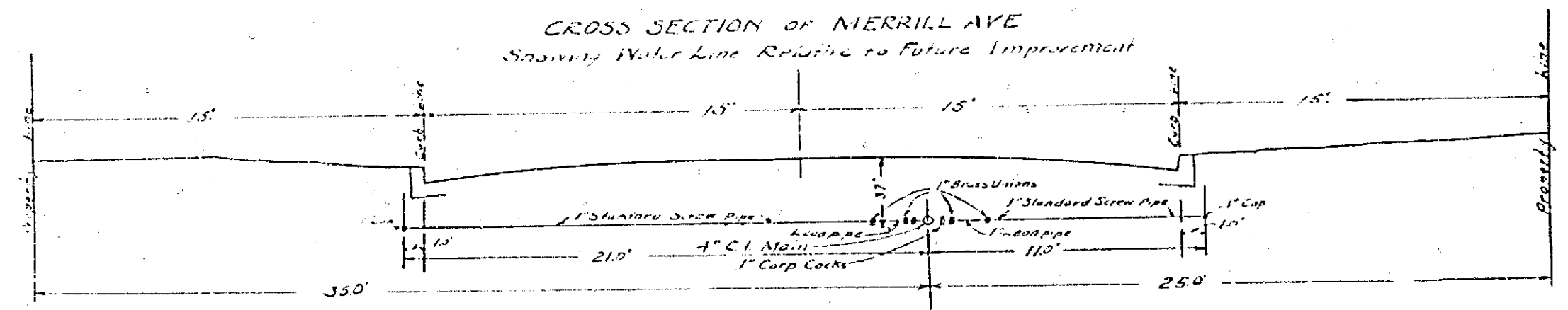


LEGEND
4" Water Line Shown thus
District Boundary shown thus



SCALE
1 INCH = 100 FEET

Approved *W. A. Schmitt*
Superintendent of Water Dept.



909

172

171

111

158

85

11

17

22