

34

34

22

MAP No. 910

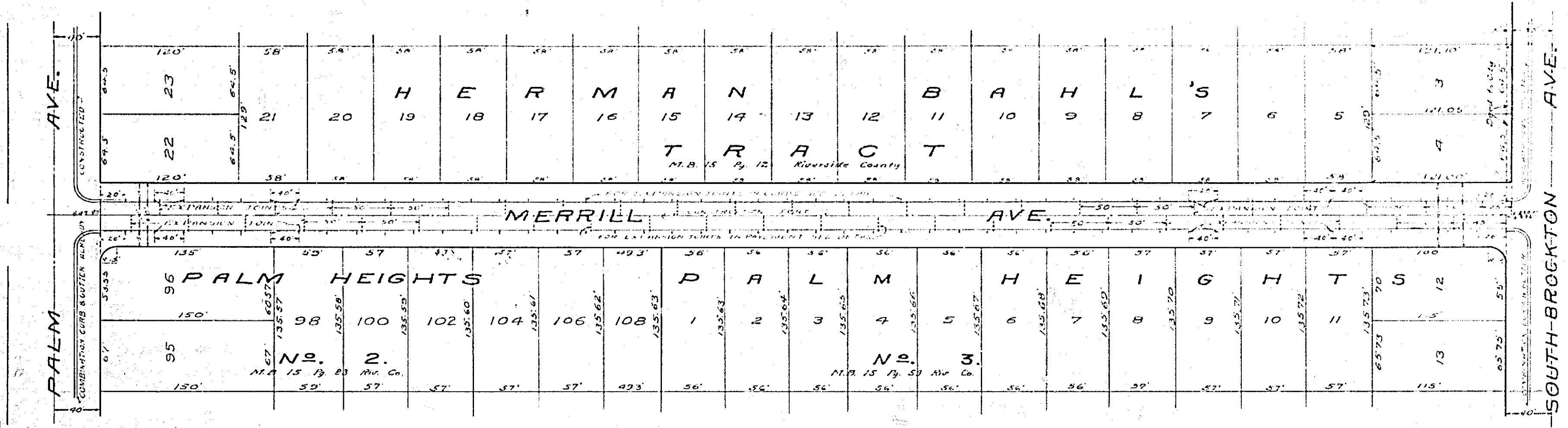
11

11

58

11

82

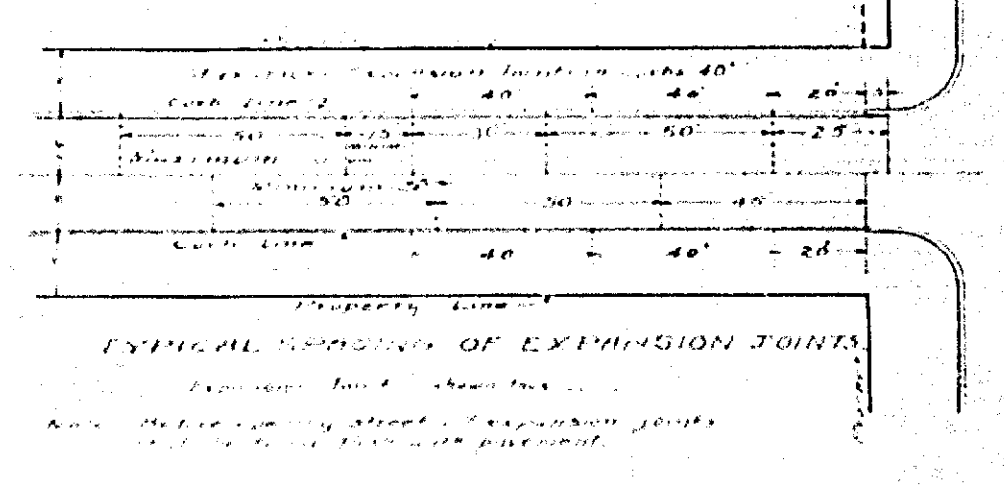
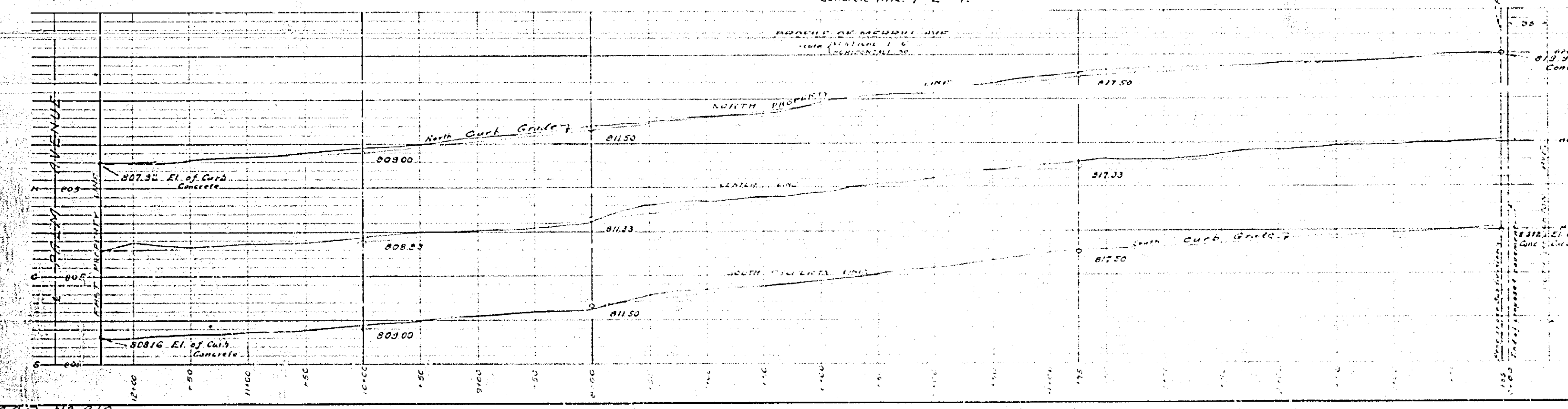
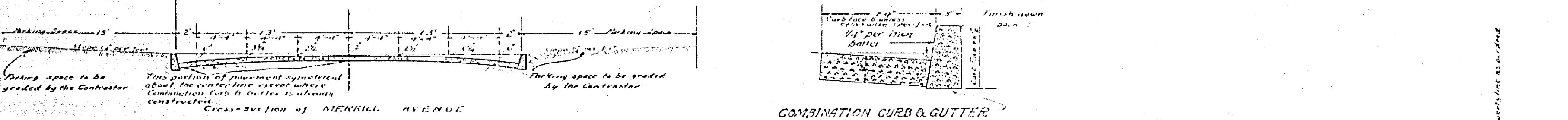


PROPOSED IMPROVEMENT OF  
**MERRILL AVENUE**  
 FROM SOUTH BROCKTON AVENUE TO PALM AVE.  
 IN PALM BEACH, FLORIDA  
 CITY ENGINEER

Submitted by the Mayor and Council, City of Palm Beach, Florida  
 Mayor *J. Sumner*  
 City Engineer

LEGEND

1. Proposed Street Curb, 15" high, 6" wide, concrete  
 2. Proposed Street Gutter, 12" wide, 4" deep, concrete  
 3. Proposed Street Pavement, 4" thick, concrete  
 4. Proposed Street Sidewalk, 4" thick, concrete  
 5. Proposed Street Light Pole, 12" diameter, 12' high, concrete  
 6. Proposed Street Sign, 12" x 12", concrete  
 7. Proposed Street Tree, 12" diameter, 12' high, concrete



910

85

82

11

11

172

11

22

55

34