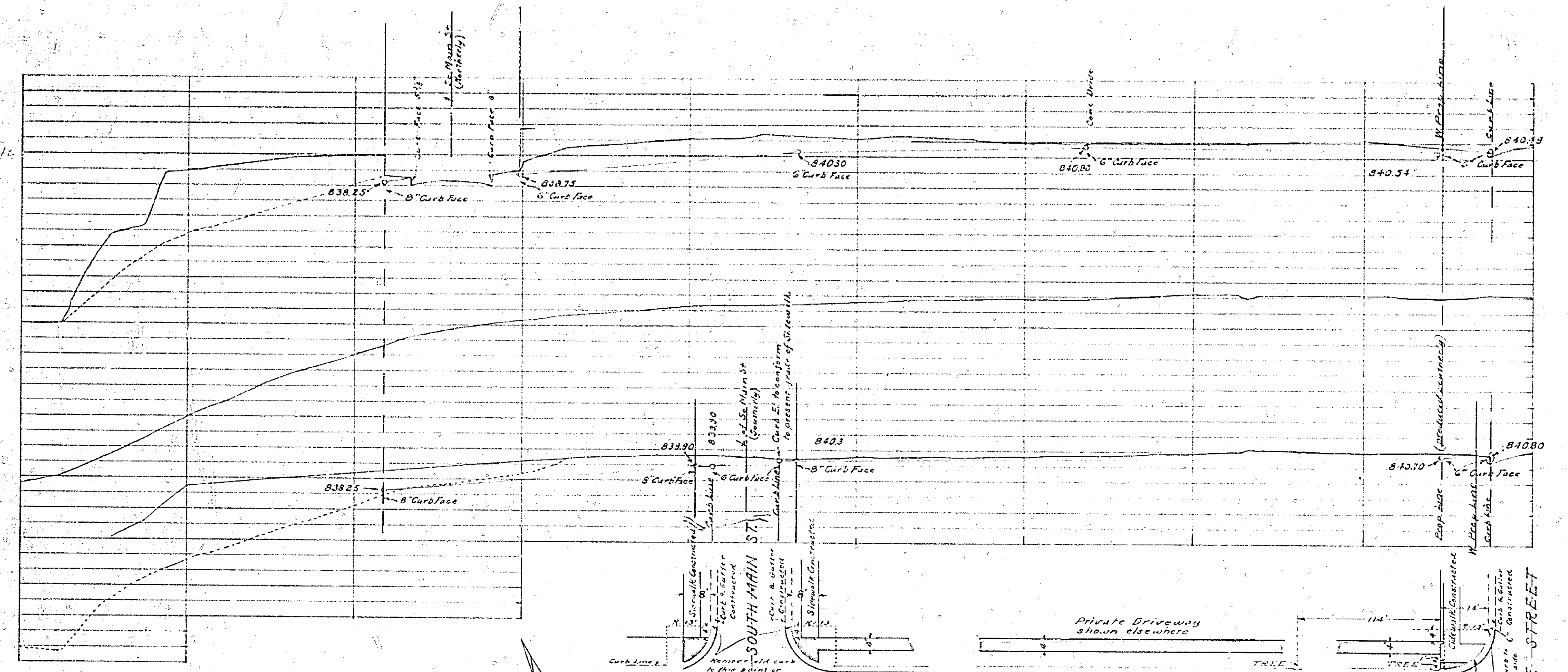


DIG

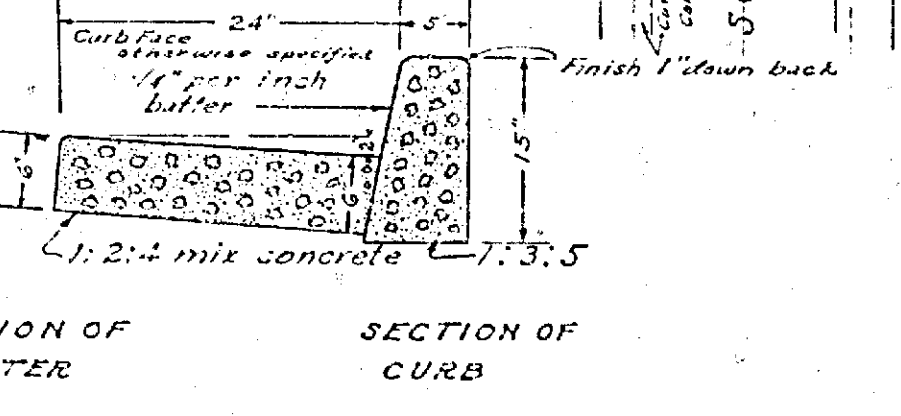
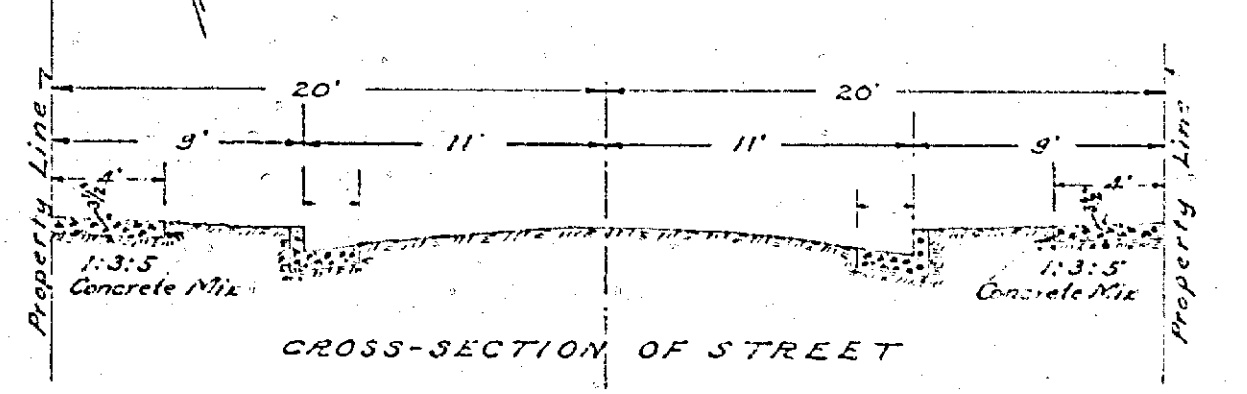


MAP OF PROPOSED IMPROVEMENT ON
FIFTEENTH STREET
 R. BROWN, CITY ENGINEER, 1928.

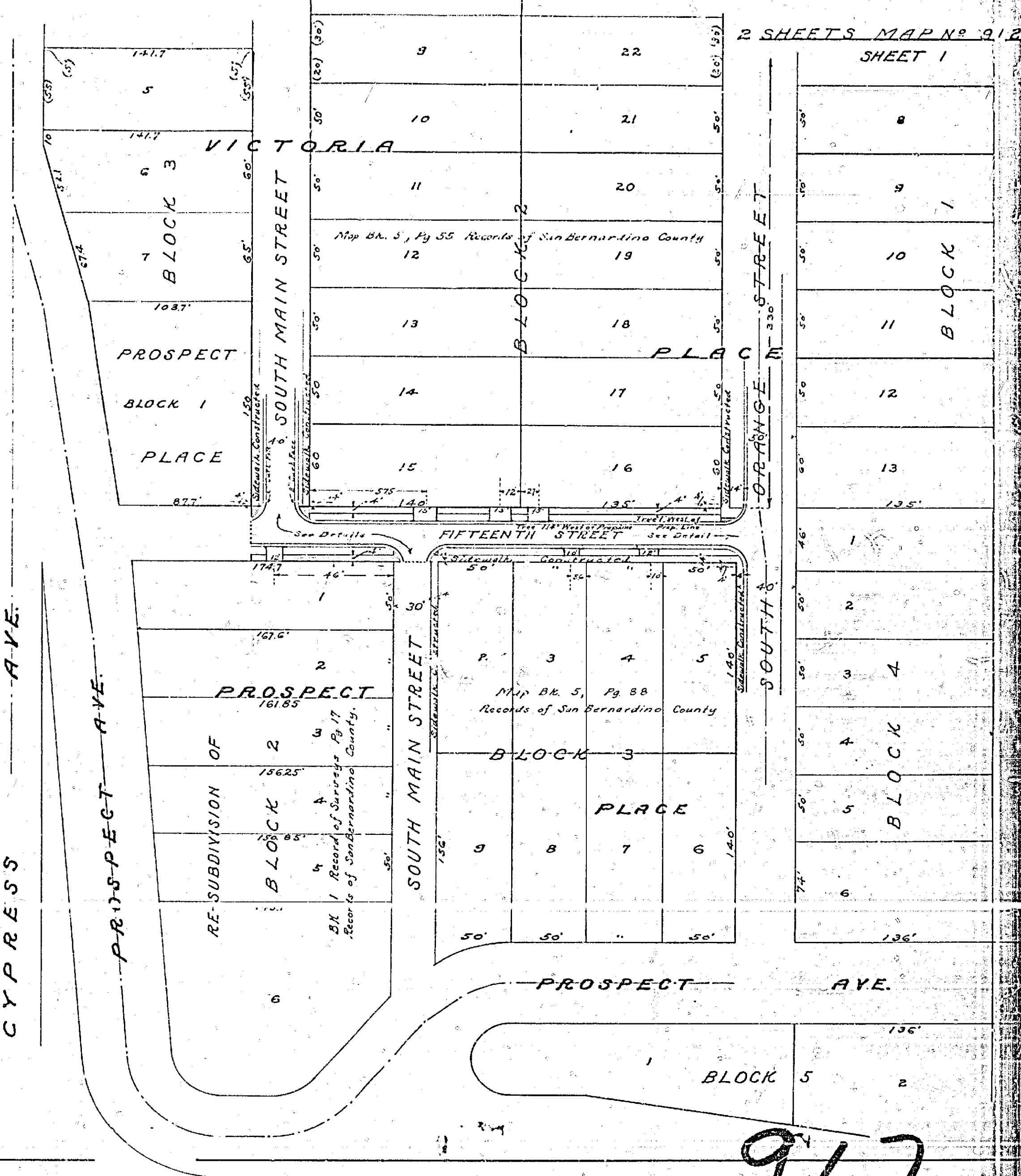
SCALE: 1 INCH = 30 FEET

- LEGEND**
- Cement concrete curb to be constructed SAND FILL
 - Cement Concrete Gutter
 - Private Driveways (Drawing 348-A)
 - District Boundary
 - Cement Concrete Sidewalk

Adopted by the Mayor and Common Council
 of the City of Riverside this 27th day of March, 1928.
 Attest: *[Signature]*
 Clerk of the City of Riverside.



2 SHEETS
 MAP NO. 912 SHEET 1



2 SHEETS MAP NO. 912
 SHEET 1

912