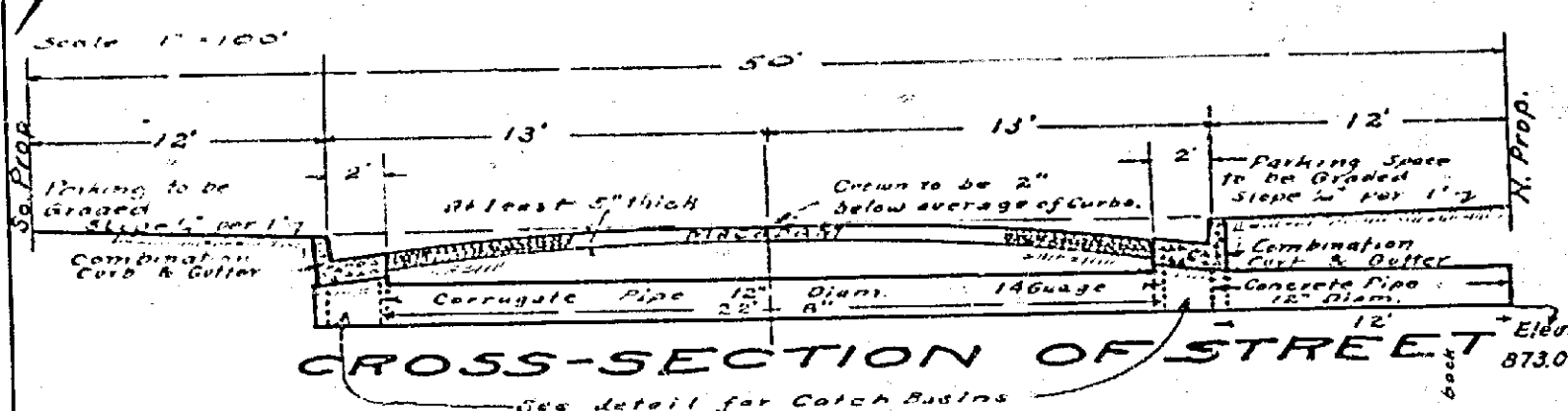
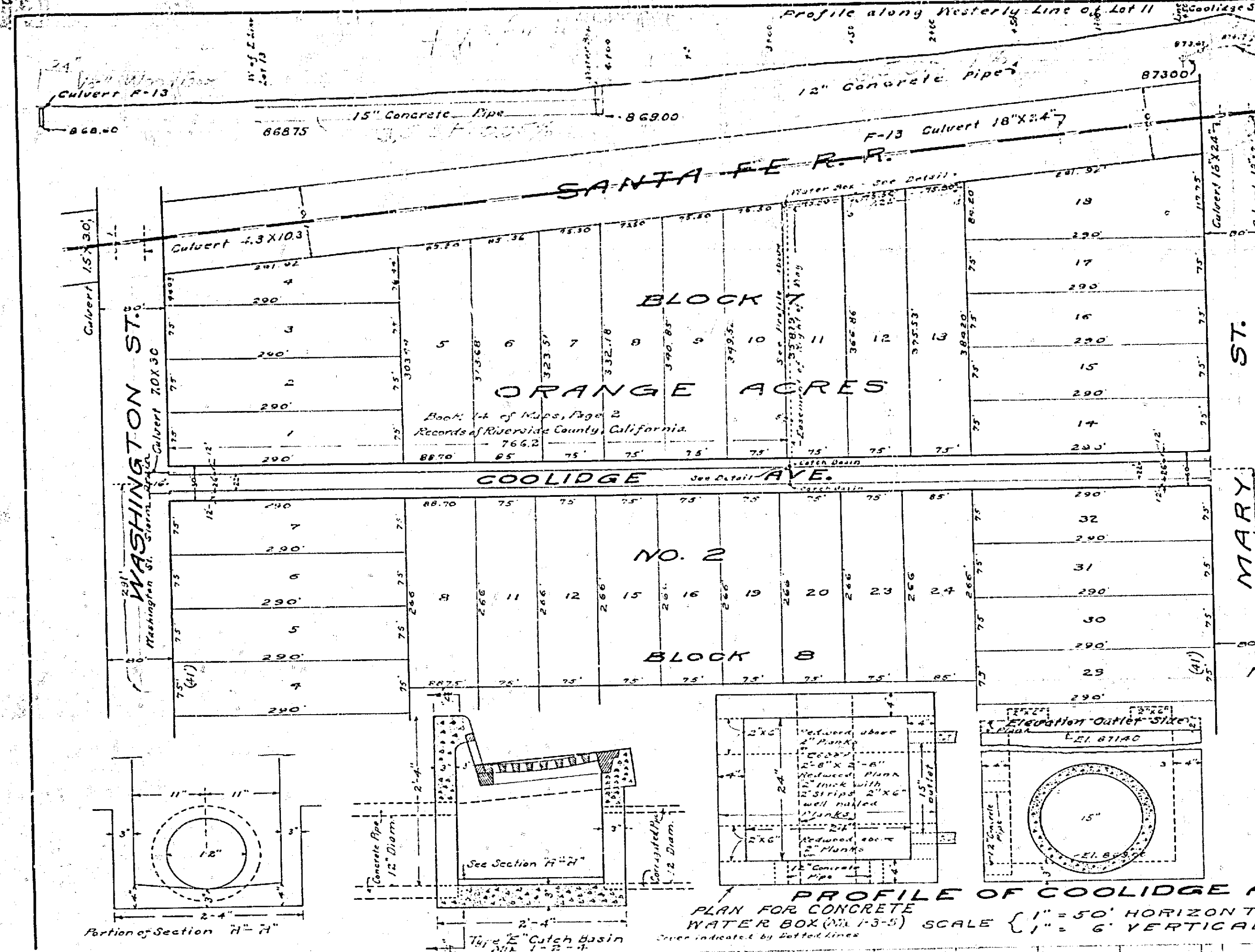


MAP OF PROPOSED IMPROVEMENT OF COOLIDGE AVENUE

R. E. BROWN, CITY ENGINEER, 1928.

Adopted by the Mayor and Common Council of the City of Riverside, this 10th day of April, 1928.
G. O. ...
Clerk of the City of Riverside.



DETAIL OF COMBINATION CURB & GUTTER & MACADAM ROADWAY

NOTE: Expansion Joints to be placed not to exceed 40 feet apart.

NOTE: Expansion Joints to be placed not to exceed 40 feet apart.

LEGEND

Macadam Roadway to be constructed shown thus: [Symbol]

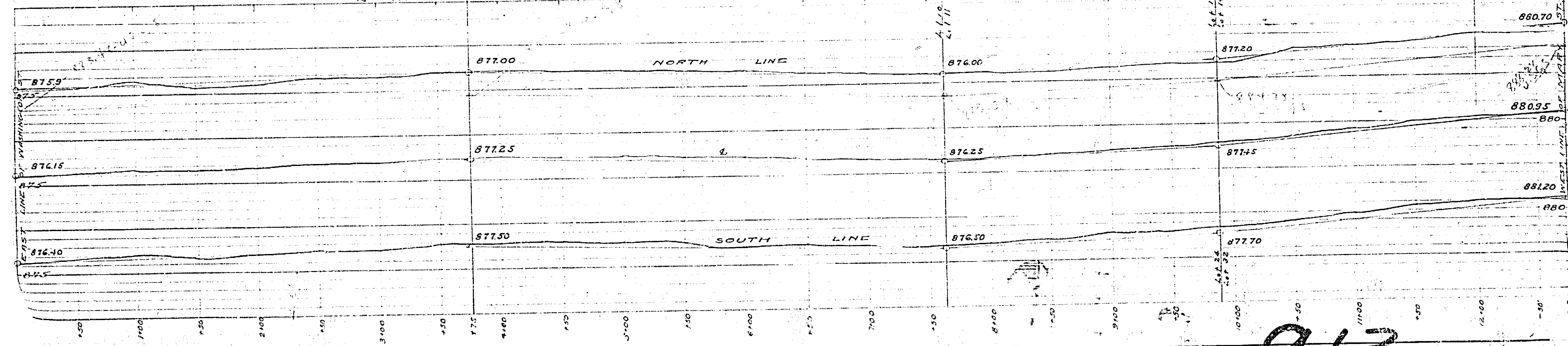
Combination Curb & Gutter to be constructed shown thus: [Symbol]

District Boundary shown thus: [Symbol]

Catch Basins shown thus: [Symbol]

Drainage Pipe [Symbol]

Water Box [Symbol]



913